



**±5,000 SF OF VERSATILE OFFICE / COMMUNITY SPACE  
IN HISTORIC FIELDS CORNER LANDMARK**

**1486 DORCHESTER AVENUE  
BOSTON, MASSACHUSETTS, 02122**



**±5,000 SF of Versatile Office / Community Space in Historic Fields Corner Landmark**

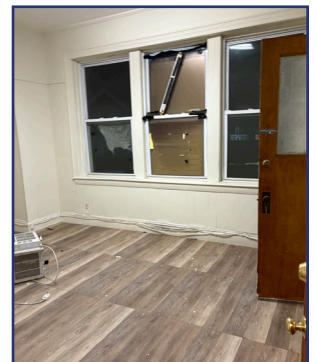
Available for lease is approximately 5,000 square feet on the second floor of the historic Howard Building, prominently located in the heart of Fields Corner. This expansive unit features 10+ private offices, a large stage or assembly room, two bathrooms, and multiple multi-purpose/flex rooms, offering an adaptable layout suitable for a wide range of uses.

The space has a strong history of community and cultural impact, having previously housed respected nonprofit organizations such as the Dorchester Art Project, Vietnamese-American Civic Association, and ACORN.

Ideally positioned directly across from the Fields Corner MBTA Red Line station, the property offers exceptional accessibility for staff, clients, and visitors. The building is also within close proximity to banks, restaurants, retail, and neighborhood markets, with Route 93 approximately 2 miles away.

**Key Highlights:**

- ±5,000 SF on the 2nd floor
- 10+ private offices plus multiple flex / multi-purpose rooms
- Large stage or assembly room
- Two bathrooms
- Bright, spacious layout with multiple configuration options
- Prime location across from MBTA Red Line (Fields Corner Station)
- Excellent access to local amenities and major highways



**INFO@DMGBROKERAGE.COM | O: 781.591.3232 X0  
83 MORSE STREET, BUILDING #6 | NORWOOD, MA 02062 | 781.591.3232  
WWW.DMGBROKERAGE.COM**

**DMG BROKERAGE LLC - LICENSE #9786 • DANIEL M. GARDNER - REAL ESTATE BROKER OF RECORD - LICENSE #9533684**

Some images in this marketing material have been digitally enhanced or generated using AI for illustrative purposes only. Images may not represent current property conditions.