

Outparcel of Woodbury Commons Shopping Center

Fully Built Restaurant Available · Move-In Ready

8289 Jericho Turnpike – Woodbury, NY 11797



SCAN TO
VIEW VIDEO

Contact Exclusive Brokers for More Information



120 NORTH VILLAGE AVENUE
ROCKVILLE CENTRE, NY 11570
516-496-8888

Edward Gottlieb, CRX, CLS
Lic. Associate RE Broker
ed@schuckmanrealty.com

Jessica Vilmenay
Lic. Associate RE Broker
jessica@schuckmanrealty.com

Kenneth Schuckman
RE Broker
ken@schuckmanrealty.com

Outparcel of Woodbury Commons Shopping Center

Fully Built Restaurant Available Move-In Ready

8289 Jericho Turnpike – Woodbury, NY 11797

ADDRESS: 8289 JERICHO TPK.
CITY, STATE: WOODBURY, NY
MARKET: WOODBURY COMMONS
AVAILABILITY: IMMEDIATE

SIZE:
First Floor: 4,696 SF
Second Floor: 1,664 SF
Attic: 510 SF
Cellar: 2,727 SF

LOCATED AT:
WOODBURY COMMONS

HIGHLIGHTS:

Prime visibility on Jericho Turnpike, one of the busiest and most established retail corridors in Nassau County.

Located within an affluent trade area, drawing from high-income neighborhoods in Woodbury, Syosset, Muttontown, and Cold Spring Harbor.

Private on-site parking, a major advantage for a full-service restaurant in this market.

Proximity to major roadways, including Route 135 and Northern State Parkway, increasing accessibility and customer reach.

Established dining reputation, as the space previously housed a well-known full-service restaurant, simplifying transition for a new operator.

Favorable demographics for higher-check dining, with strong household incomes and discretionary spending.



Contact Exclusive Brokers for More Information



120 NORTH VILLAGE AVENUE
ROCKVILLE CENTRE, NY 11570
516-496-8888

Edward Gottlieb, CRX, CLS
Lic. Associate RE Broker
ed@schuckmanrealty.com

Jessica Vilmenay
Lic. Associate RE Broker
jessica@schuckmanrealty.com

Kenneth Schuckman
RE Broker
ken@schuckmanrealty.com

Outparcel of Woodbury Commons Shopping Center

Fully Built Restaurant Available Move-In Ready

8289 Jericho Turnpike – Woodbury, NY 11797

AERIAL VIEW



Contact Exclusive Brokers for More Information



120 NORTH VILLAGE AVENUE
ROCKVILLE CENTRE, NY 11570
516-496-8888

Edward Gottlieb, CRX, CLS
Lic. Associate RE Broker
ed@schuckmanrealty.com

Jessica Vilmenay
Lic. Associate RE Broker
jessica@schuckmanrealty.com

Kenneth Schuckman
RE Broker
ken@schuckmanrealty.com

Outparcel of Woodbury Commons Shopping Center

Fully Built Restaurant Available Move-In Ready

8289 Jericho Turnpike – Woodbury, NY 11797

First Floor Entrance and Bar Area



Contact Exclusive Brokers for More Information



120 NORTH VILLAGE AVENUE
ROCKVILLE CENTRE, NY 11570
516-496-8888

Edward Gottlieb, CRX, CLS
Lic. Associate RE Broker
ed@schuckmanrealty.com

Jessica Vilmenay
Lic. Associate RE Broker
jessica@schuckmanrealty.com

Kenneth Schuckman
RE Broker
ken@schuckmanrealty.com

Outparcel of Woodbury Commons Shopping Center

Fully Built Restaurant Available Move-In Ready

8289 Jericho Turnpike – Woodbury, NY 11797

First Floor Dining Areas



Contact Exclusive Brokers for More Information

SCHUCKMAN[®]
REALTY, INC.

120 NORTH VILLAGE AVENUE
ROCKVILLE CENTRE, NY 11570
516-496-8888

Edward Gottlieb, CRX, CLS
Lic. Associate RE Broker
ed@schuckmanrealty.com

Jessica Vilmenay
Lic. Associate RE Broker
jessica@schuckmanrealty.com

Kenneth Schuckman
RE Broker
ken@schuckmanrealty.com

Outparcel of Woodbury Commons Shopping Center

Fully Built Restaurant Available Move-In Ready

8289 Jericho Turnpike – Woodbury, NY 11797

Kitchen Area



Contact Exclusive Brokers for More Information

SCHUCKMAN[®]
REALTY, INC.

120 NORTH VILLAGE AVENUE
ROCKVILLE CENTRE, NY 11570
516-496-8888

Edward Gottlieb, CRX, CLS
Lic. Associate RE Broker
ed@schuckmanrealty.com

Jessica Vilmenay
Lic. Associate RE Broker
jessica@schuckmanrealty.com

Kenneth Schuckman
RE Broker
ken@schuckmanrealty.com

Outparcel of Woodbury Commons Shopping Center

Fully Built Restaurant Available Move-In Ready

8289 Jericho Turnpike – Woodbury, NY 11797

Second Floor



Contact Exclusive Brokers for More Information

SCHUCKMAN[®]
REALTY, INC.

120 NORTH VILLAGE AVENUE
ROCKVILLE CENTRE, NY 11570
516-496-8888

Edward Gottlieb, CRX, CLS
Lic. Associate RE Broker
ed@schuckmanrealty.com

Jessica Vilmenay
Lic. Associate RE Broker
jessica@schuckmanrealty.com

Kenneth Schuckman
RE Broker
ken@schuckmanrealty.com

Outparcel of Woodbury Commons Shopping Center

Fully Built Restaurant Available Move-In Ready

8289 Jericho Turnpike – Woodbury, NY 11797

Entrance and Outdoor Dining



Contact Exclusive Brokers for More Information



120 NORTH VILLAGE AVENUE
ROCKVILLE CENTRE, NY 11570
516-496-8888

Edward Gottlieb, CRX, CLS
Lic. Associate RE Broker
ed@schuckmanrealty.com

Jessica Vilmenay
Lic. Associate RE Broker
jessica@schuckmanrealty.com

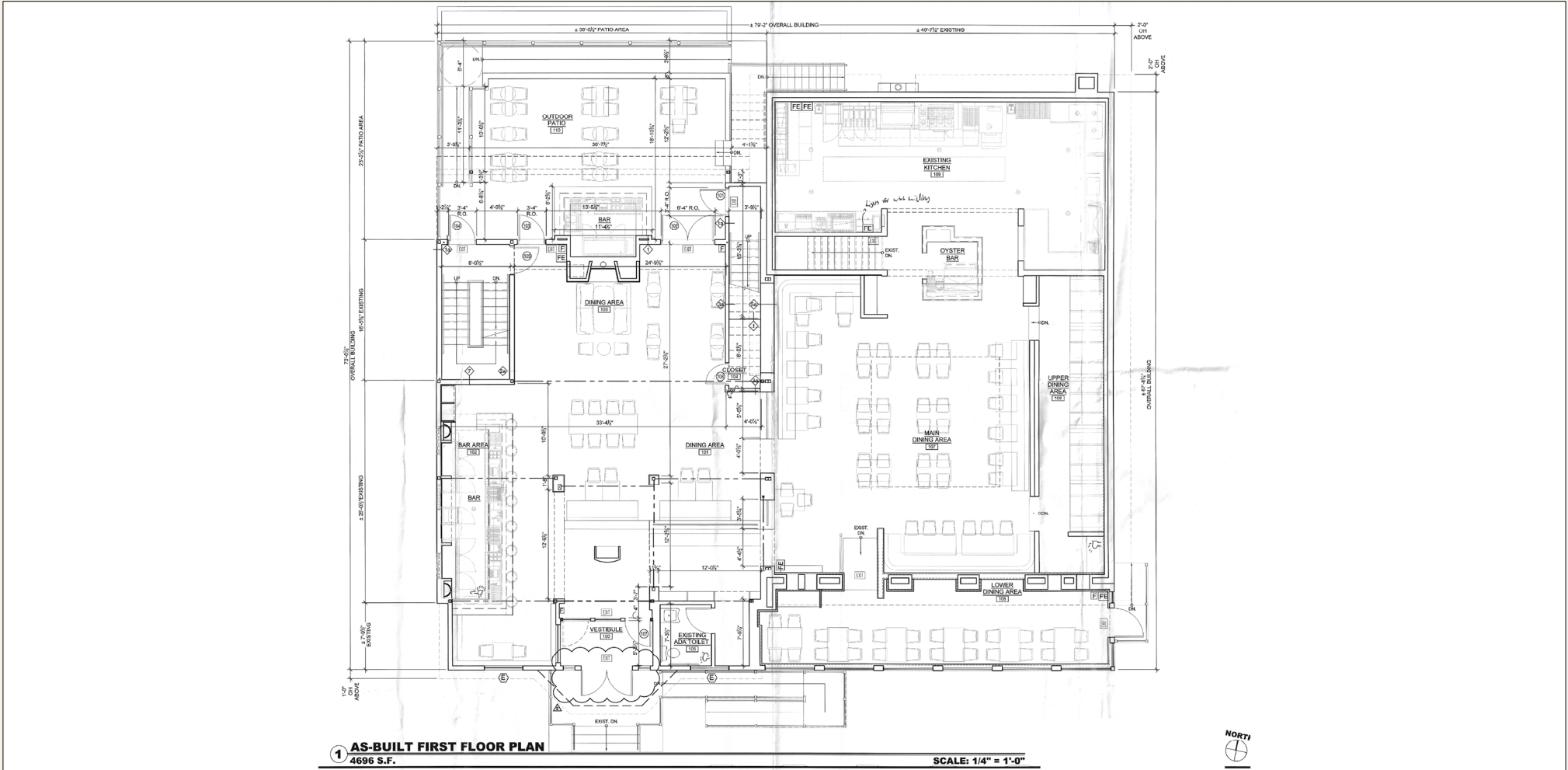
Kenneth Schuckman
RE Broker
ken@schuckmanrealty.com

Outparcel of Woodbury Commons Shopping Center

Fully Built Restaurant Available Move-In Ready

8289 Jericho Turnpike – Woodbury, NY 11797

First Floor Plans – As Built



Contact Exclusive Brokers for More Information



120 NORTH VILLAGE AVENUE
ROCKVILLE CENTRE, NY 11570
516-496-8888

Edward Gottlieb, CRX, CLS
Lic. Associate RE Broker
ed@schuckmanrealty.com

Jessica Vilmenay
Lic. Associate RE Broker
jessica@schuckmanrealty.com

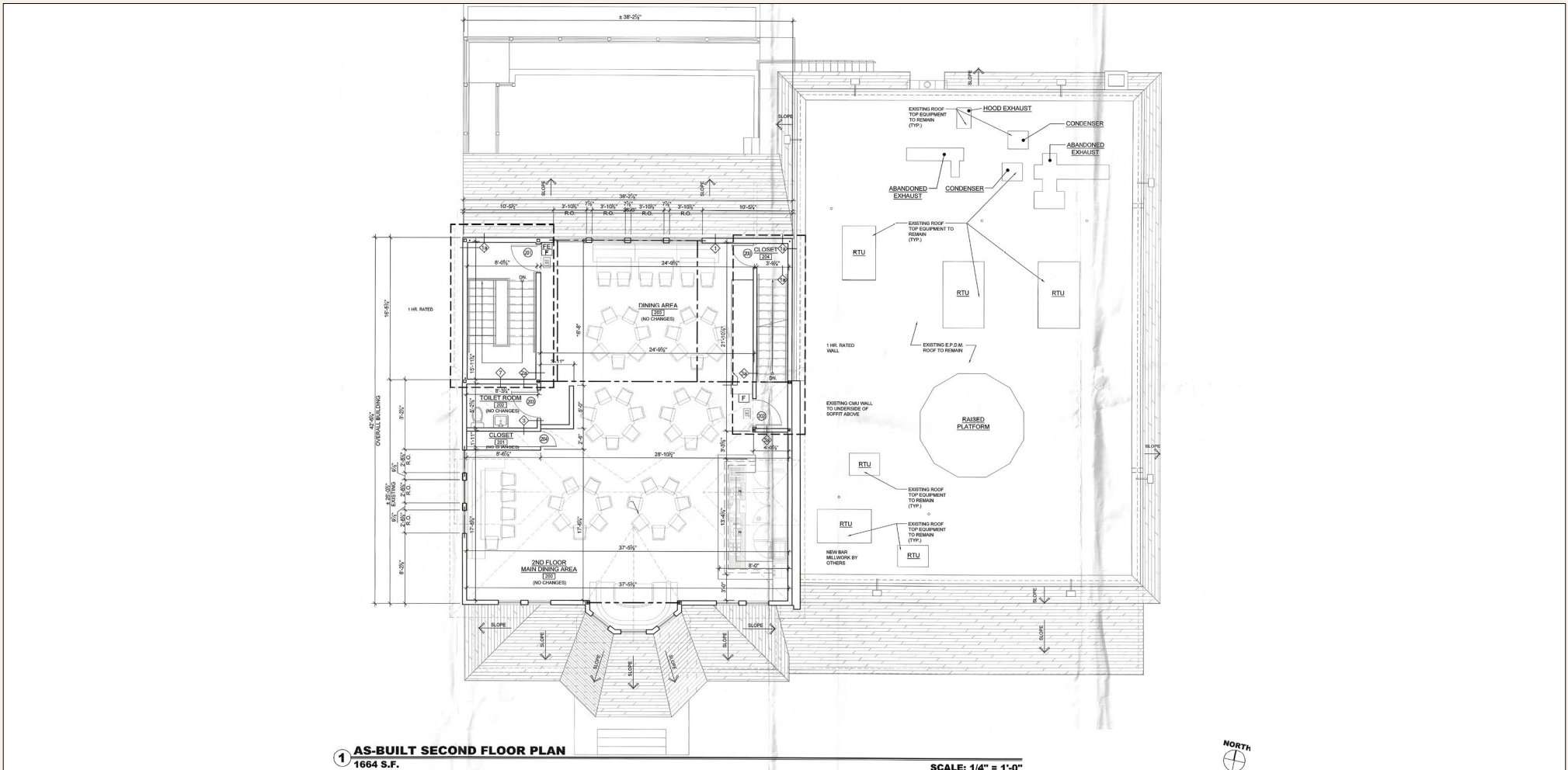
Kenneth Schuckman
RE Broker
ken@schuckmanrealty.com

Outparcel of Woodbury Commons Shopping Center

Fully Built Restaurant Available Move-In Ready

8289 Jericho Turnpike – Woodbury, NY 11797

Second Floor Plans – As Built



Contact Exclusive Brokers for More Information



120 NORTH VILLAGE AVENUE
ROCKVILLE CENTRE, NY 11570
516-496-8888

Edward Gottlieb, CRX, CLS
Lic. Associate RE Broker
ed@schuckmanrealty.com

Jessica Vilmenay
Lic. Associate RE Broker
jessica@schuckmanrealty.com

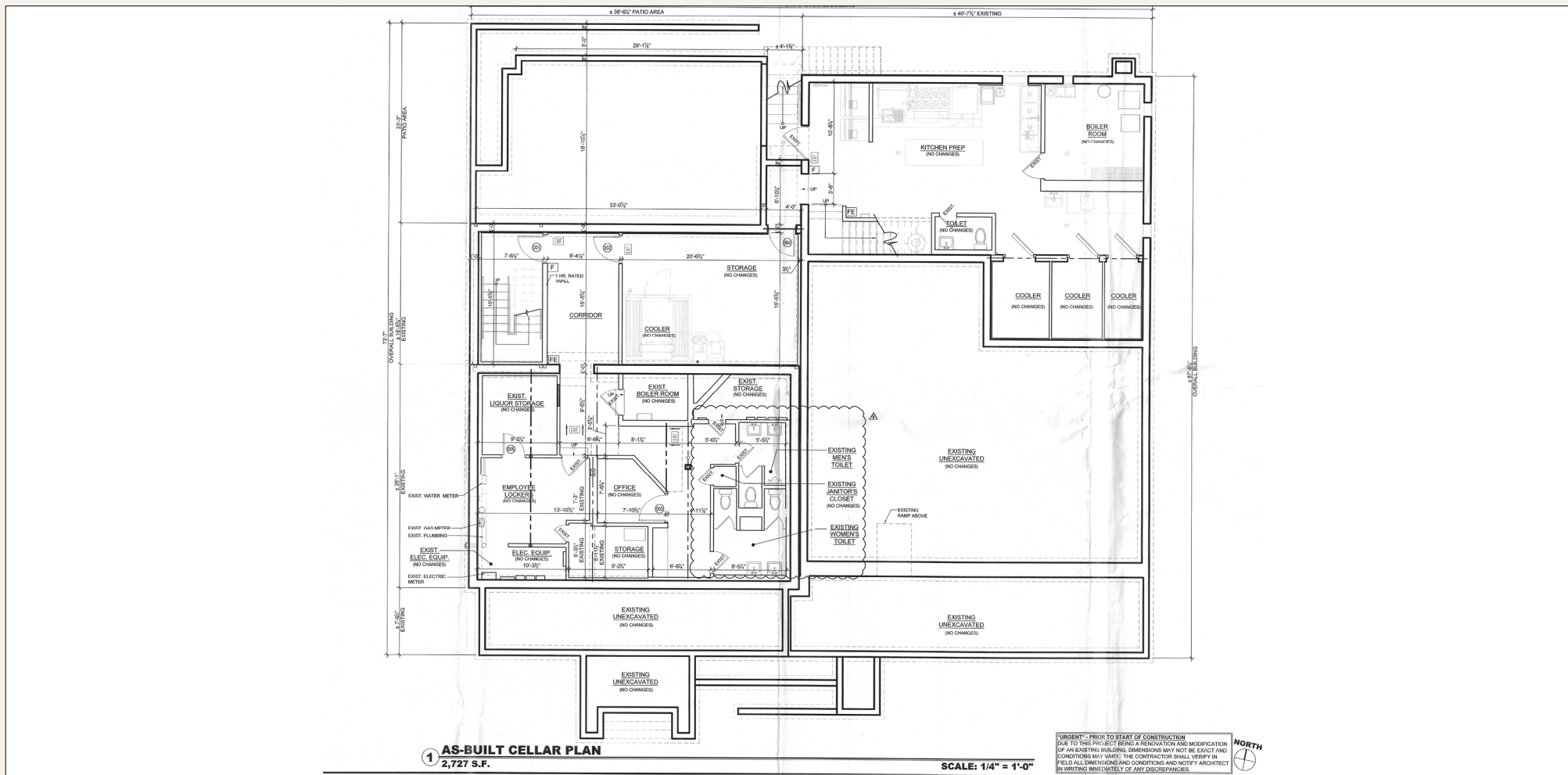
Kenneth Schuckman
RE Broker
ken@schuckmanrealty.com

Outparcel of Woodbury Commons Shopping Center

Fully Built Restaurant Available Move-In Ready

8289 Jericho Turnpike – Woodbury, NY 11797

Cellar Plans – As Built



Contact Exclusive Brokers for More Information



120 NORTH VILLAGE AVENUE
ROCKVILLE CENTRE, NY 11570
516-496-8888

Edward Gottlieb, CRX, CLS
Lic. Associate RE Broker
ed@schuckmanrealty.com

Jessica Vilmenay
Lic. Associate RE Broker
jessica@schuckmanrealty.com

Kenneth Schuckman
RE Broker
ken@schuckmanrealty.com

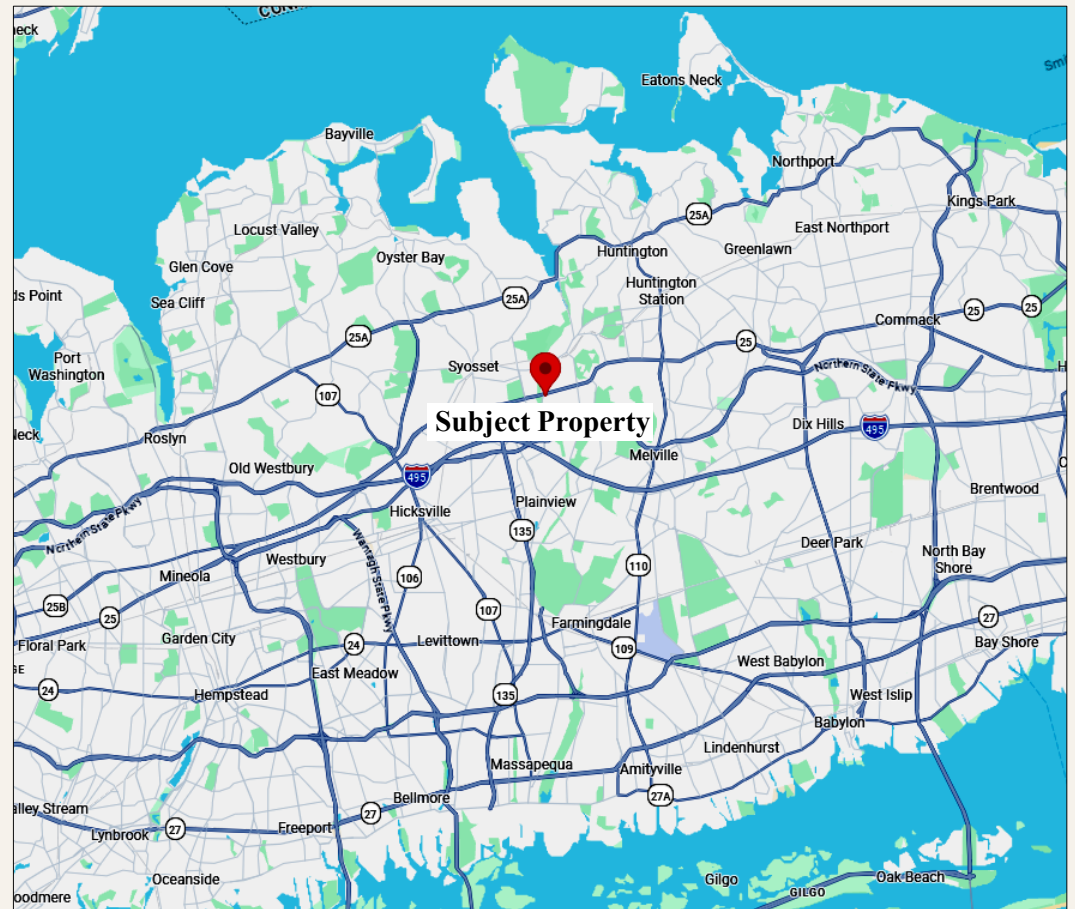
Outparcel of Woodbury Commons Shopping Center

Fully Built Restaurant Available Move-In Ready

8289 Jericho Turnpike – Woodbury, NY 11797

FINE DINING WITHIN 10 MILES

- Rare 650** - Syosset · Steakhouse & sushi
- Volpe Ristorante at Fox Hollow** - Woodbury · Upscale Italian
- Franina Ristorante** - Syosset · Northern Italian
- Sage Bistro Moderne** - Woodbury · French contemporary
- Grasso's** - Cold Spring Harbor · Contemporary American
- TwoThirty Six** - Syosset · Japanese omakase
- Rustic Root** - Woodbury · New American / farm-to-table
- George White Restaurant** - Syosset · Contemporary American
- Hilltop Kitchen & Bar** - Syosset · Modern American
- The Halston** - Melville · Contemporary American
- Blackstone** - Melville · Prime steakhouse
- MoCA Asian Bistro** - Woodbury area · Upscale Asian fusion
- Krinti Mediterranean Grill** - Woodbury · Upscale Mediterranean
- Café Testarossa** - Syosset · Contemporary Italian
- Butera's** - Woodbury · Italian trattoria
- The Bryant** - Huntington Station · New American
- Ruta Oaxaca** - Woodbury · Upscale Mexican



Contact Exclusive Brokers for More Information



120 NORTH VILLAGE AVENUE
ROCKVILLE CENTRE, NY 11570
516-496-8888

Edward Gottlieb, CRX, CLS
Lic. Associate RE Broker
ed@schuckmanrealty.com

Jessica Vilmenay
Lic. Associate RE Broker
jessica@schuckmanrealty.com

Kenneth Schuckman
RE Broker
ken@schuckmanrealty.com

Outparcel of Woodbury Commons Shopping Center

Fully Built Restaurant Available Move-In Ready

8289 Jericho Turnpike – Woodbury, NY 11797

Demographics

Population	1 mile	3 miles	5 miles
2025 Population	7,039	66,524	204,990
2030 Population	7,081	66,110	204,022
2010-2020 Annual Rate	0.47%	0.30%	0.38%
Households			
2010 Total Households	2,201	21,685	67,018
2020 Total Households	2,285	21,720	68,226
2025 Total Households	2,367	21,821	68,653
2030 Total Households	2,401	21,839	68,814
2025 Average Household Size	2.61	2.98	2.94
Wealth Index	288	271	235
Median Household Income			
2025 Median Household Income	\$196,456	\$186,307	\$162,072
2030 Median Household Income	\$214,721	\$209,960	\$183,514
2025-2030 Annual Rate	1.79%	2.42%	2.52%
Average Household Income			
2025 Average Household Income	\$277,156	\$244,516	\$216,799
2030 Average Household Income	\$299,616	\$266,832	\$236,310

Contact Exclusive Brokers for More Information



120 NORTH VILLAGE AVENUE
ROCKVILLE CENTRE, NY 11570
516-496-8888

Edward Gottlieb, CRX, CLS
Lic. Associate RE Broker
ed@schuckmanrealty.com

Jessica Vilmenay
Lic. Associate RE Broker
jessica@schuckmanrealty.com

Kenneth Schuckman
RE Broker
ken@schuckmanrealty.com