

Bellomy Center | Retail Space For Lease

1975-1995 Bellomy St., Santa Clara, CA



Last Retail Space
1,388± SF

RYAN WARNER
Lic. #01397580
rwarner@moinc.net
408.477.2505



PROPERTY HIGHLIGHTS



*PROPOSED REMODEL-SUBJECT TO MODIFICATION

- Newly Remodeled Retail Building
- Close Proximity to Santa Clara University
- High Population Density
- Outdoor Patio Possible

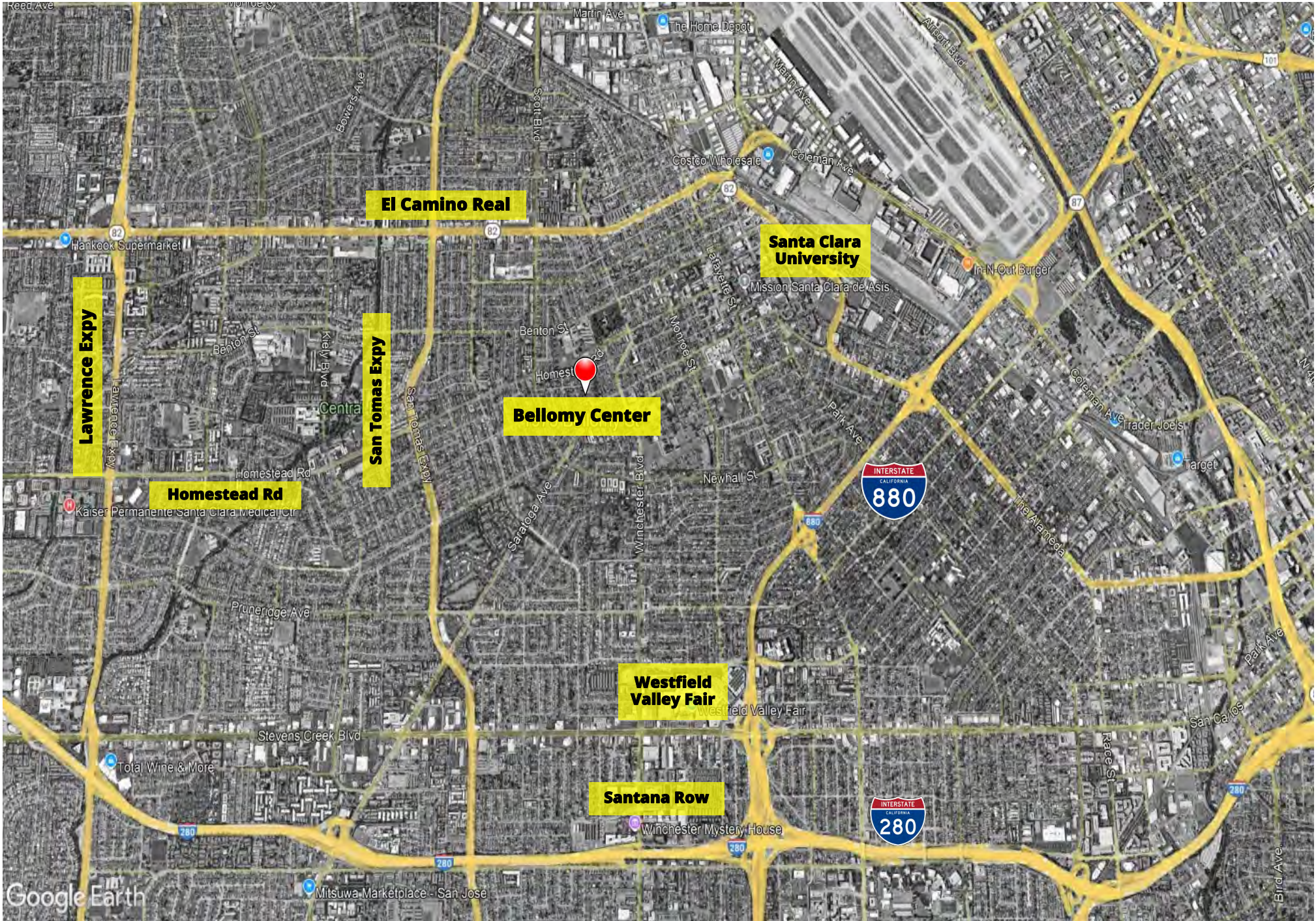
- Launderlux Coming Soon!
- 1,388± SF Endcap
- Asking \$3.00 PSF, NNN
- TI Allowance Available

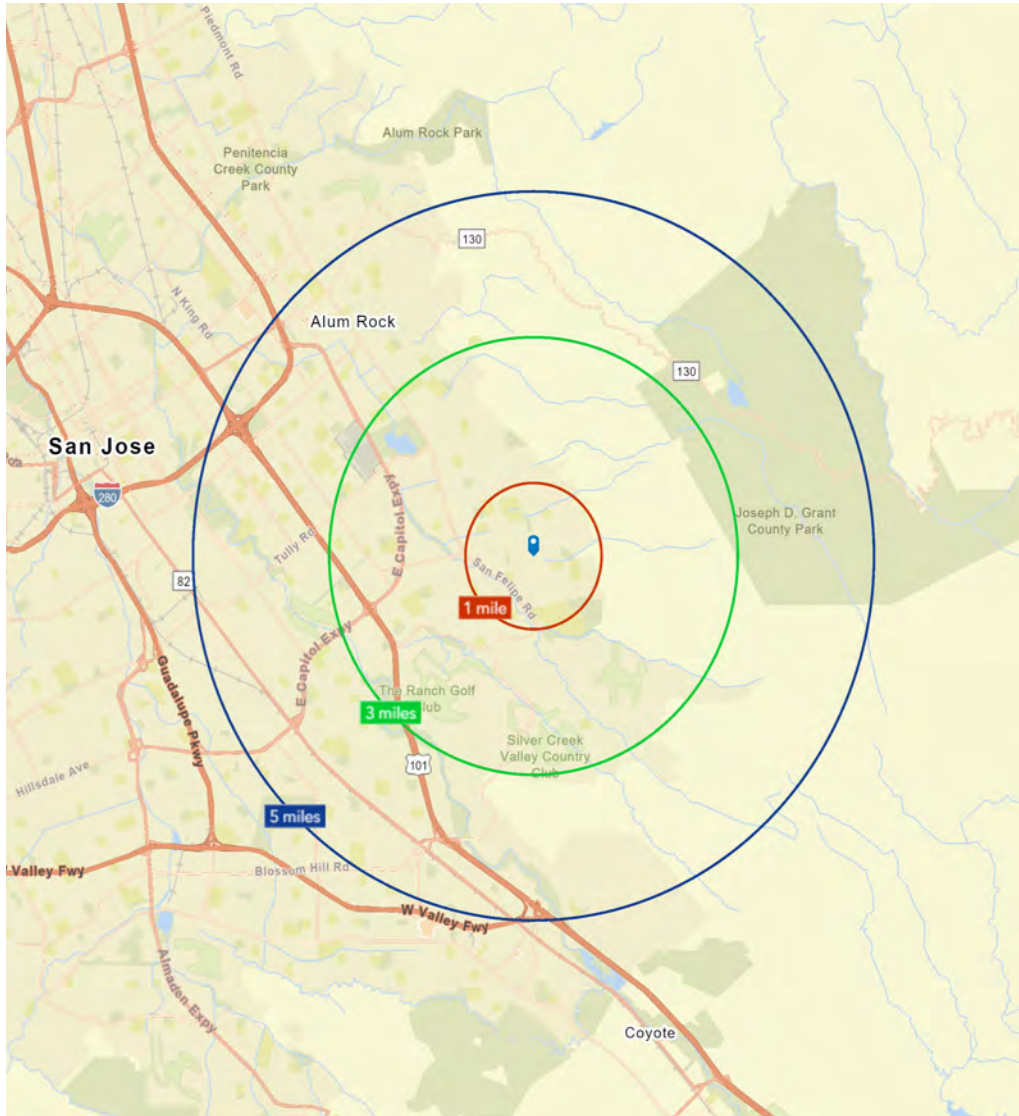












AREA DEMOGRAPHICS

2026	1 MILE	3 MILES	5 MILES
POPULATION:	29,204	232,272	649,504
AVG. HH INCOME:	\$199,764	\$206,585	\$218,951
BUSINESSES:	919	11,712	32,811
EMPLOYEES:	7,725	140,817	421,211



Meacham/Oppenheimer, Inc.
 8 N. San Pedro St., Suite 300
 San Jose, California 95110
 Tel: 408.378.5900
www.moinc.net

RYAN WARNER

Lic. #01397580
rwarner@moinc.net
 408.477.2505