

EAST BELT BUSINESS PARK

 TRANSWESTERN

1475 EAST SAM HOUSTON PARKWAY SOUTH | SUITE 190 | PASADENA, TX 77503

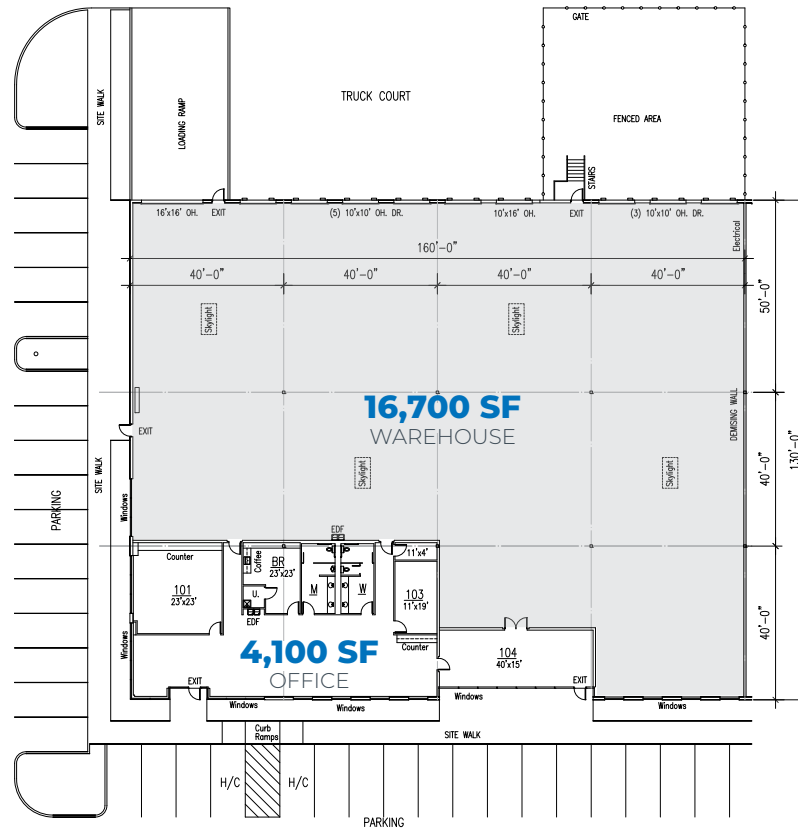


FOR LEASE | 20,800 SF Office/Warehouse Space Near the Port of Houston

EAST BELT BUSINESS PARK

1475 EAST SAM HOUSTON PARKWAY SOUTH | SUITE 190 | PASADENA, TX 77503

FLOOR PLAN



PROPERTY FEATURES

- 20,800 SF Total
- 4,100 SF Office
- 16,700 SF Warehouse
- (8) 10' x 10' Dock High Loading Doors
- (1) 10' x 16' Dock High Loading Door
- (1) 16' x 16' Ramp Door
- 20' Clear Height
- ESFR Sprinkler System
- Fenced Area in Truck Court
- Proximity to Barbour's Cut and Bayport Container Terminals

T TRANSWESTERN
LEASING CONTACTS

CRAIG BEAN
713.490.3784
CRAIG.BEAN@TRANSWESTERN.COM

BRIAN GAMMILL
713.270.3321
BRIAN.GAMMILL@TRANSWESTERN.COM

DARRYL NOON
713.270.3325
DARRYL.NOON@TRANSWESTERN.COM

EAST BELT BUSINESS PARK

1475 EAST SAM HOUSTON PARKWAY SOUTH | SUITE 190 | PASADENA, TX 77503

AERIAL MAP



STRATEGICALLY LOCATED
Immediate access to Beltway 8 & Highway 225.

TW TRANSWESTERN
LEASING CONTACTS

CRAIG BEAN
713.490.3784
CRAIG.BEAN@TRANSWESTERN.COM

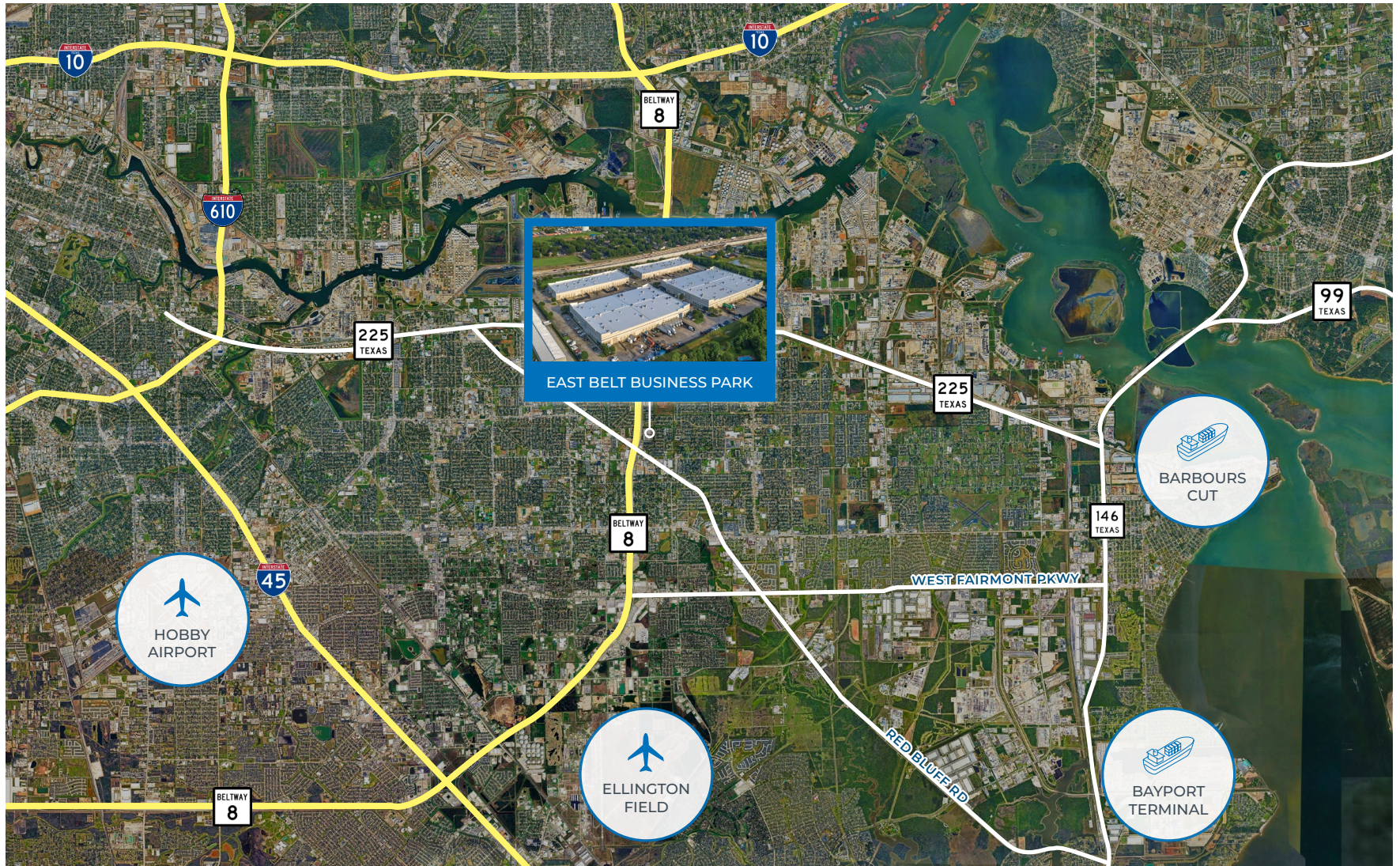
BRIAN GAMMILL
713.270.3321
BRIAN.GAMMILL@TRANSWESTERN.COM

DARRYL NOON
713.270.3325
DARRYL.NOON@TRANSWESTERN.COM

EAST BELT BUSINESS PARK

1475 EAST SAM HOUSTON PARKWAY SOUTH | SUITE 190 | PASADENA, TX 77503

LOCATION



TW TRANSWESTERN
LEASING CONTACTS

CRAIG BEAN
713.490.3784
CRAIG.BEAN@TRANSWESTERN.COM

BRIAN GAMMILL
713.270.3321
BRIAN.GAMMILL@TRANSWESTERN.COM

DARRYL NOON
713.270.3325
DARRYL.NOON@TRANSWESTERN.COM