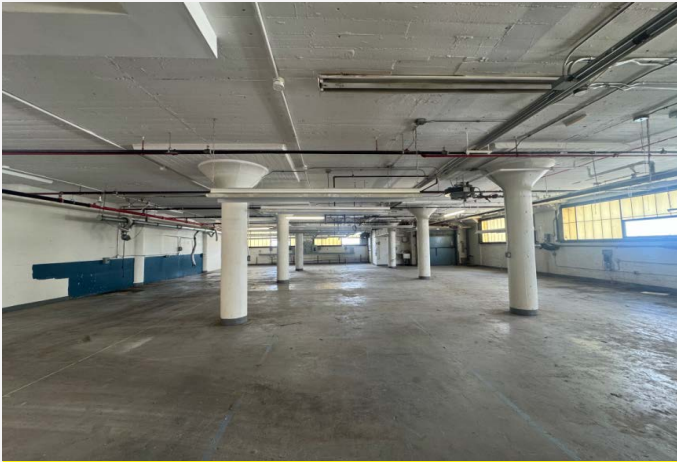


# BLDG 3

## 10TH FLOOR, SUITE 1008 - 4,900 SF

**POSSESSION: IMMEDIATE**



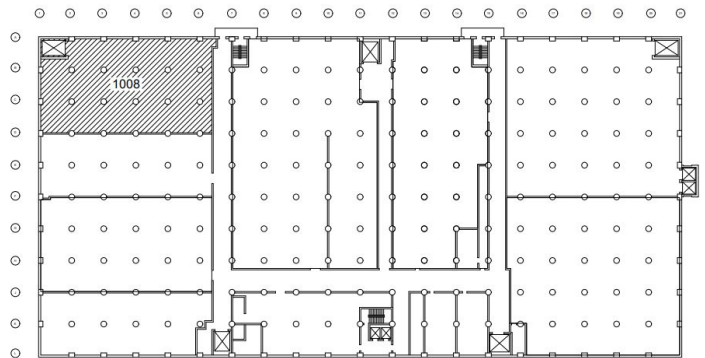
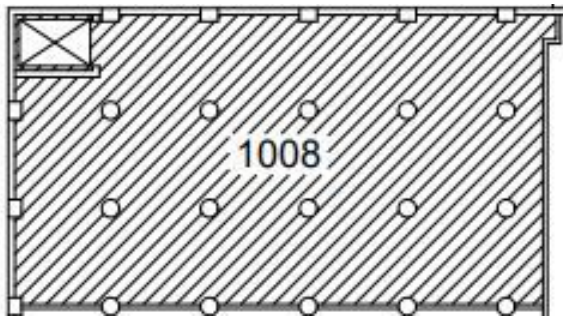
SUITE 1008



BLDG 3 LOCATION

### UNIT HIGHLIGHTS

- In-Unit freight access
- Slab-to-slab height: 10'+
- 100 AMP, 3 Phase, 208/120V
- Corner unit; windows on two sides
- Live Load 250 psf



**BROOKLYN** | **NAVY** | **YARD**

141 FLUSHING AVENUE  
BROOKLYN, NY 11205

**JOSEPH COLISTA**

SVP, Leasing  
jcolista@bnydc.org  
929-337-1205