

FORMER CVS

16000 E. 10 Mile Road / Eastpointe, MI



MID-AMERICA[®]
Real Estate-Michigan, Inc.

FOR LEASE



RETAIL OPPORTUNITY

FORMER CVS



Address

16000 E. 10 Mile Road
Eastpointe, MI 48021

Availability

10,920 SF
1.2 Acres

Area Tenants



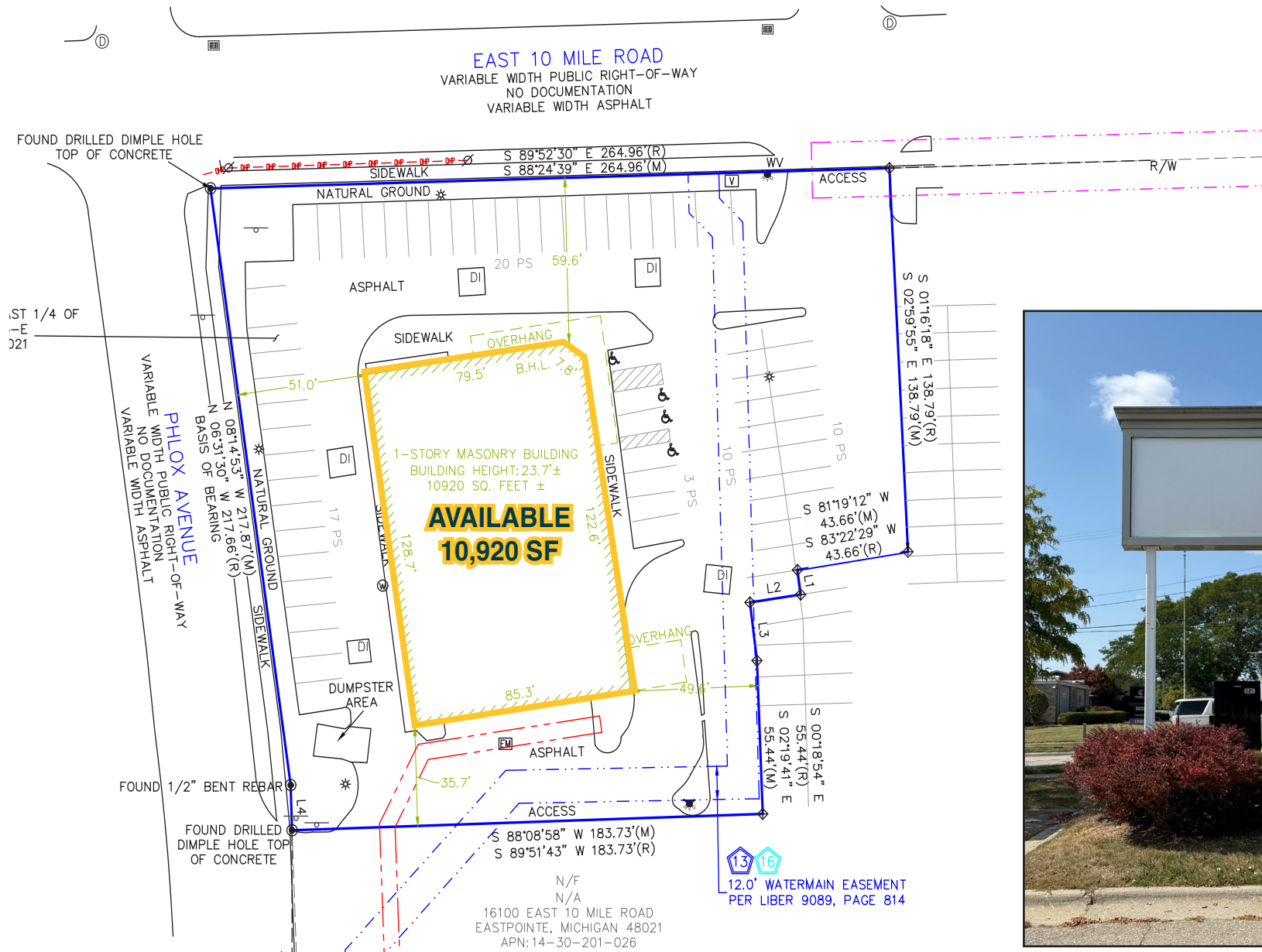
Features

- Former CVS building with drive-thru, 64 parking spaces, and a large pylon sign on 10 Mile Road. Built in 1999.
- Prime location at the signalized intersection of E. 10 Mile Road and Phlox Avenue.
- Outlot to Forman Mills and directly across from Family Dollar.
- Traffic counts: Over 16,900 VPD on E. 10 Mile Road.
- Zoned MU-1 (Neighborhood Mixed Use) Permitted uses include childcare centers, financial institutions, grocery stores, health/fitness clubs, medical offices, secondhand stores, and among others.
- Annual real estate taxes: \$43,079
- SEV: \$689,700 | Taxable Value: \$572,825

Demographics (2025)

	1 MILE	3 MILES	5 MILES
POPULATION	19,394	146,060	356,573
HOUSEHOLDS	7,917	59,504	146,763
AVG HOUSEHOLD INCOME	\$74,621	\$78,320	\$82,101
DAYTIME POPULATION	14,653	129,824	348,927

FORMER CVS



FORMER CVS



FORMER CVS



10 Mile Rd

16,936 vpd

FAMILY DOLLAR
my family my family dollar

Sweetwater Tavern
FOOD & SPIRITS

Little Caesars

SITE

Memorial Stadium

FORMAN MILLS

Belleview Elementary

AERIAL

FORMER CVS



Jared
Gell

Mid-America Real Estate -
Michigan, Inc.

T: 248.855.6800

JGell@MidAmericaGrp.com

Brad
Rosenberg

Mid-America Real Estate -
Michigan, Inc.

T: 248.855.6800

BRosenberg@MidAmericaGrp.com



38500 Woodward Ave, Suite 100
Bloomfield Hills, Michigan 48304
248.855.6800

MidAmericaGrp.com

CONTACT