



4,630 - 9,856 SF AVAILABLE

4225 Phil Niekro Parkway
Norcross, GA 30093



OWNED BY:

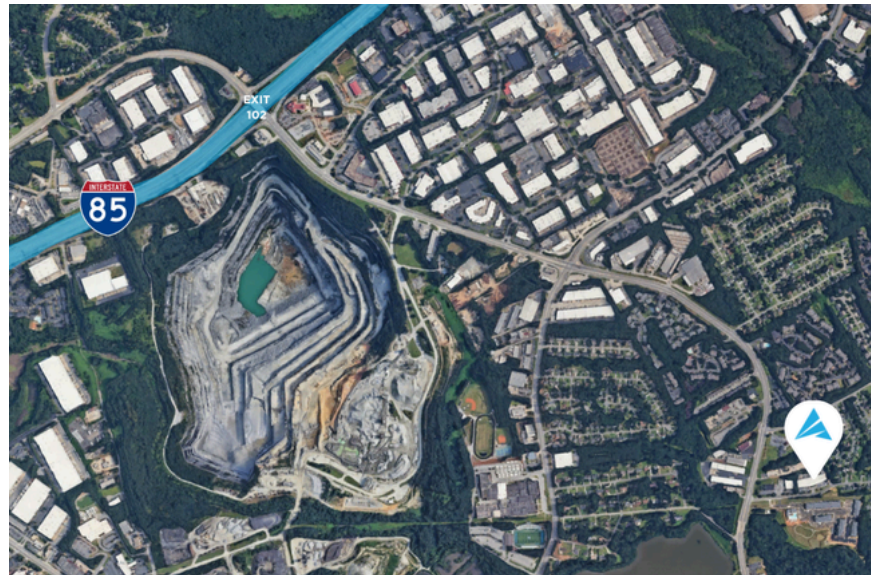
Faropoint

FOR LEASE



BUILDING INFORMATION

- Total Size:** 40,195 SF
- Clear Height:** 18'
- Sprinklers:** Wet System
- Loading:** Fourteen (14) Dock High Doors
Four (4) Drive-In Doors
- Available:** Immediately
- Location:** +/- 2 miles from I-85
+/- 8 miles from I-285
+/- 20 miles from I-20
+/- 32 miles from Atlanta Airport



For more information, please contact:

MORGAN MCMENAMY

Office: (404) 806 - 6631
Cell: (404) 771 - 1199
mmcmnamy@apexindustrialre.com

TREY WEGHORST

Office: (770) 264 - 9420
Cell: (404) 276 - 9314
tweghorst@apexindustrialre.com

RYAN BLACKBURN

Office: (404) 974 - 2716
Cell: (404) 821 - 7715
rblackburn@apexindustrialre.com



APEX INDUSTRIAL
REAL ESTATE ADVISORS, LLC

Although the information contained therein was provided from sources believed to be reliable, Apex Industrial makes no representation, expressed or implied, as to its accuracy and said information is subject to errors, omissions or changes.



5,179 SF AVAILABLE

4225 Phil Niekro Parkway

Suite 110 - 111

Norcross, GA 30093

OWNED BY:

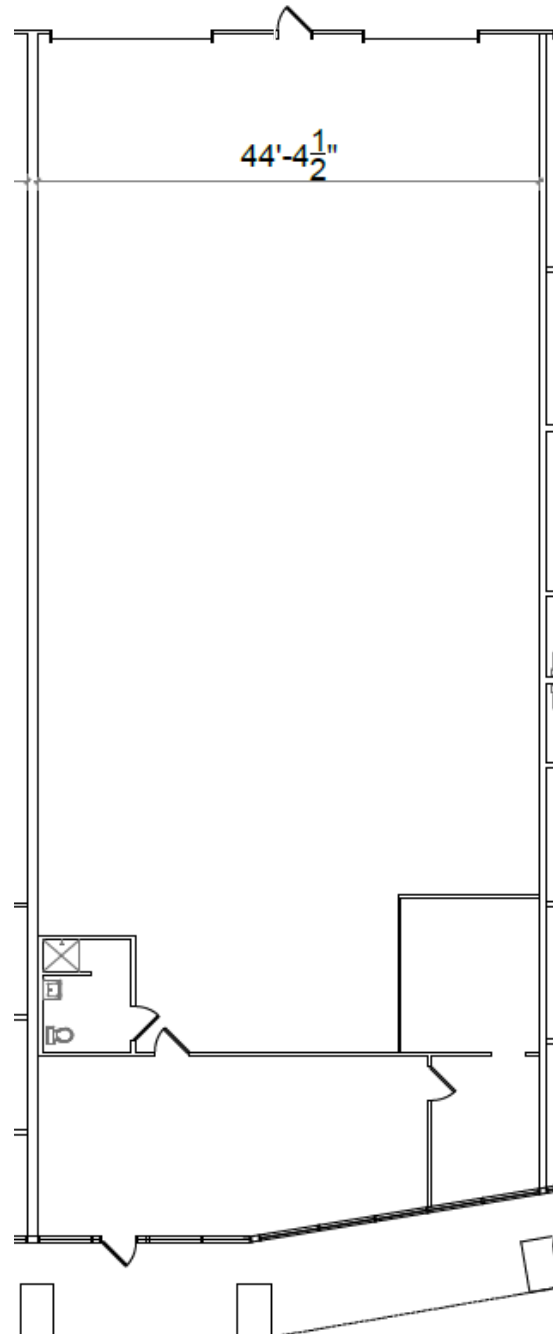


Faropoint

SUITE INFORMATION

Total Size: 5,179 SF
Office: 962 SF
Warehouse: 4,217 SF
Clear Height: 18'
Sprinklers: Wet System
Loading: Two (2) Drive-In Doors
Available: Immediately
Location: +/- 2 miles from I-85
+/- 8 miles from I-285
+/- 20 miles from I-20
+/- 32 miles from Atlanta Airport

FLOORPLAN



For more information, please contact:

MORGAN MCMENAMY

Office: (404) 806 - 6631
Cell: (404) 771 - 1199
mmcmnamy@apexindustrialre.com

TREY WEGHORST

Office: (770) 264 - 9420
Cell: (404) 276 - 9314
tweghorst@apexindustrialre.com

RYAN BLACKBURN

Office: (404) 974 - 2716
Cell: (404) 821 - 7715
rblackburn@apexindustrialre.com



APEX INDUSTRIAL
REAL ESTATE ADVISORS, LLC

Although the information contained therein was provided from sources believed to be reliable, Apex Industrial makes no representation, expressed or implied, as to its accuracy and said information is subject to errors, omissions or changes.