

±7,422 SF of Office/Flex/R&D Space for Sublease



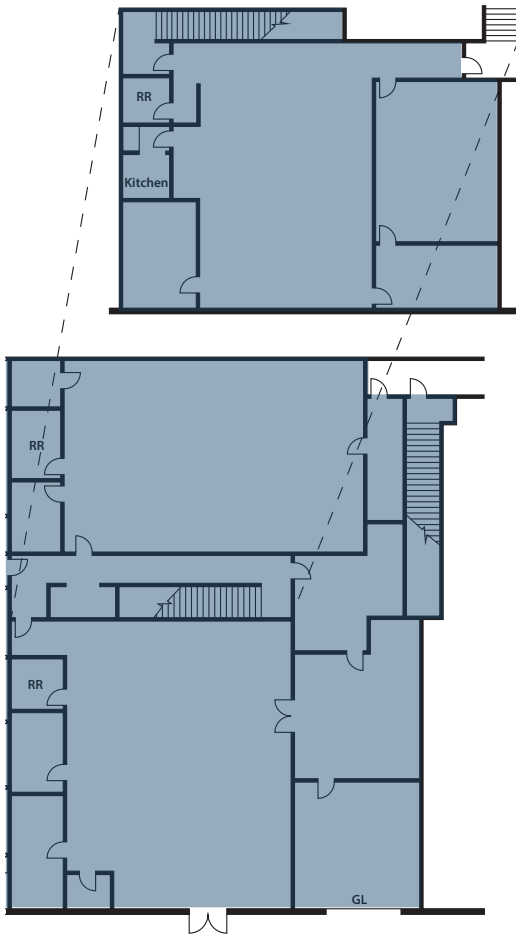
16782 VON KARMAN

UNIT 23 | IRVINE, CALIFORNIA

CBRE

UNIT 23

±7,422 SF



Unit 23 Highlights

- ±7,422 SF of Office/Flex/R&D Space
- Two-Story Unit includes Private Offices, Open Bullpen, Break Room, Meeting/Training Room, Private Restrooms, Kitchen & 100% HVAC Warehouse
- One (1) Ground Level Door
- 18' Warehouse Clearance
- 2:1,000 SF Parking Ratio
- Fire Sprinkler System
- Sublease Term through December 31, 2029



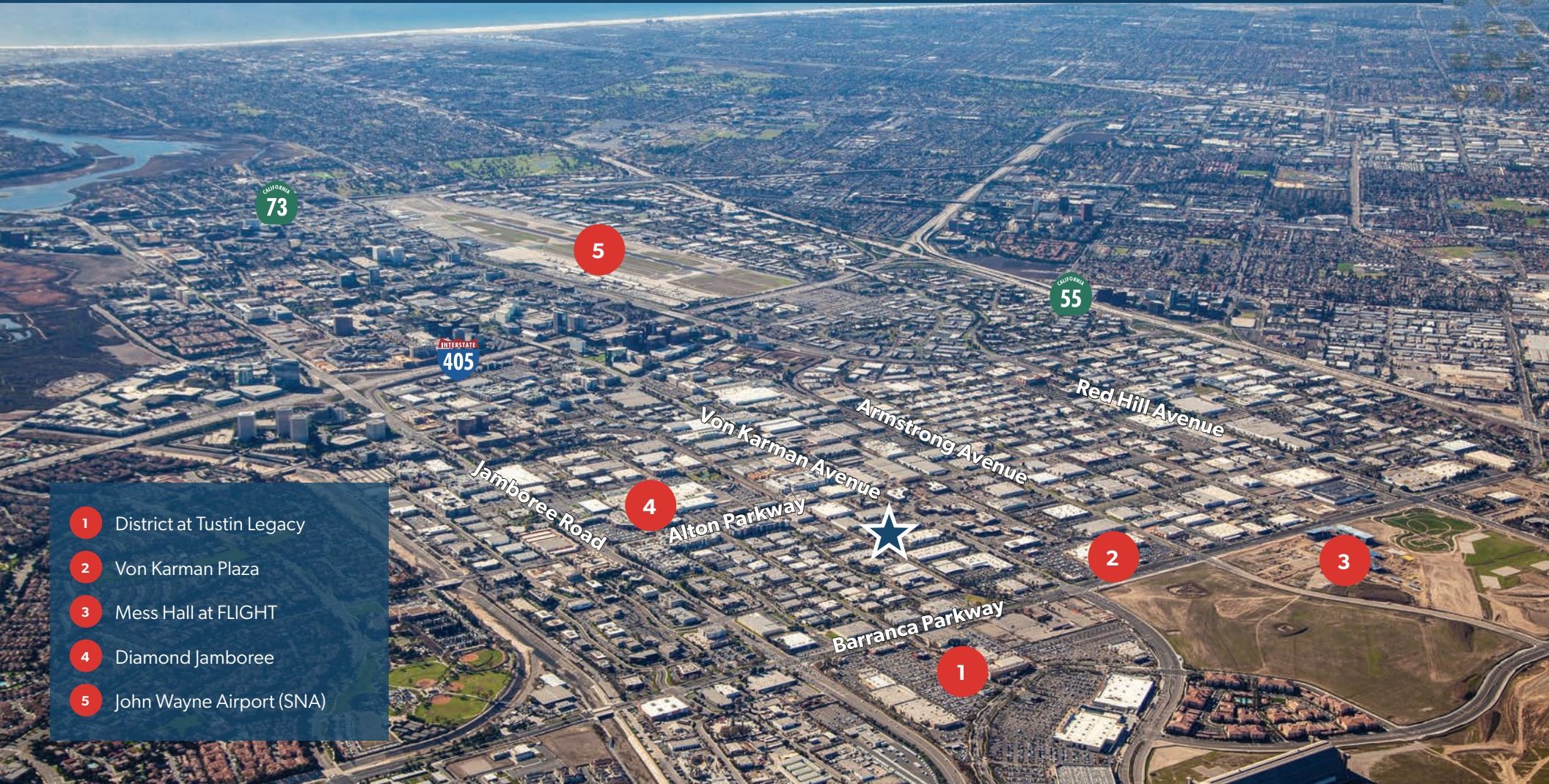
Unit 23



AMENITY MAP

Experience the Ultimate Convenience at 16782 Von Karman.

This prime location, nestled in the IBC, offers unparalleled access to a variety of amenities. Enjoy a short walk to The District at Tustin Legacy and Von Karman Plaza, offering a wide range of retail, dining, and entertainment options. With its central Orange County location and convenient freeway access, 16782 Von Karman is ideally situated for any business.



- 1 District at Tustin Legacy
- 2 Von Karman Plaza
- 3 Mess Hall at FLIGHT
- 4 Diamond Jamboree
- 5 John Wayne Airport (SNA)

16782 VON KARMAN

IRVINE, CALIFORNIA



CONTACTS

Joe Czech

Associate
+1 949 725 8529
joe.czech@cbre.com
Lic. 02159112

Ross Bourne

Executive Vice President
+1 949 725 8537
ross.bourne@cbre.com
Lic. 01436669

© 2023 CBRE, Inc. All rights reserved. This information has been obtained from sources believed reliable but has not been verified for accuracy or completeness. CBRE, Inc. makes no guarantee, representation or warranty and accepts no responsibility or liability as to the accuracy, completeness, or reliability of the information contained herein. You should conduct a careful, independent investigation of the property and verify all information. Any reliance on this information is solely at your own risk. CBRE and the CBRE logo are service marks of CBRE, Inc. All other marks displayed on this document are the property of their respective owners, and the use of such marks does not imply any affiliation with or endorsement of CBRE. Photos herein are the property of their respective owners. Use of these images without the express written consent of the owner is prohibited.

CBRE