



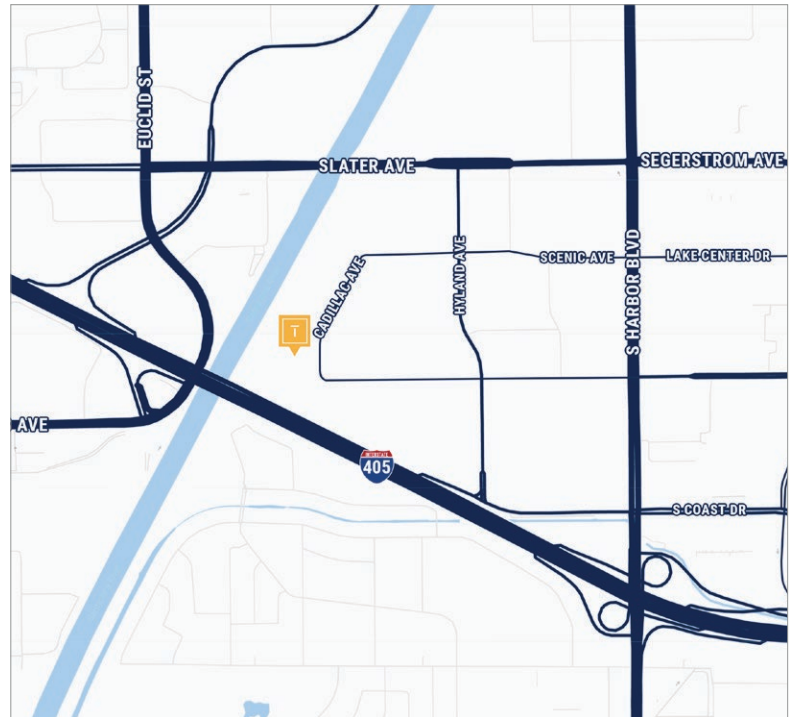
FOR LEASE - ±6,320 SF INDUSTRIAL CONDOMINIUM

3505 CADILLAC AVENUE, SUITES J4 & J5 | COSTA MESA, CA 92626



PROPERTY FEATURES:

- » Located in Cambridge Business Park
- » ±6,320 SF Industrial Condominium
- » ±1,000 SF of Office Space
- » Two (2) Office/Shop Restrooms
- » 18' Warehouse Clear Height
- » 600 Amps of Power (*verify*)
- » Two (2) Ground Level Door
- » 3:1,000 Parking Ratio
- » Fire Sprinklers
- » Corner Unit
- » Excellent Access to the San Diego (405) and Costa Mesa (55) Freeways



CONTACT US:

TIDEMARK

Real Estate Services

**BROKERAGE | INVESTMENTS
PROPERTY MANAGEMENT**

STEPHEN MARGARETIS

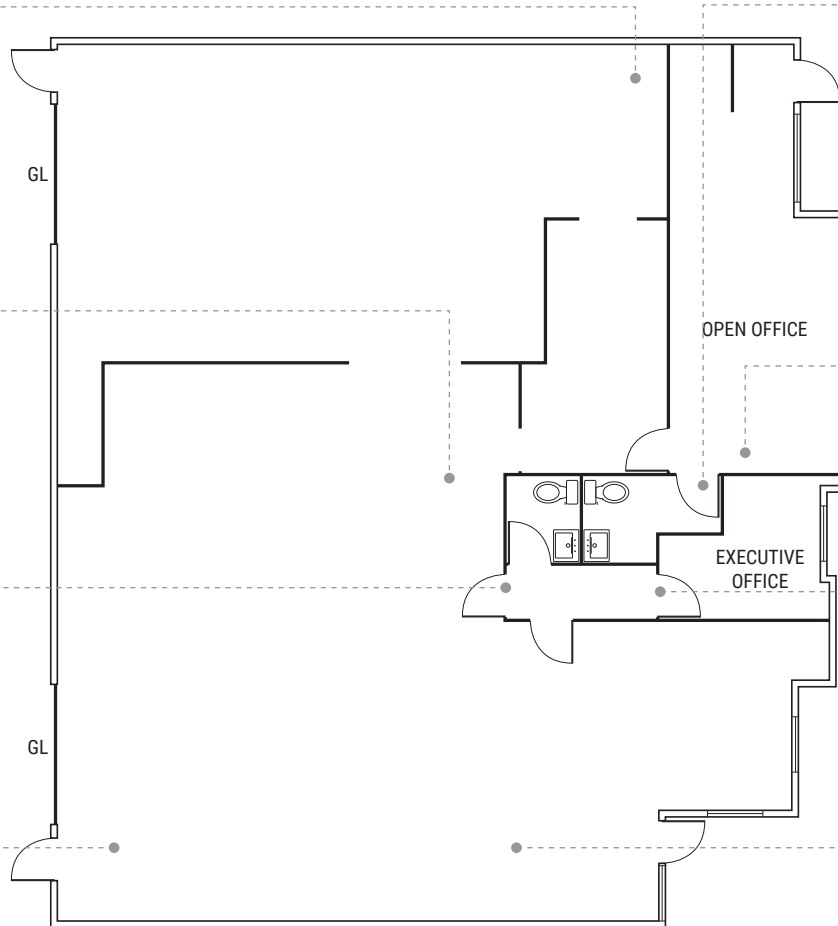
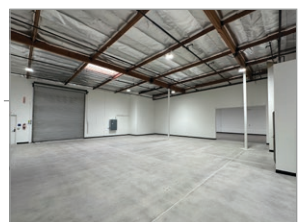
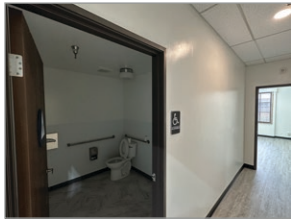
Senior Associate

(949) 439-1988

stephen@tidemarkrealestate.com

DRE Lic. 02112014

DISCLAIMER: The information contained herein has been obtained from the property owner or other third party and is provided to you without verification as to accuracy. We (Tidemark Real Estate Services, Inc., its brokers, employees, agents, principals, officers, directors and affiliates) make no warranty or representation regarding the information, property, or transaction. You and your attorneys, advisors and consultants should conduct your own investigation of the property and transaction.



Not to scale. Not as built.

DISCLAIMER: The information contained herein has been obtained from the property owner or other third party and is provided to you without verification as to accuracy. We (Tidemark Real Estate Services, Inc., its brokers, employees, agents, principals, officers, directors and affiliates) make no warranty or representation regarding the information, property, or transaction. You and your attorneys, advisors and consultants should conduct your own investigation of the property and transaction.