

# 40950 Woodward Ave

*Bloomfield Hills, MI*



- Class "A" Office Building
- Up to 3,921 Square Feet Available
- Recently Renovated Lobby
- Under New Ownership & Management
- Prime Bloomfield Hills Location
- Covered Garage Parking
- Close to Fine & Casual Dining
- Minutes from Bloomfield Hills Country Club
- Turn-Key Suites Offered



## OFFICE BUILDING FOR LEASE

### FOR MORE INFORMATION:

Mason L. Capitani, SIOR  
Managing Partner  
248.637.7795  
MLcapitani@LMCap.com

Aaron Smith  
Vice President  
248.637.3515  
asmith@LMCap.com



**L. MASON CAPITANI**  
CORFAC INTERNATIONAL

**LIBERTY**  
PROPERTY & ASSET MANAGEMENT

248.637.9700 | [LMCap.com](http://LMCap.com)

**40950 Woodward Ave**  
*Bloomfield Hills, MI*



**L. MASON CAPITANI**  
CORFAC INTERNATIONAL

**LIBERTY**  
PROPERTY & ASSET MANAGEMENT



**40950 Woodward Ave**

*Bloomfield Hills, MI*



**L. MASON CAPITANI**  
CORFAC INTERNATIONAL

**LIBERTY**  
PROPERTY & ASSET MANAGEMENT



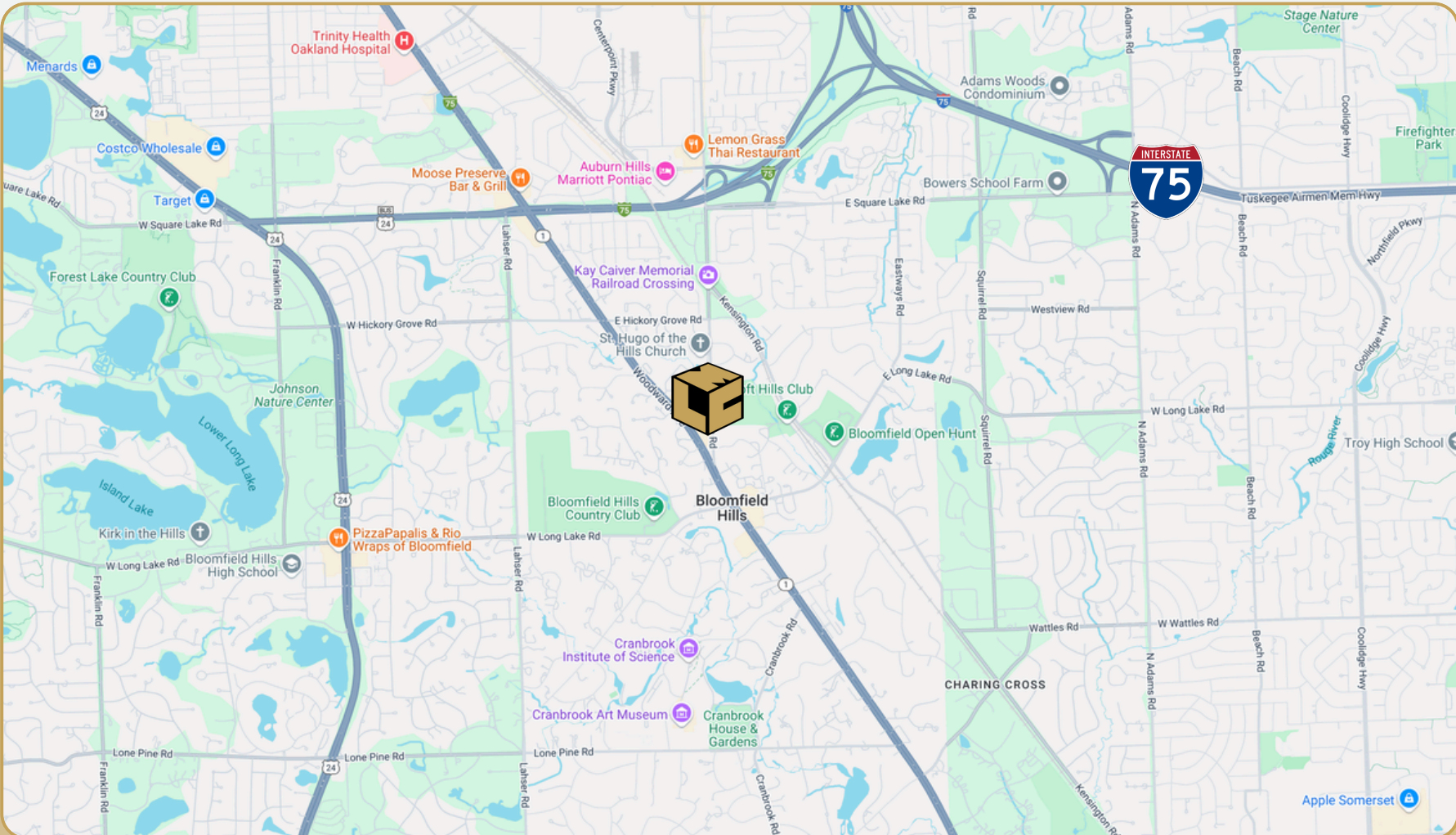
# 40950 Woodward Ave

*Bloomfield Hills, MI*



**L. MASON CAPITANI**  
CORFAC INTERNATIONAL

**LIBERTY**  
PROPERTY & ASSET MANAGEMENT



# 40950 Woodward Ave

Bloomfield Hills, MI



L. MASON CAPITANI  
CORFAC INTERNATIONAL

LIBERTY  
PROPERTY & ASSET MANAGEMENT

## Office Property Details:

### Details:

**Location Description:** Woodward, N of W. Long Lake

**Building Type:** Office

**Class:** A

**Zoning:** Office

**Floors:** 3

**Year Built:** 1984

**Year Renovated:** 2020

**Gross SF:** 110,544 SF

**Total Rentable SF:** 85,742 SF

**Available SF:** 15,605 SF

**Min/Max SF:** 954 SF - 3,921 SF

**Acres:** 4.95

**Multitenant:** Yes

**Parcel ID:** 19-10-426-067

**Property Description:** Class 'A' office building under new ownership and management. Newly renovated lobby. Covered garage parking.

### Economic:

**Min/Max Rental Rate:** \$21.50 - \$24.50

**Rental Terms:** + Electric

**Annual Escalations:** \$0.50/SF

**Load Factor:** 13%

**Occupancy:** Immediate

**Parking::** 4.68/1,000 Spaces

**Partition Allowance:** Negotiable

**Signage:** Lobby/Suite Entry

**Status:** Existing

# 40950 Woodward Ave

*Bloomfield Hills, MI*



**L. MASON CAPITANI**  
CORFAC INTERNATIONAL

**LIBERTY**  
PROPERTY & ASSET MANAGEMENT

## Available Suites:

<b>Suite 110:</b>	954 SF
<b>Suite 115:</b>	1,584 SF
<b>Suite 120:</b>	3,277 SF
<b>Suite 130:</b>	1,706 SF
<b>Suite 133:</b>	1,052 SF
<b>Suite 160:</b>	1,644 SF
<b>Suite 205:</b>	3,921 SF
<b>Suite 340:</b>	1,467 SF

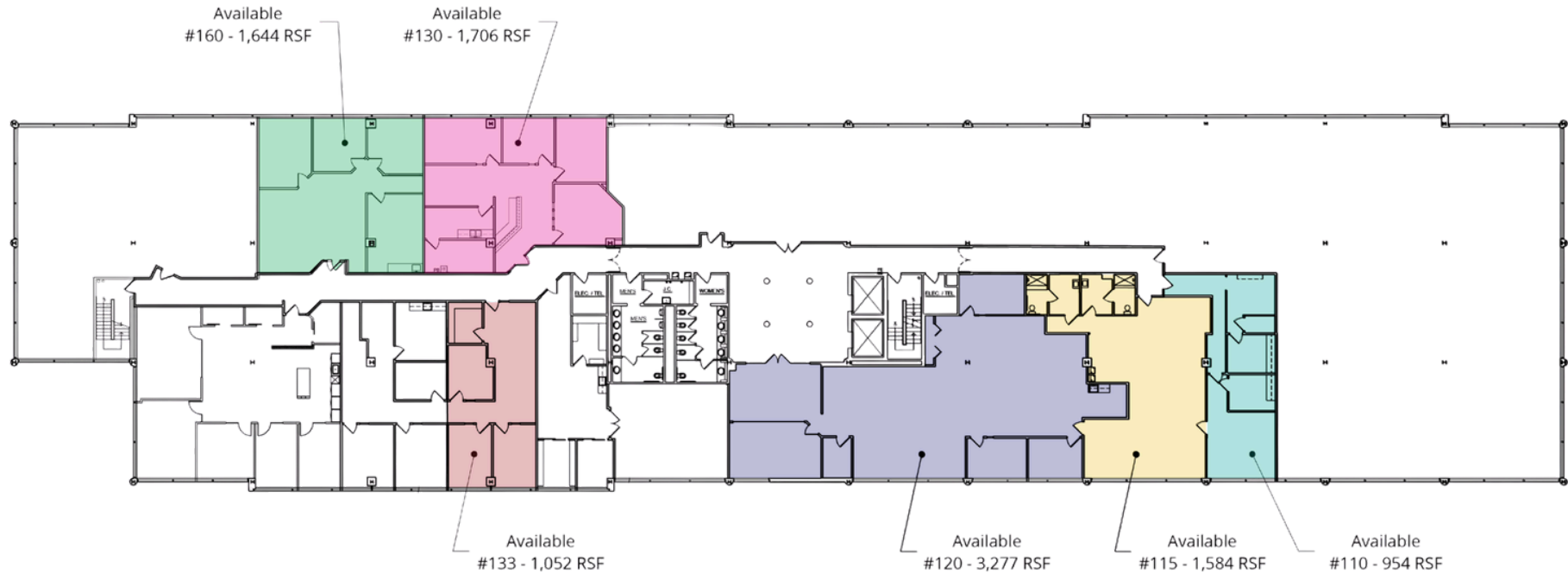


# 40950 Woodward Ave

Bloomfield Hills, MI



## First Floor Vacancies



Suite Number	Square Footage	Lease Rate	Video Tour
110	954 SF	\$21.50 SF/yr	-
115	1,584 SF	\$21.50 SF/yr	-
120	3,277 SF	\$21.50 SF/yr	<a href="#">View Here</a>
130	1,706 SF	\$24.50 SF/yr	-

Suite Number	Square Footage	Lease Rate	Video Tour
133	1,052 SF	\$21.50 SF/yr	-
160	1,644 SF	\$24.50 SF/yr	-
130/160	3,380 SF	\$24.50 SF/yr	-

# 40950 Woodward Ave

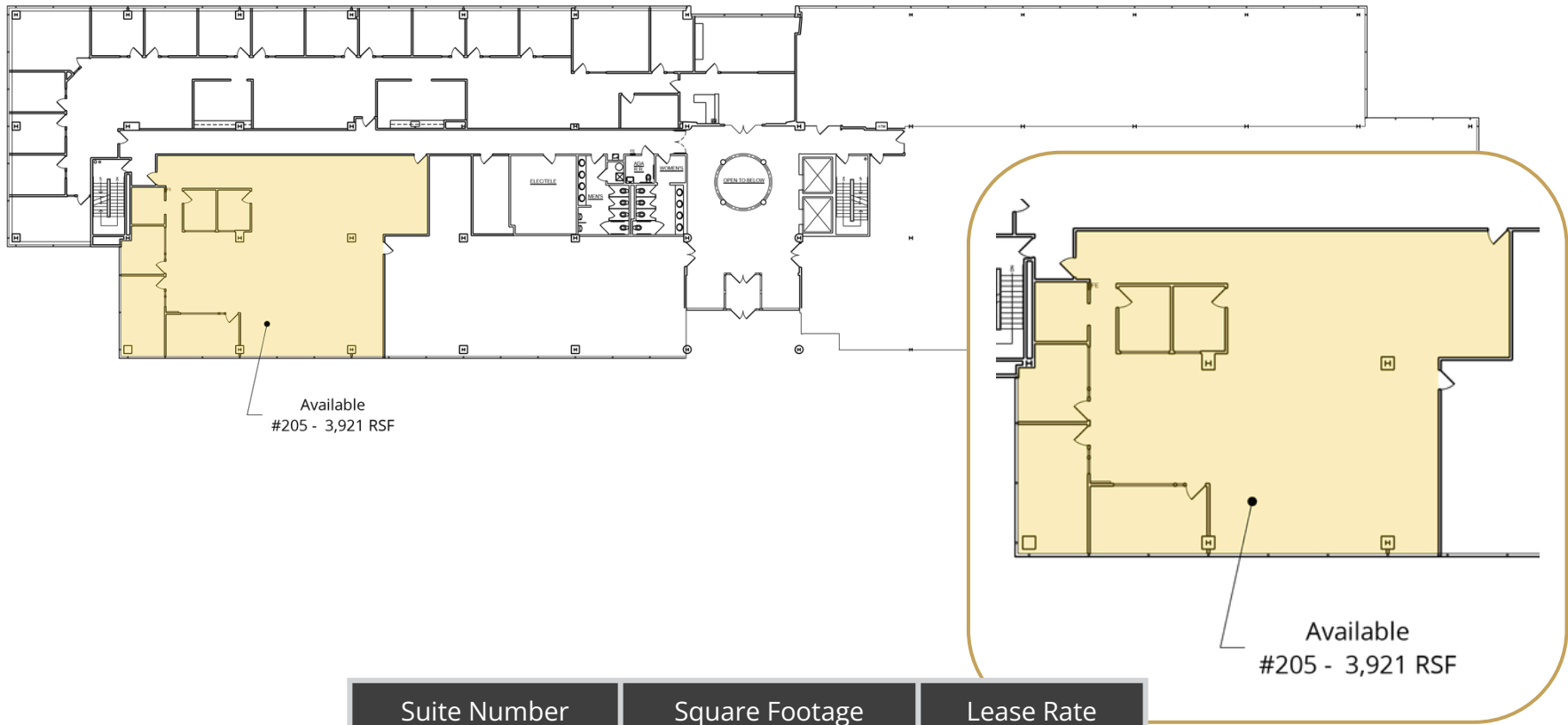
Bloomfield Hills, MI



L. MASON CAPITANI  
CORFAC INTERNATIONAL

LIBERTY  
PROPERTY & ASSET MANAGEMENT

## Second Floor Vacancy



Suite Number	Square Footage	Lease Rate
205	3,921	\$24.50 SF/yr

# 40950 Woodward Ave

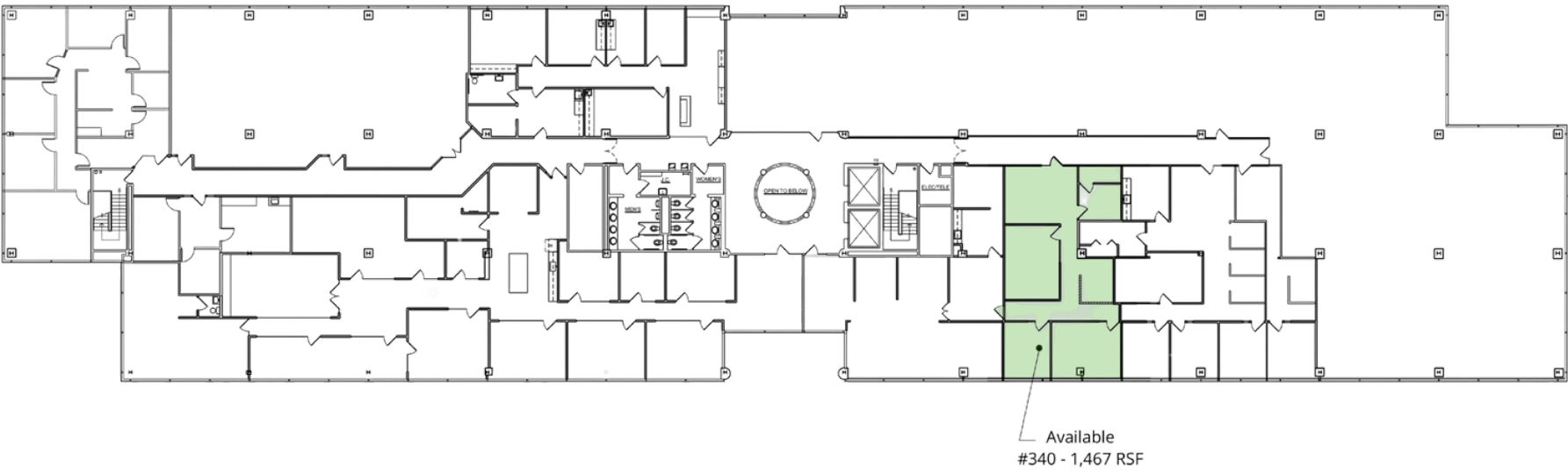
Bloomfield Hills, MI



L. MASON CAPITANI  
CORFAC INTERNATIONAL

LIBERTY  
PROPERTY & ASSET MANAGEMENT

## Third Floor Vacancies



Suite Number	Square Footage	Lease Rate
340	1,467 SF	\$24.50 SF/yr