

12,000 - 22,188 SF  
INDUSTRIAL



FOR LEASE



## 190-194 E Maple

Troy, Michigan 48083

### Property Highlights

- 100% Air Conditioned & Sprinklered
- Main Road Signage
- 12' to 26' Clear Height in the Shop
- Prime Commercial Space with High Visibility
- Former Showroom with Warehousing Compatibility
- Versatile Floor Plans Adaptable to Various Business Needs
- Ample Parking for Tenants and Visitors
- Easy Access to Major Thoroughfares
- Professional Environment Designed to Elevate Brand Presence
- Well-Maintained Property Showcasing Exceptional Quality

### OFFERING SUMMARY

Lease Rate:	\$12.50 SF/yr (NNN)
Available SF:	12,000 - 22,188 SF
Building Size:	63,703 SF

### DEMOGRAPHICS

	1 MILE	2 MILES	3 MILES
Total Households	5,259	19,560	44,619
Total Population	10,482	39,839	94,024
Average HH Income	\$79,606	\$83,723	\$91,542

**NAI Farbman**

Commercial Real Estate Services, Worldwide.

[www.naifarbman.com](http://www.naifarbman.com)

**Nathan Casey**  
Vice President | 248.351.4391  
[casey@farbman.com](mailto:casey@farbman.com)

**Daniel McCleary**  
Vice President | 248.351.4384  
[mcclary@farbman.com](mailto:mcclary@farbman.com)

**Aiden Bracken**  
Sales Associate | 248.351.4380  
[bracken@farbman.com](mailto:bracken@farbman.com)

NO WARRANTY, EXPRESS OR IMPLIED, IS MADE AS TO THE ACCURACY OF THE INFORMATION CONTAINED HEREIN. THIS INFORMATION IS SUBMITTED SUBJECT TO ERRORS, OMISSIONS, CHANGE OF PRICE, RENTAL OR OTHER CONDITIONS, WITHDRAWAL WITHOUT NOTICE, AND IS SUBJECT TO ANY SPECIAL LISTING CONDITIONS IMPOSED BY OUR PRINCIPALS, COOPERATING BROKERS, BUYERS, TENANTS AND OTHER PARTIES WHO RECEIVE THIS DOCUMENT SHOULD NOT RELY ON IT, BUT SHOULD USE IT AS A STARTING POINT OF ANALYSIS, AND SHOULD INDEPENDENTLY CONFIRM THE ACCURACY OF THE INFORMATION CONTAINED HEREIN THROUGH A DUE DILIGENCE REVIEW OF THE BOOKS, RECORDS, FILES AND DOCUMENTS THAT CONSTITUTE RELIABLE SOURCES OF THE INFORMATION DESCRIBED HEREIN. LOGOS ARE FOR IDENTIFICATION PURPOSES ONLY AND MAY BE TRADEMARKS OF THEIR RESPECTIVE COMPANIES. NAI Farbman, INC. CA BRE LIC. #01990696.

# 12,000 - 22,188 SF INDUSTRIAL



## FOR LEASE



Commercial Real Estate Services, Worldwide.

[www.naifarbman.com](http://www.naifarbman.com)

**Nathan Casey**  
Vice President | 248.351.4391  
[casey@farbman.com](mailto:casey@farbman.com)

**Daniel McCleary**  
Vice President | 248.351.4384  
[mcclary@farbman.com](mailto:mcclary@farbman.com)

**Aiden Bracken**  
Sales Associate | 248.351.4380  
[bracken@farbman.com](mailto:bracken@farbman.com)

NO WARRANTY, EXPRESS OR IMPLIED, IS MADE AS TO THE ACCURACY OF THE INFORMATION CONTAINED HEREIN. THIS INFORMATION IS SUBMITTED SUBJECT TO ERRORS, OMISSIONS, CHANGE OF PRICE, RENTAL OR OTHER CONDITIONS, WITHDRAWAL WITHOUT NOTICE, AND IS SUBJECT TO ANY SPECIAL LISTING CONDITIONS IMPOSED BY OUR PRINCIPALS. COOPERATING BROKERS, BUYERS, TENANTS AND OTHER PARTIES WHO RECEIVE THIS DOCUMENT SHOULD NOT RELY ON IT, BUT SHOULD USE IT AS A STARTING POINT OF ANALYSIS, AND SHOULD INDEPENDENTLY CONFIRM THE ACCURACY OF THE INFORMATION CONTAINED HEREIN THROUGH A DUE DILIGENCE REVIEW OF THE BOOKS, RECORDS, FILES AND DOCUMENTS THAT CONSTITUTE RELIABLE SOURCES OF THE INFORMATION DESCRIBED HEREIN. LOGOS ARE FOR IDENTIFICATION PURPOSES ONLY AND MAY BE TRADEMARKS OF THEIR RESPECTIVE COMPANIES. NAI Farbman, INC. CA BRE LIC. #01990696.

12,000 - 22,188 SF  
INDUSTRIAL



FOR LEASE



**NAI Farbman**

Commercial Real Estate Services, Worldwide.

[www.naifarbman.com](http://www.naifarbman.com)

**Nathan Casey**  
Vice President | 248.351.4391  
[casey@farbman.com](mailto:casey@farbman.com)

**Daniel McCleary**  
Vice President | 248.351.4384  
[mccleary@farbman.com](mailto:mccleary@farbman.com)

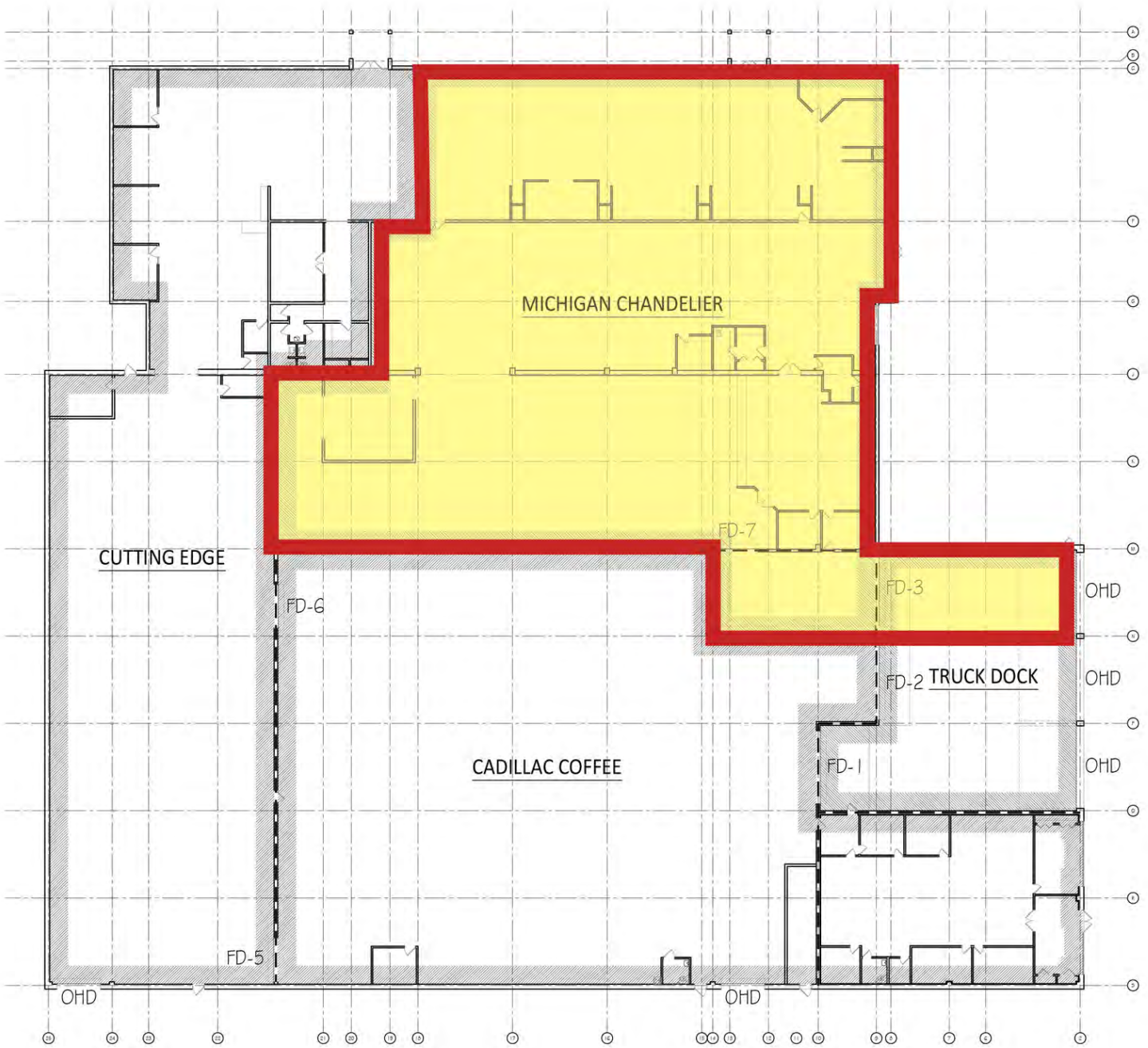
**Aiden Bracken**  
Sales Associate | 248.351.4380  
[bracken@farbman.com](mailto:bracken@farbman.com)

NO WARRANTY, EXPRESS OR IMPLIED, IS MADE AS TO THE ACCURACY OF THE INFORMATION CONTAINED HEREIN. THIS INFORMATION IS SUBMITTED SUBJECT TO ERRORS, OMISSIONS, CHANGE OF PRICE, RENTAL OR OTHER CONDITIONS, WITHDRAWAL WITHOUT NOTICE, AND IS SUBJECT TO ANY SPECIAL LISTING CONDITIONS IMPOSED BY OUR PRINCIPALS, COOPERATING BROKERS, BUYERS, TENANTS AND OTHER PARTIES WHO RECEIVE THIS DOCUMENT SHOULD NOT RELY ON IT, BUT SHOULD USE IT AS A STARTING POINT OF ANALYSIS, AND SHOULD INDEPENDENTLY CONFIRM THE ACCURACY OF THE INFORMATION CONTAINED HEREIN THROUGH A DUE DILIGENCE REVIEW OF THE BOOKS, RECORDS, FILES AND DOCUMENTS THAT CONSTITUTE RELIABLE SOURCES OF THE INFORMATION DESCRIBED HEREIN. LOGOS ARE FOR IDENTIFICATION PURPOSES ONLY AND MAY BE TRADEMARKS OF THEIR RESPECTIVE COMPANIES. NAI Farbman, INC. CA BRE LIC. #01990696.

12,000 - 22,188 SF  
INDUSTRIAL



FOR LEASE



 **COMPOSITE FLOOR PLAN**  
SCALE: 1/16" = 1'-0"



Commercial Real Estate Services, Worldwide.

www.naifarbman.com

**Nathan Casey**  
Vice President | 248.351.4391  
casey@farbman.com

**Daniel McCleary**  
Vice President | 248.351.4384  
mccleary@farbman.com

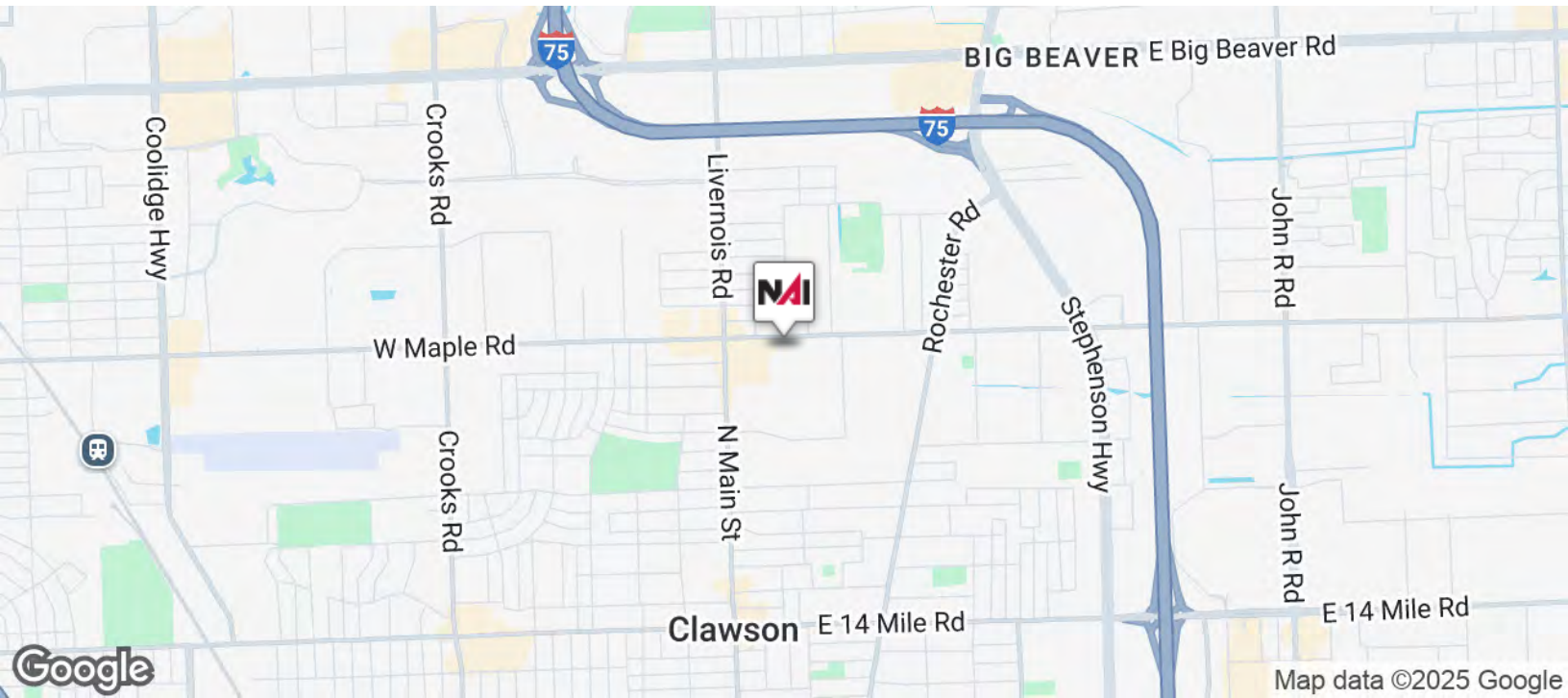
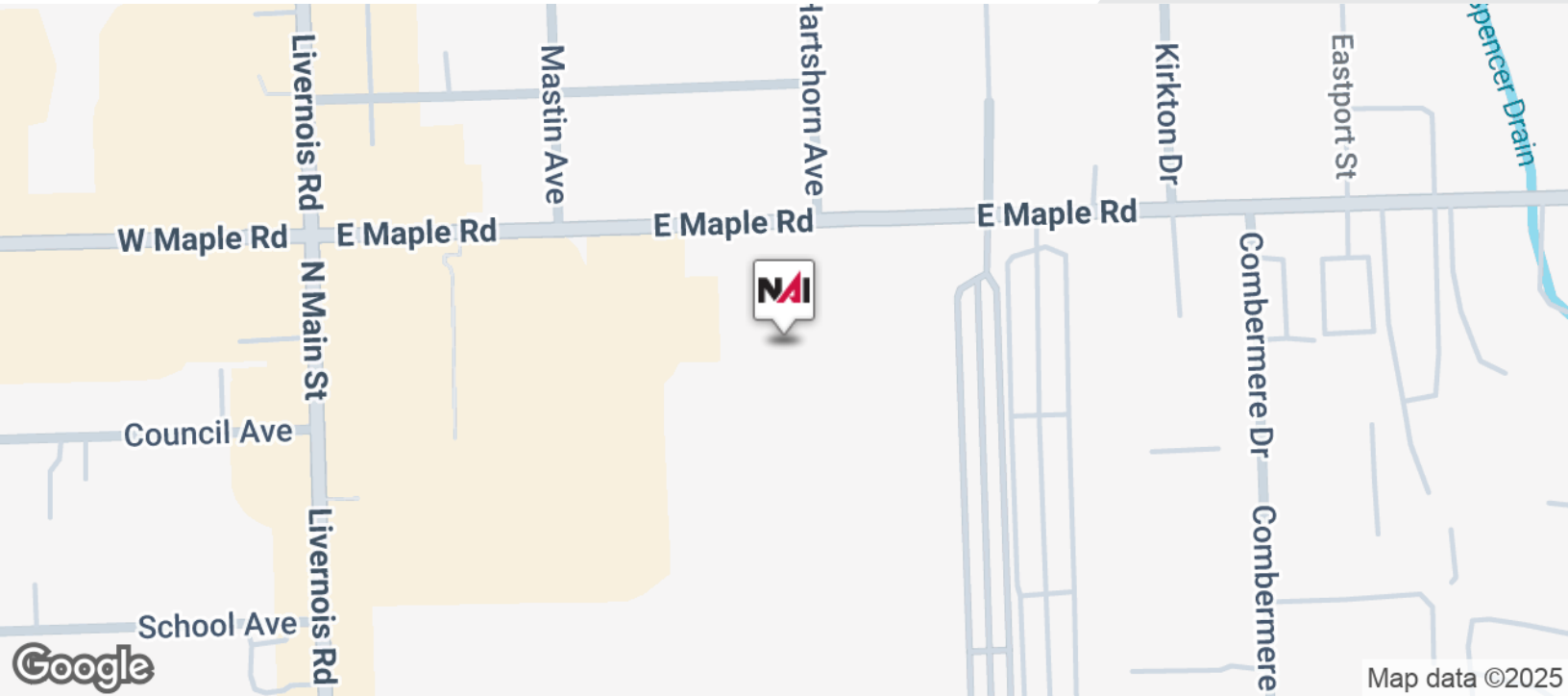
**Aiden Bracken**  
Sales Associate | 248.351.4380  
bracken@farbman.com

NO WARRANTY, EXPRESS OR IMPLIED, IS MADE AS TO THE ACCURACY OF THE INFORMATION CONTAINED HEREIN. THIS INFORMATION IS SUBMITTED SUBJECT TO ERRORS, OMISSIONS, CHANGE OF PRICE, RENTAL OR OTHER CONDITIONS, WITHDRAWAL WITHOUT NOTICE, AND IS SUBJECT TO ANY SPECIAL LISTING CONDITIONS IMPOSED BY OUR PRINCIPALS. COOPERATING BROKERS, BUYERS, TENANTS AND OTHER PARTIES WHO RECEIVE THIS DOCUMENT SHOULD NOT RELY ON IT, BUT SHOULD USE IT AS A STARTING POINT OF ANALYSIS, AND SHOULD INDEPENDENTLY CONFIRM THE ACCURACY OF THE INFORMATION CONTAINED HEREIN THROUGH A DUE DILIGENCE REVIEW OF THE BOOKS, RECORDS, FILES AND DOCUMENTS THAT CONSTITUTE RELIABLE SOURCES OF THE INFORMATION DESCRIBED HEREIN. LOGOS ARE FOR IDENTIFICATION PURPOSES ONLY AND MAY BE TRADEMARKS OF THEIR RESPECTIVE COMPANIES. NAI Farbman, INC. CA BRE LIC. #01990696.

12,000 - 22,188 SF  
INDUSTRIAL



FOR LEASE



Commercial Real Estate Services, Worldwide.

[www.naifarbman.com](http://www.naifarbman.com)

**Nathan Casey**  
Vice President | 248.351.4391  
[casey@farbman.com](mailto:casey@farbman.com)

**Daniel McCleary**  
Vice President | 248.351.4384  
[mcclary@farbman.com](mailto:mcclary@farbman.com)

**Aiden Bracken**  
Sales Associate | 248.351.4380  
[bracken@farbman.com](mailto:bracken@farbman.com)

NO WARRANTY, EXPRESS OR IMPLIED, IS MADE AS TO THE ACCURACY OF THE INFORMATION CONTAINED HEREIN. THIS INFORMATION IS SUBMITTED SUBJECT TO ERRORS, OMISSIONS, CHANGE OF PRICE, RENTAL OR OTHER CONDITIONS, WITHDRAWAL WITHOUT NOTICE, AND IS SUBJECT TO ANY SPECIAL LISTING CONDITIONS IMPOSED BY OUR PRINCIPALS, COOPERATING BROKERS, BUYERS, TENANTS AND OTHER PARTIES WHO RECEIVE THIS DOCUMENT SHOULD NOT RELY ON IT, BUT SHOULD USE IT AS A STARTING POINT OF ANALYSIS, AND SHOULD INDEPENDENTLY CONFIRM THE ACCURACY OF THE INFORMATION CONTAINED HEREIN THROUGH A DUE DILIGENCE REVIEW OF THE BOOKS, RECORDS, FILES AND DOCUMENTS THAT CONSTITUTE RELIABLE SOURCES OF THE INFORMATION DESCRIBED HEREIN. LOGOS ARE FOR IDENTIFICATION PURPOSES ONLY AND MAY BE TRADEMARKS OF THEIR RESPECTIVE COMPANIES. NAI Farbman, INC. CA BRE LIC. #01990696.