

3,427 SF INDUSTRIAL SPACE AVAILABLE BUILDING 4, SUITES 400-410

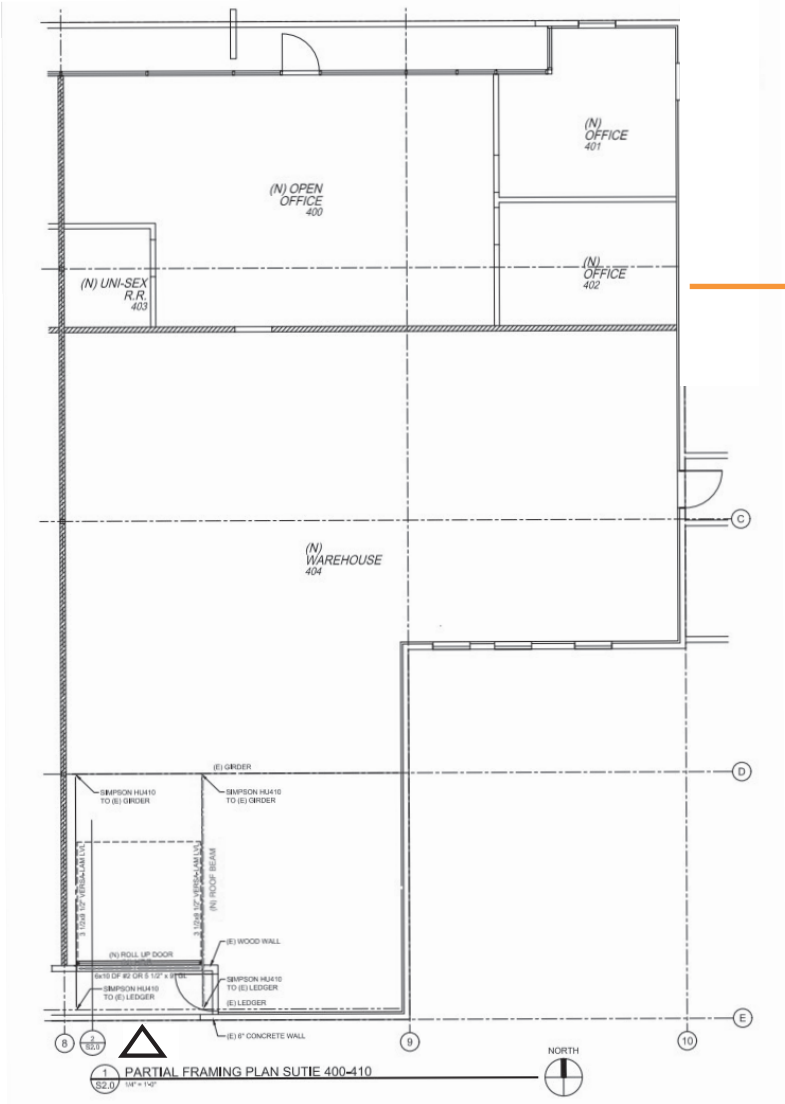
11900 NE 95TH STREET, SUITES 400-410, VANCOUVER, WA 98682

SUITES 400-410 HIGHLIGHTS & FEATURES

- 1,264 SF Office Space
- Open Office Area
- 2 Private Offices
- Restroom
- 1 Grade Door
- 11' Clear Height
- 208 Volt, 3 Phase Power
- Ample Parking
- On-Site Property Management
- Restaurants and Retail Amenities nearby:
Los Jalapenos, Columbia Credit Union,
Papa John's Pizza, Chevron, Seize the Bagel
& Many More

paddencp.com

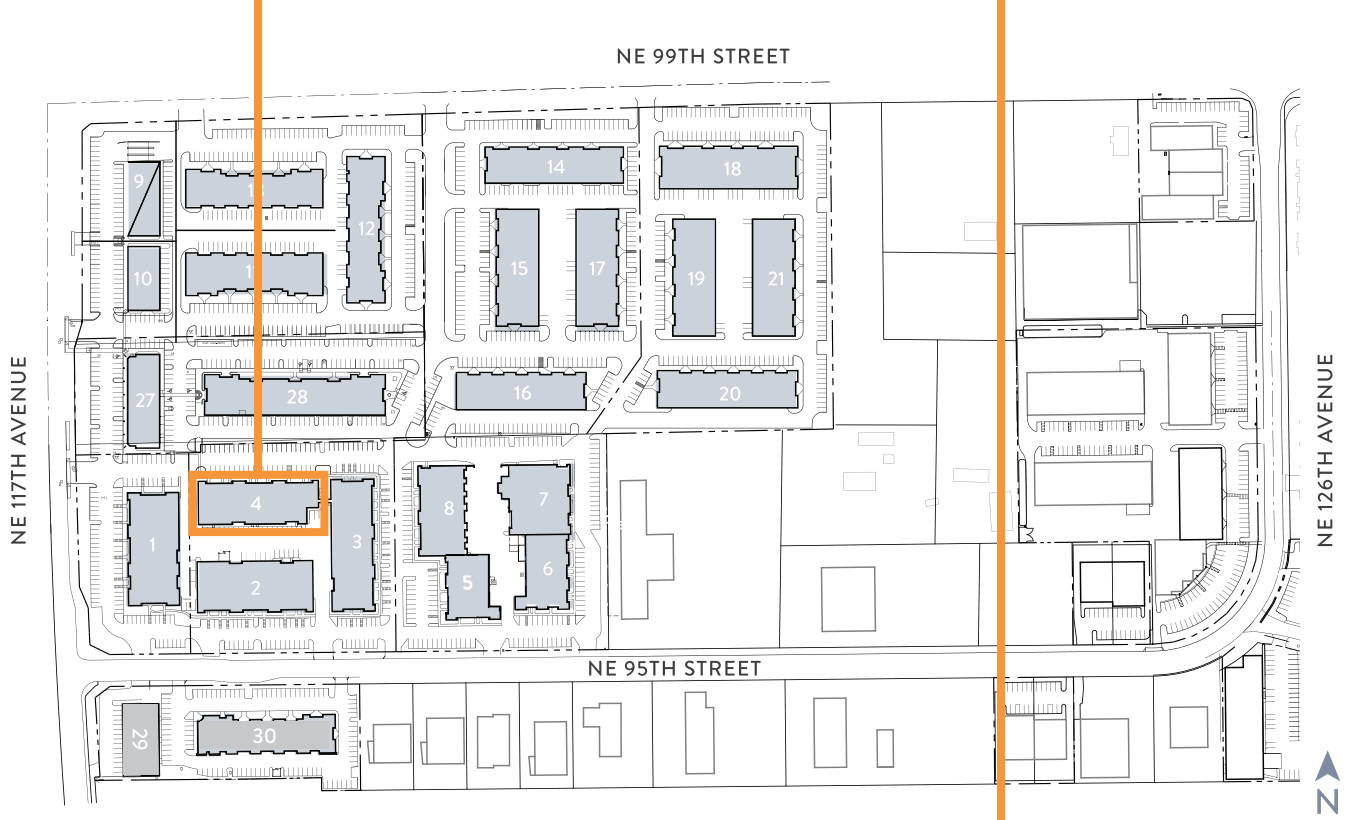
Available: Now



△ = Grade Door



NOW AVAILABLE! BUILDING 4, SUITES 400-410
11900 NE 95th Street, Suites 400-410, Vancouver, WA 98682



LEASING CONTACTS

Coleman Brown, CCIM, Principal Broker
Columbia Commercial, LLC
Coleman@CCPprop.com
360.952.4758

paddencp.com

