

EL SEGUNDO BLVD.



E. CARLIN AVE.

529 & 533 CARLIN ST. COMPTON | CA

± 43,569 SF OF LAND AVAILABLE



FENCED
YARD



13 MILES
FROM PORTS



105 FWY
PROXIMITY



12 MILES
TO LAX

FOR MORE INFORMATION, CONTACT:

Brad Levin
Executive Vice President | Principal
310.538.6728
blevin@daumcommercial.com
CA License #01020885

Anthony Bergeman  SIR
Senior Director
310.525.1920
anthony.bergeman@cushwake.com
CA License #01841828



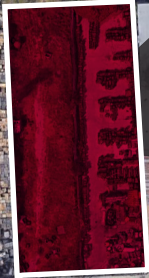
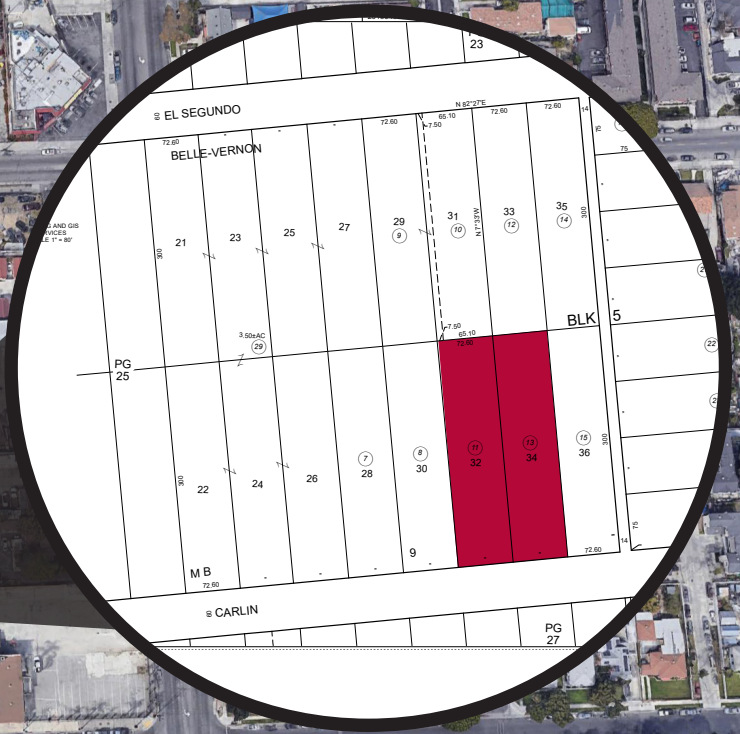
D/AQ Corp. #01129558. Maps Courtesy ©Google & ©Microsoft. Although all information is furnished regarding for sale, rental or financing is from sources deemed reliable, such information has not been verified and no express representation is made nor is any to be implied as to the accuracy thereof, and it is submitted subject to errors, omissions, changes of price, rental or other conditions, prior sale, lease or financing, or withdrawal without notice.

529 & 533 CARLIN ST. COMPTON | CA

EL SEGUNDO BLVD.

E. CARLIN AVE.

N. SANTA FE AVE.



PROPERTY FEATURES

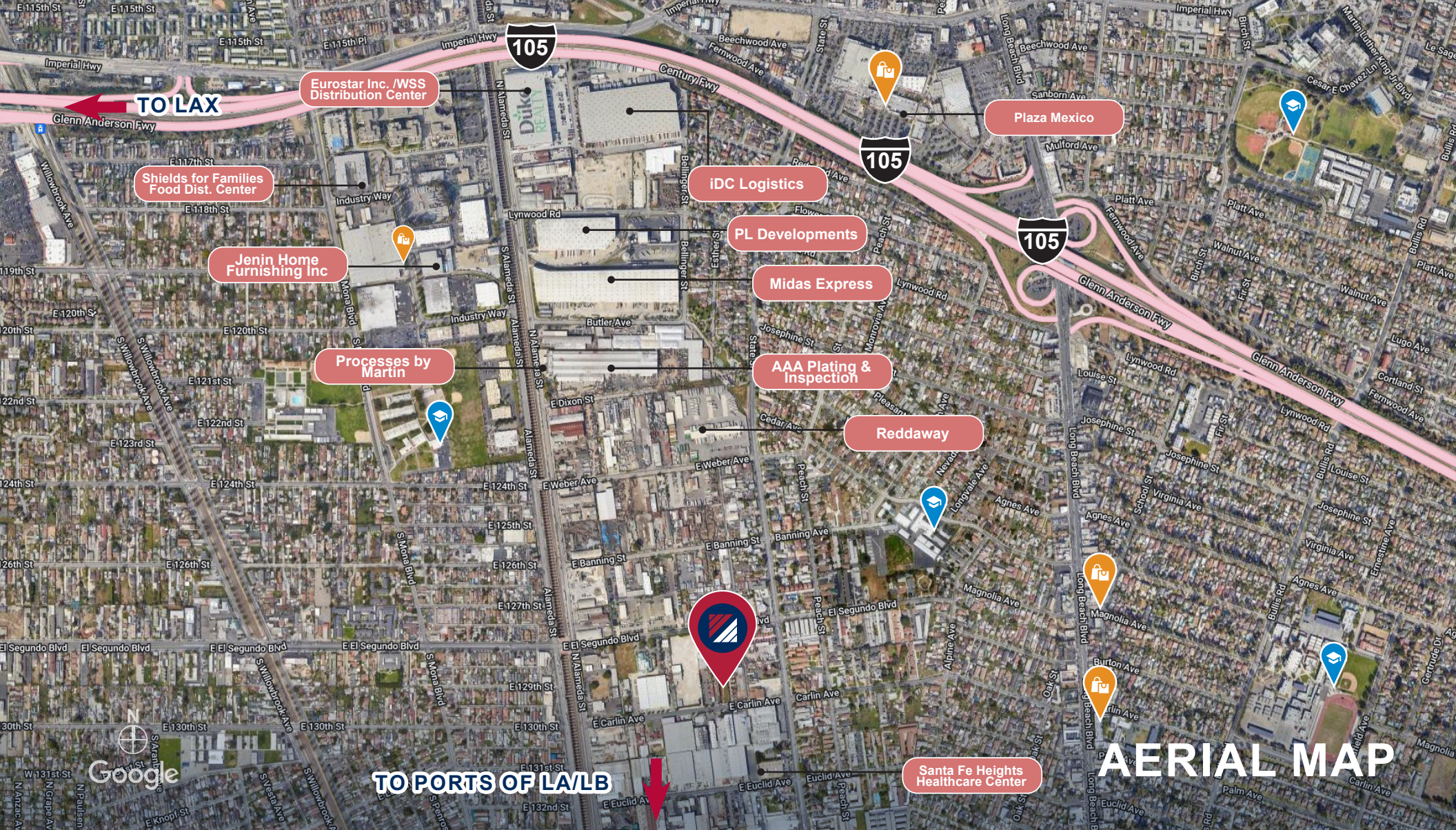
FOR LEASE

± 43,569 SF OF LAND

- Prime Alameda Corridor Adjacent Location
- Excellent Access to the 105, 710, 110 & 91 Freeways
- 13 miles to Ports of Long Beach and Los Angeles
- 12 miles to LAX
- Fenced Yard
- Can be combined with 520 & 526 El Segundo Blvd. for a total of ± 87,421 SF

D/AQ Corp. #01129558. Maps Courtesy ©Google & ©Microsoft. Although all information is furnished regarding for sale, rental or financing is from sources deemed reliable, such information has not been verified and no express representation is made nor is any to be implied as to the accuracy thereof, and it is submitted subject to errors, omissions, changes of price, rental or other conditions, prior sale, lease or financing, or withdrawal without notice.





FOR LEASE
± 43,569 SF OF LAND

529 & 533
CARLIN ST.
 COMPTON | CA

FOR MORE INFORMATION, CONTACT:

Brad Levin
 Executive Vice President | Principal
 310.538.6728
 blevin@daumcommercial.com
 CA License #01020885

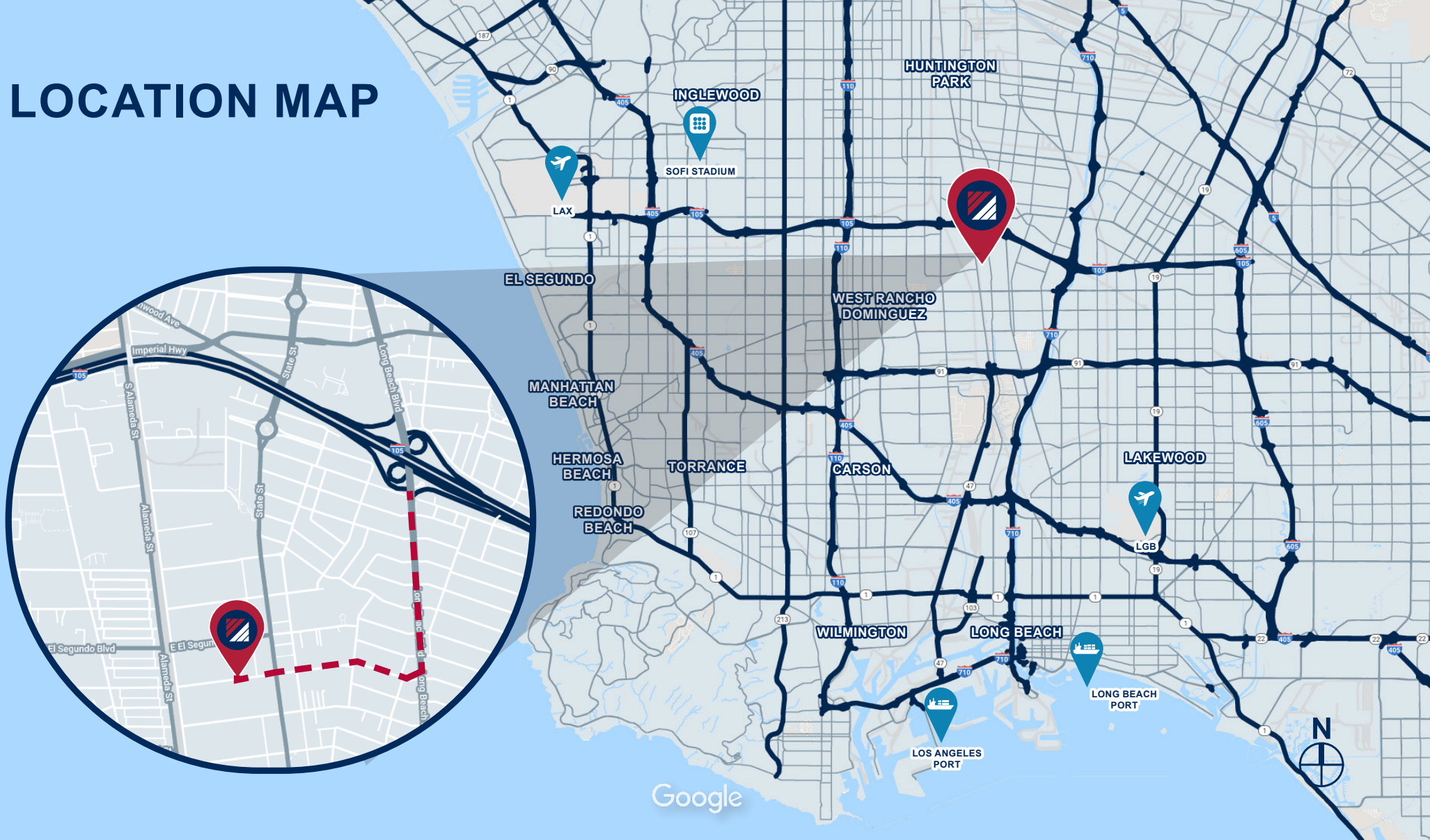
Anthony Bergeman  SIO
 Senior Director
 310.525.1920
 anthony.bergeman@cushwake.com
 CA License #01841828

AERIAL MAP

D/AQ Corp. #01129558. Maps Courtesy ©Google & ©Microsoft. Although all information is furnished regarding for sale, rental or financing is from sources deemed reliable, such information has not been verified and no express representation is made nor is any to be implied as to the accuracy thereof, and it is submitted subject to errors, omissions, changes of price, rental or other conditions, prior sale, lease or financing, or withdrawal without notice.



LOCATION MAP



FOR LEASE
± 43,569 SF OF LAND

529 & 533
CARLIN ST.
COMPTON | CA

FOR MORE INFORMATION, CONTACT:

Brad Levin
Executive Vice President | Principal
310.538.6728
blevin@daumcommercial.com
CA License #01020885

Anthony Bergeman 
Senior Director
310.525.1920
anthony.bergeman@cushwake.com
CA License #01841828

D/AQ Corp. #01129558. Maps Courtesy ©Google & ©Microsoft. Although all information is furnished regarding for sale, rental or financing is from sources deemed reliable, such information has not been verified and no express representation is made nor is any to be implied as to the accuracy thereof, and it is submitted subject to errors, omissions, changes of price, rental or other conditions, prior sale, lease or financing, or withdrawal without notice.

