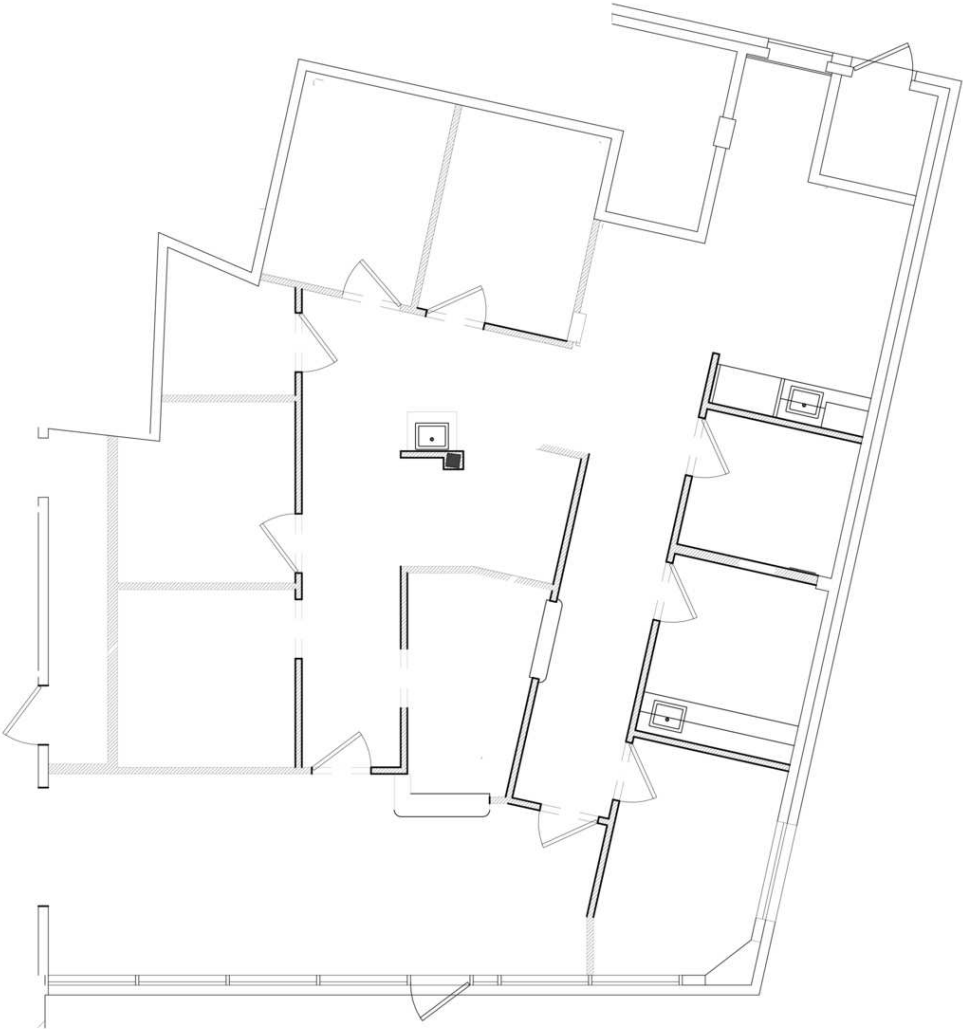


# TOWN EAST MEDICAL PLAZA

18640 Lyndon B Johnson Fwy | Mesquite, TX 75150

Suite 102

2,017 SF



**Nat Klein**

214.695.5786  
nklein@lpc.com

**Zoë Mysing**

504.982.5799  
zmysing@lpc.com

**Lincoln**