

CORPORATE SQUARE I

310 Regency Parkway
Omaha, NE 68114

JOE SLOSBURG
402.390.5105
joe@slosburg.com



OFFICE SPACE

FOR LEASE

- Term: 5 Years
- Base Rent: \$13.75 PSF
- Lease Type: NNN
- Maximum Contiguous: 5,963 SF
- TI Allowance: Negotiable



PROPERTY FEATURES

- Building signage available based on SF
- Central location offering great exposure access and visibility to Regency Parkway
- Easy access to I-680, West Dodge Street, and Pacific Street
- Private entrances
- Within walking distance to numerous restaurants, hotels, banks, and Regency Fashion Court
- Abundant parking



PROPERTY INFORMATION

- Year Built/Renovated: 1978/2011
- Floors: 1
- GLA: 17,795 SF
- Parking: 131 stalls, cross easement parking with Corporate Square II

AVAILABLE SPACE

- Suite 125: 3,940 SF
- Suite 130: 2,023 SF

SLOSBURG
REAL PROPERTY®

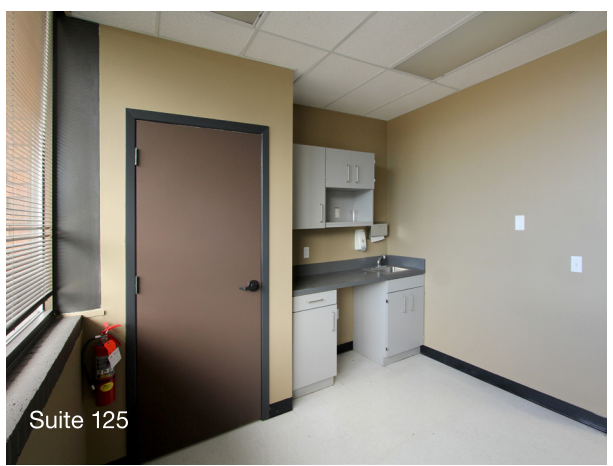
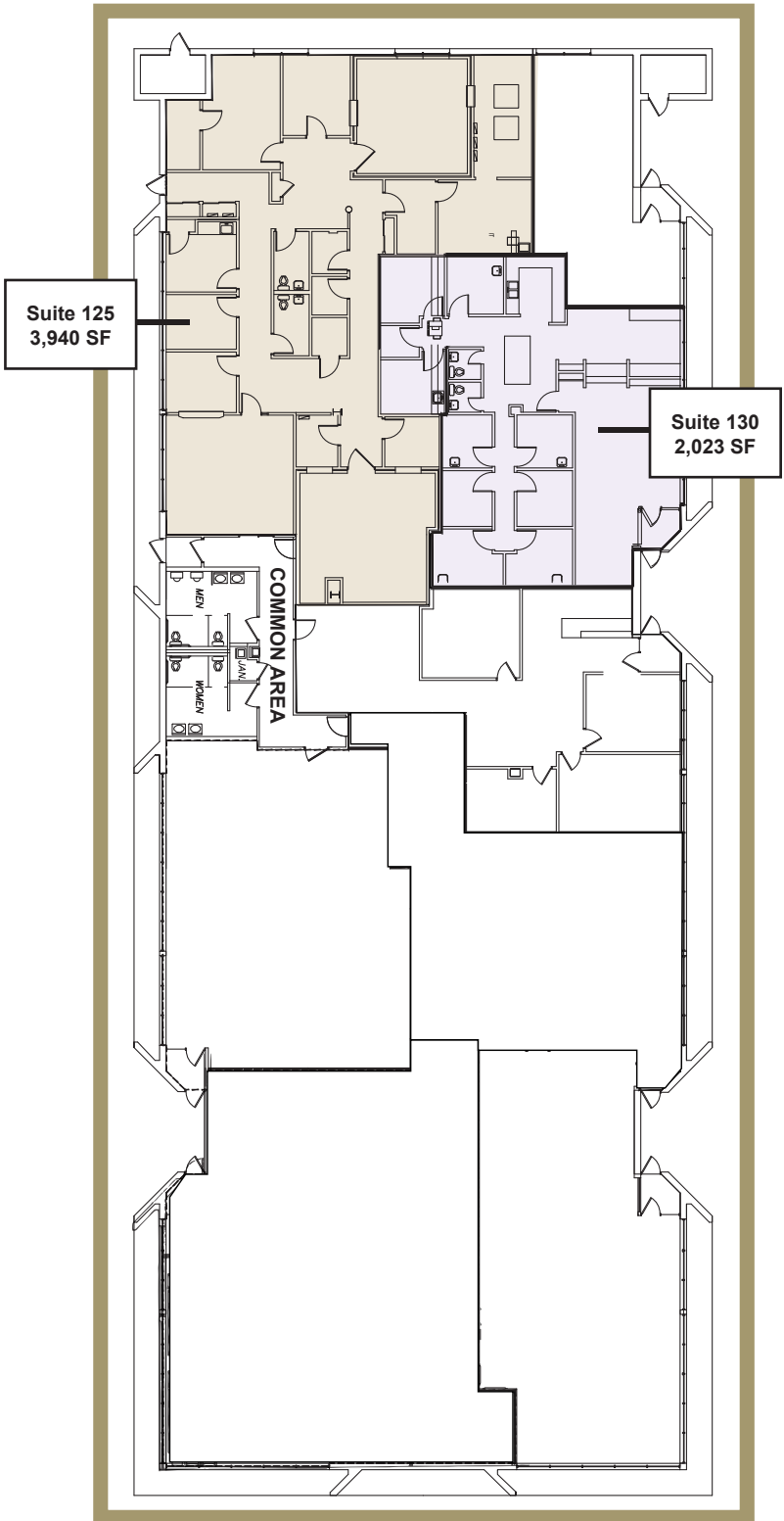
www.slosburg.com



VACANCY PHOTOS



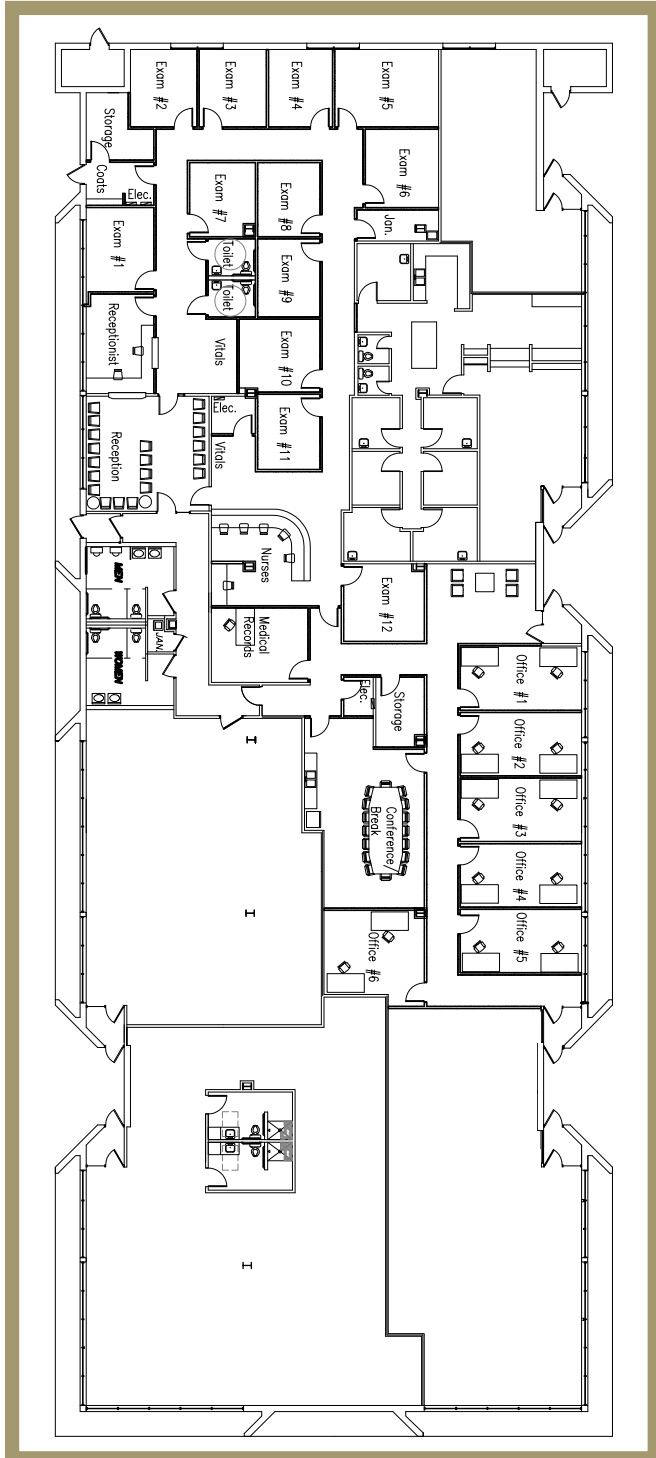
FLOOR PLAN



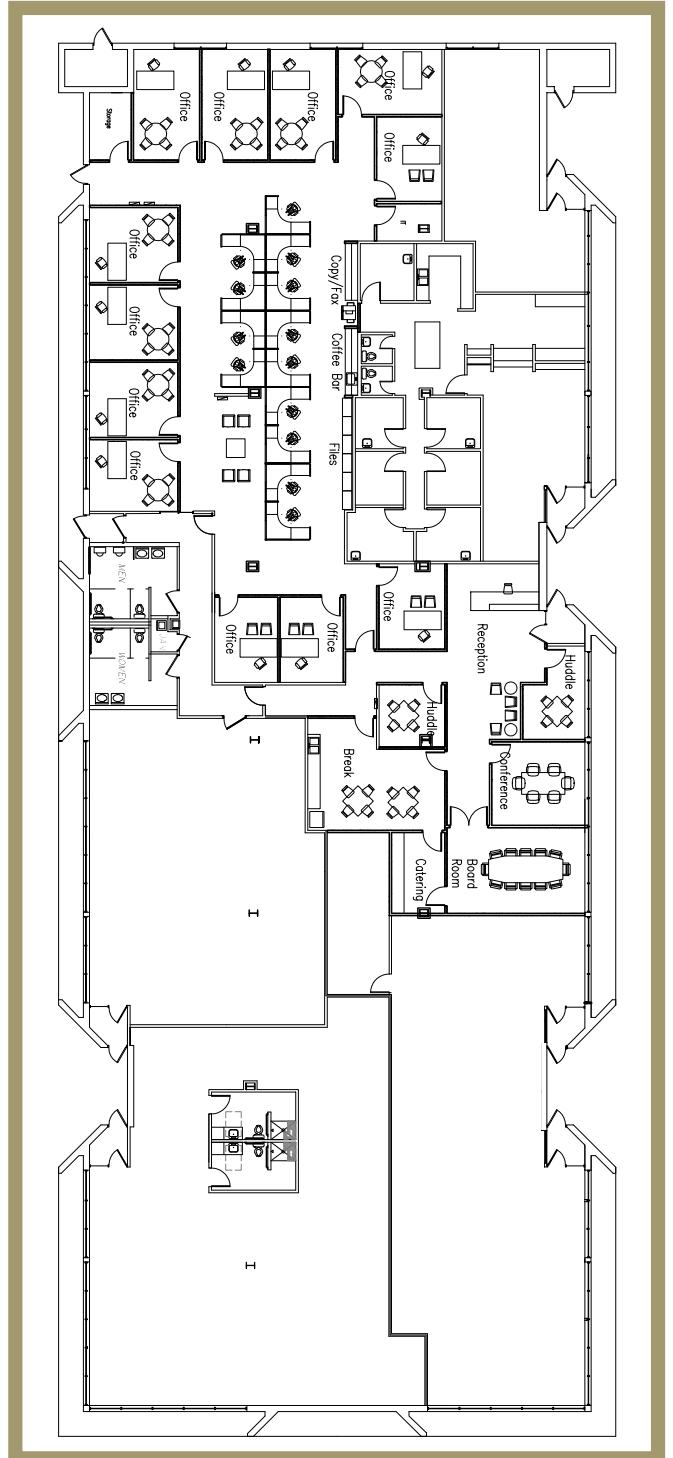


FLOOR PLAN

Conceptual Medical Use

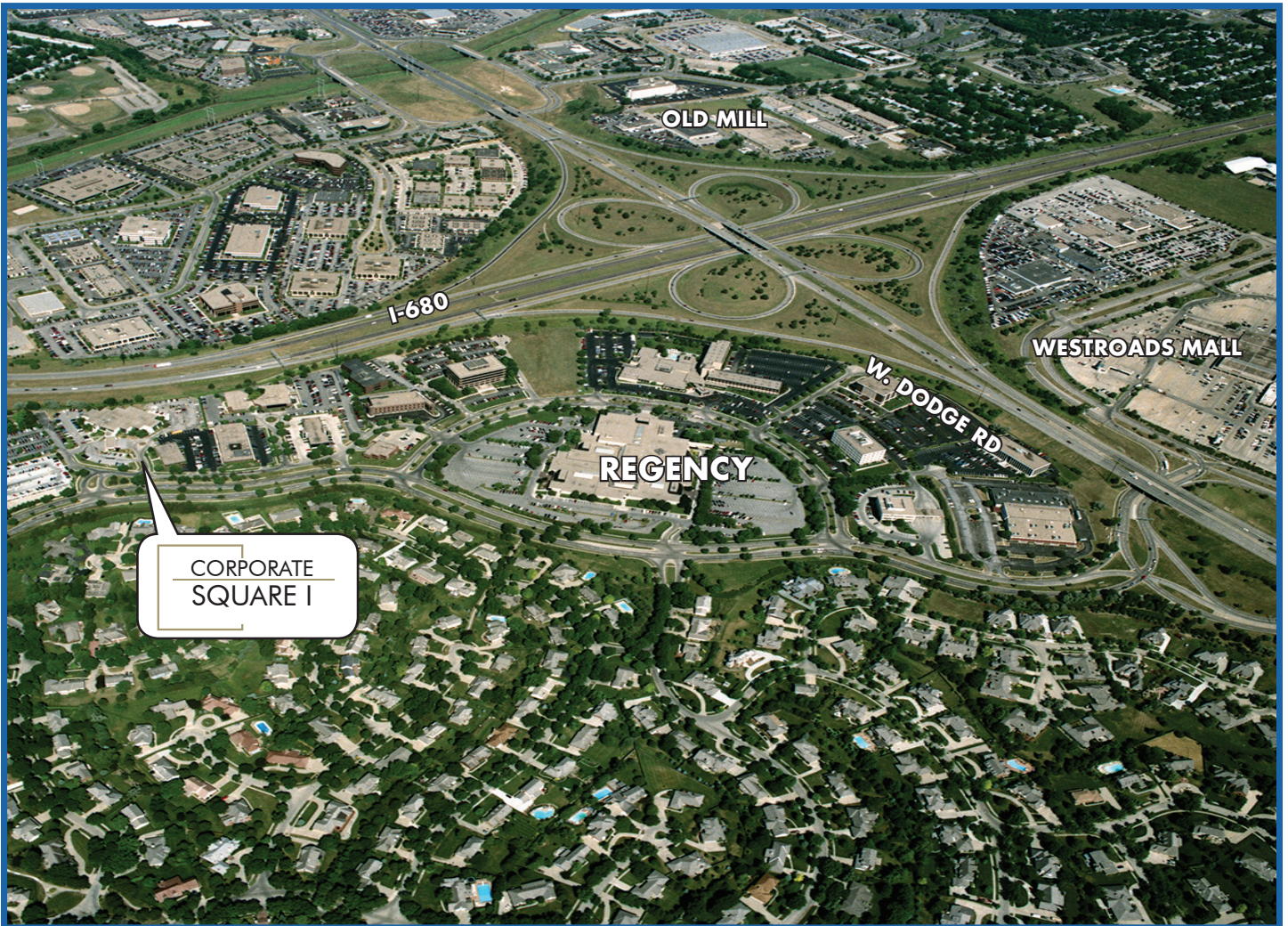


Conceptual Office Use





MAP



JOE SLOSBURG
402.390.5105
joe@slosburg.com

SLOSBURG
REAL PROPERTY®