



GROCERY ANCHORED MIXED USE RETAIL

1500 NW North Ridge Drive, Blue Springs, MO



LEASE RATE: \$25/SF NNN | 1,200 SF TO 11,371 SF SPACES

DEMOGRAPHICS

	1 mile	3 miles	5 miles
Estimated Population	9,605	50,852	91,475
Avg. Household Income	\$122,055	\$113,572	\$115,260

- New Construction mixed use development
- Major Lux and Lux Two luxury apartments
- 123 units - strong built-in customer base
- Ideal for restaurant, boutique, fitness, service tenants, and cafe
- Flexible availability divisible to most tenant needs
- High visibility to 7 Highway

 [CLICK HERE TO VIEW MORE LISTING INFORMATION](#)

For More Information Contact:

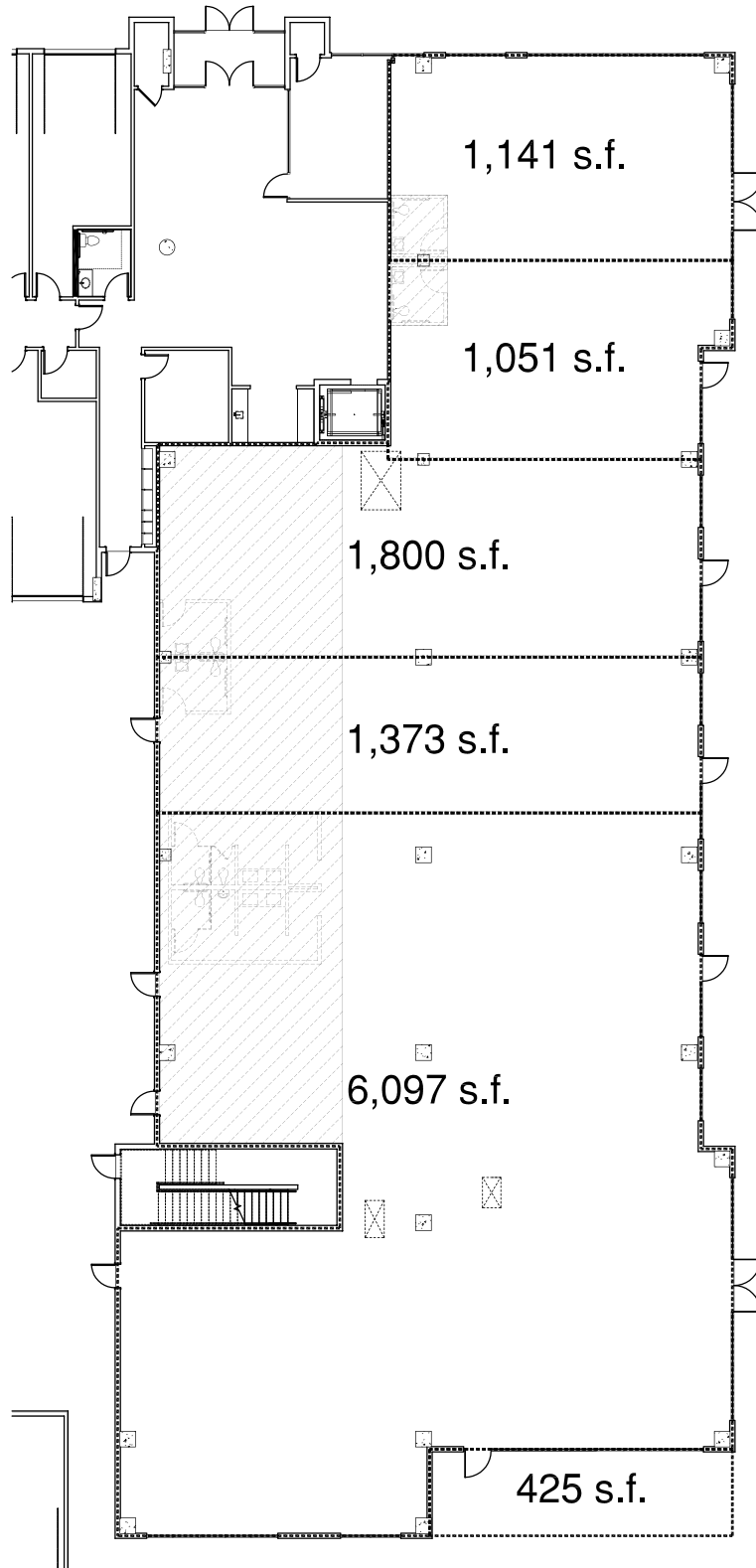
Exclusive Agent
BILL MAAS, CCIM | 816.412.7392 | bmaas@blockandco.com
DANIEL BROCATO | 816.412.7303 | dbrocato@blockandco.com



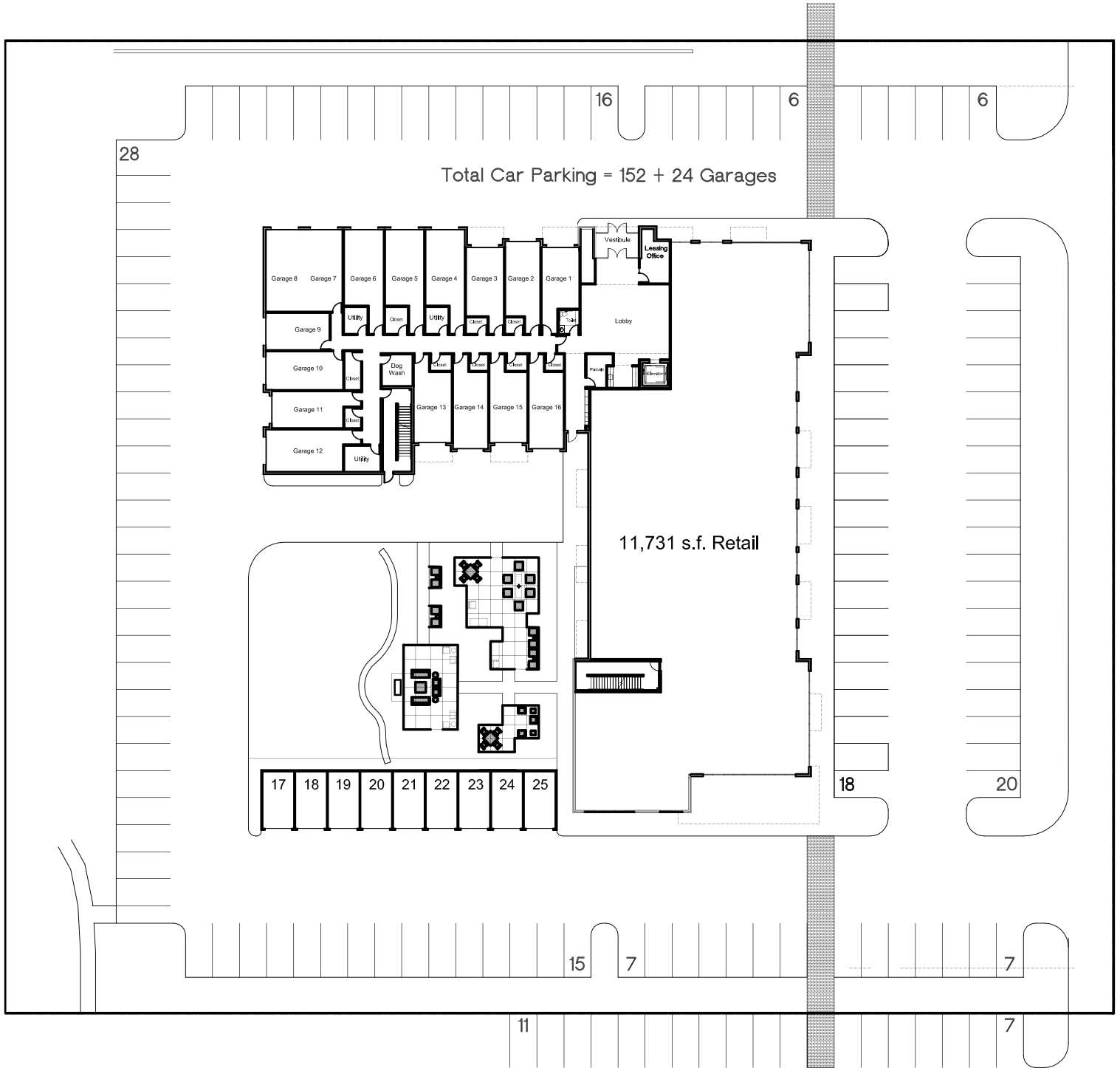
RENDERINGS



FLOOR PLAN



FLOOR PLAN



GROUND FLOOR PLAN



GROCERY ANCHORED MIXED USE RETAIL

1500 NW North Ridge Drive, Blue Springs, MO

SITE PLAN



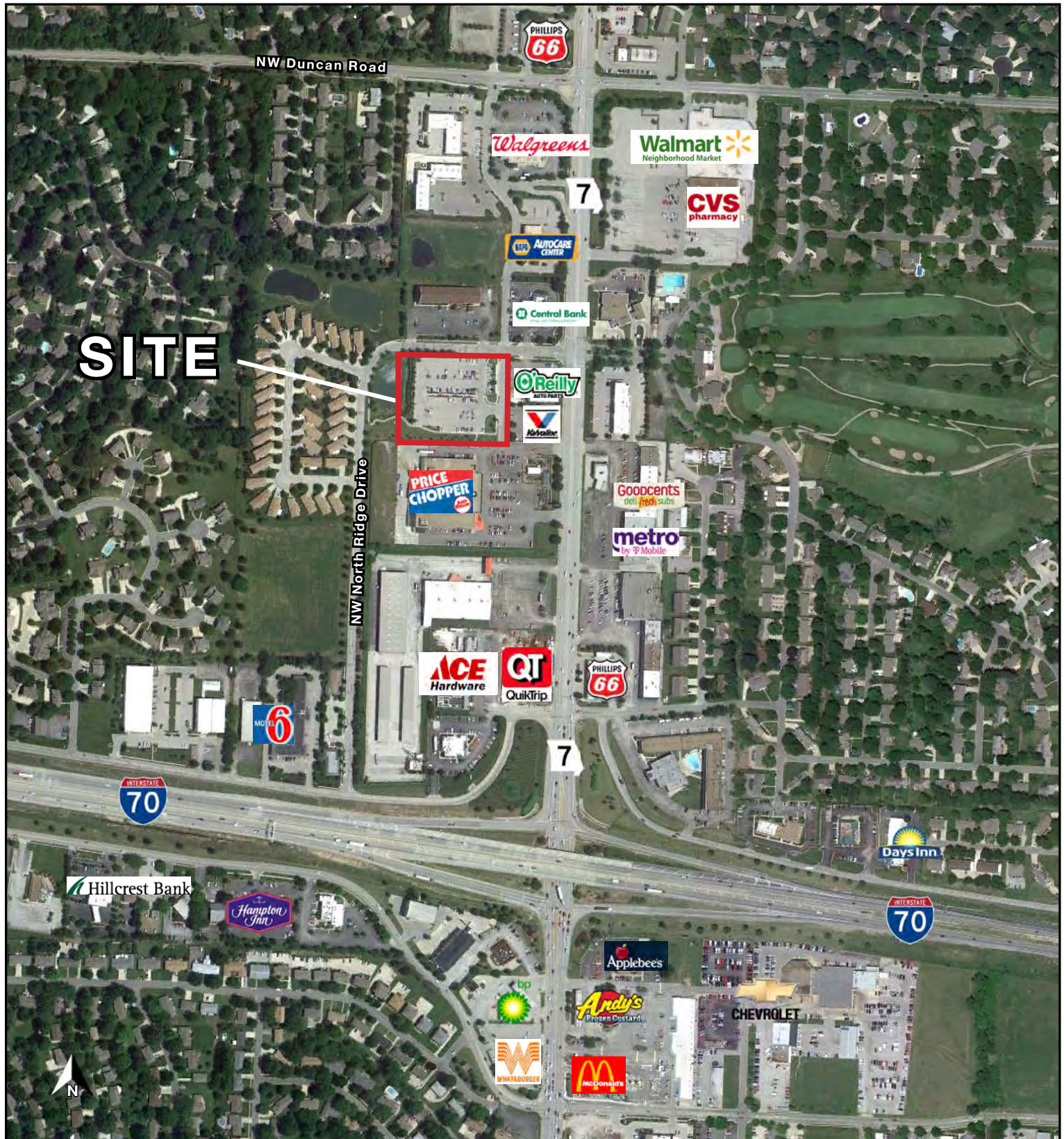
SITE PLAN
SCALE: 1" = 80'-0"



25-0912

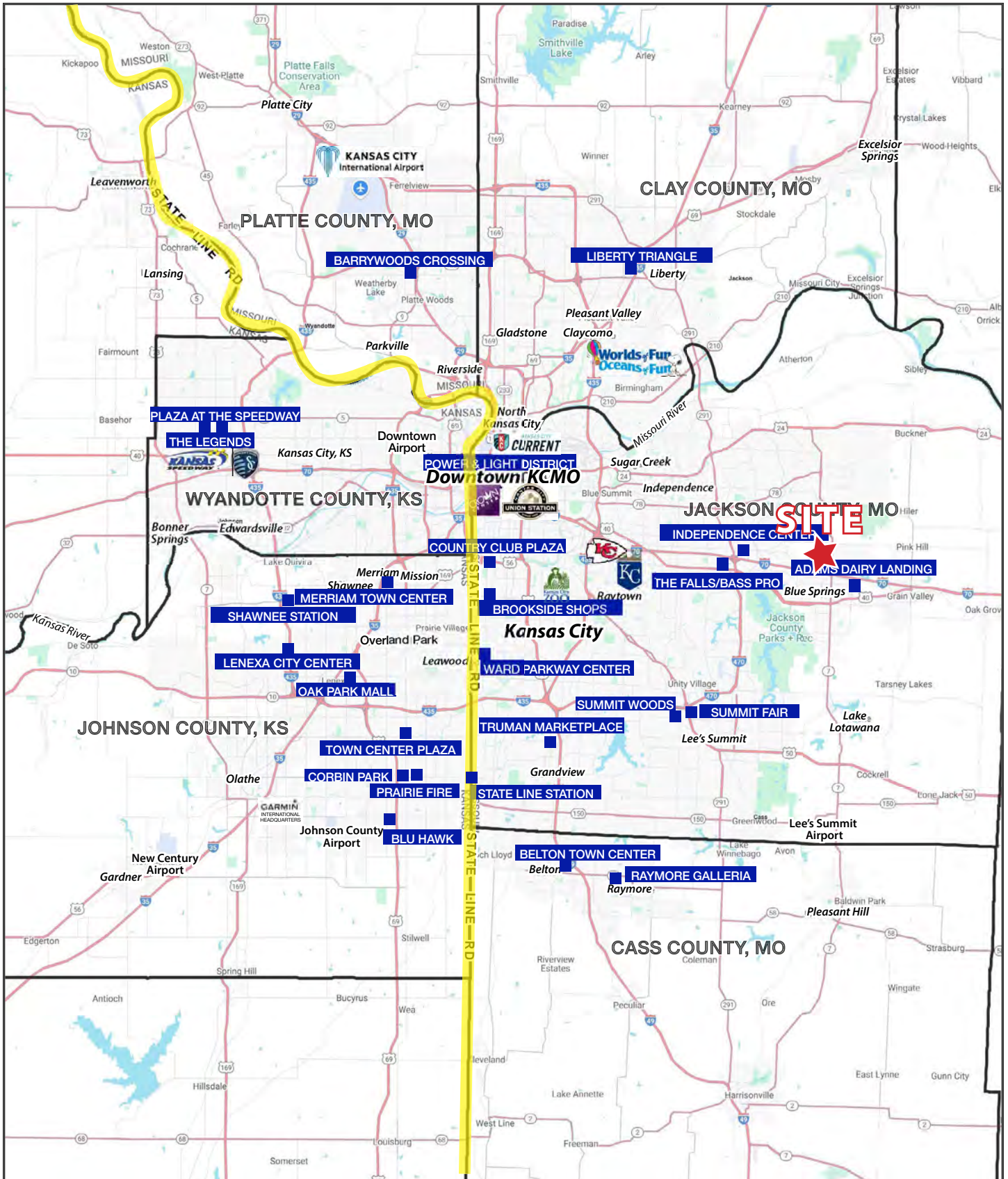


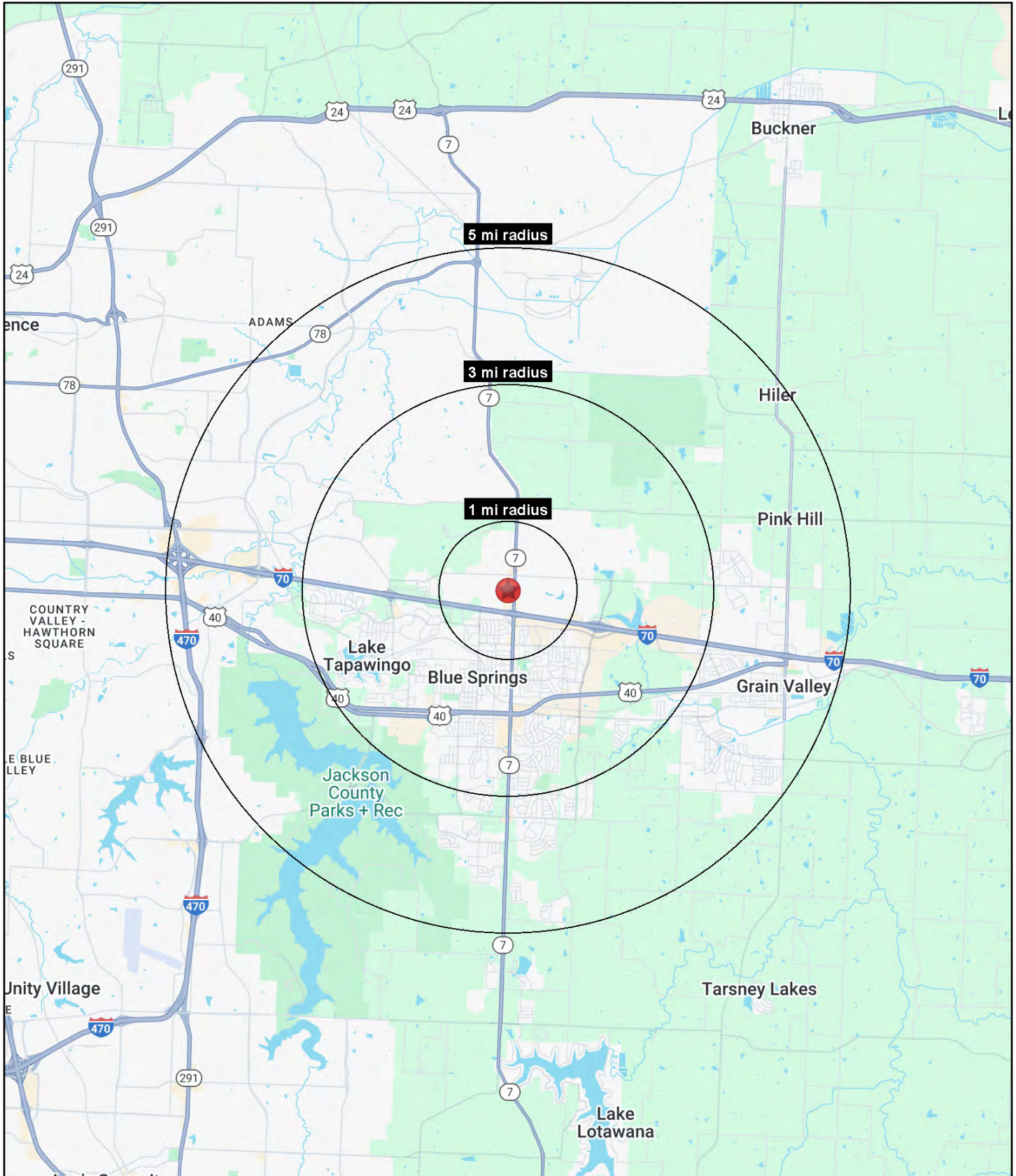
AERIAL



GROCERY ANCHORED MIXED USE RETAIL

1500 NW North Ridge Drive, Blue Springs, MO







GROCERY ANCHORED MIXED USE RETAIL

1500 NW North Ridge Drive, Blue Springs, MO

1500 NW North Ridge Drive Blue Springs, MO 64015	1 mi radius	3 mi radius	5 mi radius
Population			
2025 Estimated Population	9,605	50,852	91,475
2030 Projected Population	9,629	51,485	94,498
2020 Census Population	9,348	52,001	91,462
2010 Census Population	9,145	48,143	80,694
Projected Annual Growth 2025 to 2030	-	0.2%	0.7%
Historical Annual Growth 2010 to 2025	0.3%	0.4%	0.9%
2025 Median Age	39.4	37.5	38.0
Households			
2025 Estimated Households	3,755	19,507	35,056
2030 Projected Households	3,803	19,949	36,450
2020 Census Households	3,647	19,385	34,292
2010 Census Households	3,548	18,017	30,156
Projected Annual Growth 2025 to 2030	0.3%	0.5%	0.8%
Historical Annual Growth 2010 to 2025	0.4%	0.6%	1.1%
Race and Ethnicity			
2025 Estimated White	80.9%	80.1%	80.9%
2025 Estimated Black or African American	9.1%	9.5%	9.0%
2025 Estimated Asian or Pacific Islander	1.7%	1.6%	1.6%
2025 Estimated American Indian or Native Alaskan	0.3%	0.4%	0.4%
2025 Estimated Other Races	8.0%	8.4%	8.1%
2025 Estimated Hispanic	7.3%	7.6%	7.4%
Income			
2025 Estimated Average Household Income	\$122,055	\$113,572	\$115,260
2025 Estimated Median Household Income	\$84,378	\$85,070	\$88,768
2025 Estimated Per Capita Income	\$47,793	\$43,603	\$44,224
Education (Age 25+)			
2025 Estimated Elementary (Grade Level 0 to 8)	1.1%	1.0%	1.4%
2025 Estimated Some High School (Grade Level 9 to 11)	3.6%	3.4%	3.1%
2025 Estimated High School Graduate	25.2%	27.5%	28.8%
2025 Estimated Some College	23.6%	25.0%	23.3%
2025 Estimated Associates Degree Only	8.6%	8.1%	8.4%
2025 Estimated Bachelors Degree Only	25.1%	23.0%	22.7%
2025 Estimated Graduate Degree	12.9%	12.0%	12.2%
Business			
2025 Estimated Total Businesses	473	1,848	3,102
2025 Estimated Total Employees	3,117	13,907	29,125
2025 Estimated Employee Population per Business	6.6	7.5	9.4
2025 Estimated Residential Population per Business	20.3	27.5	29.5

©2025, Sites USA, Chandler, Arizona, 480-491-1112 Demographic Source: Applied Geographic Solutions 5/2025, TIGER Geography - RS1