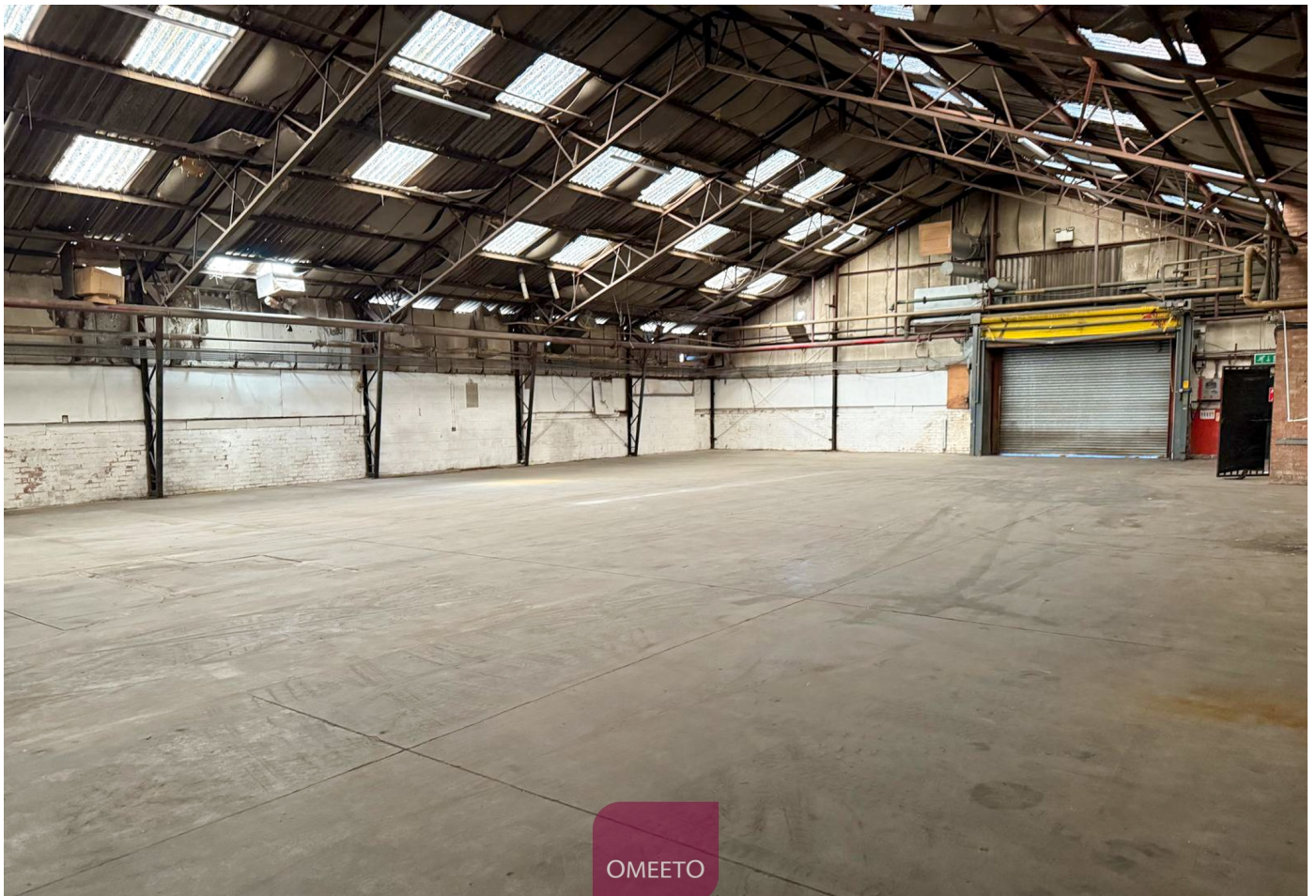


WORKSHOP, TO LET

## UNIT 24, ASHER LANE

Pentrich, Ripley, DE5 3RE



### KEY FEATURES

- Rent: £2,500 per month
- 5,237 Sq Ft (486.52 Sq M)
- Electrically operated roller shutter door
- Vehicular access & external loading bay
- 24 hour access
- Easy in, Easy out terms
- Superbly positioned for access onto A38 & A610

### OMEETO DERBYSHIRE

01332 840 328  
derbyshire@omeeto.co.uk

[omeeto.co.uk](http://omeeto.co.uk)

OMEETO

## TO LET - WORKSHOP

---

### LOCATION

Ripley is a busy market town located in the Amber Valley District of Derbyshire, c3.5 miles north east of Belper and 10 miles north of Derby. The town benefits from a variety of shops, cafes and bars.

Asher Lane is 1 miles south of Ripley town centre. The estate is superbly positioned for commuter and distribution links. The A610/A38 junction is just 2.5 miles south and J28 M1 is just 5.5 miles east.

### DESCRIPTION

Available on Easy in, easy out terms. Benefits from electrically operated roller shutter door, CCTV to all common areas and 24 hour access. The site has shared WCs. Externally there is a shared hard surface yard for loading and forecourt parking.

### ACCOMMODATION

The accommodation has been measured on a Gross Internal Area basis (GIA) in accordance with the RICS Code of Measuring practice.

FLOOR	Sq Ft	Sq M
<b>TOTAL</b>	<b>5,237</b>	<b>486.52</b>

### PLANNING

We believe the property has been used under Class E (Commercial, Business and Service) and B8 (Storage and Distribution) of the Town and Country Planning (Use Classes) Order 1987 (as amended). All parties should confirm the planning position with the relevant Local Authority.

### SERVICES

It is understood all mains services excluding gas are connected to the property, including 3-Phase Electric on a sub meter which will be recharged to the tenant based on usage. Tenants are responsible for payment of any business rates (if applicable).

The agents give no guarantee in respect of connectivity or capacity and interested parties must rely on their own investigations.

### RATING

The property is currently listed as a warehouse and premises on VOA.gov.uk.

**Rateable Value:** £19,500

**Rates Payable:** £9,730.50

### SERVICE CHARGE

Is payable for the running, maintenance and up keep of the building structure, common, shared and external areas.

The current service charge budget is £0.30 per Sq Ft.

### TENURE

Unit to let by way of a a standard estate licence for initial 1 year term, renewable annually. A longer term lease may be available subject to convent and terms.

### RENT

The premises is available to rent for £2,500 per month.

### VAT

All figures are quoted exclusive of VAT, we are advised the property is registered for VAT.

### EPC

B (46)

### VIEWING

Please contact us or visit the OMEETO website for full details and a virtual tour. Physical viewings with proceedable parties can be arranged on request by contacting our commercial property agents. OMEETO do not take any responsibility for any loss or injury caused whilst carrying out a site visit.

---

## OMEETO DERBYSHIRE

01332 840 328

derbyshire@omeeto.co.uk

[omeeto.co.uk](http://omeeto.co.uk)



OMEETO

## TO LET - WORKSHOP

---

### ANTI-MONEY LAUNDERING

Any offer accepted is subject to completing AML checks.

### PAPER COPYING LICENCE

100062569

### PARTICULARS UPDATED

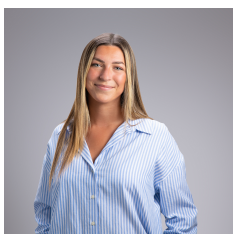
22-Feb-2026

### NOTE

Plans, maps drawings are not to scale.

### OMEETO

Please check our website for a suite of photos, video's and virtual tour. Users can also access our data room for various property documents.



### CONTACT

**Ruby Scott-Mullen**

01332840328

07398390967

rubysm@omeeto.co.uk

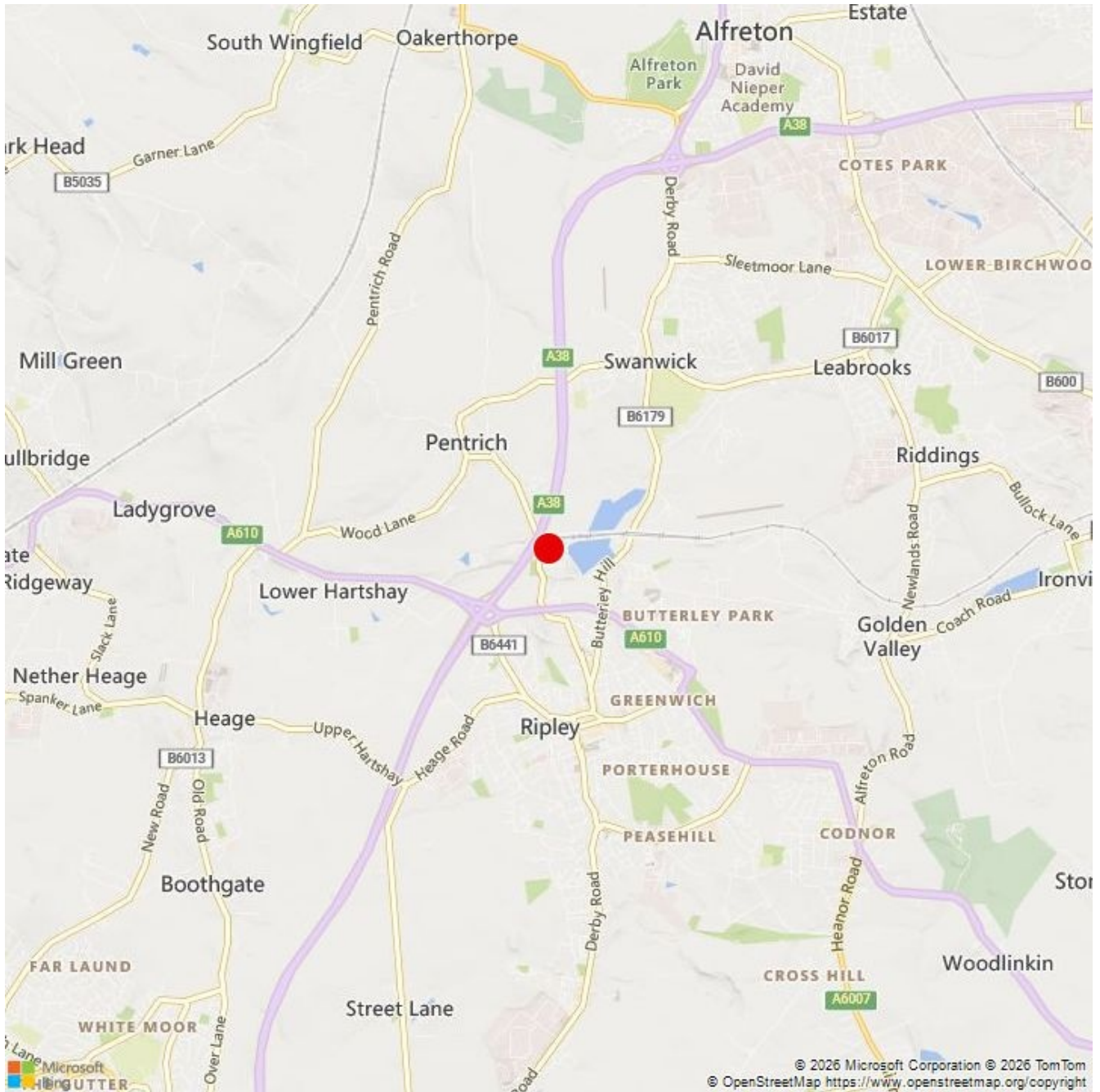
### IMPORTANT NOTICE

1) Omeeto are not authorised to make or give any representations or warranties in relation to the property either here or elsewhere, either on their own behalf or on behalf of their client or otherwise. They assume no responsibility for any statement that may be made by word of mouth or in writing.  
2) These particulars do not form part of any offer or contract and "information" must not be relied upon as statements, representations or facts.

3) All measurements, areas and distances are approximate and for guidance. All descriptions, conditions, permission for use and occupations should not be relied upon and it should not be assumed that the property has all necessary planning, building regulation or other consents. Services, equipment and facilities etc have not been tested. Any interested party must satisfy themselves on these matters by inspection, independent advice or otherwise.  
4) Photos, video's, virtual tours etc show only certain parts of the property as they appeared at the time of inspection.

The OMEETO logo, consisting of the word "OMEETO" in white, uppercase letters on a dark purple background with rounded corners.

## TO LET - WORKSHOP



### OMEETO DERBYSHIRE

01332 840 328  
derbyshire@omeeto.co.uk

omeeto.co.uk

