



**FOR LEASE**

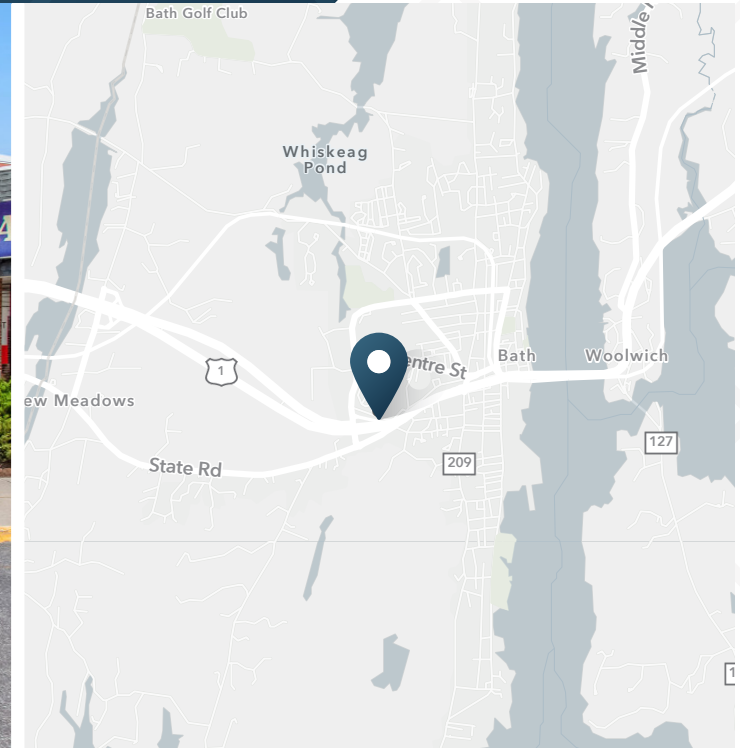
# Bath Shopping Center

5 Chandler Drive | Bath, ME



# Bath Shopping Center

5 Chandler Drive | Bath, ME



2,000 - 11,875 SF  
Available

Contact Broker  
Rate

Owned & Managed By:



## ABOUT THE PROPERTY

- Shaw's anchored shopping center located on US Rte 1 with 34,000 VPD.
- This 101,124± SF shopping center is easily accessible and is a popular destination for both the local population and tourists.
- Major Tenants Include Shaws and Rent-A-Center.
- 398 parking spaces
- Pylon signage available.

## NEARBY RETAILERS



## TRAFFIC COUNTS

Route 1	34,000 VPD
Leeman Highway	12,914 VPD
Congress Ave	8,141 VPD

Year: 2020 | Source: Esri

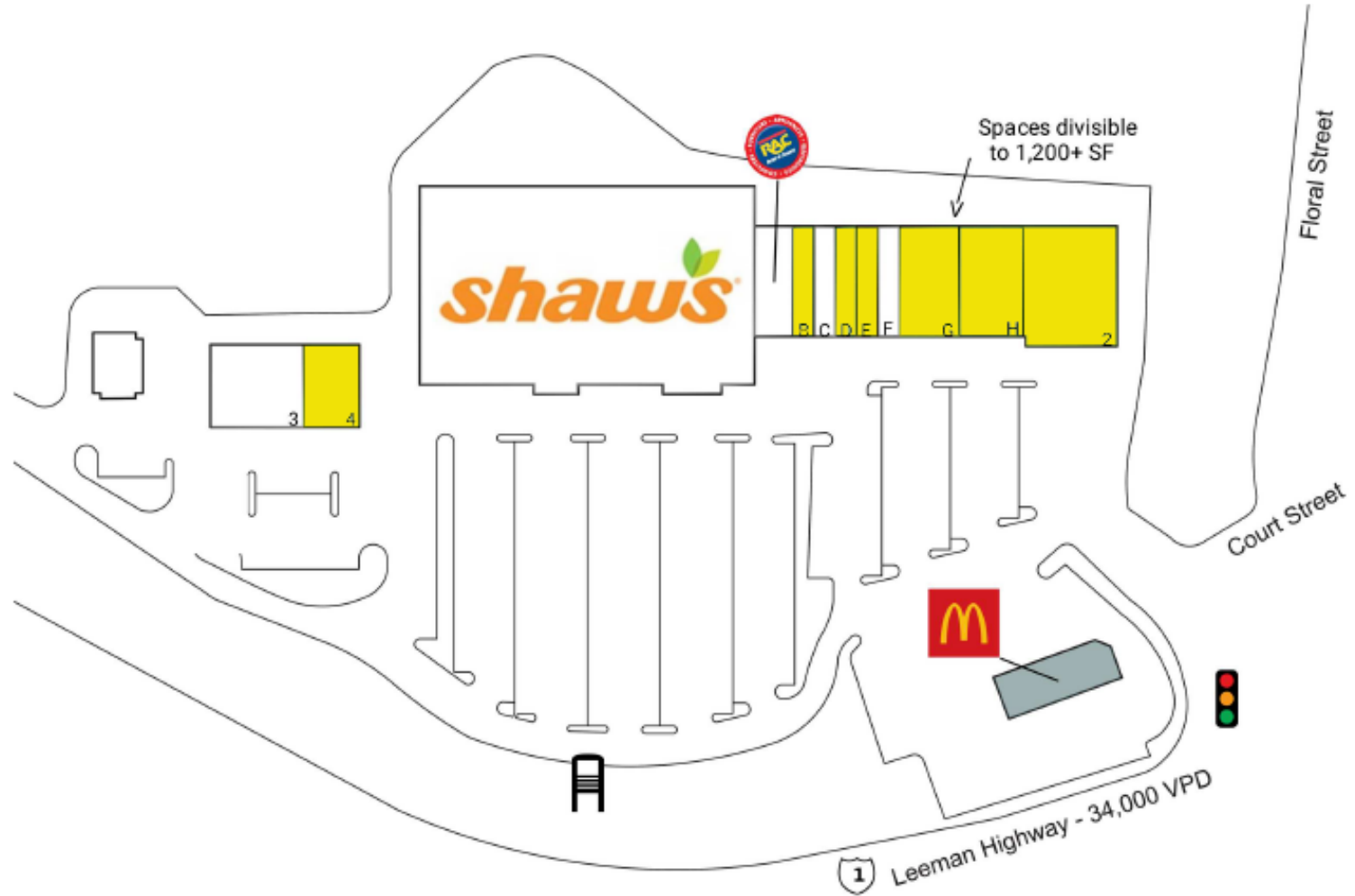
# Bath Shopping Center

5 Chandler Drive | Bath, ME



## TENANTS / AVAILABILITY

#	Tenant	Sq. Ft.
A	Rent-A-Center	3,500 SF
B	AVAILABLE	2,000 SF
C	Empire Nails & Spa	2,000 SF
D	AVAILABLE	2,000 SF
E	AVAILABLE	2,000 SF
F	Revolution Hair Studio	1,134 SF
G	AVAILABLE	5,875 SF
H	AVAILABLE	6,000 SF
1	Shaw's Supermarket	57,447 SF
2	AVAILABLE	9,350 SF
3	Cross Insurance	5,993 SF
4	AVAILABLE	3,825 SF

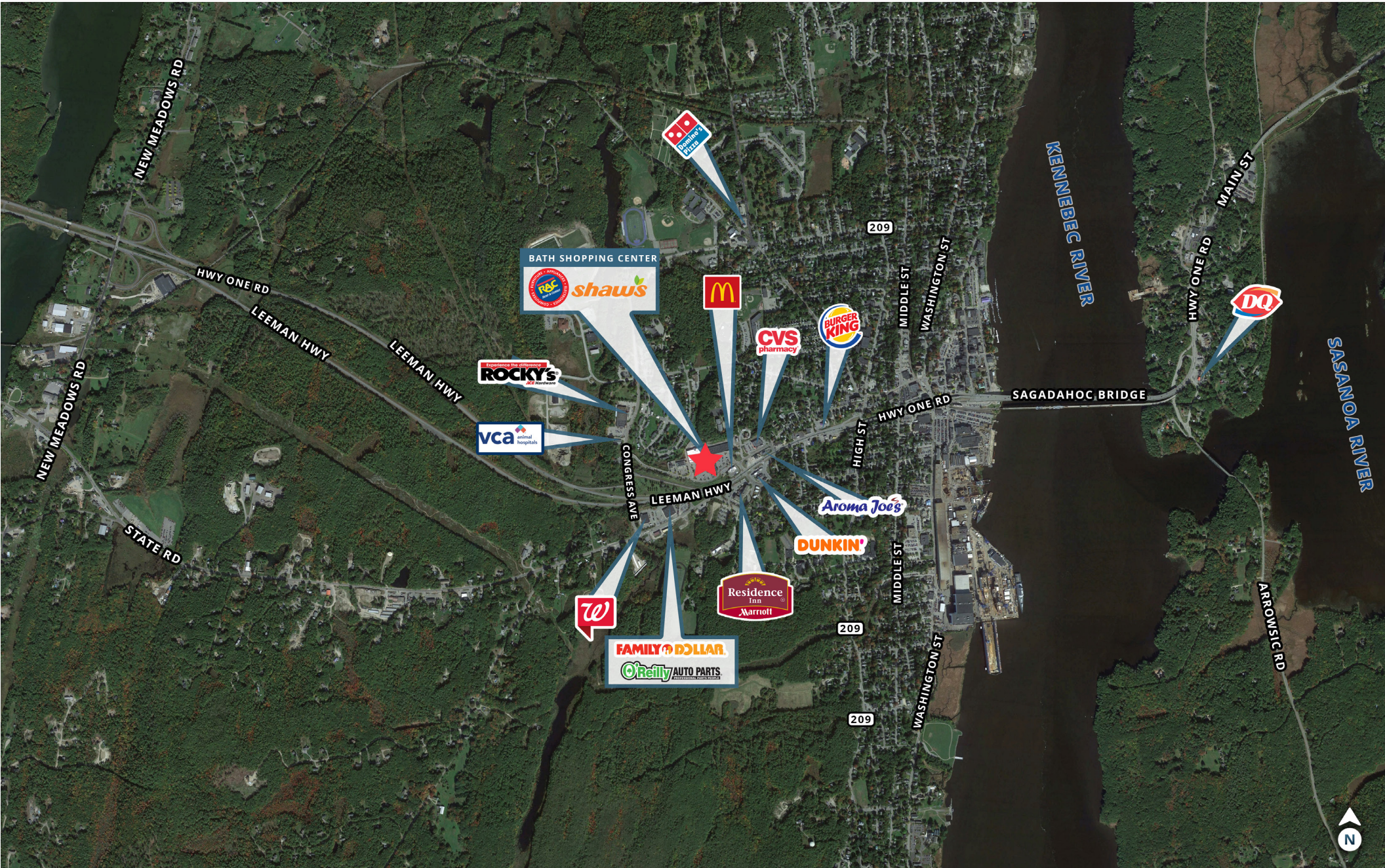


# Bath Shopping Center

5 Chandler Drive | Bath, ME



Bath  
Maine



# Bath Shopping Center

5 Chandler Drive | Bath, ME



## DEMOGRAPHIC HIGHLIGHTS

### Population

	3 miles	5 miles	7 miles
2022 Estimated Population	11,177	18,665	34,998
2027 Projected Population	11,351	19,062	35,513
Projected Annual Growth Rate 2022 to 2027	0.31%	0.42%	0.29%

### Daytime Population

	3 miles	5 miles	7 miles
2022 Daytime Population	15,170	26,496	42,800
Workers	9,570	17,165	25,352
Residents	5,600	9,331	17,448

### Income

	3 miles	5 miles	7 miles
2022 Est. Average Household Income	\$78,713	\$85,990	\$93,717
2022 Est. Median Household Income	\$58,664	\$64,646	\$70,610

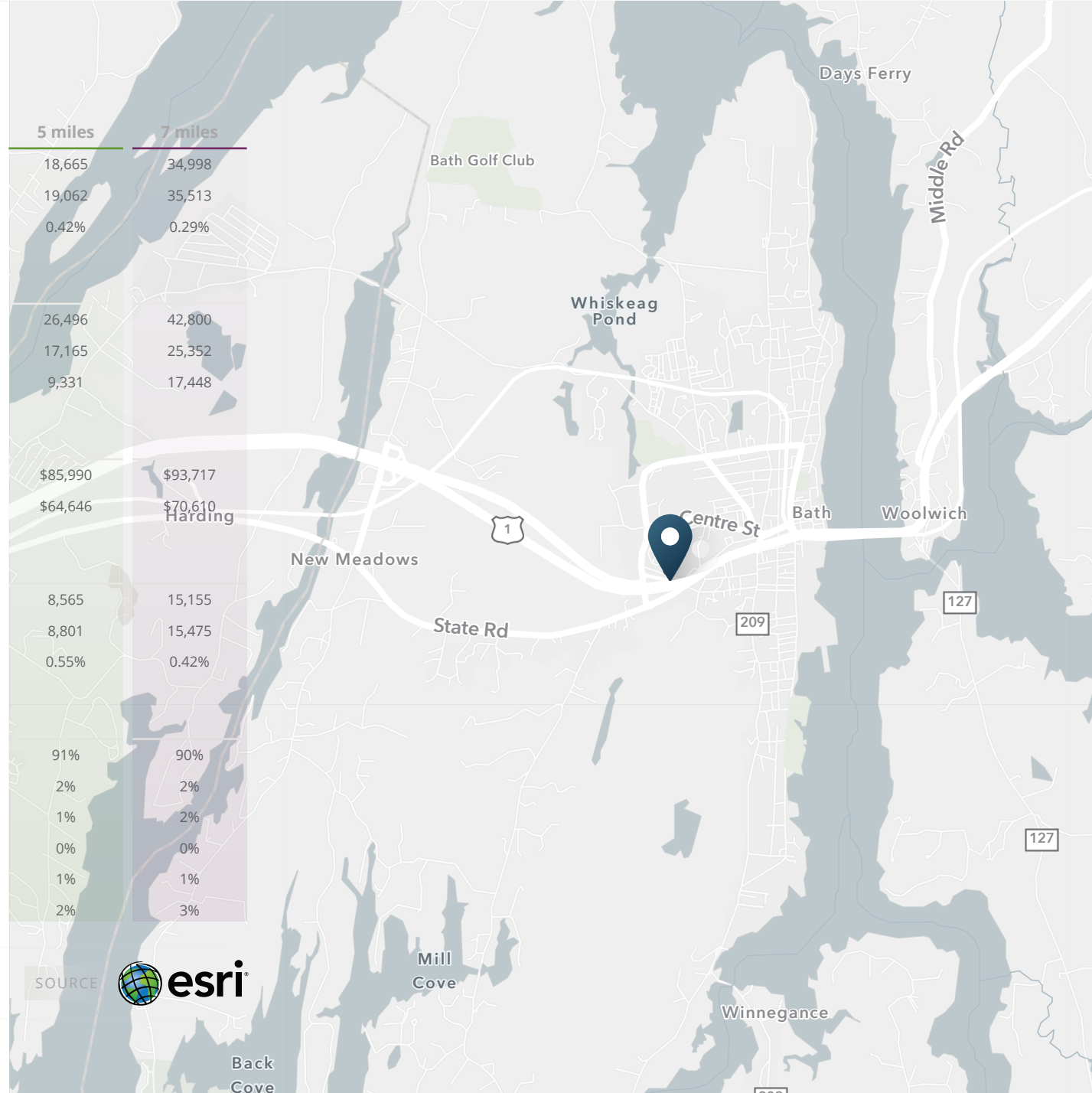
### Households & Growth

	3 miles	5 miles	7 miles
2022 Estimated Households	5,287	8,565	15,155
2027 Estimated Households	5,405	8,801	15,475
Projected Annual Growth Rate 2022 to 2027	0.44%	0.55%	0.42%

### Race & Ethnicity

	3 miles	5 miles	7 miles
2022 Est. White	91%	91%	90%
2022 Est. Black or African American	2%	2%	2%
2022 Est. Asian or Pacific Islander	1%	1%	2%
2022 Est. American Indian or Native Alaskan	0%	0%	0%
2022 Est. Other Races	1%	1%	1%
2022 Est. Hispanic	2%	2%	3%

> **Want more?** Contact us for a complete demographic, foot-traffic, and mobile data insights report.





**SRS Real Estate Partners**  
400 Fifth Avenue, Suite 105  
Waltham, MA 02451  
857.263.3839

**BRYAN WRIGHT**  
617.245.0671  
Bryan.Wright@srsre.com

**CHRIS JANELLE**  
617.872.1115  
Chris.Janelle@srsre.com

**JONATHAN LAPAT**  
BROKER OF RECORD

**SRSRE.COM**

© SRS Real Estate Partners

The information presented was obtained from sources deemed reliable;  
however SRS Real Estate Partners does not guarantee its completeness or accuracy.