

EXPRESSWAY COURT COMMERCE CENTRE

Virginia Beach, VA 23462

OFFICE / WAREHOUSE FOR LEASE



THALHIMER

BRETT SAIN, SIOR

First Vice President

757 213 4153

brett.sain@thalhimer.com

The Town Center of Virginia Beach

222 Central Park Avenue, Suite 1500

Virginia Beach, VA 23462

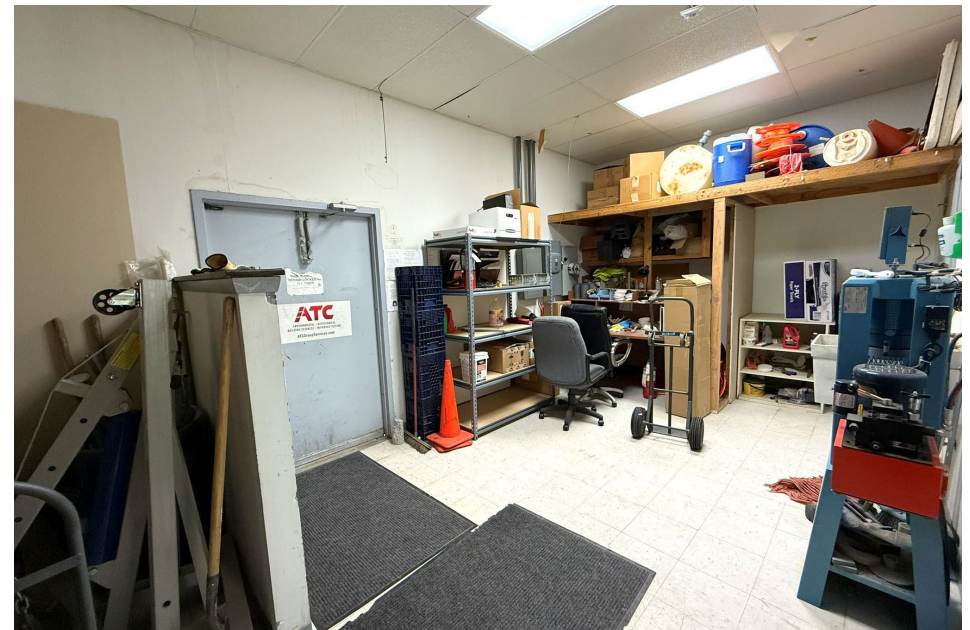
757 499 2900 | thalhimer.com

CENTRALLY LOCATED WITH
CONVENIENT ACCESS TO I-264

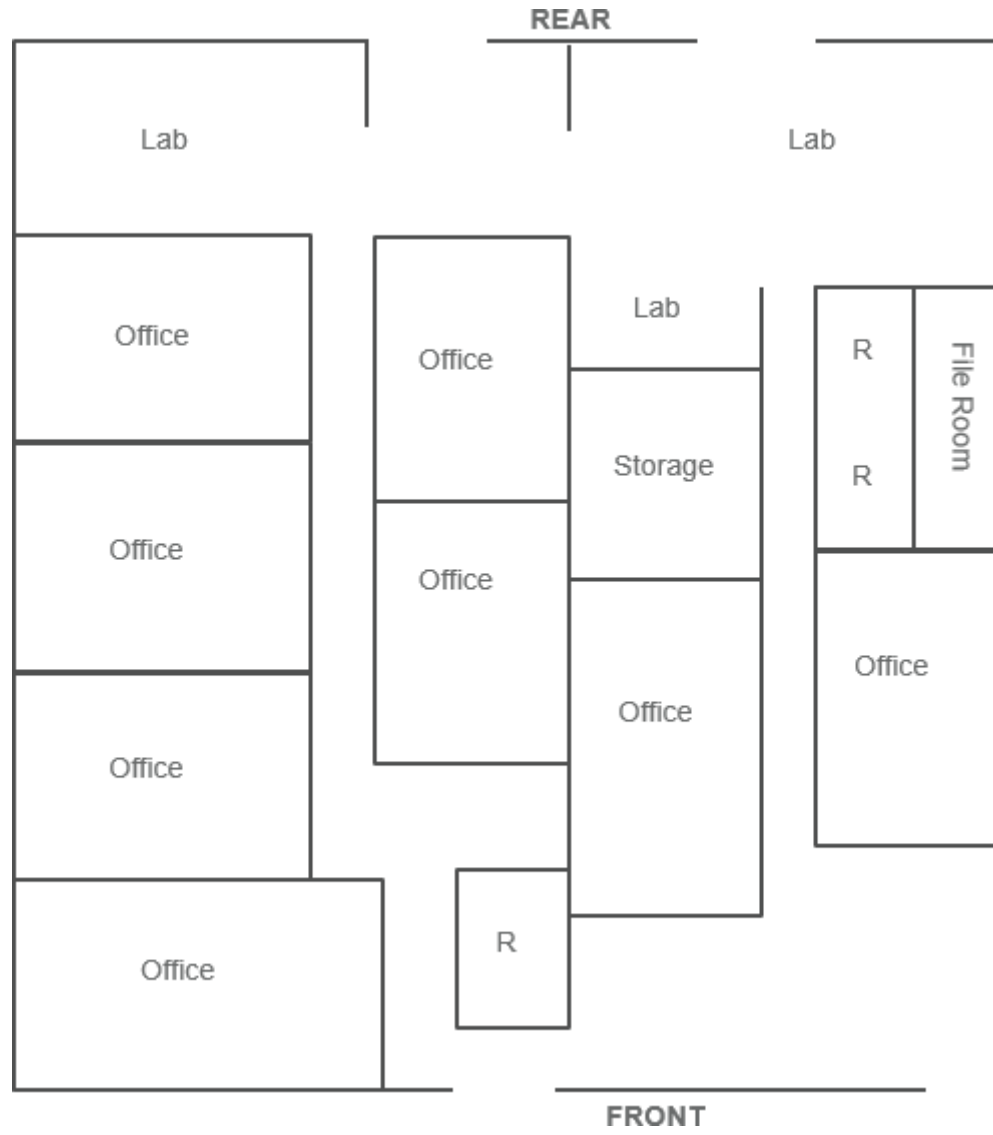
211 EXPRESSWAY DETAILS

SPECIFICATIONS

| | |
|---------------------------|--|
| Available | ±2,500 SF • 100% office |
| Construction | Wood Frame |
| Year Built | 1984 |
| Zoning | I-1, Light Industrial |
| Electrical Systems | 3-Phase Power |
| Clear Height | 10' |
| Loading | Ability to add an 8' x 8' grade-level door |
| Lease Rate | \$13.00 PSF, NNN |
| OPEX | \$2.50 PSF |



211 EXPRESSWAY FLOOR PLAN



212 EXPRESSWAY DETAILS

SPECIFICATIONS

Available ±1,400 SF
• 50/50 office / warehouse
• Fully conditioned

Construction Wood Frame

Year Built 1984

Zoning I-1, Light Industrial

Electrical Systems 3-Phase Power

Clear Height 10'

Loading One (1) grade-level door

Lease Rate \$13.50 PSF, NNN

OPEX \$2.50 PSF



259 EXPRESSWAY DETAILS

SPECIFICATIONS

| | |
|---------------------------|--------------------------------|
| Available | ±1,360 SF • Majority office |
| Construction | Wood Frame |
| Year Built | 1984 |
| Zoning | I-1, Light Industrial |
| Electrical Systems | 3-Phase Power |
| Clear Height | 10' |
| Loading | One (1) roll up door |
| Lease Rate | \$13.00 PSF, NNN |
| OPEX | \$2.50 PSF |





BRETT SAIN, SIOR
First Vice President
757 213 4153
brett.sain@thalhimer.com

The Town Center of Virginia Beach
222 Central Park Avenue, Suite 1500
Virginia Beach, VA 23462
757 499 2900 | thalhimer.com