



±38,500 SF

AVAILABLE

## 9725 Industrial Drive

Bridgeview, Illinois 60455

### PROPERTY HIGHLIGHTS

- ±38,500 SF available
- ±4,000 SF office
- ±2.1 acres
- 20' clear height
- 1 truck dock
- 2 drive-in doors
- 800 amps @ 480 volts
- 80 auto parking spots
- I-2 zoning
- I-294 frontage
- Real Estate Taxes: \$1.65 psf (2024 pay 2025)
- Sale Price: \$6,400,000
- Lease Price: Subject To Offer



### Contact

Kelly Disser

+1 630 317 0721

kdisser@hiffman.com

Michael J Freitag

+1 630 693 0652

mf Freitag@hiffman.com

TJ Feeny

+1 630 693 0680

tfeeny@hiffman.com

Michael Guaghan

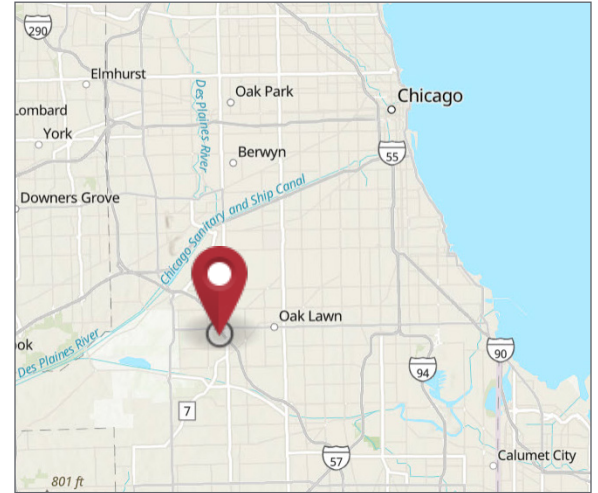
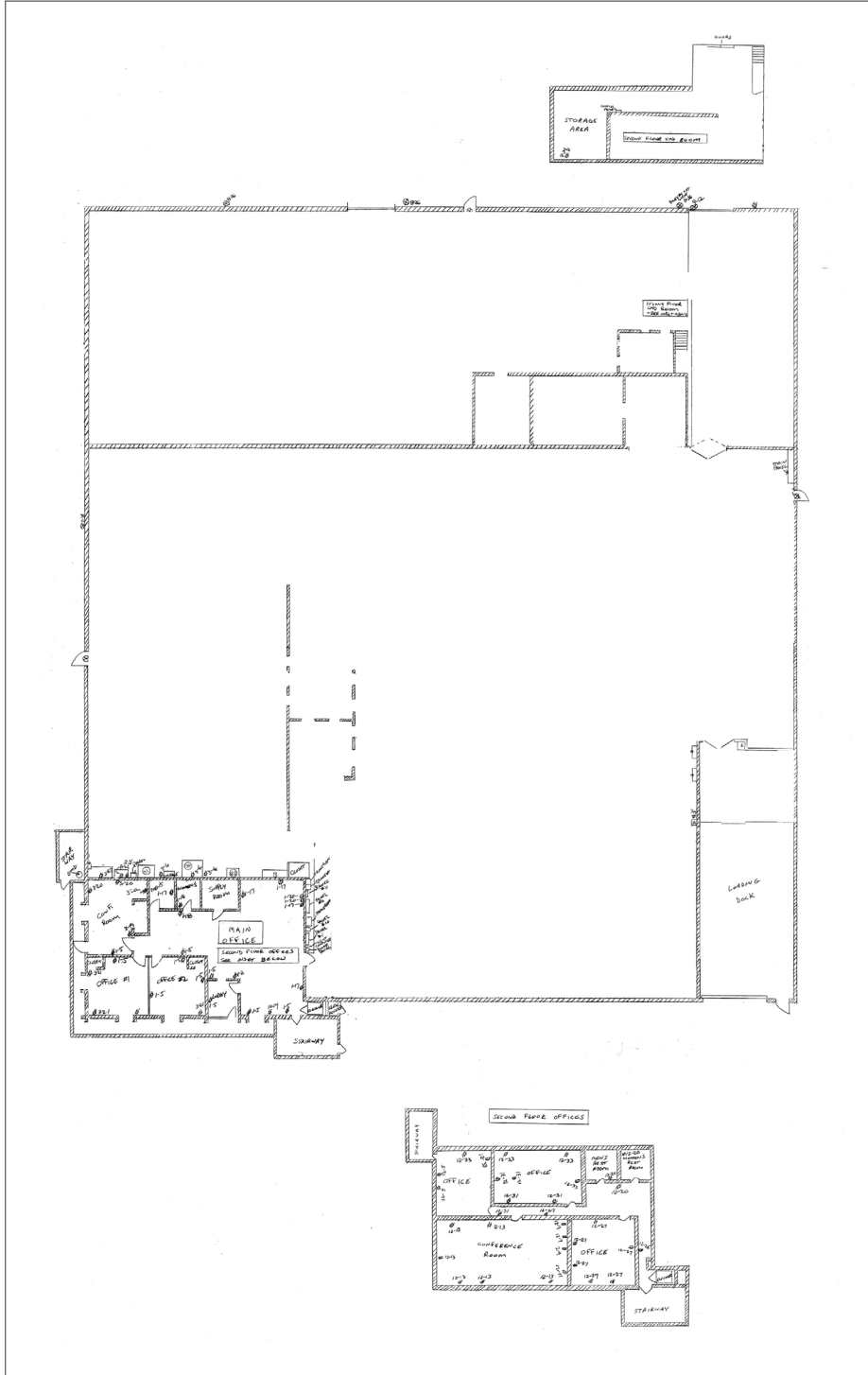
+1 630 359 7878

mgaughan@hiffman.com

STONEMONT

9725 INDUSTRIAL DRIVE | BRIDGEVIEW ILLINOIS  
AVAILABLE

**±38,500 SF**  
Warehouse / Distribution Space



### Contact

Kelly Dissler  
+1 630 317 0721

[kdissler@hiffman.com](mailto:kdissler@hiffman.com)

Michael J Freitag

+1 630 693 0652

[mfreitag@hiffman.com](mailto:mfreitag@hiffman.com)

TJ Feeney

+1 630 693 0680

[tfeeney@hiffman.com](mailto:tfeeney@hiffman.com)

Michael Guaghan

+1 630 359 7878

[mgaughan@hiffman.com](mailto:mgaughan@hiffman.com)

STONEMONT



One Oakbrook Terrace, Suite 400  
Oakbrook Terrace IL 60181  
630 932 1234

NO WARRANTY OR REPRESENTATION, EXPRESS OR IMPLIED, IS MADE AS TO THE ACCURACY OF THE INFORMATION CONTAINED HEREIN, AND THE SAME IS SUBMITTED SUBJECT TO ERRORS, OMISSIONS, CHANGE OF PRICE, RENTAL OR OTHER CONDITIONS, PRIOR SALE, LEASE OR FINANCING, OR WITHDRAWAL WITHOUT NOTICE, AND OF ANY SPECIAL LISTING CONDITIONS IMPOSED BY OUR PRINCIPALS NO WARRANTIES OR REPRESENTATIONS ARE MADE AS TO THE CONDITION OF THE PROPERTY OR ANY HAZARDS CONTAINED THEREIN ARE ANY TO BE IMPLIED.

[hiffman.com](http://hiffman.com)