

3302 WESTFIELD RD (SR32) NOBLESVILLE, IN 46062

DEMOGRAPHICS

POPULATION

2010

2 MILES: 11,804

5 MILES: 91,863

10 MILES: 297,717

2022

2 MILES: 18,781

5 MILES: 122,130

10 MILES: 366,014

2027 (Projection)

2 MILES: 21,789

5 MILES: 139,475

10 MILES: 412,403

INCOME

Average Household

2 MILES: \$127,972

5 MILES: \$126,837

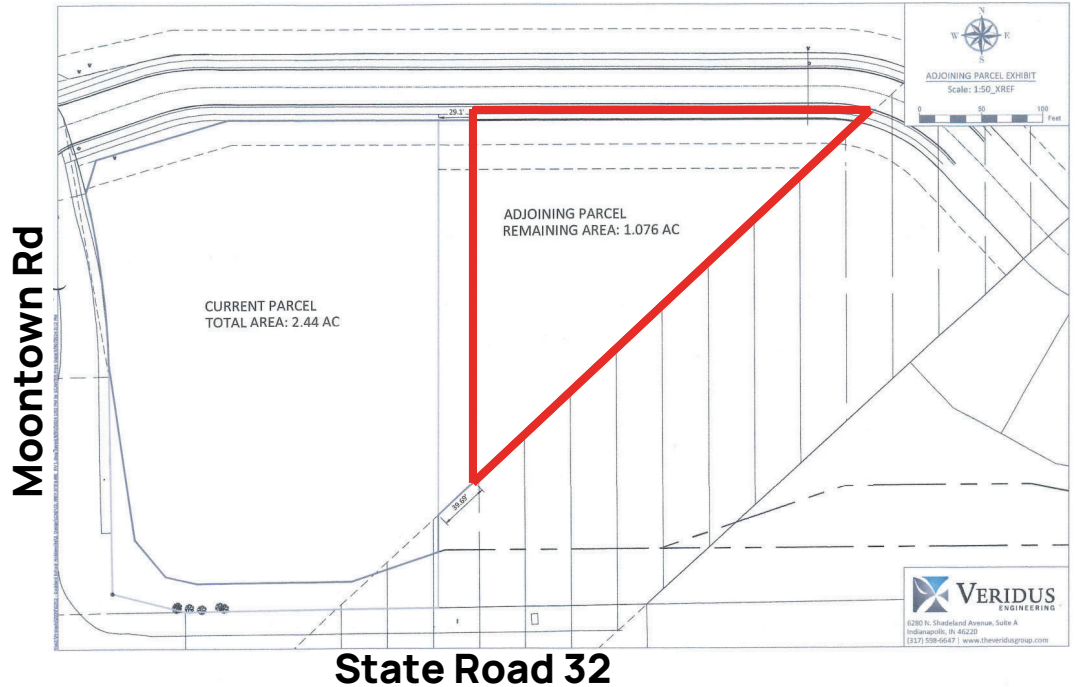
10 MILES: \$123,888

Median Household

2 MILES: \$101,217

5 MILES: \$102,374

10 MILES: \$98,038



PROPERTY DESCRIPTION

- Potential for Office or Medical Uses
- Frontage on SR 32
- East of Moontown Rd and SR 32



Tim O'Connor

REALTOR® | 317.590.3785

toconnor@bhhsin.com



THE O'CONNOR TEAM
TRUSTED REAL ESTATE EXPERTS