



WEWORK AT

# Station Square

BURNABY, BC

---

**wework**

© 2020 WeWork

# Station Square at a glance

3

TOTAL BUILDING FLOORS

78,000

TOTAL BUILDING SQ FT

2

WEWORK FLOORS + FULL FLOOR OPPORTUNITIES

58,819

TOTAL WEWORK SQ FT



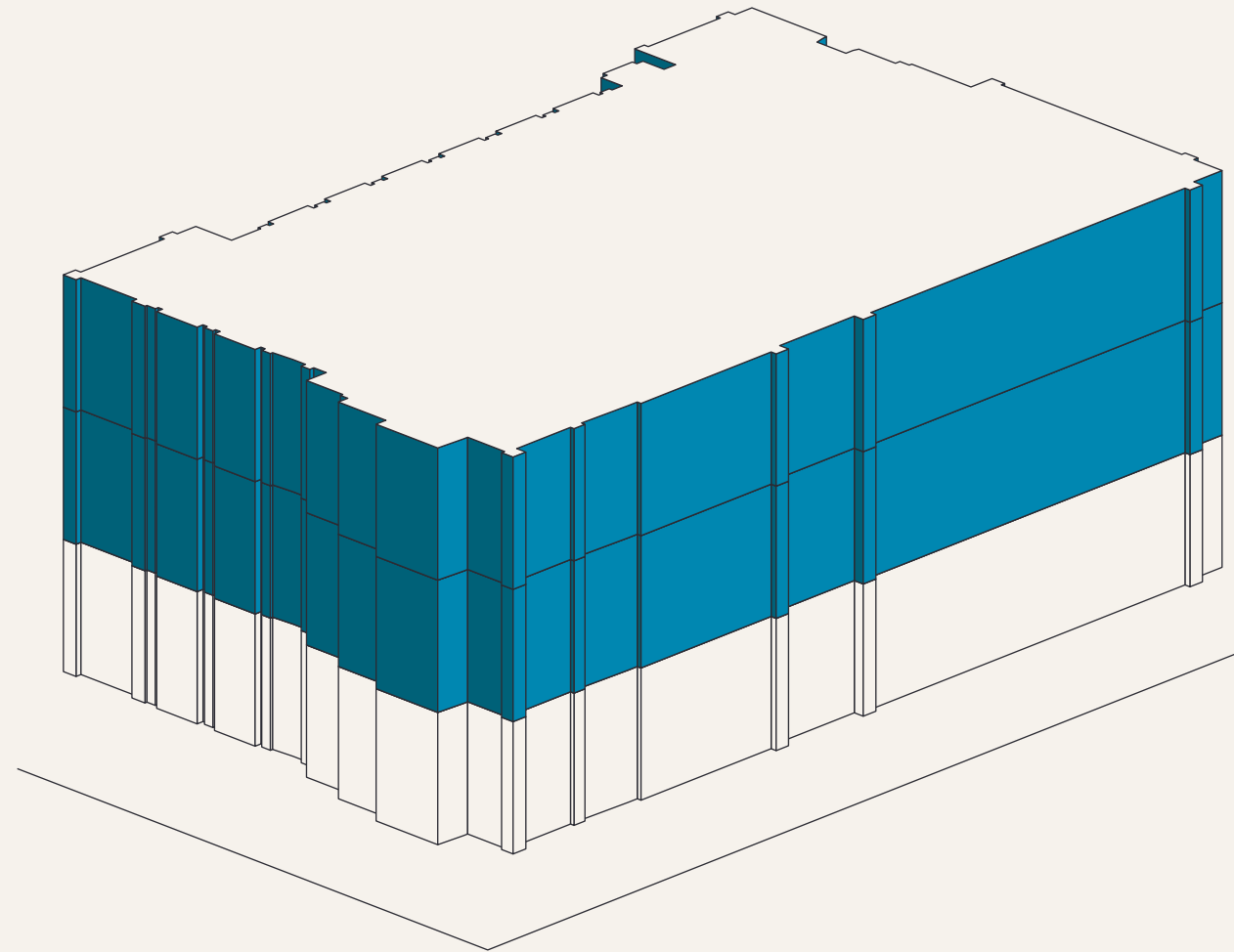
# Modern Building Steps from Metropolis in Burnaby

## BUILDING OVERVIEW

Steps from Metropolis, the largest shopping mall in British Columbia, Station Square is a modern, mixed-use development of five towers in Burnaby's Metrotown neighborhood. The building's light-filled offices make productivity easy, while its pedestrian-friendly location puts dining and entertainment at your doorstep.

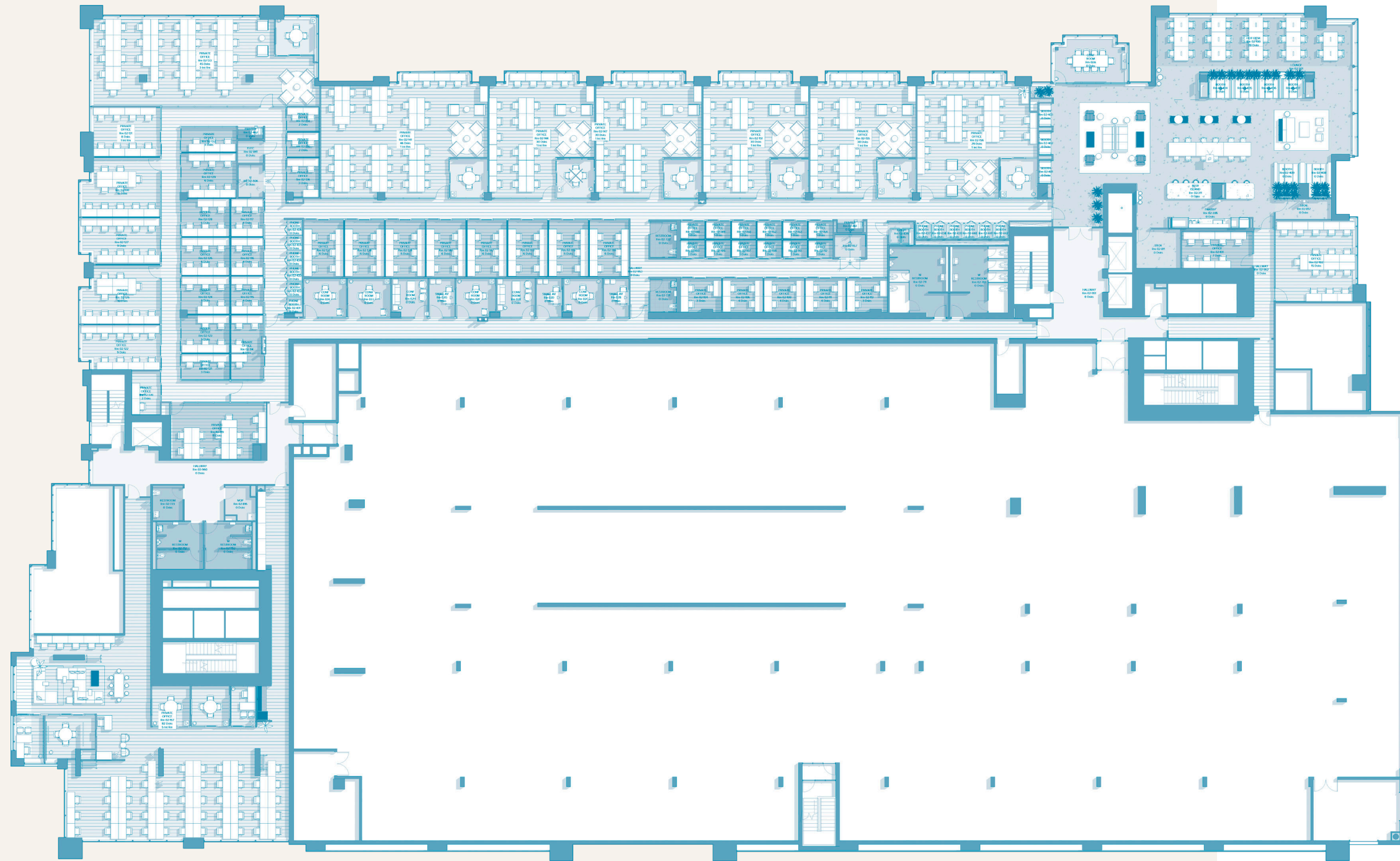
# Designed for efficiency, collaboration, and productivity

In addition to WeWork's full suite of amenities and perks—from super-fast WiFi to 24/7 security—Station Square members also have access to the building's unique amenities. Like a bike storage, an end of route room with showers, a class room and library. Looking for something in particular? Our onsite staff members will be sure to point members in the right direction.



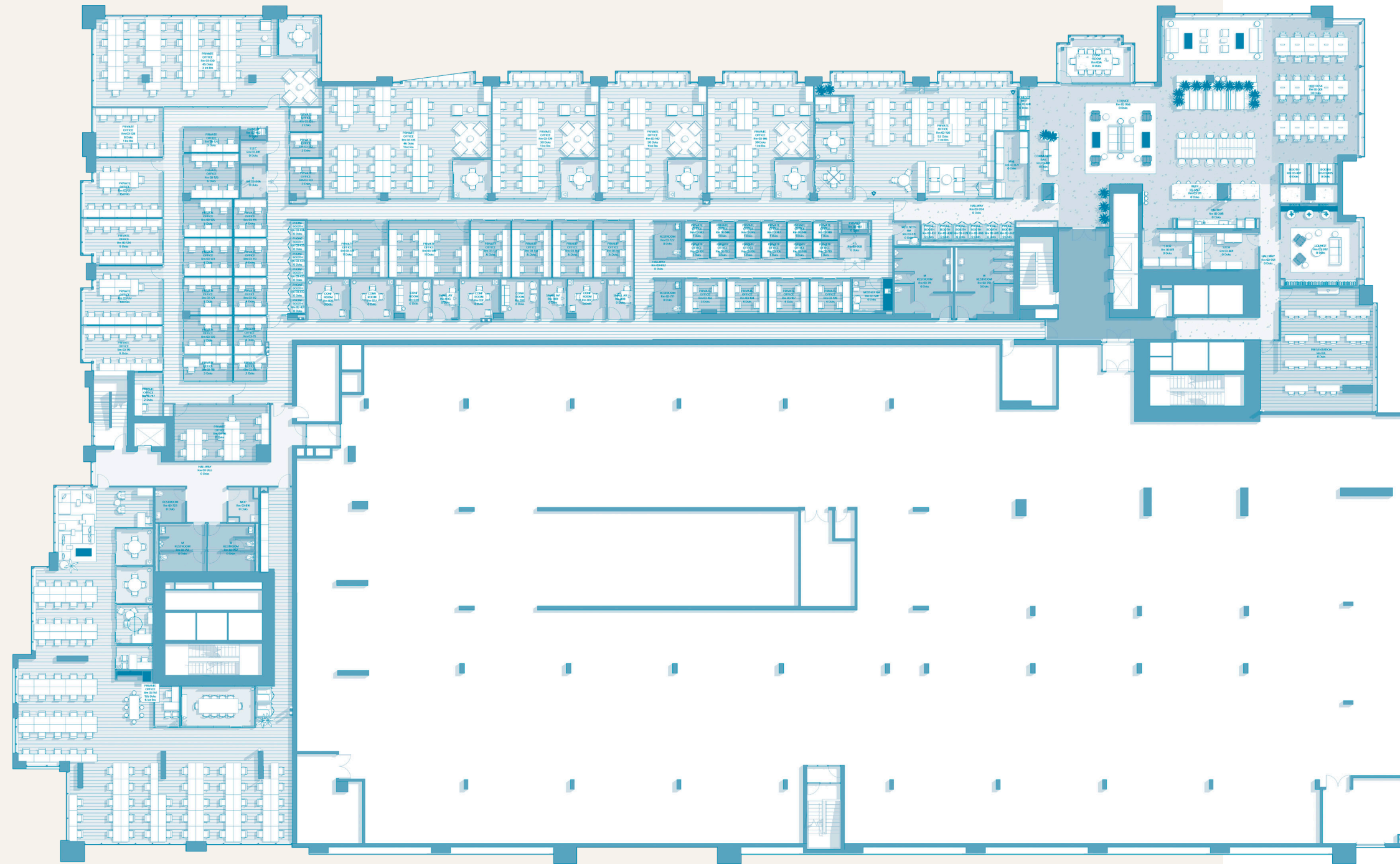
## WEWORK FOOTPRINT

FLOOR	RSF
02	28,536
03	30,283



# 2nd Floor

28,536 RSF



# 3rd Floor

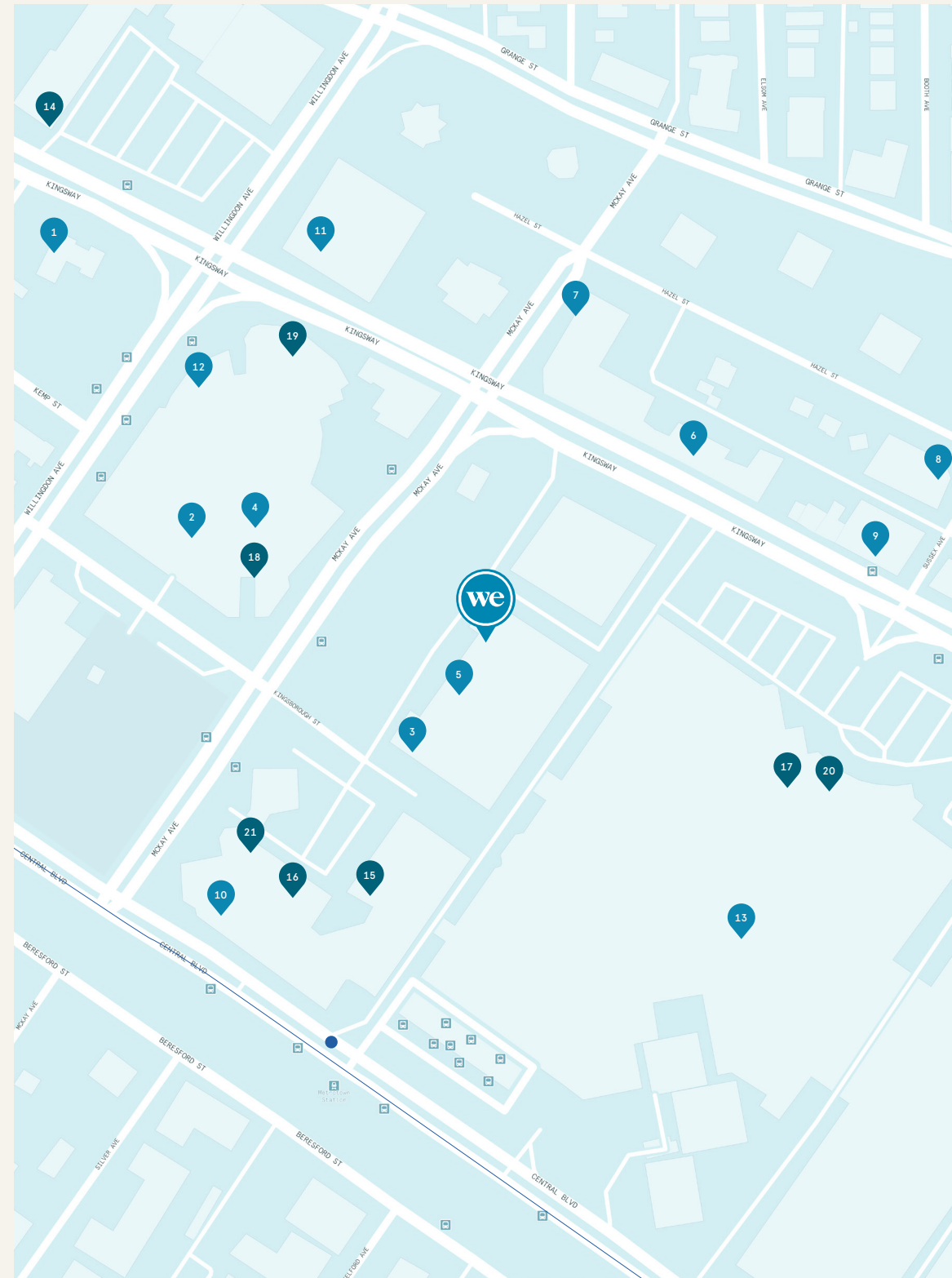
30,283 RSF

---



# The city at your doorstep

Burnaby is home to upscale shops, a vibrant culinary scene, and beautiful green spaces in nearby Central Park and South Slope. Members of Station Square can grab an afterwork drink at Earls Kitchen + Bar, pick up a pastry at Mon Paris Patisserie, or take a lunch break at the Asian food court of the nearby Crystal Mall. Plus, the Sky Train and the metro at Patterson Station are within walking distance, making it easy to commute from anywhere in the area.



## EAT & DRINK

- |                             |                            |
|-----------------------------|----------------------------|
| 1. 7 Eleven                 | 9. Sulmida Dessert Cafe    |
| 2. Aunty Lee Food           | 10. Tim Hortons            |
| 3. Cactus Club Cafe         | 11. Trattoria Burnaby      |
| 4. Comebuy Bubble Tea       | 12. Yang Guo Fu Spicy Soup |
| 5. Earls Kitchen + Bar      | 13. Yogen Fruz             |
| 6. Green Basil Thai         |                            |
| 7. Isami Sushi              |                            |
| 8. Mr. Mustache Tea Dessert |                            |

## RETAIL, LIFESTYLE, & ENTERTAINMENT

- |                         |                                   |
|-------------------------|-----------------------------------|
| 14. Anytime Fitness     | 19. HSBC Bank                     |
| 15. Best Buy            | 20. Metrotown Mall                |
| 16. Canada Post         | 21. Station Square Medical Clinic |
| 17. Cineplex Metropolis |                                   |
| 18. The Crystal Mall    |                                   |

## NEARBY TRANSPORTATION

Metrotown (SkyTrain, Expo Line)	450m
Patterson (SkyTrain, Expo Line)	900m
Royal Oak (SkyTrain, Expo Line)	1.8 km
Brentwood Town Centre (SkyTrain, Millenium Line)	4.5 km
Gilmore (SkyTrain, Millenium Line)	4.6 km
Rupert (SkyTrain, Millenium Line)	5.4 km
Vancouver International Airport	14.8 km
Moody Centre (Commuter Rail, West Coast Express)	16.6 km

6060 Silver  
Drive  
Burnaby,  
BC V5H 2Y3

---



**wework**

© 2020 WeWork. The WeWork trademark and related logos are the property of WeWork Companies LLC. Any reference to third party names are for reference and informational purposes only and should not be considered an endorsement or association of WeWork or vice versa. Photographs contained herein are representative examples of various WeWork locations and do not necessarily depict the WeWork location referenced in the brochure. While reasonable efforts have been made to check the accuracy of the information contained here, WeWork, its officers, employees, directors, and representatives, make no warranty, express or implied, regarding the accuracy of the information and disclaim any liability arising from the use of the information contained herein. All dimensions are approximate and subject to variances. It is your obligation to independently verify particulars of the property. WeWork reserves the right to make changes.