

INGLESIDE

COMMERCE

PALMETTO COMMERCE PARK

6851 WEBER BLVD
LADSON, SC 29456

BOB BARRINEAU

SENIOR VICE PRESIDENT
ROBERT.BARRINEAU@CBRE.COM
+1 843 270 7851

BRENDAN REDEYOFF

SENIOR VICE PRESIDENT
BRENDAN.REDEYOFF@CBRE.COM
+1 843 793 8839

CBRE



inglesidecommerce.com



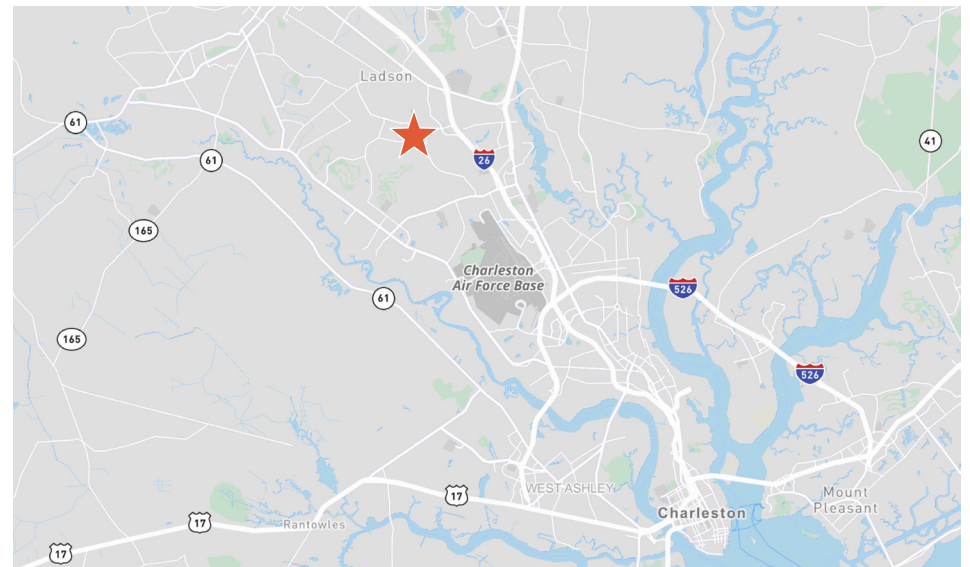
119,600 SF

UNDER CONSTRUCTION – Q1 2027 DELIVERY

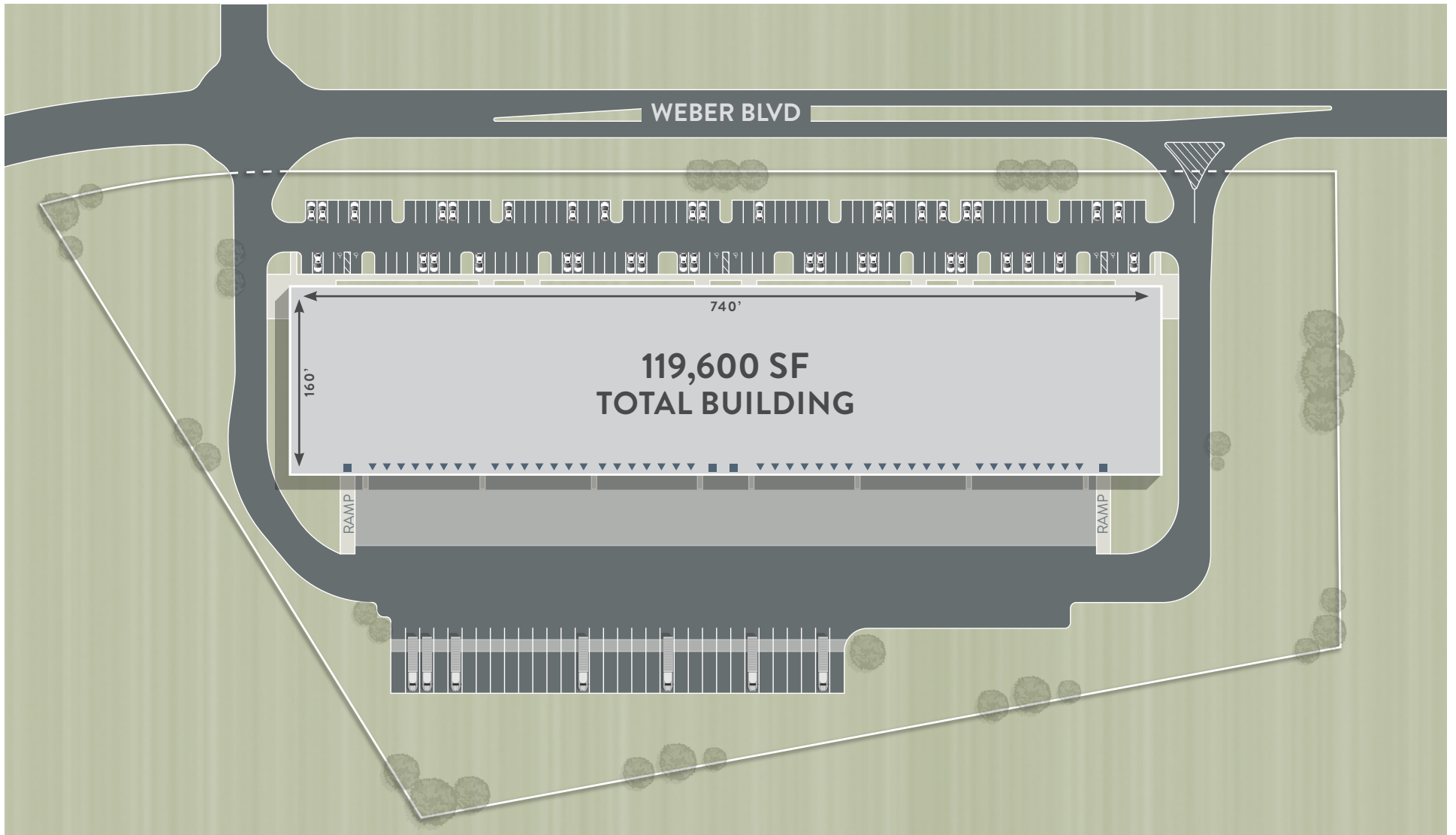
Located in thriving Palmetto Commerce Park near Boeing Interiors, Daimler, Cummins, and Shimano.

PROPERTY OVERVIEW

ADDRESS	6851 Weber Blvd
SIZE	119,600 SF
OFFICE SIZE	To Suit
COLUMN SPACING	50' x 52' and 60' Speed Bay (End-Caps are 58')
BUILDING DEPTH	160'
BAY SIZE	Interior Bay Size: 8,320 SF End Cap Bay Size: 8,800 SF
CLEAR HEIGHT	32'
SPRINKLER	ESFR
LIGHTING	LED
PARKING	136 Auto Spaces
TRUCK COURT	120'
DOCK DOORS	44
DRIVE IN DOORS	2
TRAILER SPACES	32



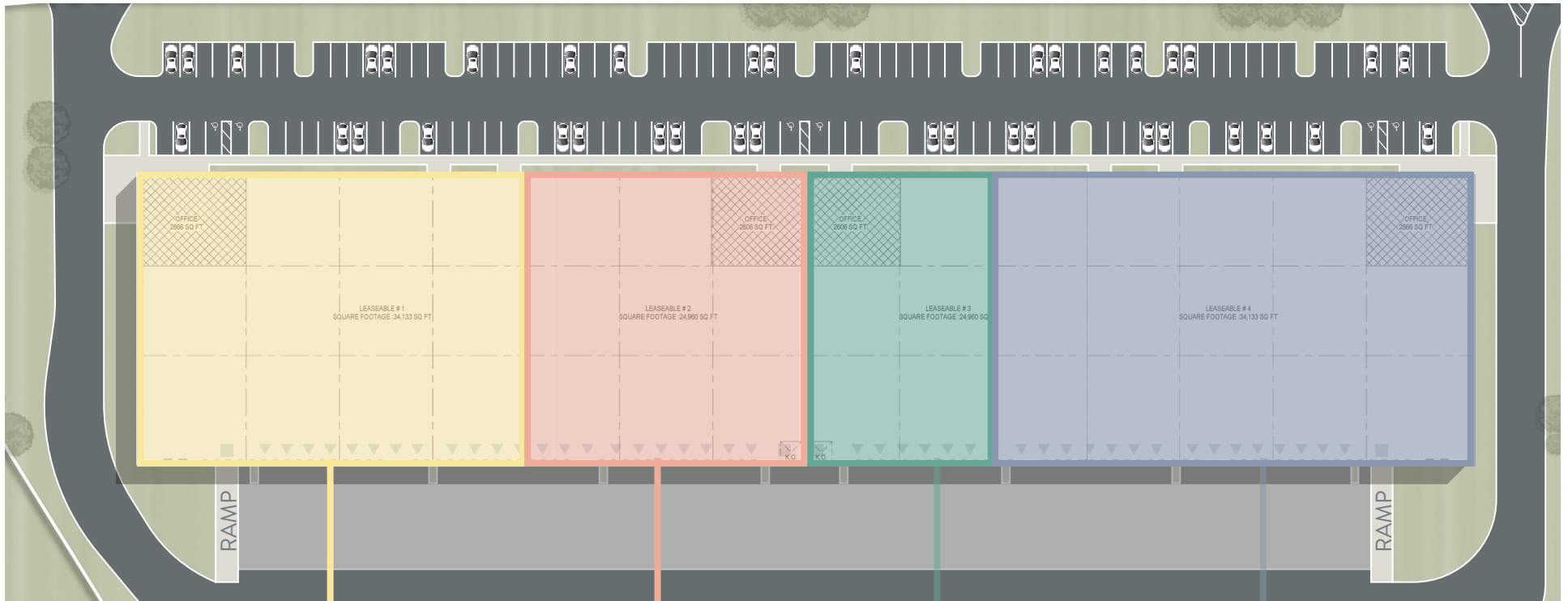
SITE PLAN



CONCEPTUAL OPTIONS

119,600 TOTAL BUILDING SF

FLEXIBLE SIZES FROM 16,640 SF – 119,600 SF



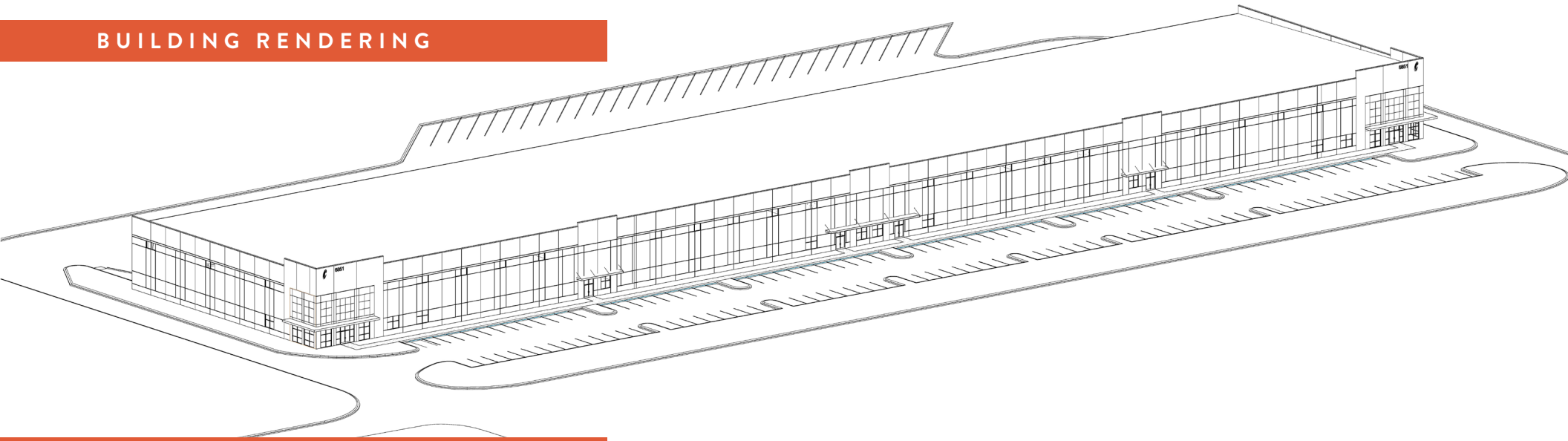
SUITE A
34,133 SF

SUITE B
24,960 SF

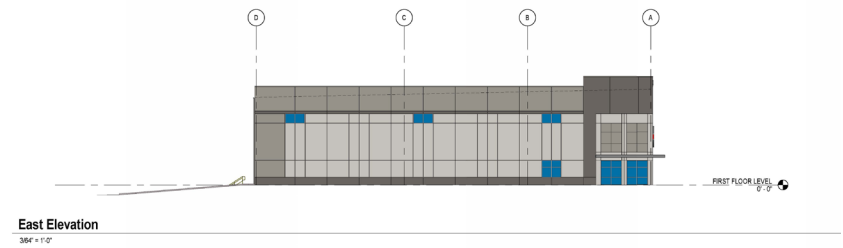
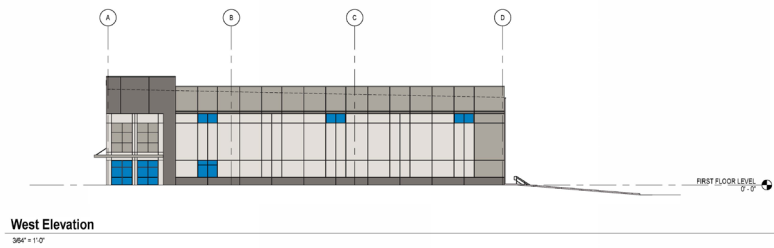
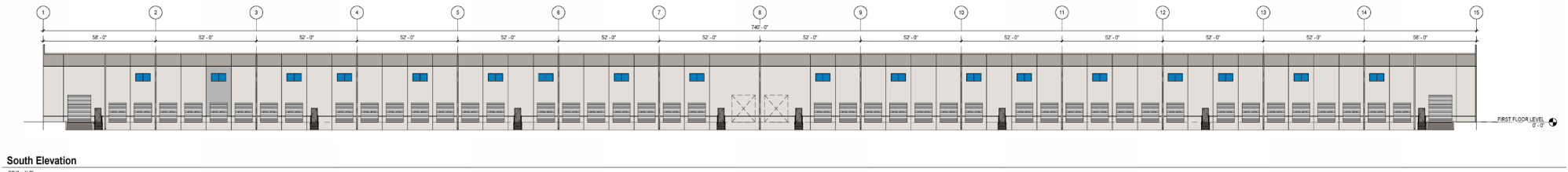
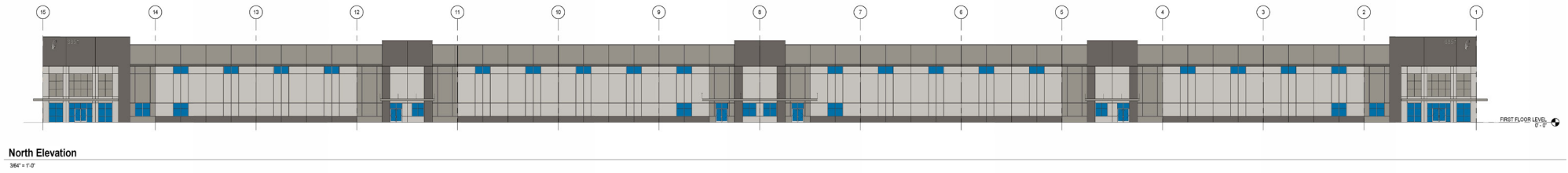
SUITE C
16,640 SF

SUITE D
42,453 SF

BUILDING RENDERING



PROPOSED ELEVATIONS



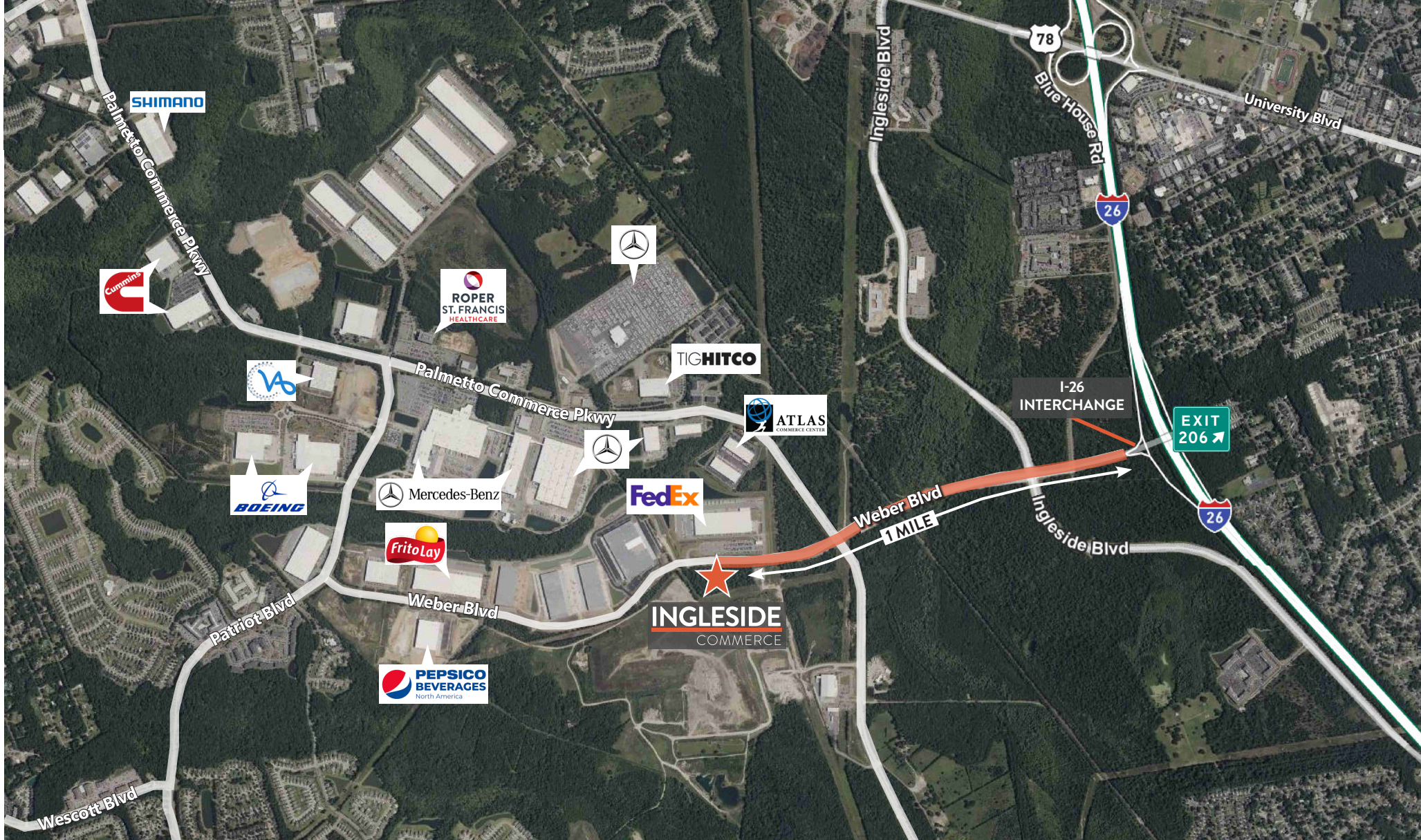
ACCESS & CONNECTIVITY



PROXIMITY MAP



AERIAL MAP

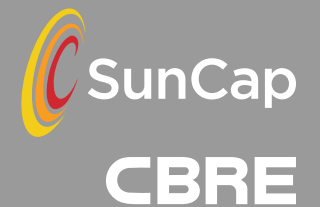




CONTACTS

BOB BARRINEAU
SENIOR VICE PRESIDENT
ROBERT.BARRINEAU@CBRE.COM
+1 843 270 7851

BRENDAN REDEYOFF
SENIOR VICE PRESIDENT
BRENDAN.REDEYOFF@CBRE.COM
+1 843 793 8839



inglesidecommerce.com