

LEASED INVESTMENT  
±16,400 SF FOR SALE

2929  
S. HARBOR,  
SANTA ANA





## PROPERTY HIGHLIGHTS



Free Standing Building



Major Frontage  
on Harbor Blvd.



Excellent  
Showroom Facility



Approximately 1,000 SF of  
Single-Story Office



Two (2)  
Ground Level Doors



18' Warehouse  
Clearance



Fully  
Sprinklered

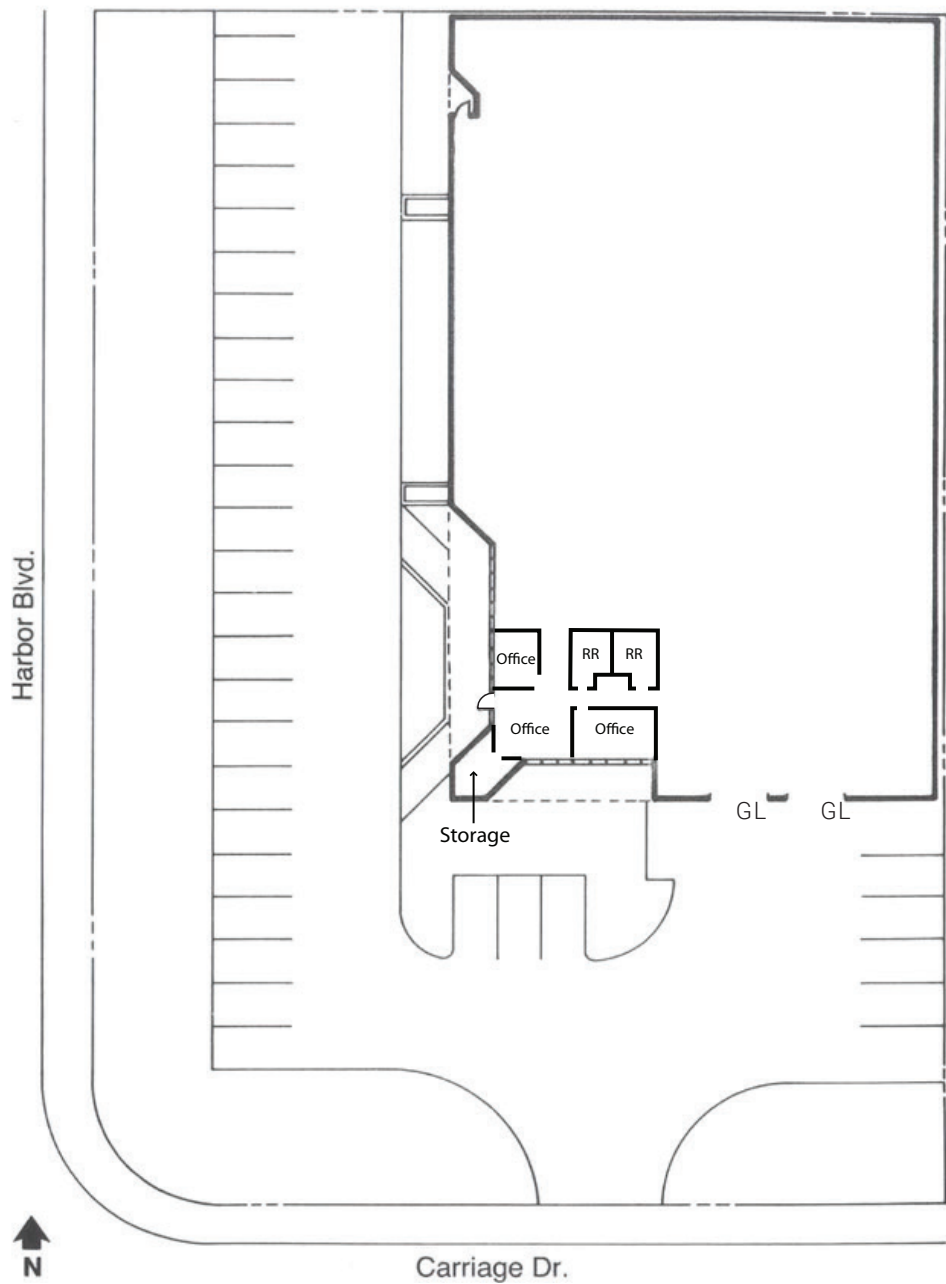


Lease  
Expiration on  
9/30/2029

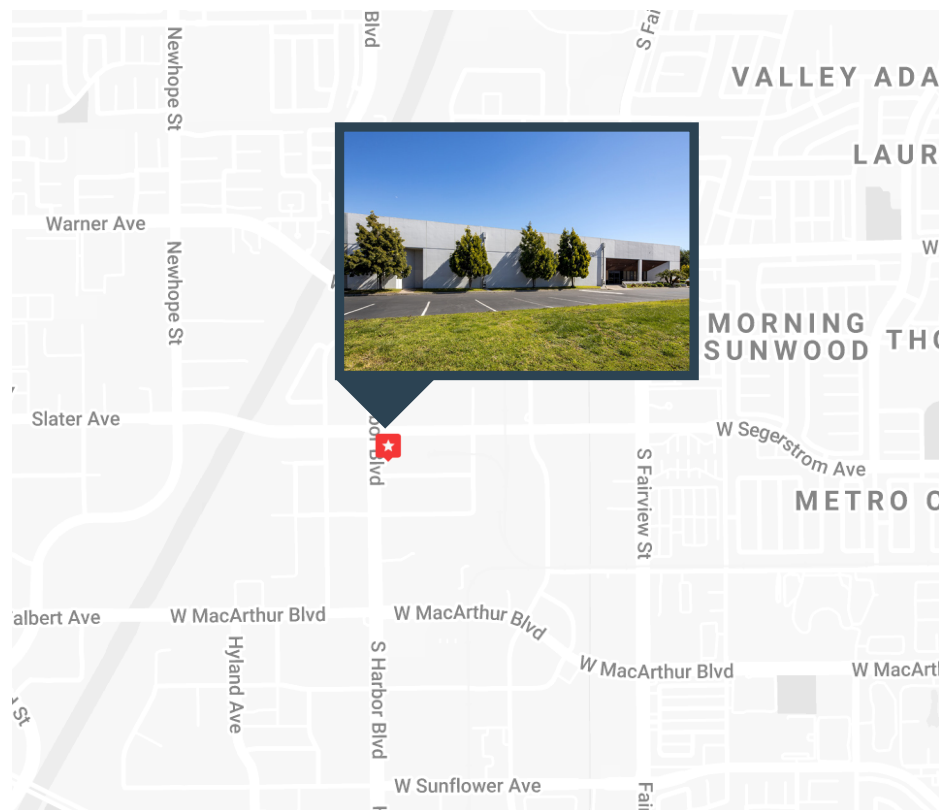


Easy Access to the  
(405) Freeway

# FLOOR PLAN



# LOCATION



For more information, please contact:

**CBRE**

**GREGG HALY**

Executive Vice President

Lic. 00937913

T +1 949 725 8632

**NICK SPATAFORE**

Senior Vice President

Lic. 01353378

T +1 949 725 8657

±16,400 SF  
FOR SALE

2929  
S. HARBOR,  
SANTA ANA



SAN DIEGO FREEWAY

S. HARBOR BLVD

