

FOR LEASE

1501  
Corporate Drive  
Boynton Beach, FL 33426

CBRE

# FOR LEASE

1501 Corporate Drive, Boynton Beach, FL 33426

## Class A Office Space

**Move-in-ready space for medical and professional users on Woolbright Road, just west of I-95.**

1501 Corporate Drive is a 28,977 SF Class A office building zoned for both medical and general office use, offering move-in-ready suites for medical practices, professional services firms, and corporate users in the heart of South Palm Beach County. The building features hurricane impact glass throughout, a private secure parking garage at 5.0 / 1,000, 24/7 electronic access with closed-circuit security, on-site property management, full fiber-optic infrastructure, and monument signage on Woolbright Road.

## HIGHLIGHTS

- › 28,977 SF Class A Office Building
- › Zoned for Medical & General Office Use
- › Hurricane Impact Glass
- › 24/7 Electronic Access & CCTV
- › Private Secure Parking Garage (5.0 / 1,000)
- › On-Site Property Management
- › Fiber-Optic Ready
- › Monument & Suite Entry Signage
- › Immediate Access to I-95



# FOR LEASE

1501 Corporate Drive, Boynton Beach, FL 33426



## FEATURES



**RATE**  
\$28.00 NNN  
\$15.50 OPEX



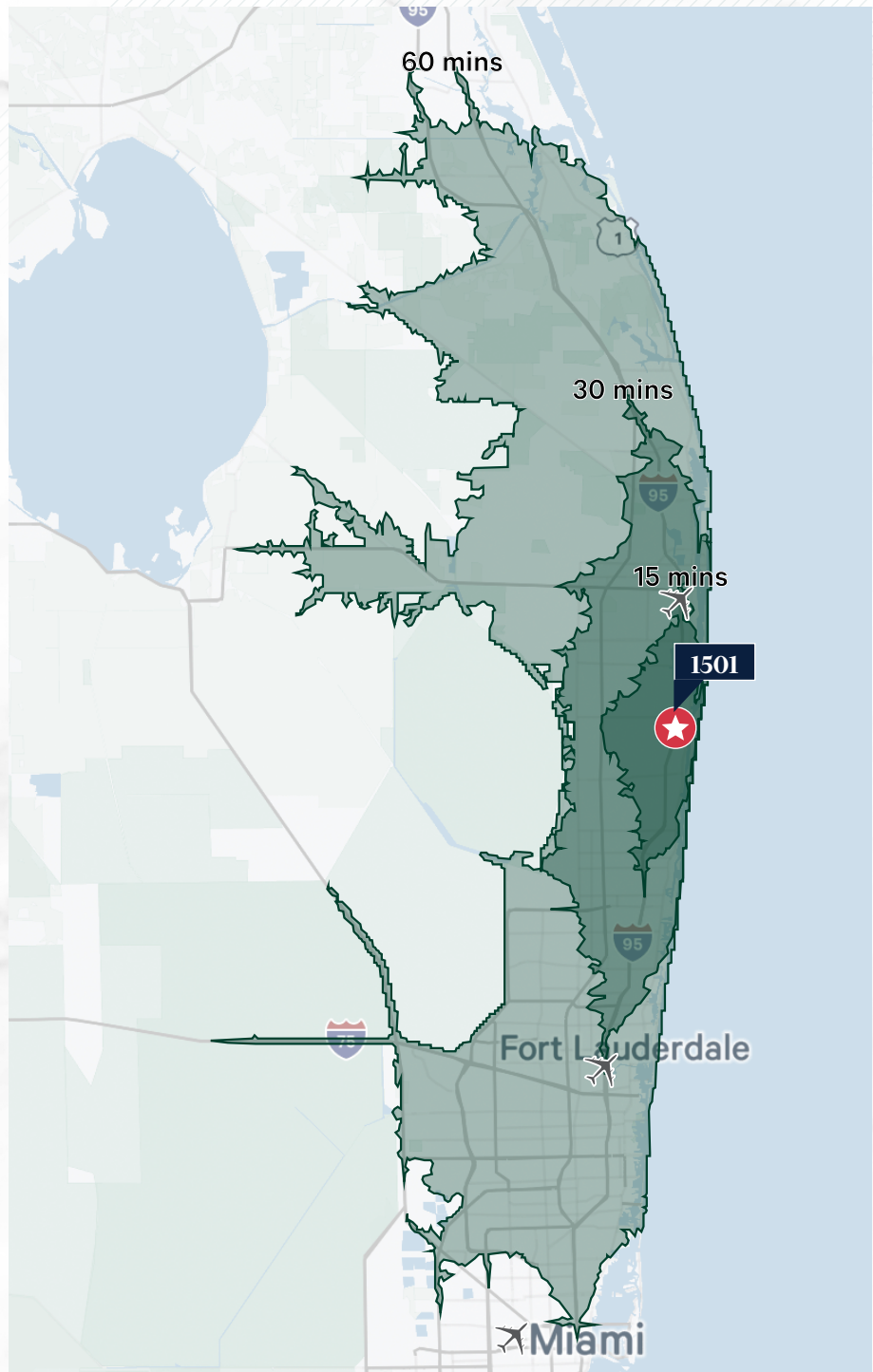
**PARKING**  
5.0 / 1,000



**SIGNAGE AVAILABLE**  
On Monument &  
Suite Entry

## DEMOGRAPHICS

- › Population: 228,798
- › Median Age: 49.9
- › Median Household Income: \$77,033
- › Bachelor's Degree or Higher: 38.8%
- › White Collar Workforce: 66.5%
- › Medicare-Enrolled Population (65+): 50,971
- › Annual Healthcare Spend per Household: \$4,997

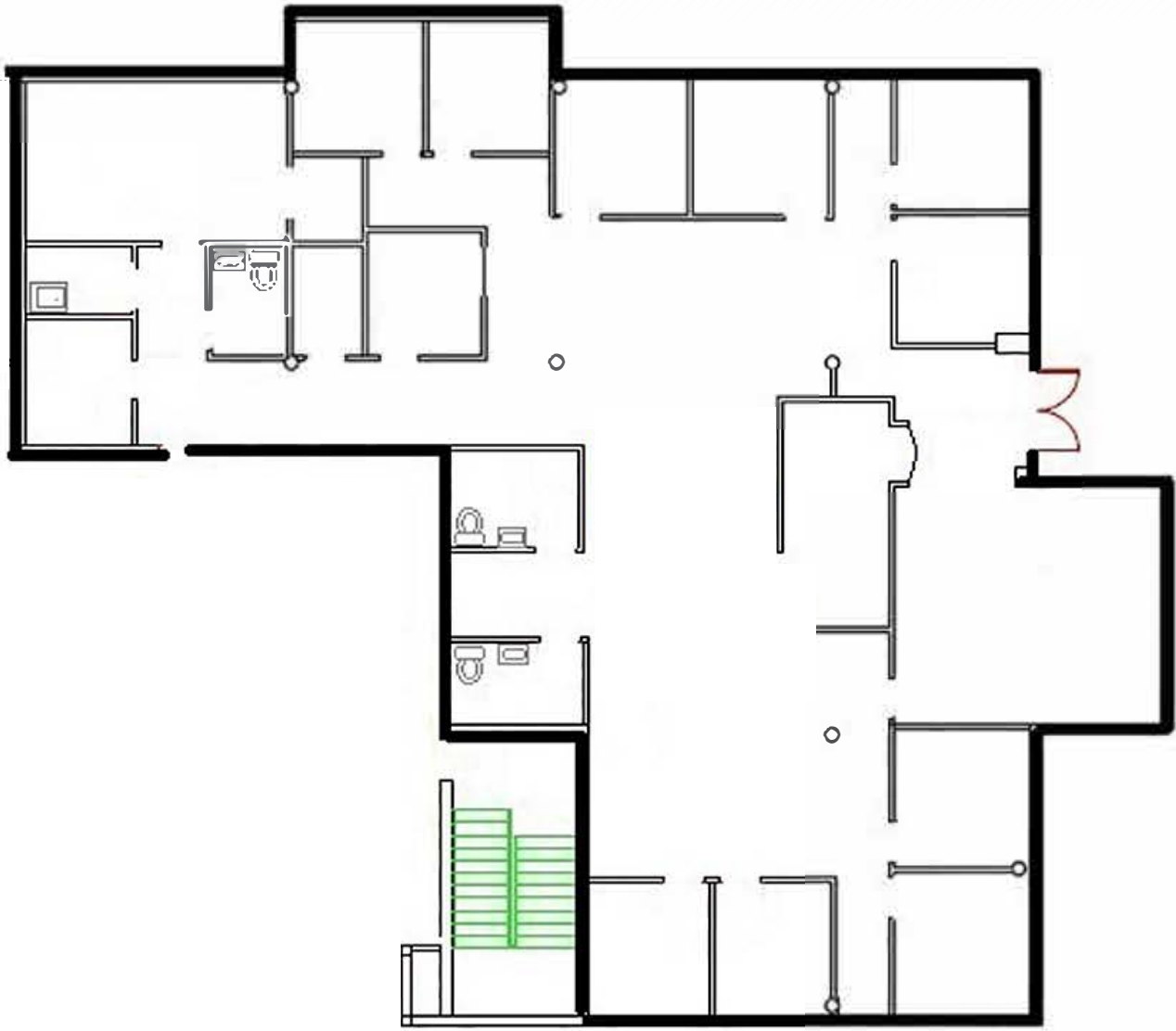


# FOR LEASE

1501 Corporate Drive, Boynton Beach, FL 33426

## FLOOR PLANS

SUITE 100 | 4,571 SF



**Christopher Dubberly**  
First Vice President  
+1 561 962 1365  
christopher.dubberly@cbre.com

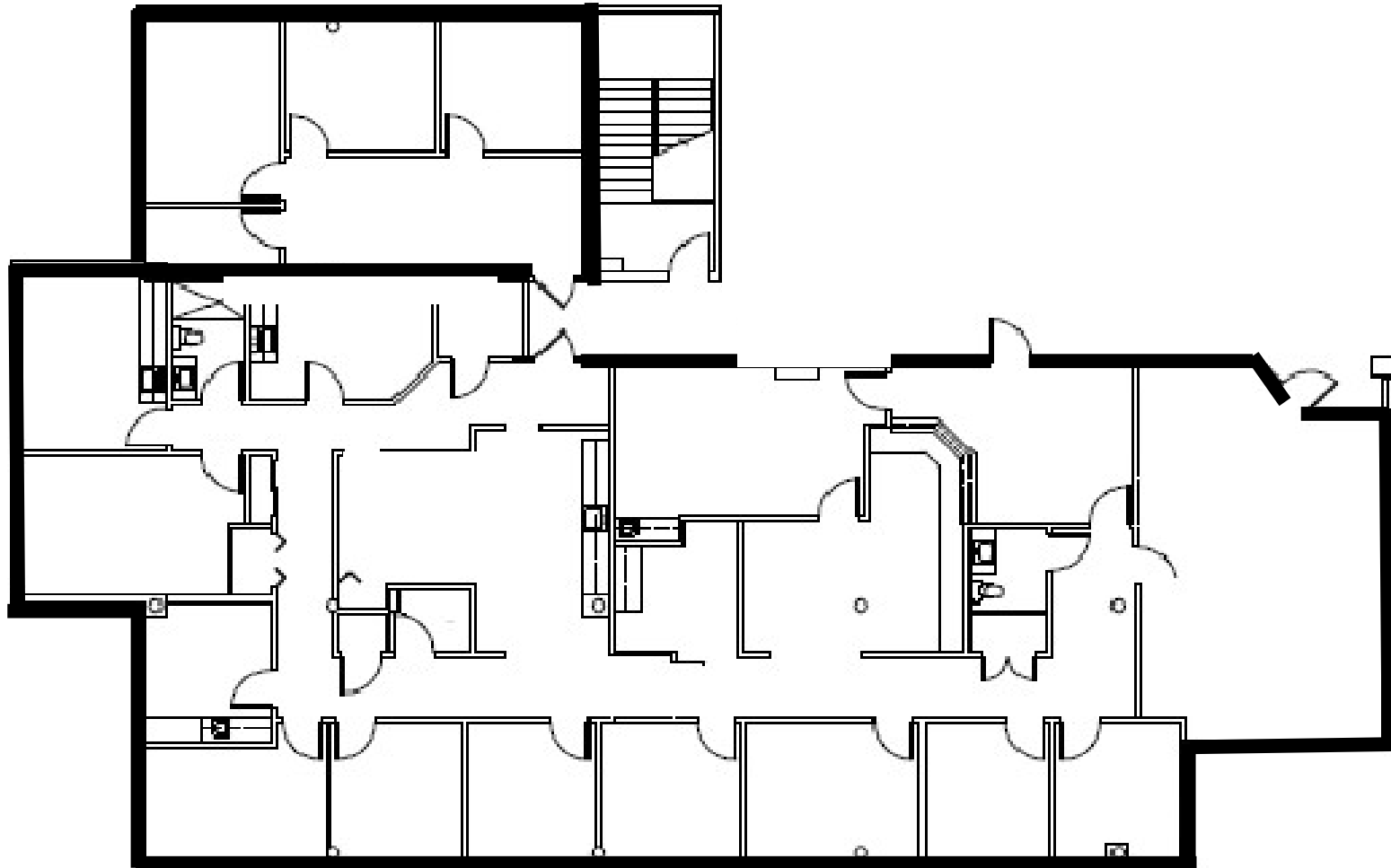
**Jacob Sanchez**  
Associate  
+1 305 915 6921  
jacob.sanchez@cbre.com

# FOR LEASE

1501 Corporate Drive, Boynton Beach, FL 33426

## FLOOR PLANS

SUITE 260 | 6,276 SF (DIVISIBLE)



**CBRE**

**Christopher Dubberly**  
First Vice President  
+1 561 962 1365  
christopher.dubberly@cbre.com

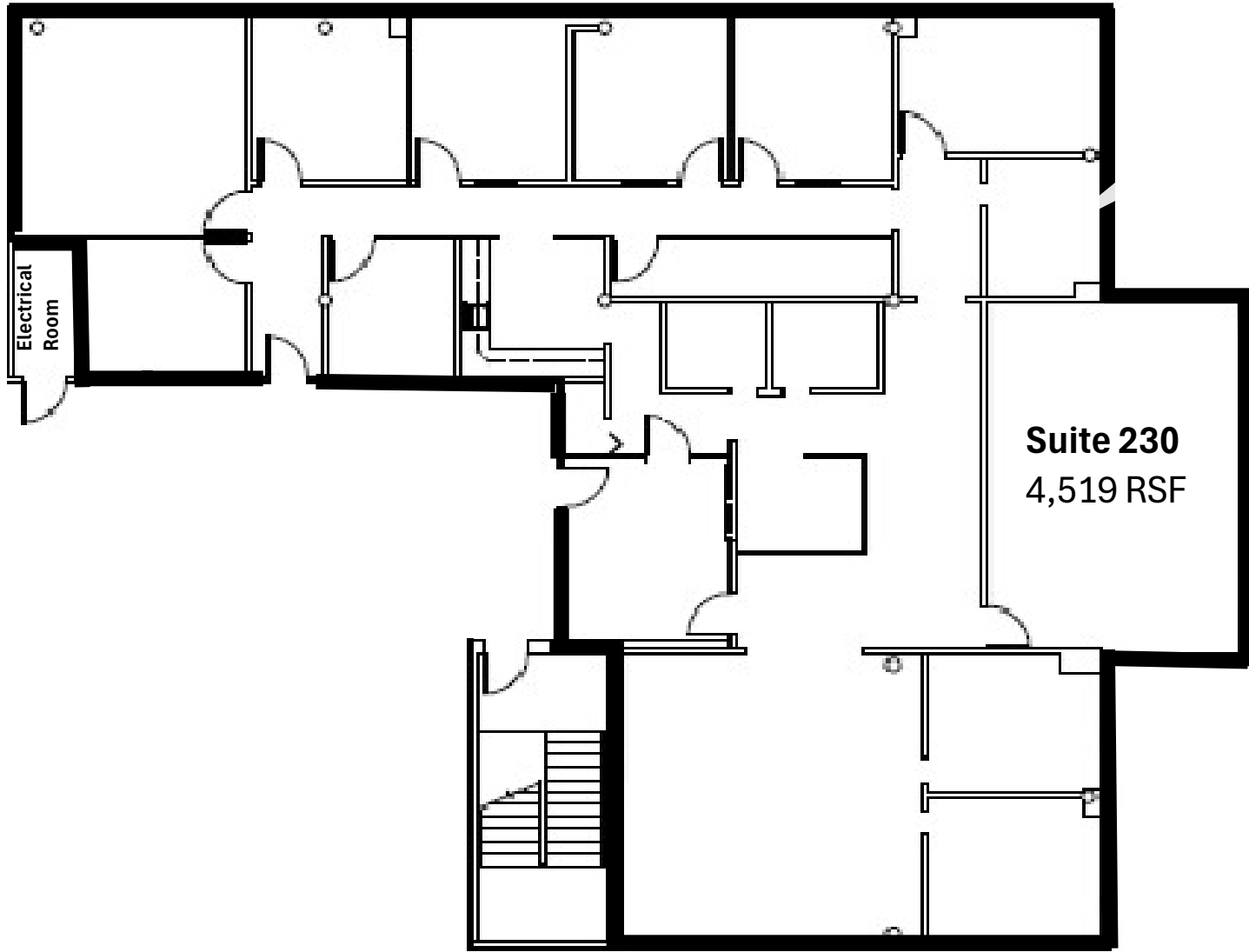
**Jacob Sanchez**  
Associate  
+1 305 915 6921  
jacob.sanchez@cbre.com

# FOR LEASE

1501 Corporate Drive, Boynton Beach, FL 33426

## FLOOR PLANS

SUITE 230 | 4,519 SF



**Christopher Dubberly**  
First Vice President  
+1 561 962 1365  
christopher.dubberly@cbre.com

**Jacob Sanchez**  
Associate  
+1 305 915 6921  
jacob.sanchez@cbre.com

# 1501

## Corporate Drive

Boynton Beach, FL 33426

---

### CONTACT US

#### **Christopher Dubberly**

First Vice President

+1 561 962 1365

[christopher.dubberly@cbre.com](mailto:christopher.dubberly@cbre.com)

#### **Jacob Sanchez**

Associate

+1 305 915 6921

[jacob.sanchez@cbre.com](mailto:jacob.sanchez@cbre.com)

© 2026 CBRE, Inc. All rights reserved. This information has been obtained from sources believed reliable, but has not been verified for accuracy or completeness. You should conduct a careful, independent investigation of the property and verify all information. Any reliance on this information is solely at your own risk. CBRE and the CBRE logo are service marks of CBRE, Inc. All other marks displayed on this document are the property of their respective owners, and the use of such logos does not imply any affiliation with or endorsement of CBRE. Photos herein are the property of their respective owners. Use of these images without the express written consent of the owner is prohibited.

