

# +/-30 AC Lake Street

## I-15 COMMERCIAL DEVELOPMENT OPPORTUNITY

### PROPERTY HIGHLIGHTS

- Located at the Lake Street / I-15 interchange
- Thousands of residential units and millions of square feet of commercial/industrial planned on Lake Street
- 6.6 acres of developable pad area with no blasting, balanced earthwork, and max 5% grade

Alberhill Villages  
FUTURE RESIDENTIAL,  
COMMERCIAL,  
INDUSTRIAL

Lake Street

Temescal Canyon Road



Alberhill Ridge  
FUTURE RESIDENTIAL,  
COMMERCIAL

Walker Canyon Road

# Lake Elsinore, California



**COLDWELL BANKER**  
**COMMERCIAL**  
**LAND TEAM**

# Executive Summary

## OPPORTUNITY

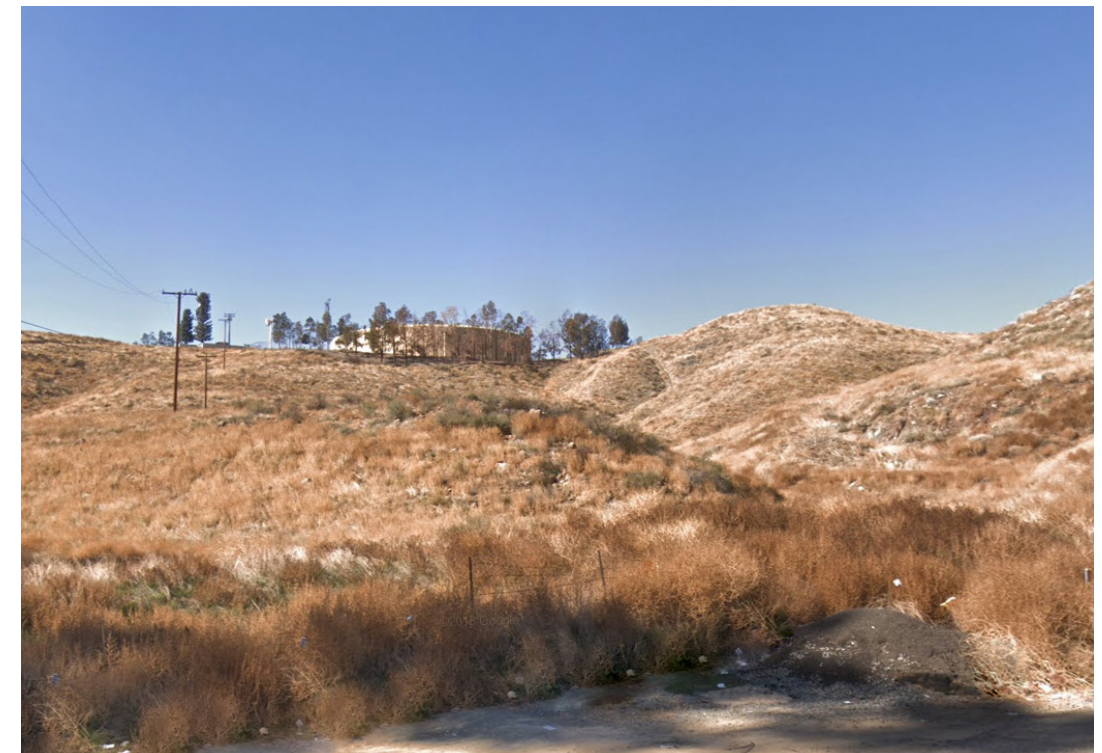
The CBC Land Team is pleased to present the opportunity to purchase +/- 30.88 gross acres of land located at the Lake Street & I-15 interchange in the City of Lake Elsinore. The site is a part of the larger Alberhill Specific Plan which encompasses thousands of residential units and millions of square feet of commercial & industrial space, primarily along Lake Street. The entirety of the site initially consisted of 270 acres, of which roughly 240 acres has already been sold to the RCA, leaving approximately 30 gross acres for development. Of the +/- 30 acres, we've estimated approximately 6.6 acres is usable based on the conceptual pad exhibit on the following page in which avoids blasting and balances from a grading standpoint. The grade also maxes out at 5% to accommodate trucks based on the various proposed uses. The +/- 6.6 net acres is split up between a larger 4.7-acre pad and smaller 1.9-acre pad. Ownership is open to selling all together or separate. Please reach out to our team with any questions or interest in this opportunity.

## PROPERTY FACTS

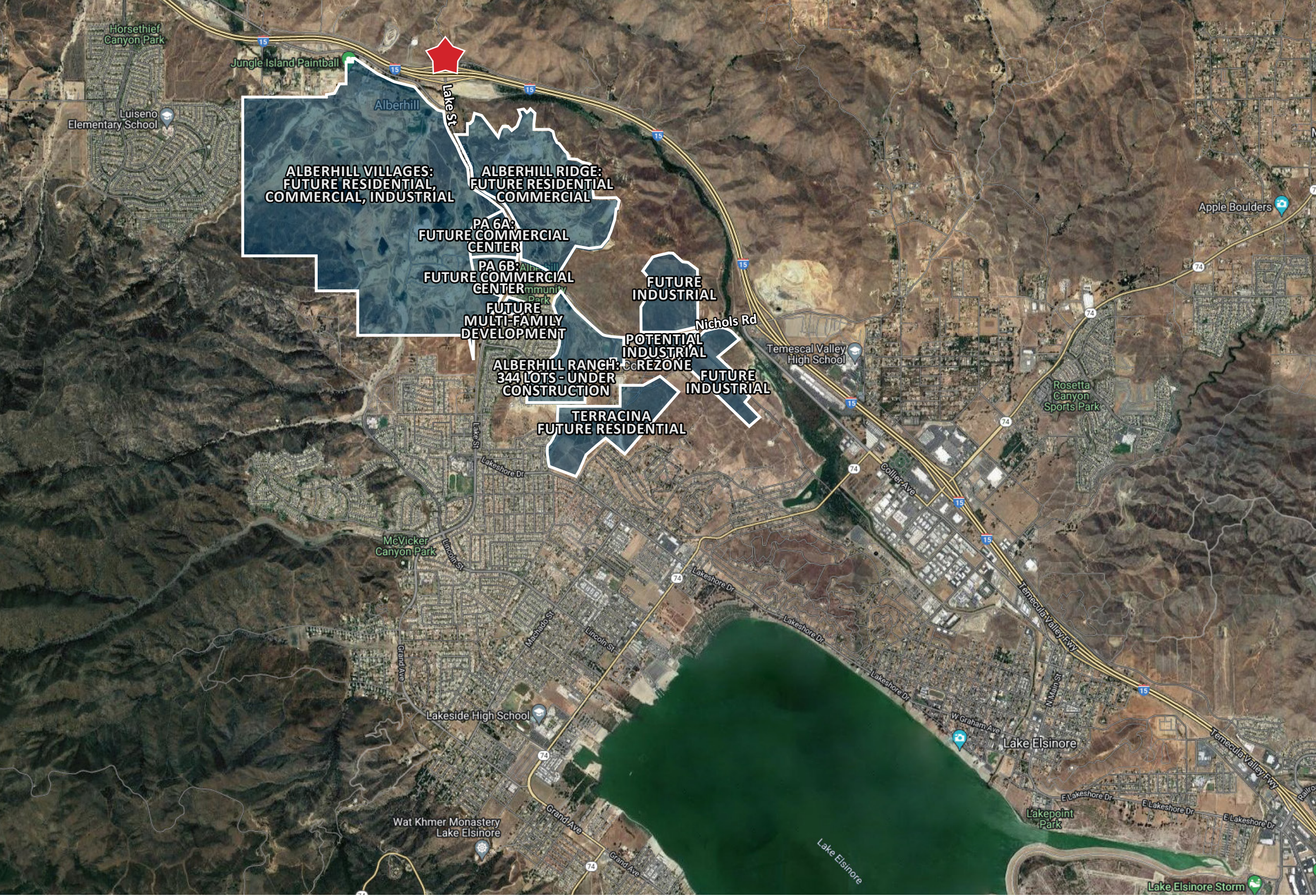
- LOCATION: Lake Elsinore, Riverside County, CA
- TOTAL SITE AREA: 30.88 Gross AC | 6.6 Net AC
- APN's: 390-120-017, 390-120-018, 390-120-019
- ZONING: ALBERHILL RANCH SPECIFIC PLAN
- LAND USE: C-SP (Commercial – Specific Plan)
- PRICE: \$5,000,000

## ZONING

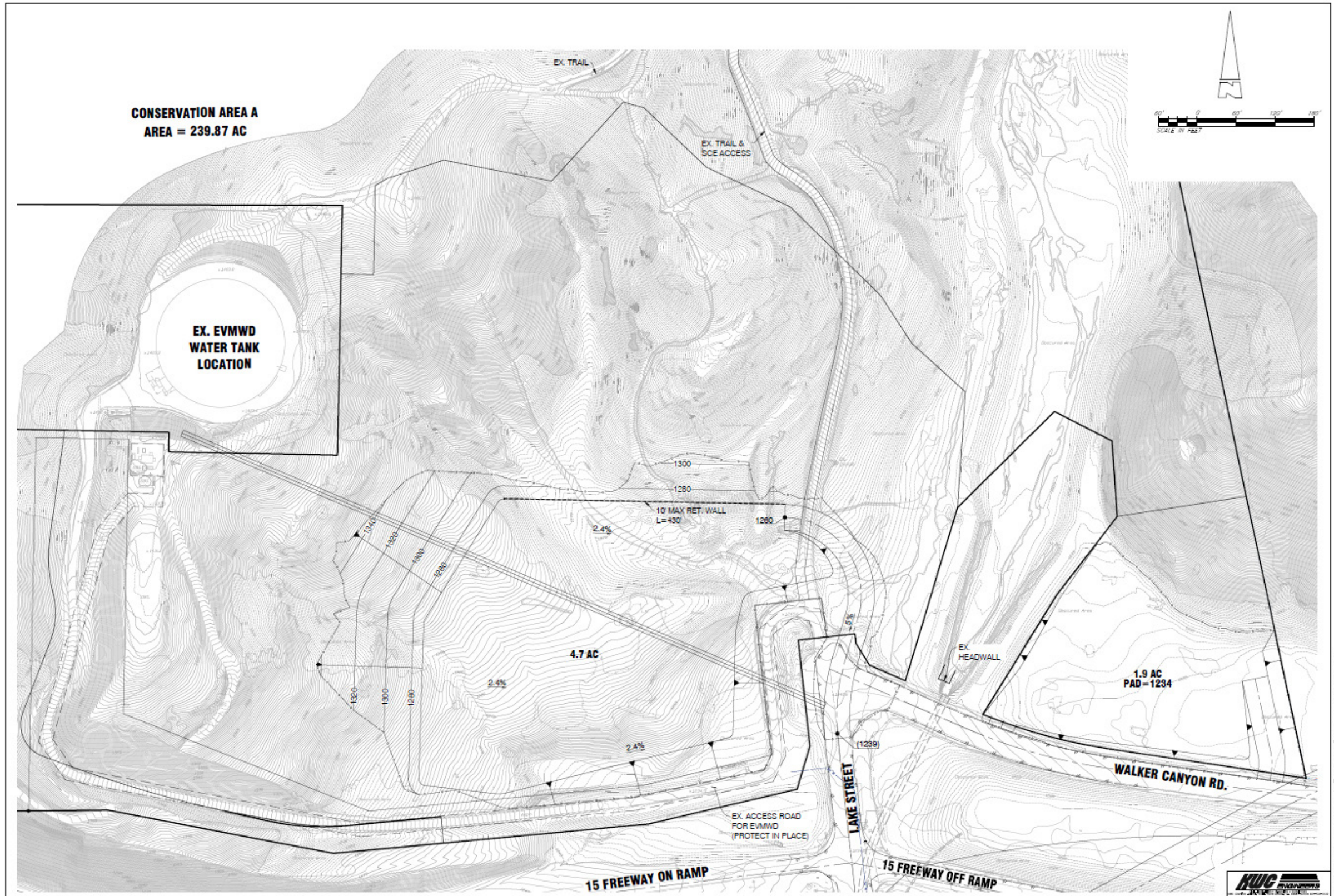
The property is located within the Alberhill Ranch Specific Plan in which it's designated as commercial with various permitted and conditionally permitted uses including, but not limited to: gas stations, travel centers, hotels, and traditional retail.



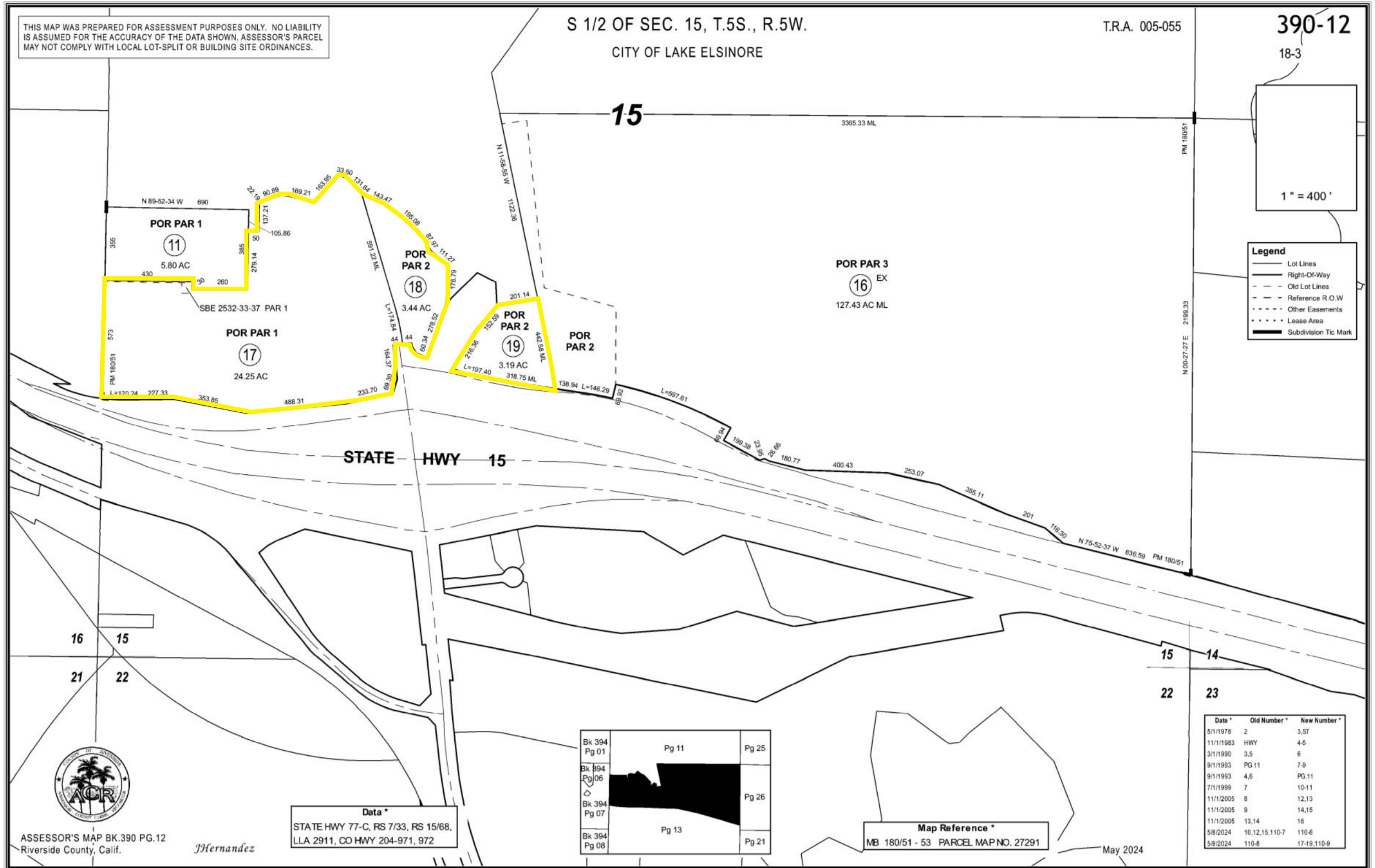
# Lake Street & Nichols Road Development Map



# Conceptual Pad Layout



# Assessor's Map



# Aerial Map

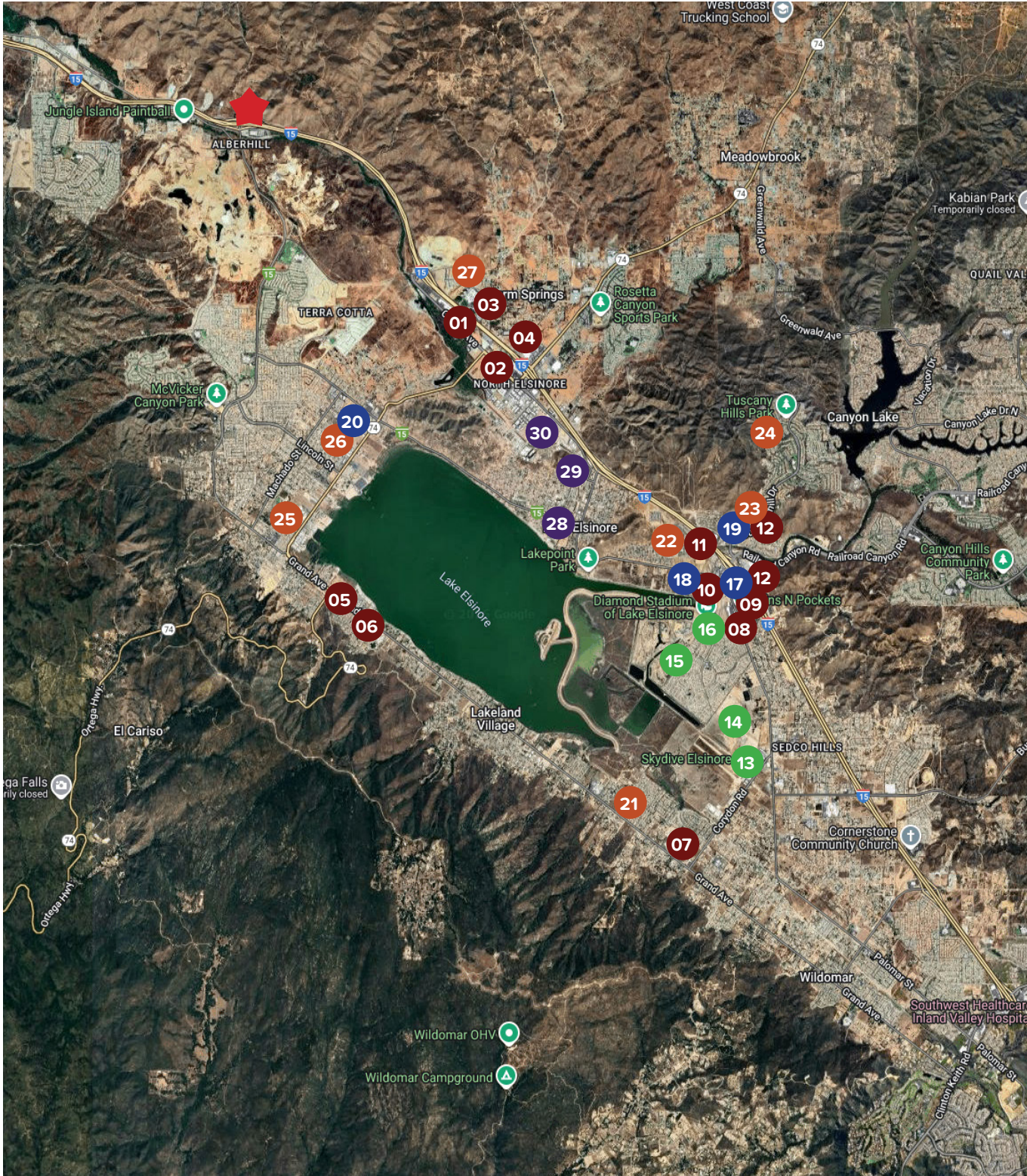


# Aerial Map





# Surrounding Retail & Public Works



## SHOPPING CENTERS

- 01 Outlets at Lake Elsinore
- 02 Lake Elsinore Square
- 03 Lake Elsinore Market Place
- 04 Central Plaza
- 05 Ortega Oaks Plaza
- 06 Lake Country Plaza
- 07 Grand Plaza
- 08 Lake Elsinore Town Center
- 09 Mission Trail Plaza
- 10 Lake Elsinore Valley Center
- 11 Shoppers Square
- 12 Railroad Canyon Plaza

## EDUCATION

- 21 Lakeland Village School
- 22 Railroad Elementary School
- 23 Canyon Academy
- 24 Tuscany Hills Elementary School
- 25 Lakeside High School
- 26 Diego Hills Charter School
- 27 Temescal Valley High School

## GOVERNMENT FACILITIES

- 28 Lake Elsinore City Hall
- 29 Lake Elsinore Public Works
- 30 Department of Public Social Services

## ENTERTAINMENT

- 13 Skydive Elsinore
- 14 Lake Elsinore Motorsports Park
- 15 The Links at Summerly
- 16 Storm Stadium

## MEDICAL FACILITIES

- 17 Lake Elsinore Mental Health Facility
- 18 Mission Valley Medical Center
- 19 A Plus Urgent Care
- 20 Vista Community Clinic

# Location Overview

## LAKE ELSINORE

California’s third fastest growing city; located 15 miles Northwest of Temecula and 20 miles South of Riverside. The City is popular with residents due to the variety of recreational activities and the year-round mild climate which lies in the Southwestern section of Riverside County. Closely bordering Orange and Los Angeles county, the community includes a large number of upper middle-class professionals and provides the allure and charm of the 1920’s with the restored downtown features of vintage street lamps and attractive window canopies.

Lake Elsinore’s most popular and prominent outdoor activities include boating, water skiing, wind surfing, fishing, swimming and other activities on the beach. The lake offers beautiful campgrounds and it’s a short drive to the scenic Cleveland National Forest. The Elsinore Valley is popular with skydiving enthusiasts due to the well-known thermal winds. Excellent opportunities for hiking, bicycle riding and bird watching are available. The Trabuco Canyon Trail and the Chiquito Trail are popular with outdoor enthusiasts.

Lake Elsinore Diamond or “Storm Stadium” serves as the site for the Single A minor league baseball team Lake Elsinore Storm. As part of the California league, a farm team for the Major League San Diego Padres, fans of all ages enjoy baseball at the professional level. The Stadium is also host to boxing matches, concerts, local high school graduations and the annual “Field of Screams” event during Halloween with an impressive seating capacity of up to 14,000.

Wildomar, incorporated in 2008, neighbors Lake Elsinore. The population of Wildomar has surpassed 32,000, an increase from 14,064 at the 2000 census, when the community was still an unincorporated census-designated place.




---

2025 Summary

---

Population	70,265
Households	20,416
Median Age	33.4
Median Household Income	\$95,613

---

# Location Overview

## RIVERSIDE COUNTY

The largest region of Southern California, the Inland Empire, comprised of both Riverside and San Bernardino Counties, is one of the most significant economies in the United States. It has been rated in the top tier for various measures of growth from population and job creation to construction and office space absorption over the last decade. It is generally considered to be the area between the southern coastal areas of Orange County, Los Angeles, and the Palm Springs CA, and other desert cities. Inland Empire contains over 50 cities, including Riverside, San Bernardino, Rancho Cucamonga, Ontario and Temecula's Wine Country to the south.

The U.S. Census Bureau-defined Riverside-San Bernardino-Ontario metropolitan area covers more than 27,000 square miles (70,000 km<sup>2</sup>) and has a population of approximately 4 million. Most of the area's population is located in southwestern San Bernardino County and northwestern Riverside County. At the end of the 19th century, the Inland Empire was a major center of agriculture, including citrus, dairy, and wine-making. Agriculture declined through the 20th century, and since the 1970s a rapidly growing population, fed by families migrating in search of affordable housing, has led to more residential, industrial, and commercial development.

The Inland Empire is poised for extreme growth. The Inland Empire has added over half a million people in the past five years bringing the current population to 4.4 million. The Southern California work force has been migrating to the Inland Empire for reasons such as affordable land, excellent quality of life and relatively lowers housing prices coupled with efficient and multiple transportation routes. In fact, the Riverside-San Bernardino Primary Metropolitan Statistical Area is California's 2nd and the nation's 12th most populous region. The Inland Empire market continues to be one of the largest and most dynamic areas in the country, with diminishing land supply as well as steady absorption and demand, the area is poised for continued success. The area benefits from its infrastructure and the growing population who would prefer to live and work in the same community. There are many factors that continue to contribute to the sustained economic growth of the Inland Empire. These include:

- The Inland Empire offers a strategic West Coast location, vast amounts of available land for future growth, a highly-skilled and educated work force, a sophisticated transportation infrastructure, and access to 27 colleges and universities, including seven research institutions. The area features a changing economic landscape with emerging technological productivity, and employs an excess of 1 million people. The Inland Empire is also one of America's most unique regions, featuring impeccable mountains, lakes, deserts, and ample recreation and sporting activities, all within an hour's drive to the shores of the Pacific Ocean.
- Each year, millions visit the county to take advantage of the glorious desert winter, attend the Riverside County Fair and National Date Festival, the Balloon and Wine Festival, the Palm Springs International Film Festival, the Coachella and Stagecoach mega-concerts, the Paribas Open at the Indian Wells Tennis Center and the Humana Challenge, the golf tournament formerly known as the Bob Hope Classic. All those, joined with a rich, cultural heritage and frontier history, make Riverside County a great place live, work or visit.



# Location Overview

## RIVERSIDE COUNTY DEMOGRAPHICS

Riverside County is one of the fastest growing counties in the United States, leading the rapidly changing Inland Empire market, with rivers, mountain peaks, deserts and fertile valleys, Riverside County offers diversity that few locations can match. More than two million people live in Riverside County, making it the fourth most populous county in California, taking advantage of affordable housing, nearby beaches, mountains, hiking and bike trails, the Wine Country near Temecula and resorts that offer oases in the desert. Riverside County covers 7,208 square miles in Southern California. Together, Riverside and San Bernardino Counties have been dubbed the Inland Empire.

California's fourth largest county by population is expanding its economy, working to diversify beyond the housing industry that has driven the region's economy for years.

Centrally located in the heart of Southern California; Riverside County borders San Bernardino, Orange and San Diego Counties. Interstate 10 runs through the entire County from east to west, and Interstates 15 and 215 connect Riverside County with San Diego County and San Bernardino County. Highway 60 and 91 link Riverside County to Los Angeles and Orange Counties. Attractive to many businesses, rail service connects Riverside County businesses with important markets, ports of entry, and key airports to expedite major national and international commerce transactions. Metrolink provides a large number of commuters from Riverside to Los Angeles, Orange and San Bernardino Counties. In addition, Riverside County is presently served by 3 airports including the rapidly expanding Ontario international Airport, Palm Springs International Airport and San Bernardino International Airport.

### 2025 Summary

Population	2,529,933
Households	797,569
Median Age	37.6
Median Household Income	\$89,672
Average Household Income	\$93,172



**FOR MORE INFORMATION CONTACT:**

**MIKE PIZZAGONI**

DIRECT: (951) 267-2912

CELL: (480) 625-7495

E-MAIL: [mpizzagoni@cbcsocalgroup.com](mailto:mpizzagoni@cbcsocalgroup.com)

CALDRE: 02200504

**ERIC WASHLE**

DIRECT: (951) 297-7429

CELL: (714) 323-3862

E-MAIL: [ericw@cbcsocalgroup.com](mailto:ericw@cbcsocalgroup.com)

CALDRE: 02076218

**BRANDON SUDWEEKS**

DIRECT: (951) 297-7425

CELL: (951) 442-3763

E-MAIL: [brandons@cbcsocalgroup.com](mailto:brandons@cbcsocalgroup.com)

CALDRE: 01435174



**COLDWELL BANKER  
COMMERCIAL  
LAND TEAM**

27368 Via Industria, Suite 102

Temecula, CA 92590

T:(951) 200-7683 | F:(951) 239-3147

[www.cbcsocalgroup.com](http://www.cbcsocalgroup.com)

CALDRE: 02089395