



# THE OFFICES AT SWEETWATER

4645-4675 SWEETWATER BLVD | SUGAR LAND, TX 77479

**CBRE**



# THE OFFICES AT SWEETWATER

The Offices at Sweetwater is a four-building medical office park consists of a total of 72,978 RSF, providing exceptional opportunities for healthcare providers and professional offices.

- 4645 Sweetwater: 20,963 SF
- 4665 Sweetwater: 20,941 SF
- 4655 Sweetwater: 22,833 SF
- 4675 Sweetwater: 6,685 SF

## Prime Location:

Nestled in Sugar Land's bustling First Colony neighborhood on Sweetwater Blvd, just south of I-69 near Lexington Blvd, providing patients easy access to major thoroughfares.

## Ample Parking:

The property has a 4/1,000 SF parking ratio, including covered reserved spaces available.

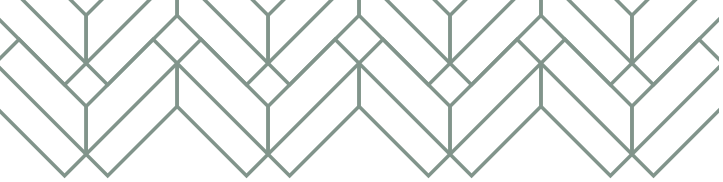
## Modern Amenities:

All four buildings have recently completed full renovation of the interior common area, lobby, and restrooms providing for a more modern and patient friendly atmosphere.

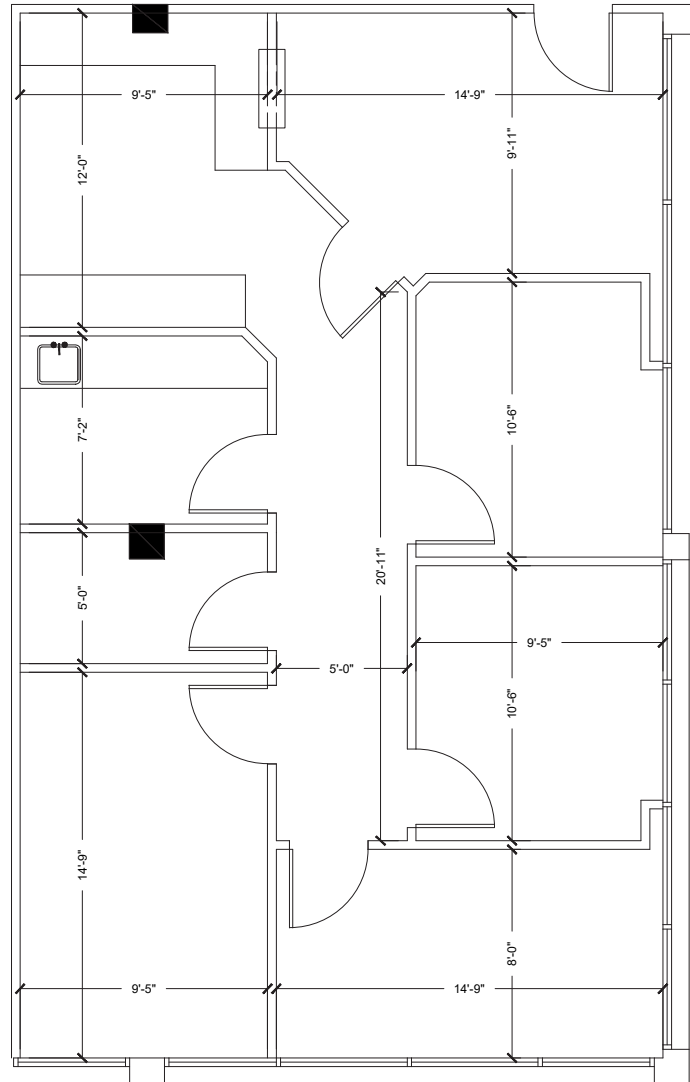
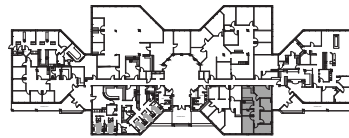
## Signage:

Each building has its own monument sign, providing ample signage opportunities.

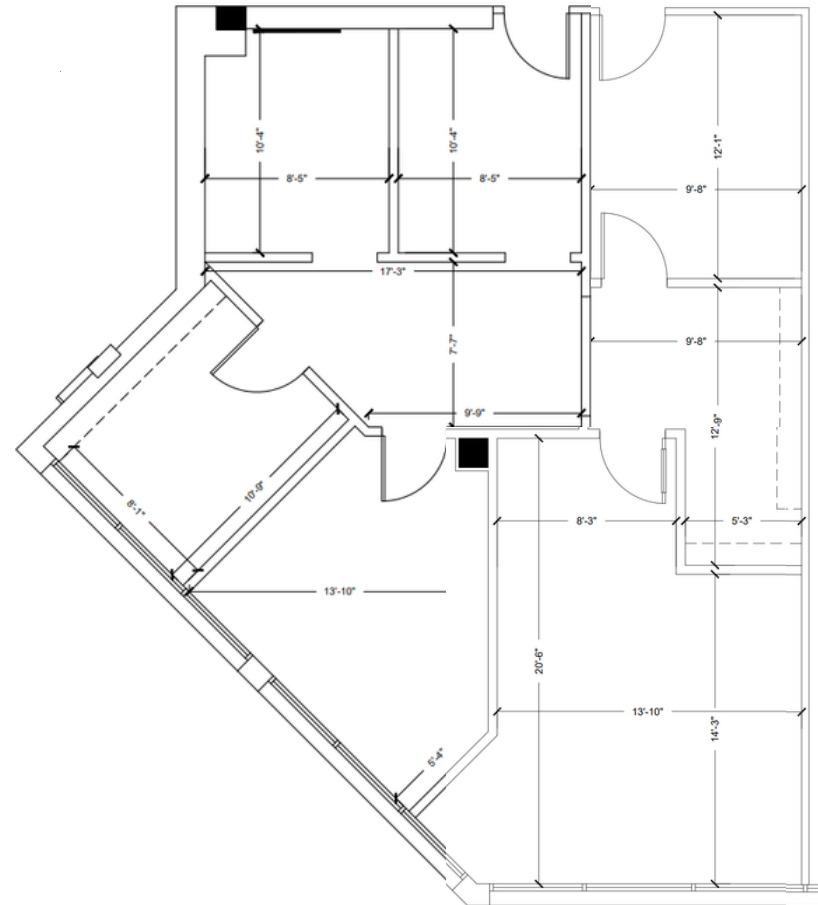




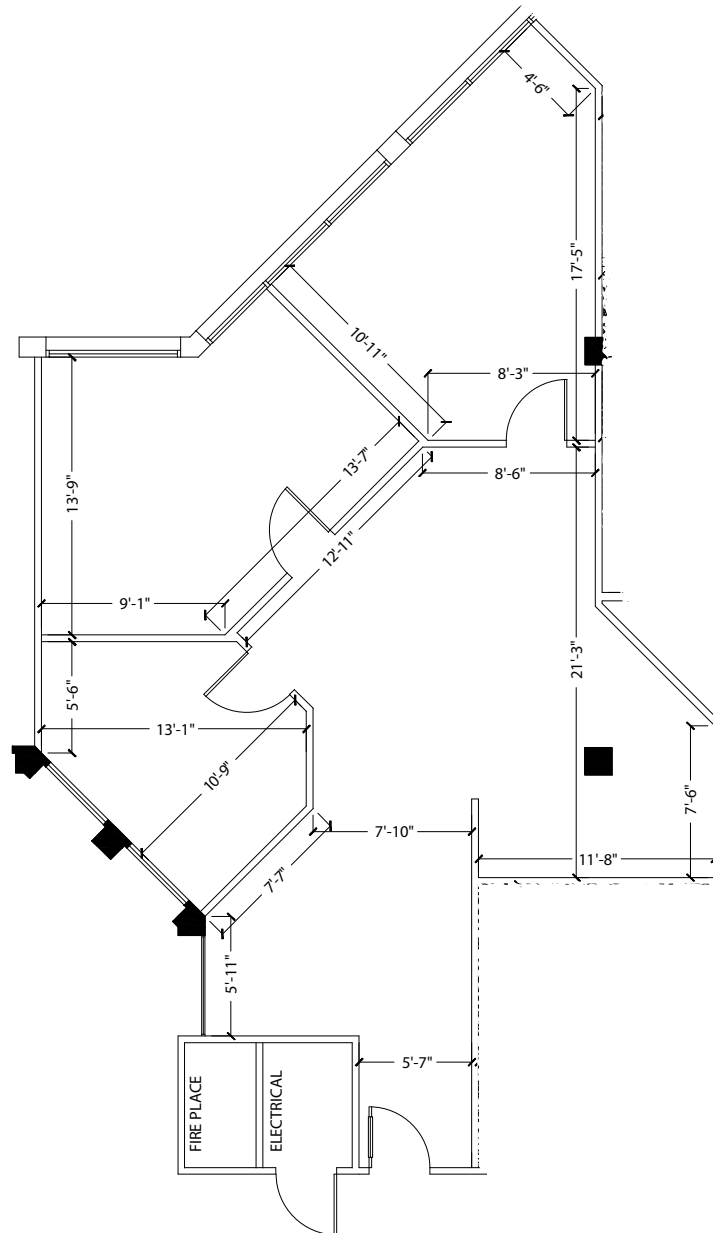
**SUITE 350 - 1,307 SF**



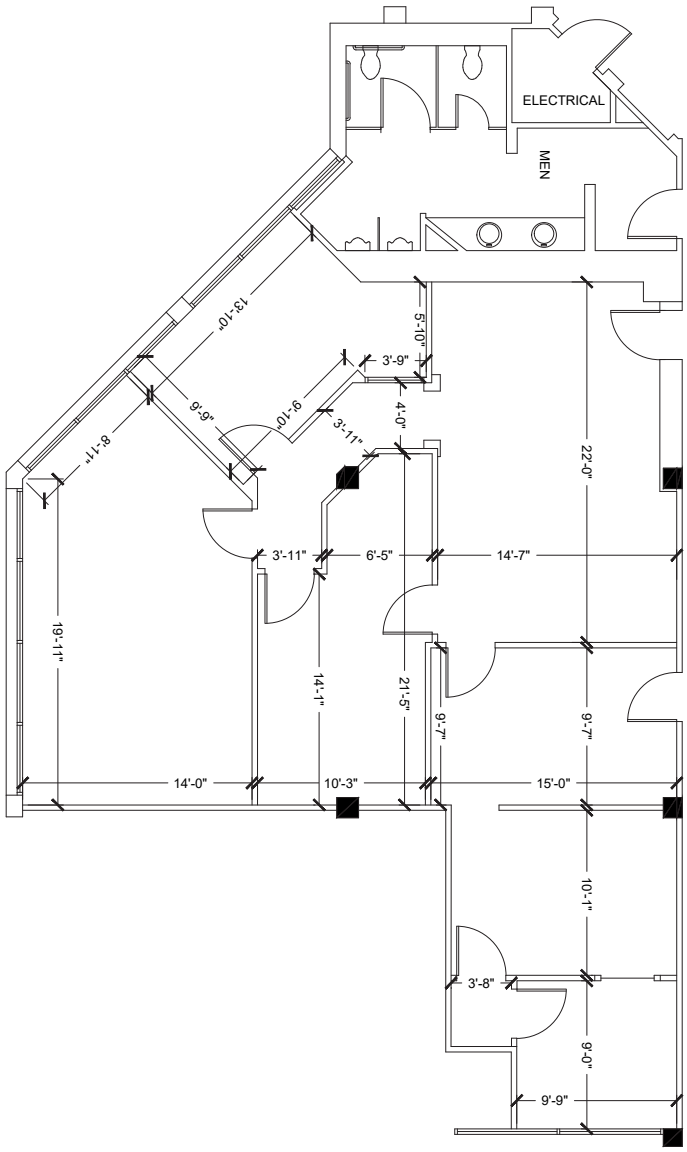
**SUITE 400 - 1,249 SF**



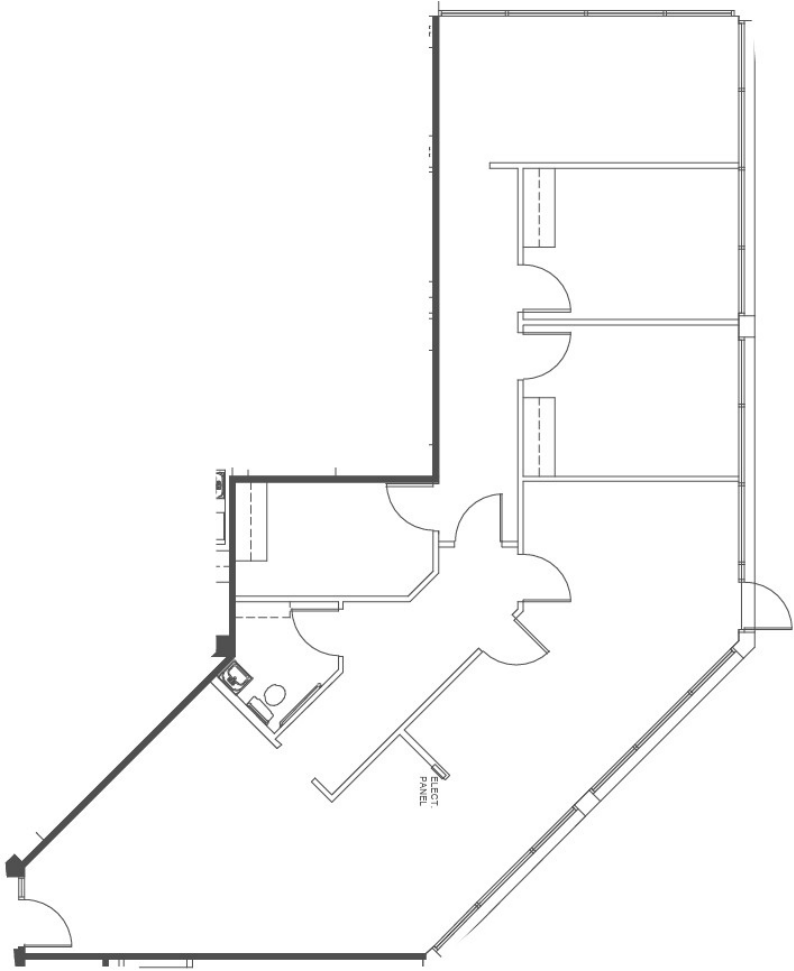
SUITE 850 - 1,324 SF



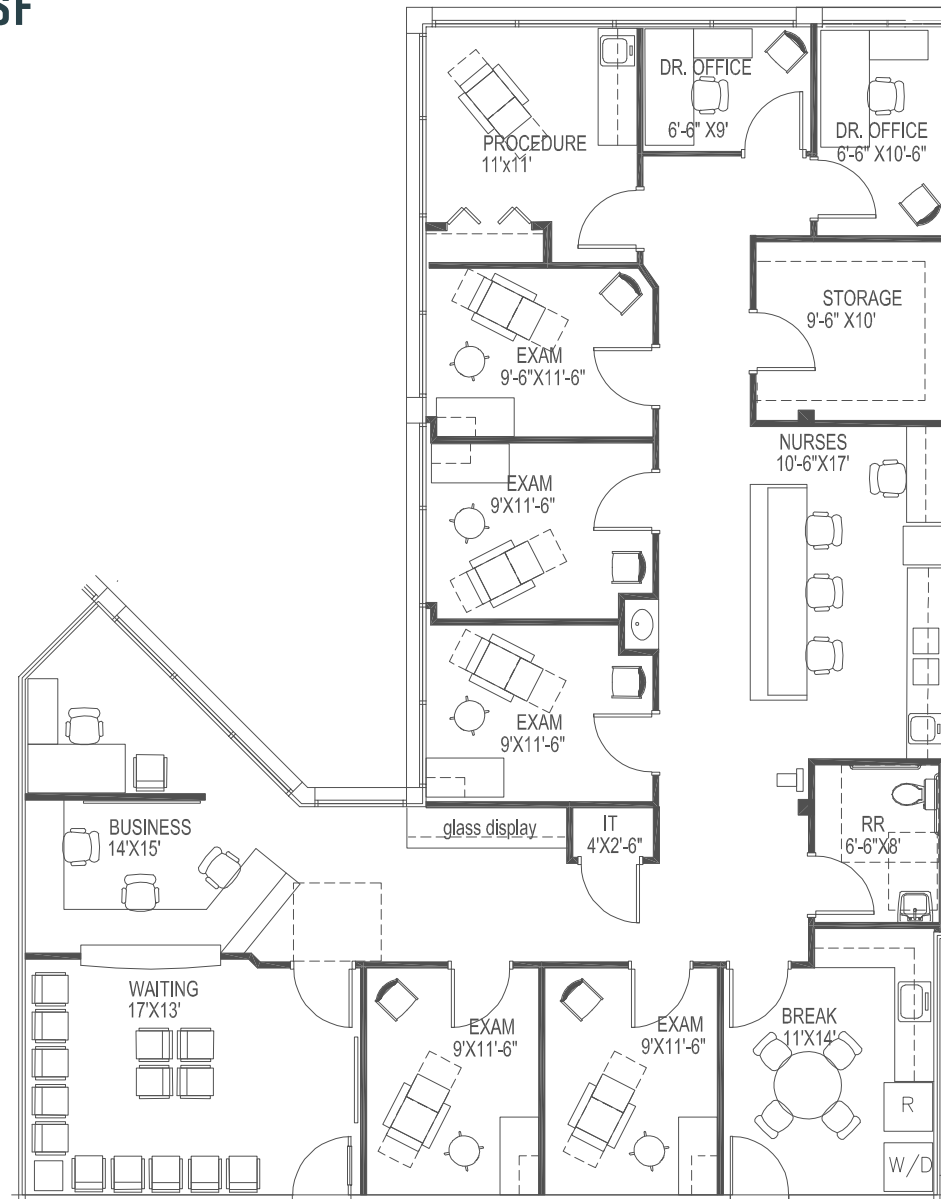
SUITE 100 - 1,809 SF

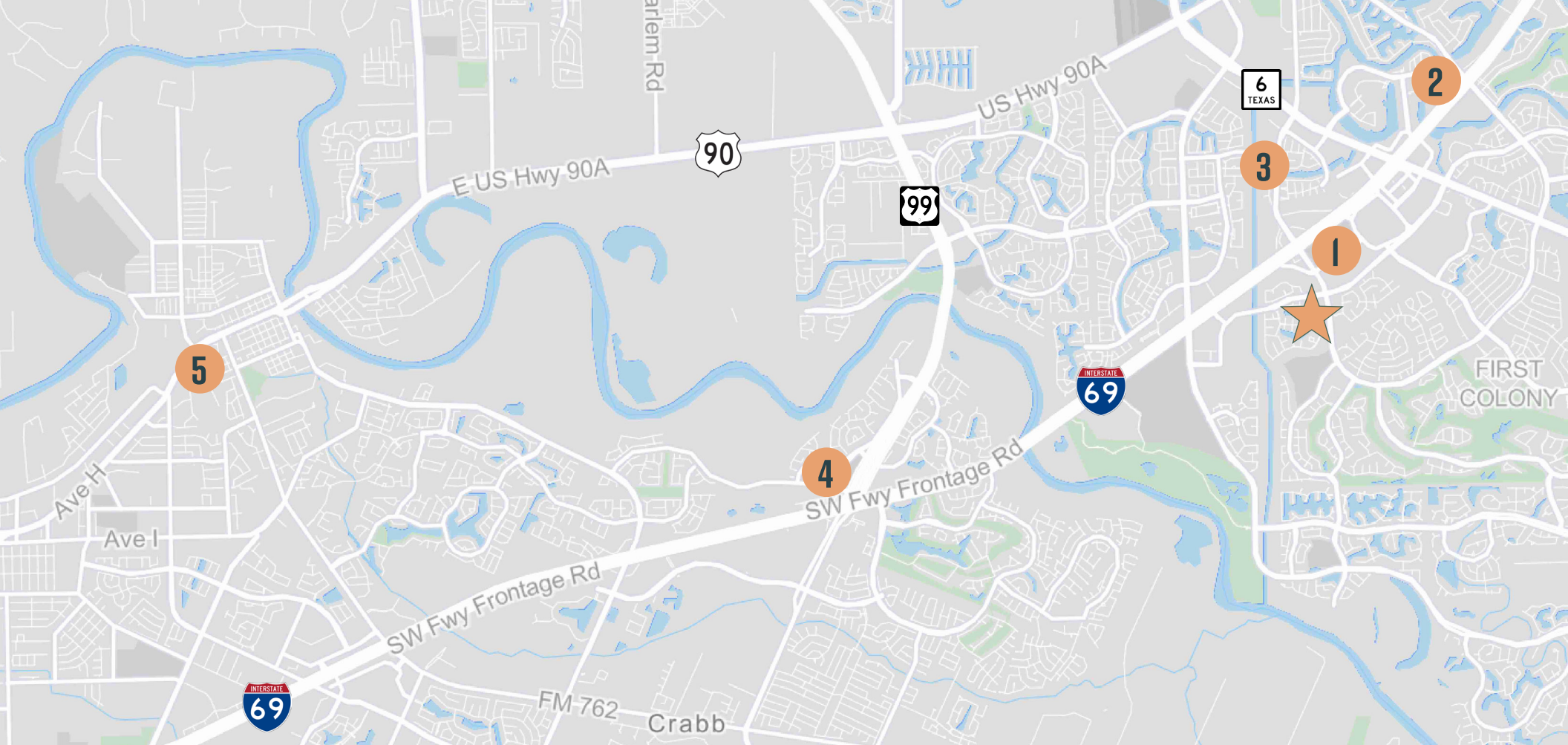


SUITE 450 - 2,007 SF



SUITE 103/400 - 2,777 SF










## STRATEGIC LOCATION

The Offices at Sweetwater is located within three miles of multiple major hospitals, ensuring easy reach to comprehensive health services

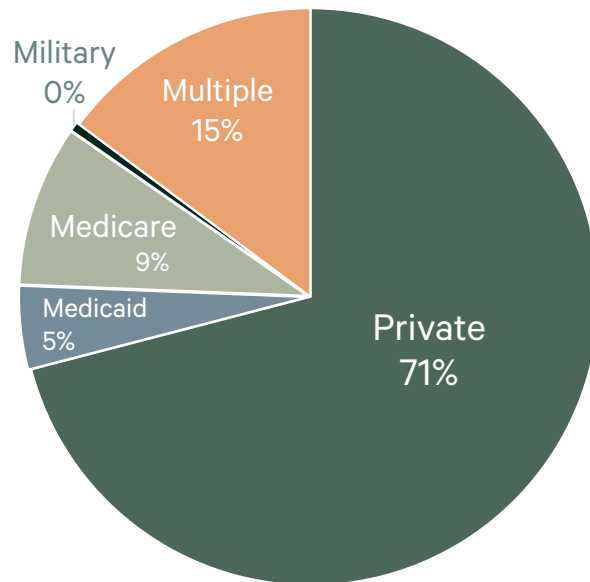
 THE OFFICES AT SWEETWATER

-  HOUSTON METHODIST SUGAR LAND HOSPITAL
-  ST LUKE'S HEALTH SUGAR LAND HOSPITAL
-  KINDRED HOSPITAL - SUGAR LAND
-  MEMORIAL HERMANN SUGAR LAND HOSPITAL
-  OAK BEND MEDICAL CENTER

# DEMOGRAPHICS

2025 Estimate	1 Mile	3 Miles	5 Miles
Population	9,716	72,729	191,868
Population - 5 Yr Projection	10,301	77,422	206,386
Median Age	45.2	44.1	41.3
Avg. Household Income	\$198,223	\$186,545	\$162,522

## INSURANCE MIX - 3 MILES





# THE OFFICES AT SWEETWATER

4645-4675 SWEETWATER BLVD. | SUGAR LAND, TX 77479

## CONTACTS

Pamela Sprouse  
Vice President  
+1 832 335 0277  
[pamela.sprouse@cbre.com](mailto:pamela.sprouse@cbre.com)

Danielle Parsons  
Associate  
+1 713 907 8905  
[danielle.parsons@cbre.com](mailto:danielle.parsons@cbre.com)

Annie Peretich  
Associate  
+1 317 688 1616  
[annie.peretich@cbre.com](mailto:annie.peretich@cbre.com)

**CBRE**

© 2026 CBRE, Inc. All rights reserved. This information has been obtained from sources believed reliable but has not been verified for accuracy or completeness. CBRE, Inc. makes no guarantee, representation or warranty and accepts no responsibility or liability as to the accuracy, completeness, or reliability of the information contained herein. You should conduct a careful, independent investigation of the property and verify all information. Any reliance on this information is solely at your own risk. CBRE and the CBRE logo are service marks of CBRE, Inc. All other marks displayed on this document are the property of their respective owners, and the use of such marks does not imply any affiliation with or endorsement of CBRE. Photos herein are the property of their respective owners. Use of these images without the express written consent of the owner is prohibited.