

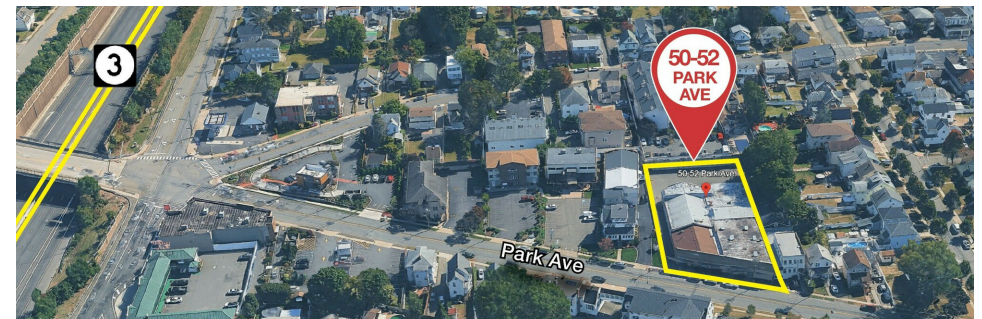


50-52 Park Avenue

Lyndhurst, New Jersey 07071

Property Highlights

- 20,000 SF Freestanding industrial building
- 14' Ceiling height
- Three drive in doors
- One drive-in door in front of building
- Two drive-in doors in rear of building
- Secure parking in rear of building
- Truck/van and car parking
- Approximately 25 cars
- Heavy power: Three phase
- Phase one and phase two are completed and the property is environmentally clean



For More Information

Dominic Fittizzi

O: 201 488 5800 x135

dfittizzi@naihanson.com



We obtained the information above from sources we believe to be reliable. However, we have not verified its accuracy and make no guarantee, warranty or representation about it. It is submitted subject to the possibility of errors, omissions, change of price, rental or other conditions, prior sale, lease or financing, or withdrawal without notice. We include projections, opinions, assumptions or estimates for example only, and they may not represent current or future performance of the property. You and your tax and legal advisors should conduct your own investigation of the property and transaction.

195 North Street, Suite 100
Teterboro, NJ 07608
201 488 5800 tel
naihanson.com

Population	1 Mile	3 Miles	5 Miles
Total Population	25,580	210,304	598,680
Average Age	42.0	39.4	39.4
Average Age (Male)	41.6	38.8	38.7
Average Age (Female)	43.1	40.0	40.1
Households & Income	1 Mile	3 Miles	5 Miles
Total Households	10,181	77,875	221,529
# of Persons per HH	2.5	2.7	2.7
Average HH Income	\$148,620	\$129,420	\$122,329
Average House Value	\$538,601	\$492,181	\$491,332

2023 American Community Survey (ACS)

