

For Lease in Culver City

High-Impact Retail

±9,000 SF

5299 SEPULVEDA BLVD, CULVER CITY, CA 90232



PATRICK SHEEKEY

Lic. 01290968

Phone: 310-293-2882

patrick@highlandpartnerscorp.com





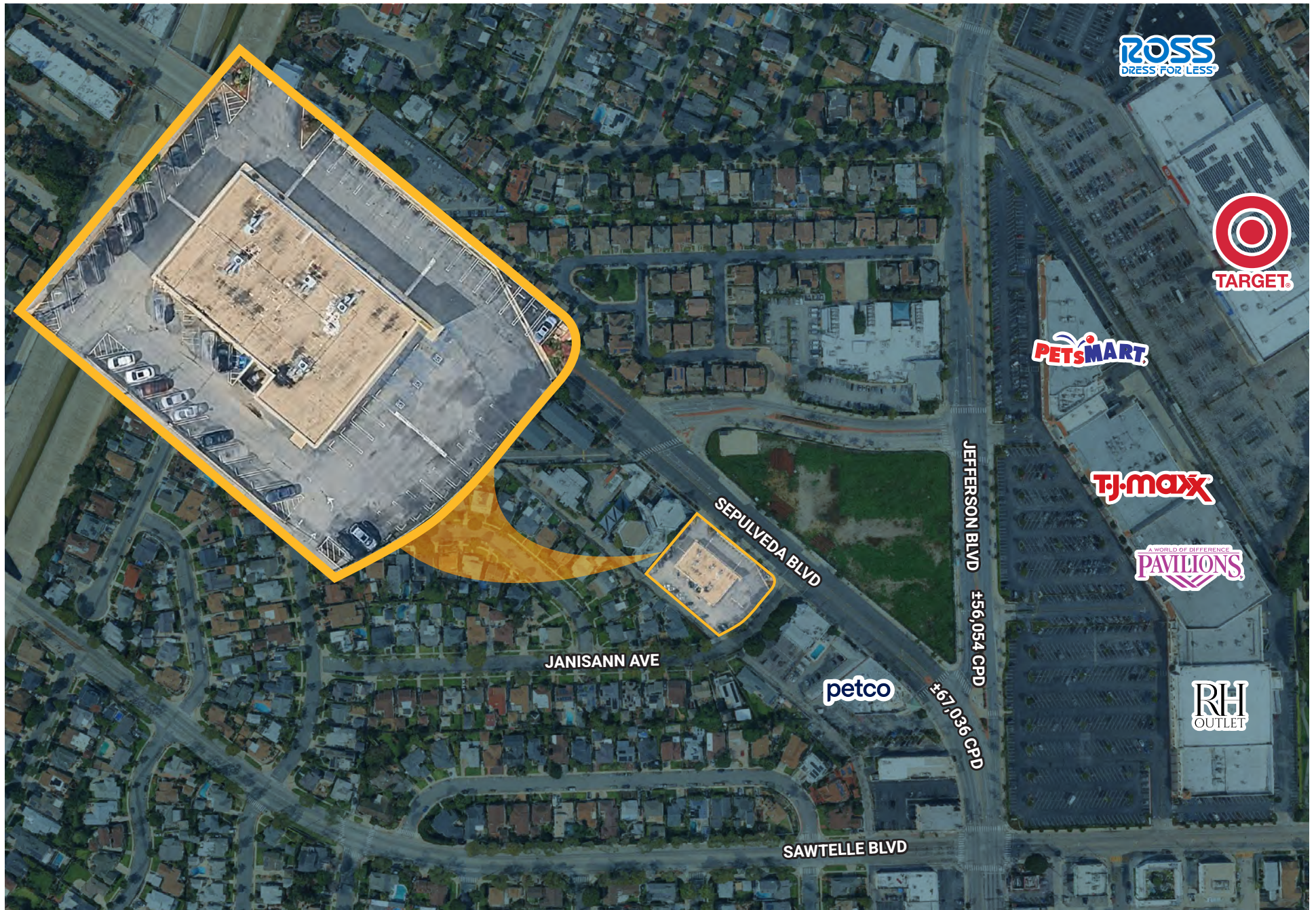
AVAILABLE

Building Size:	±9,000 SF
Land Size:	±42,123 SF
Parking:	±64 Spaces
Available:	30 days
Rent:	Call broker for details

FEATURES

- » **242' of Frontage** Sepulveda Blvd.
- » **7.11/1,000 SF** Parking Ratio
- » **67,000+ Cars Per Day**; immense brand visibility and passive “billboard” value.
- » **The Westfield Culver City (Fox Hills) Mall** sits just down the street, drawing millions of regional visitors annually.
- » Exceptional daytime demographic profile; **population of ±135,000 within 2 miles**
- » Immediate neighbors include high-frequency destinations like **Target, Sprouts, Home Depot, Ross, TJ Maxx, RH Outlet, Total Wine, Super King.**
- » **Multitude of uses allowed**, please check with Culver City planning department (MU-2 zoning)







PATRICK SHEEKEY
 Lic. 01290968
 Phone: 310-293-2882
 patrick@highlandpartnerscorp.com



©2026 | Highland Partners Corp. | The information being provided by Highland Partners Corp. and/or its sources is deemed reliable. While we have no reason to doubt its accuracy, we do not guarantee it. Any information, measurements, facts and actual drawings shown are approximate, subject to change, or withdrawal without notice and should be independently verified by you and may not be relied upon as a precise representation by this office. No warranties or representations are made as to the condition of the property or any hazards contained therein nor any to be implied. Logos are for identification purposes only and may be trademarks of their respective companies. 5299Sepulveda_BRO_v04 | 06 | 26