



FOR LEASE

Warehouse with Fenced Yard

3180 Meadow Lane
Eugene OR 97402

APPROXIMATELY 4,320 SQUARE FEET

- Located in West Eugene off of Roosevelt Blvd with easy access to Hwy 99
- Five bay doors
- Four 200 amp electrical panels
- Restroom
- Fully gated and fenced yard
- \$3,000 per month, modified gross

**Evans
Elder
Brown &
Seubert**

COMMERCIAL REAL ESTATE

CONTACT

Lilly Storment

lilly@eebcre.com

Stephanie Seubert

stephanie@eebcre.com

Jackson Seubert

jackson@eebcre.com

541.345.4860

Licensed in the State of Oregon.

Photographs

3180 Meadow Lane | Eugene OR 97402

Evans
Elder
Brown &
Seubert

COMMERCIAL REAL ESTATE

CONTACT

**Lilly
Storment**

lilly@eebcre.com

**Stephanie
Seubert**

stephanie@eebcre.com

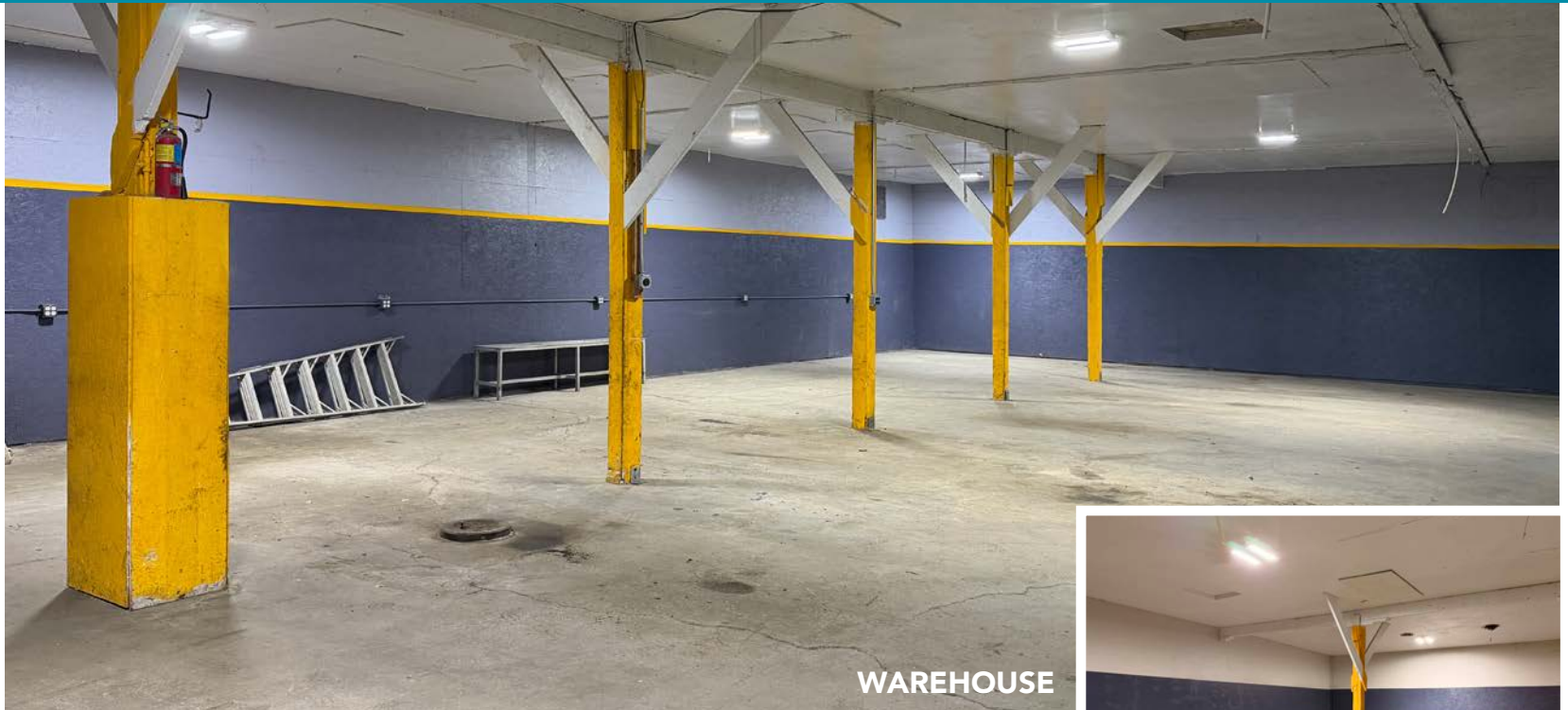
**Jackson
Seubert**

jackson@eebcre.com

541.345.4860

101 East Broadway
Suite #101
Eugene, OR 97401

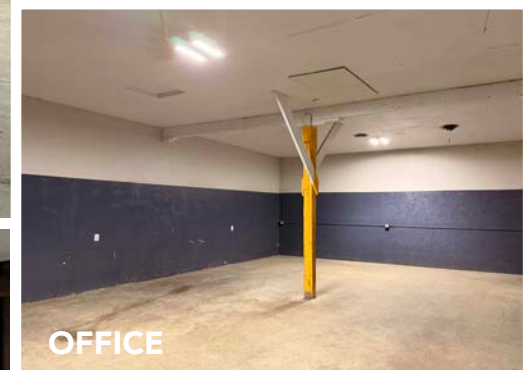
Licensed in the
State of Oregon.



WAREHOUSE



SLIDING BAY DOORS



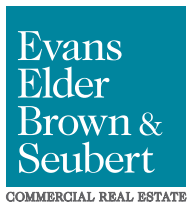
OFFICE



(4) 200A PANELS

Location

3180 Meadow Lane | Eugene OR 97402



CONTACT

541.345.4860

Lilly Storment
lilly@eebcre.com

Stephanie Seubert
stephanie@eebcre.com

Jackson Seubert
jackson@eebcre.com