



Warehouse/Shop/ Sales Service

6015 POWER INN RD, SACRAMENTO, CA

For Lease

Suite K

±6,000 SF with *±3,120 SF office/showroom

*All or portion of the existing improvements
can be removed

BILL NIETHAMMER
916.751.3639
bill.niethammer@kidder.com
LIC N° 00925770

JACK NIETHAMMER
916.607.6101
jack.niethammer@kidder.com
LIC N° 02205255



6015
POWER INN RD
AVAILABLE
SUITE K
±6,000 SF

6043-6048
POWER INN RD

6001
POWER INN RD
BLDG 1

6001
POWER INN RD
BLDG 5

6001
POWER INN RD
BLDG 7

6001
POWER INN RD
BLDG 10

8180
INDUSTRIAL PKY

8160
INDUSTRIAL PKY

6083
POWER INN RD

PARCEL G

South Park Industrial Complex

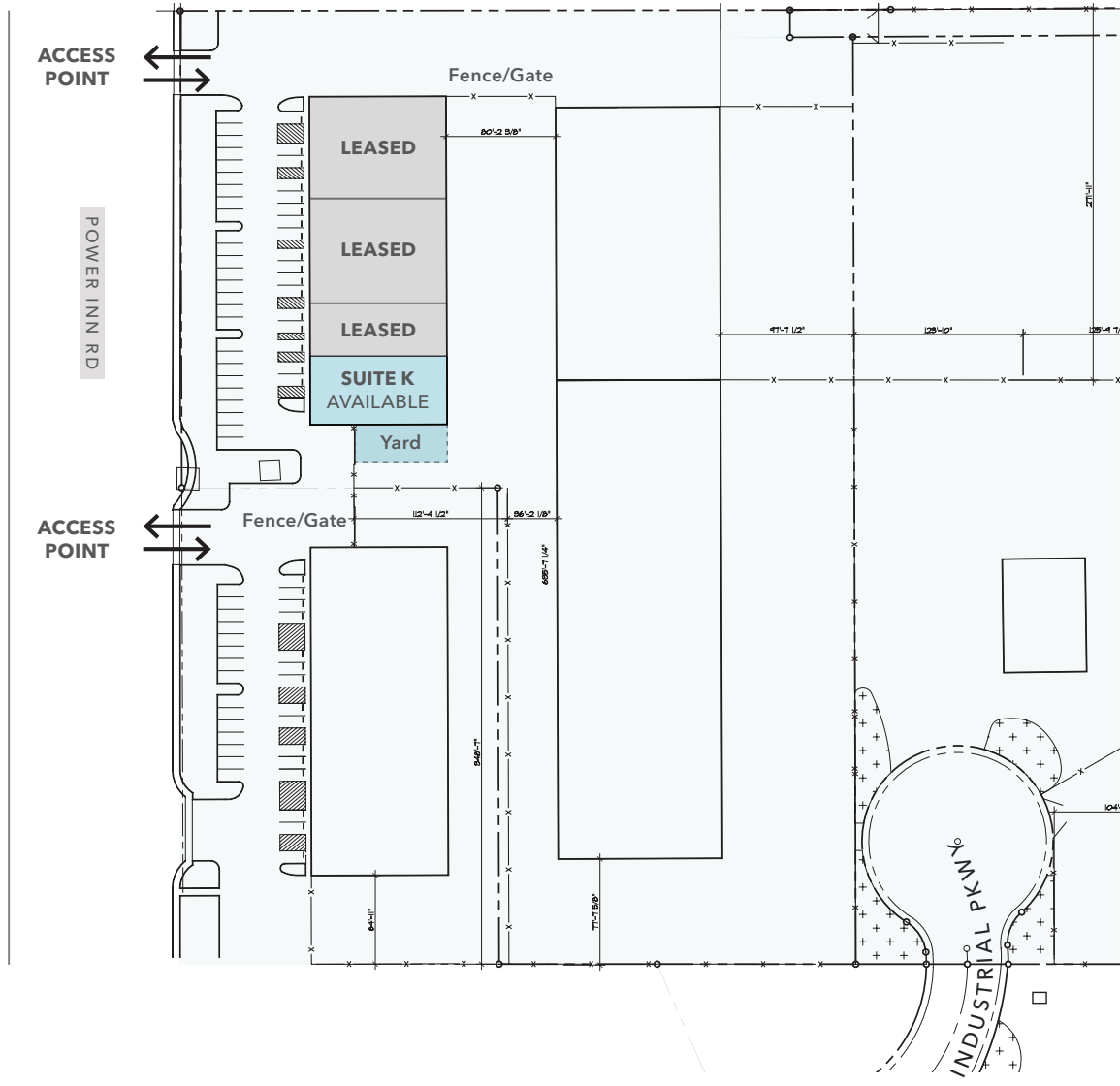
Power Inn Submarket

SPACE AVAILABILITY

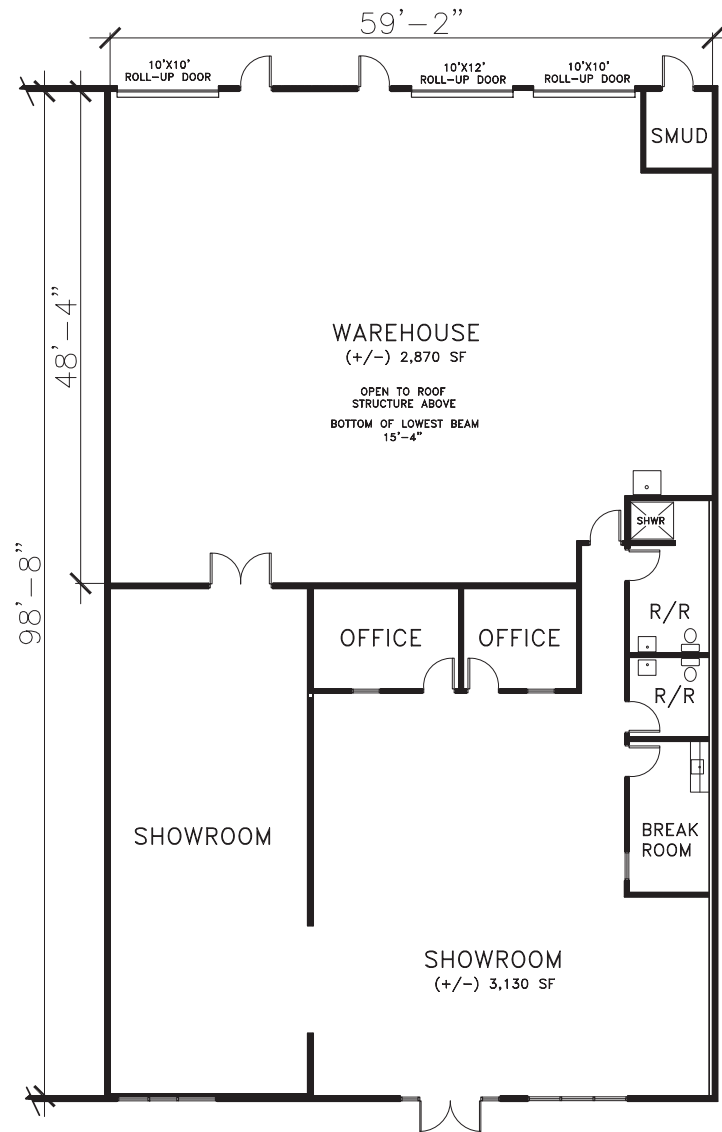
Suite #	Total SF	Office SF	Rent	NNN	Date Available
SUITE K	6,000	3,120	\$1.00	\$0.17 PSF/mo	April 2026



SITE PLAN & ACCESS



FLOOR PLAN - AS BUILT

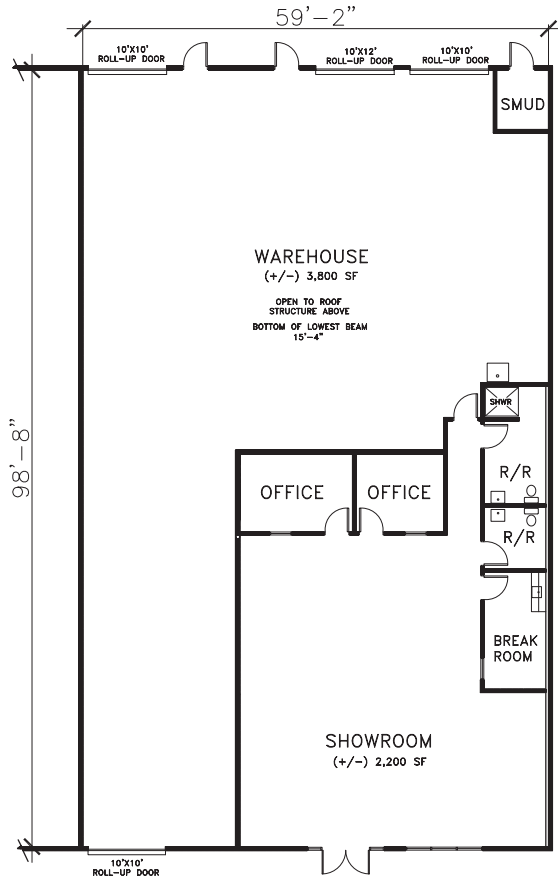


Basic Building Features

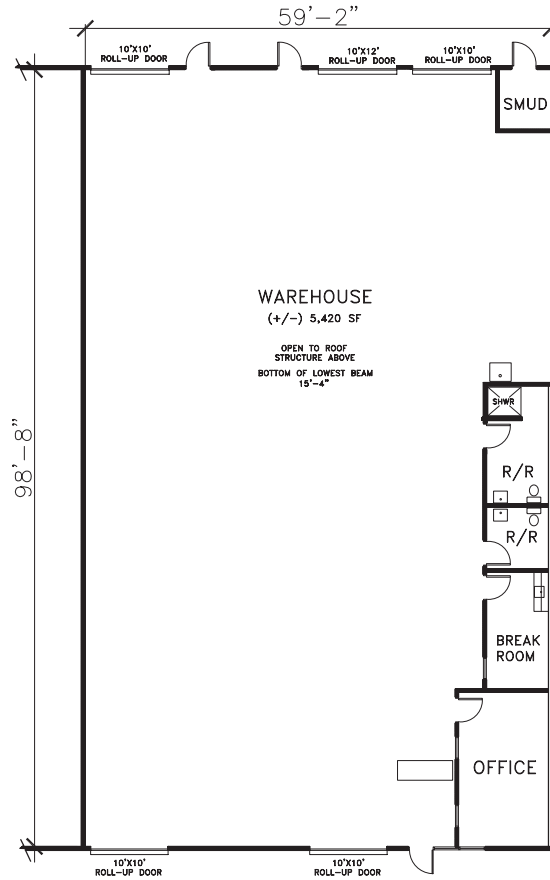
- ±6,000 SF with *±3,120 SF office/ Showroom with 2 restrooms, breakroom
 - Owner will modify/demo & improve to suit
 - Option A: ±2,200 SF showroom/office
 - Option B: ±580 SF office
 - Option C: ±760 SF office/showroom
 - (2) 10'x10', (1) 10'x12' grade level doors, (2) additional 10'x10' doors possible per plan
 - Fully Sprinklered
 - High Efficiency Lighting throughout
 - Clear Height ±16'
 - Zoned M-1S
 - Secured Yard possible
 - 24/7 on-site security patrolled
 - Monument signage possible
 - Abundant Parking
 - Electrical - 200amp, 120/208 3 phase
- *All or a portion of the existing improvements can be removed

FLOOR PLAN - OPTIONS

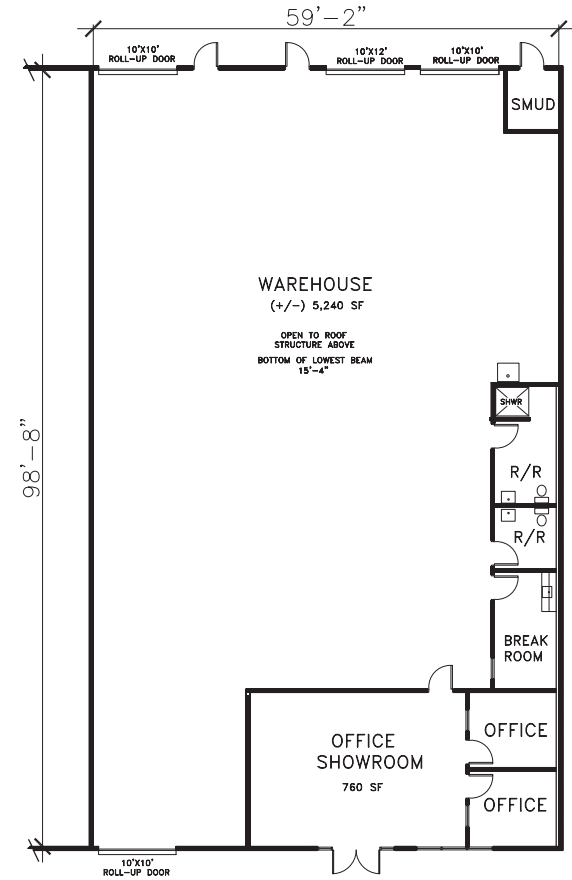
OPTION A



OPTION B

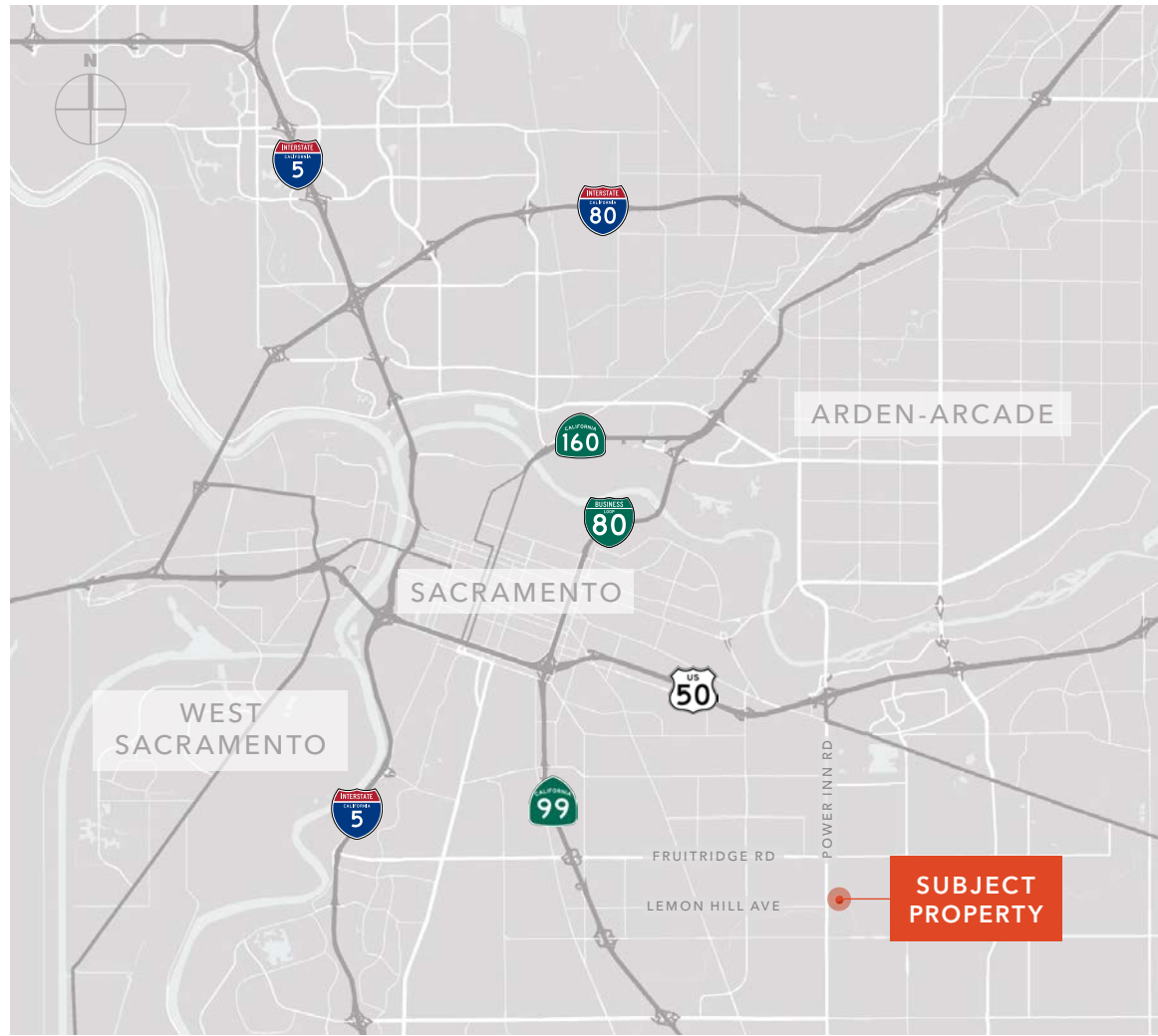
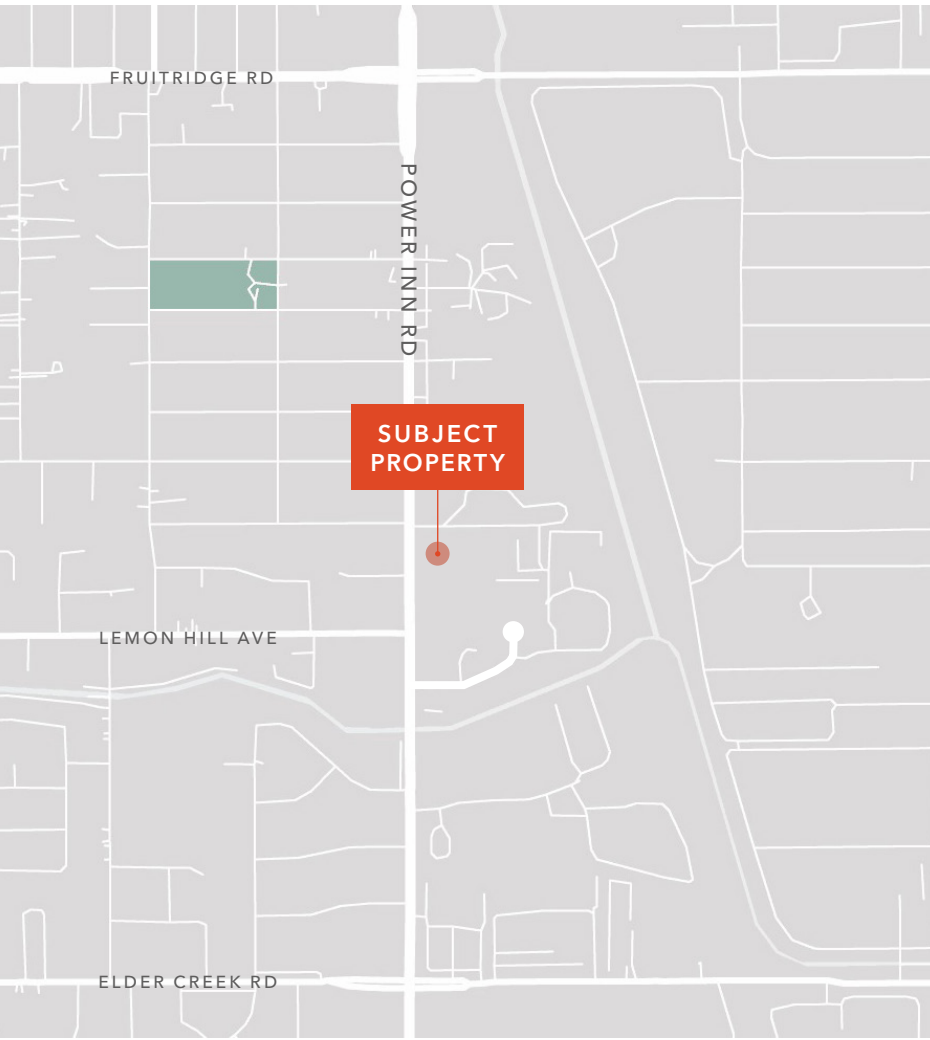


OPTION C



LOCATION

Power Inn Submarket, Sacramento



Exclusively listed by

BILL NIETHAMMER

916.751.3639

bill.niethammer@kidder.com

LIC N° 00925770

JACK NIETHAMMER

916.607.6101

jack.niethammer@kidder.com

LIC N° 02205255

KIDDER.COM