

Hook Blvd - 64 Residential Lots
Victorville, CA 92392

Summary

Details



ASKING
\$ UNDISCLOSED



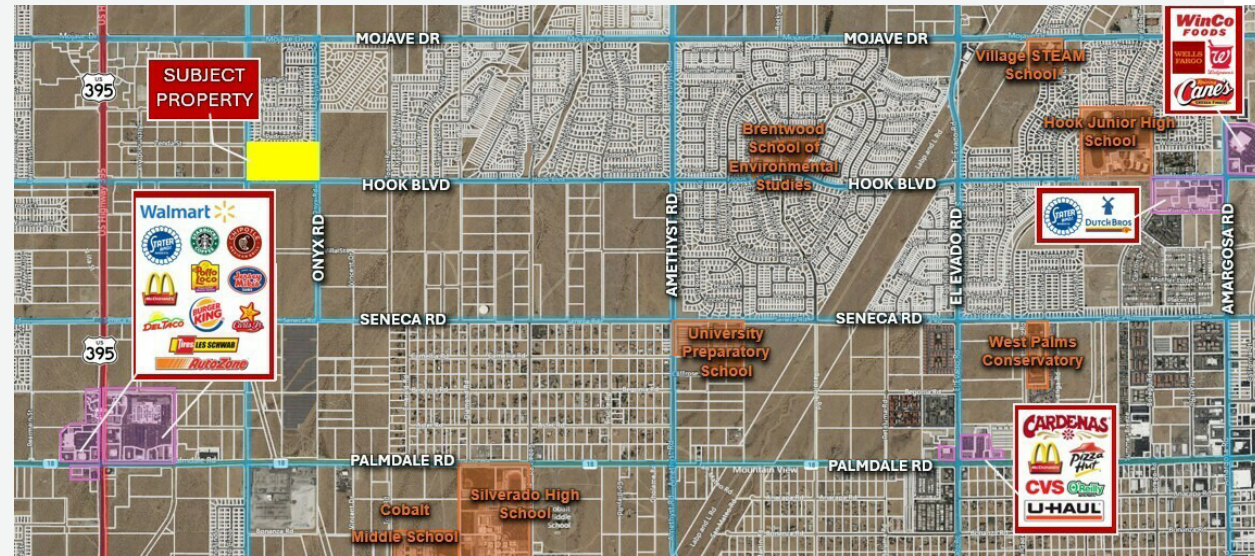
SIZE
±17.82 ACRES



ZONING
Single Family Residential



APN
3135-381-01



Property Description

64 lots for sale on Hook Blvd in Victorville; APN: 3135-381-01. Tentative Tract Map 20789 is in process with the city and the current application can be assumed by new developers. Water, sewer, gas, and power are all to site and ready to be stubbed. This site is adjacent to the Crossroads at 395 & Adelanto Town Center, providing such amenities for future residents as: Walmart Supercenter, Stater Bros Market, Dollar Tree, BofA, US Bank, AutoZone Auto Parts, Walgreens, CVS Pharmacy, Starbucks, Dutch Bros, McDonalds, Dennys, Chipotle, Del Taco, Panda Express, Jersey Mike's, Taco Bell, and more. Residents will live just south of Mojave Dr, a town arterial connecting to Highway 395 and Interstate 15 for accessing the High Desert and beyond. Victorville's demand for housing continues to surge with a growing population, and projections estimate that approximately 8,000 new units are required over the next 4 years. Buyer to verify all information contained herein. Agent and their representatives are not responsible for the accuracy of these claims.

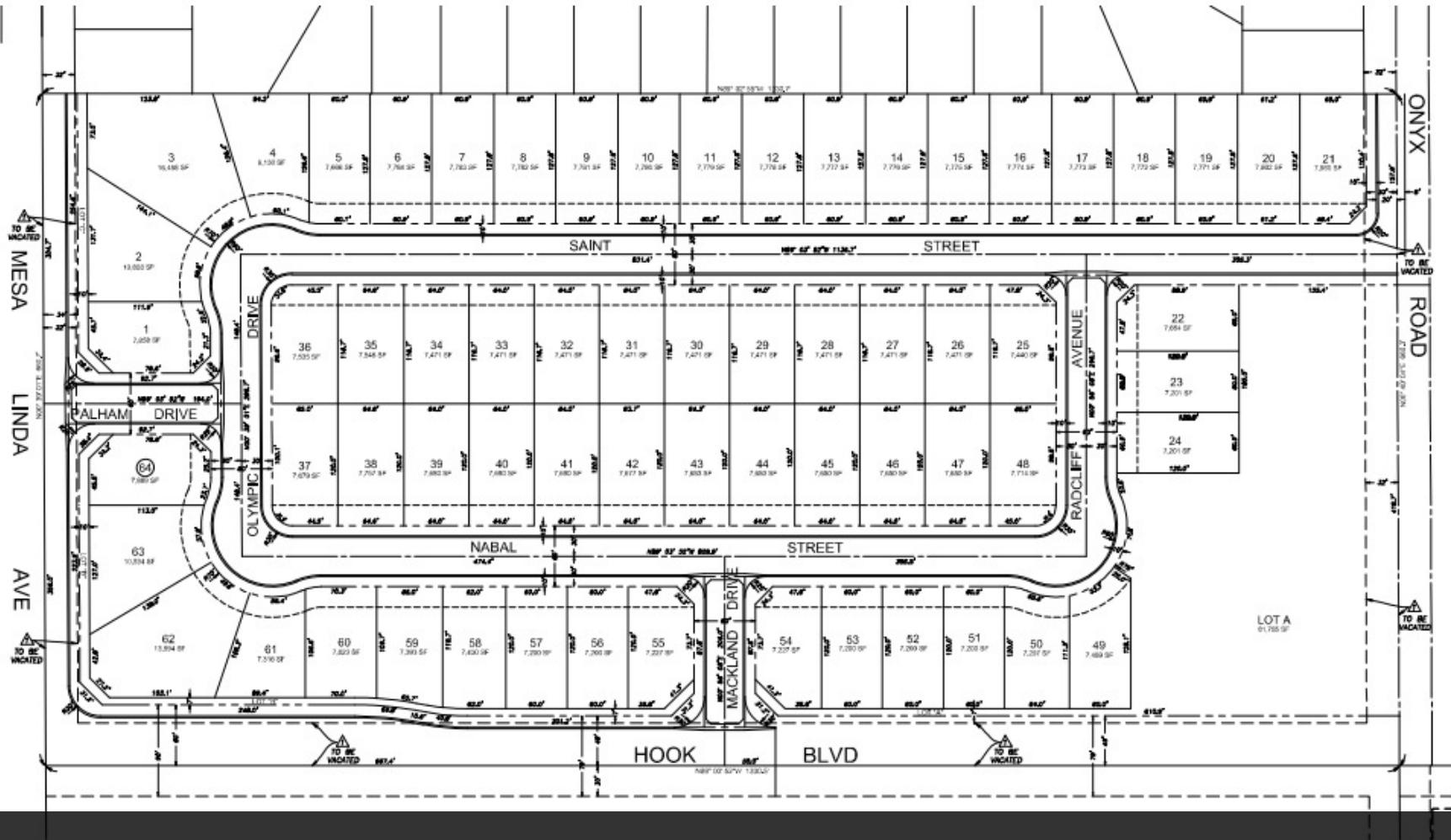
Tentative Site Plan

IN THE CITY OF VICTORVILLE, COUNTY OF SAN BERNARDINO, STATE OF CALIFORNIA,

TENTATIVE TRACT MAP 20789

THE SOUTH ONE-HALF OF THE SOUTHWEST ONE-QUARTER OF THE NORTHEAST ONE-QUARTER OF SECTION 15,
TOWNSHIP 5 NORTH, RANGE 5 WEST, SAN BERNARDINO MERIDIAN, IN THE CITY OF VICTORVILLE, COUNTY OF
SAN BERNARDINO, STATE OF CALIFORNIA, ACCORDING TO THE RECORDED PLAT THEREOF.

UNITED ENGINEERING GROUP CA., INC JANUARY 2026



Meet the Team



Mehdi Mostaedi, ALC

Executive Managing Director

Direct: 760.780.4210 **Cell:** 760.559.6807
mmostaedi@naicapital.com

CalDRE #01392527



Jonathan Pollak

Senior Associate

Direct: 760.780.4217 **Cell:** 971.717.1738
jpollak@naicapital.com

CalDRE #02106603

SUBJECT
PROPERTY

Hook Blvd

Victorville, CA 92392



©NAI Capital Commercial, Inc. Content in this document may include AI generated or altered text, images and/or analysis. No warranty, express or implied, is made as to the accuracy of the information contained herein. This information is submitted subject to errors, omissions, change of price, rental or other conditions, withdrawal without notice, and is subject to any special listing conditions imposed by our principals. Cooperating brokers, buyers, tenants and other parties who receive this document should not rely on it, but should use it as a starting point of analysis, and should independently confirm the accuracy of the information contained herein through a due diligence review of the books, records, files and documents that constitute reliable sources of the information described herein. Unedited images viewable at naicapital.com | Cal DRE Lic #02130474

Mehdi Mostaedi, ALC
Executive Managing Director
760.780.4210
mmostaedi@naicapital.com
CalDRE #01392527

Jonathan Pollak
Senior Associate
760.780.4217
jpollak@naicapital.com
CalDRE #02106603

NAI Capital
COMMERCIAL REAL ESTATE SERVICES. WORLDWIDE