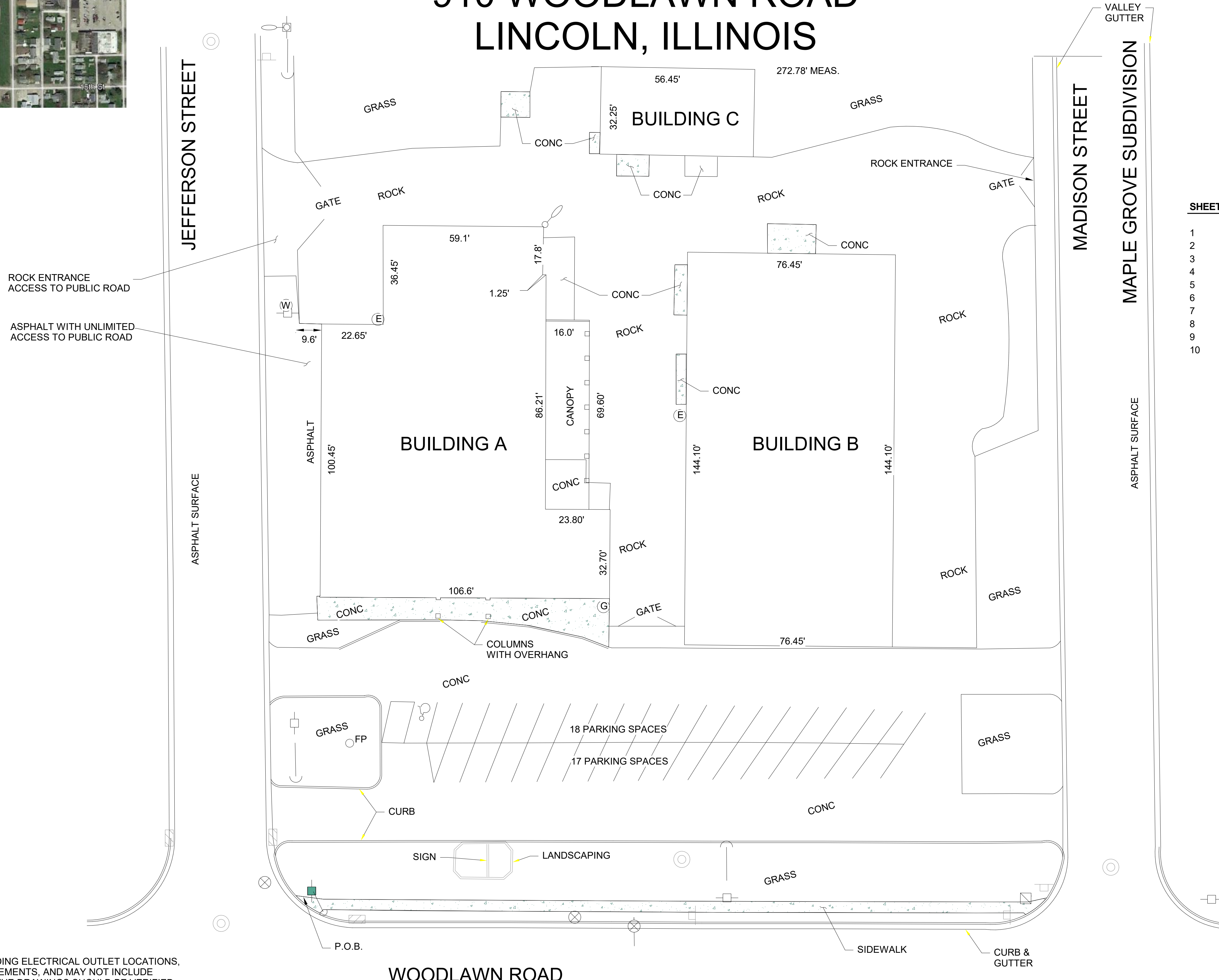


# FLOOR PLANS FOR BUILDINGS A, B, & C

## HUNDMAN LUMBER CO. 910 WOODLAWN ROAD LINCOLN, ILLINOIS



LOCATION



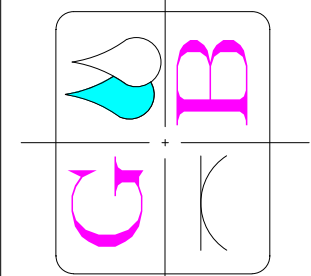
ROCK ENTRANCE  
ACCESS TO PUBLIC ROAD

ASPHALT WITH UNLIMITED  
ACCESS TO PUBLIC ROAD

### INDEX OF SHEETS

SHEET NO.	SHEET DESCRIPTION
1	COVER SHEET
2	BUILDING A
3	BUILDING A - PLAN VIEW
4	BUILDING A - ELEVATION VIEWS
5	BUILDING A - ELEVATION VIEWS
6	BUILDING B
7	BUILDING B - PLAN VIEW
8	BUILDING B - ELEVATION VIEWS
9	BUILDING B - ELEVATION VIEWS
10	BUILDING C

GREENE & BRADFORD, INC.  
CONSULTING ENGINEERS  
OF SPRINGFIELD  
3501 CONSTITUTION DRIVE  
SPRINGFIELD, ILLINOIS 62711  
PROFESSIONAL DESIGN FIRM NO. 184-001179  
PROFESSIONAL ENGINEERING CORPORATION  
(217) 793-8844, 793-6227



COVER SHEET

HUNDMAN LUMBER CO.  
910 WOODLAWN ROAD  
LINCOLN, ILLINOIS

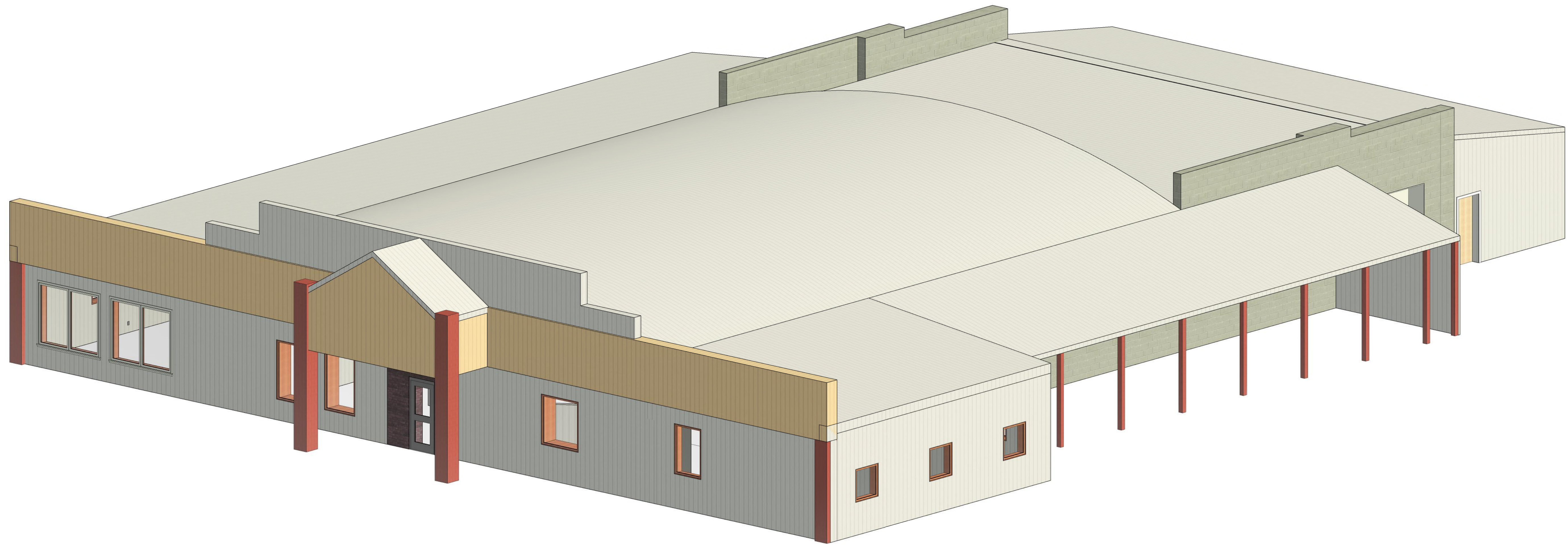
PROJ. NO.	20760.01
FIELD BOOK	PLOT SCALE 1" = 20'-0"
COMPUTER FILE NO.	
SHEET NO.	1

BELL J:\20760 LDC Properties - Recertification of ALL DRAWINGS\Building Model\20760.01-Full.rvt  
 7/28/2020 9:47:26 AM

**NOTE:**  
ALL DIMENSIONS AND RELATED INFORMATION, INCLUDING ELECTRICAL OUTLET LOCATIONS, WERE OBTAINED VIA FIELD INSPECTION AND MEASUREMENTS, AND MAY NOT INCLUDE COMPLETE INFORMATION. INFORMATION SHOWN ON THE DRAWINGS SHOULD BE VERIFIED.

SCALE IS FOR PAPER SIZE: 24" X 36"  
PRINTED ON: 7/28/2020 9:47:26 AM

# BUILDING A - CONCRETE BLOCK & METAL BUILDING



**NOTE:**  
 ALL DIMENSIONS, ELEVATIONS WERE OBTAINED VIA FIELD INSPECTION AND MEASUREMENTS, AND MAY NOT INCLUDE COMPLETE INFORMATION. WINDOWS AND DOORS ARE A VISUAL REPRESENTATION BASED ON THESE MEASUREMENTS, AND MAY NOT MATCH THE MAKE AND MODEL OF THOSE FOUND IN THE REAL WORLD. INFORMATION SHOWN ON THE DRAWINGS SHOULD BE FIELD VERIFIED.

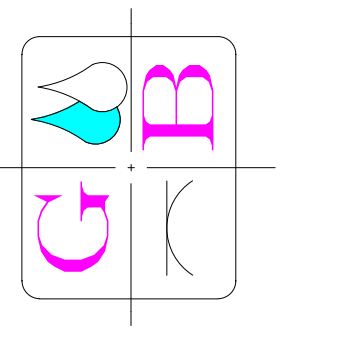
SCALE IS FOR PAPER SIZE: 24" X 36"  
 PRINTED ON: 7/28/2020 9:47:40 AM

j:\20760 LDC Properties - Recertification of ALTA\DRAWINGS\Building Model\20760.01-Full.rvt  
 BELL

ISSUED	BY	DATE

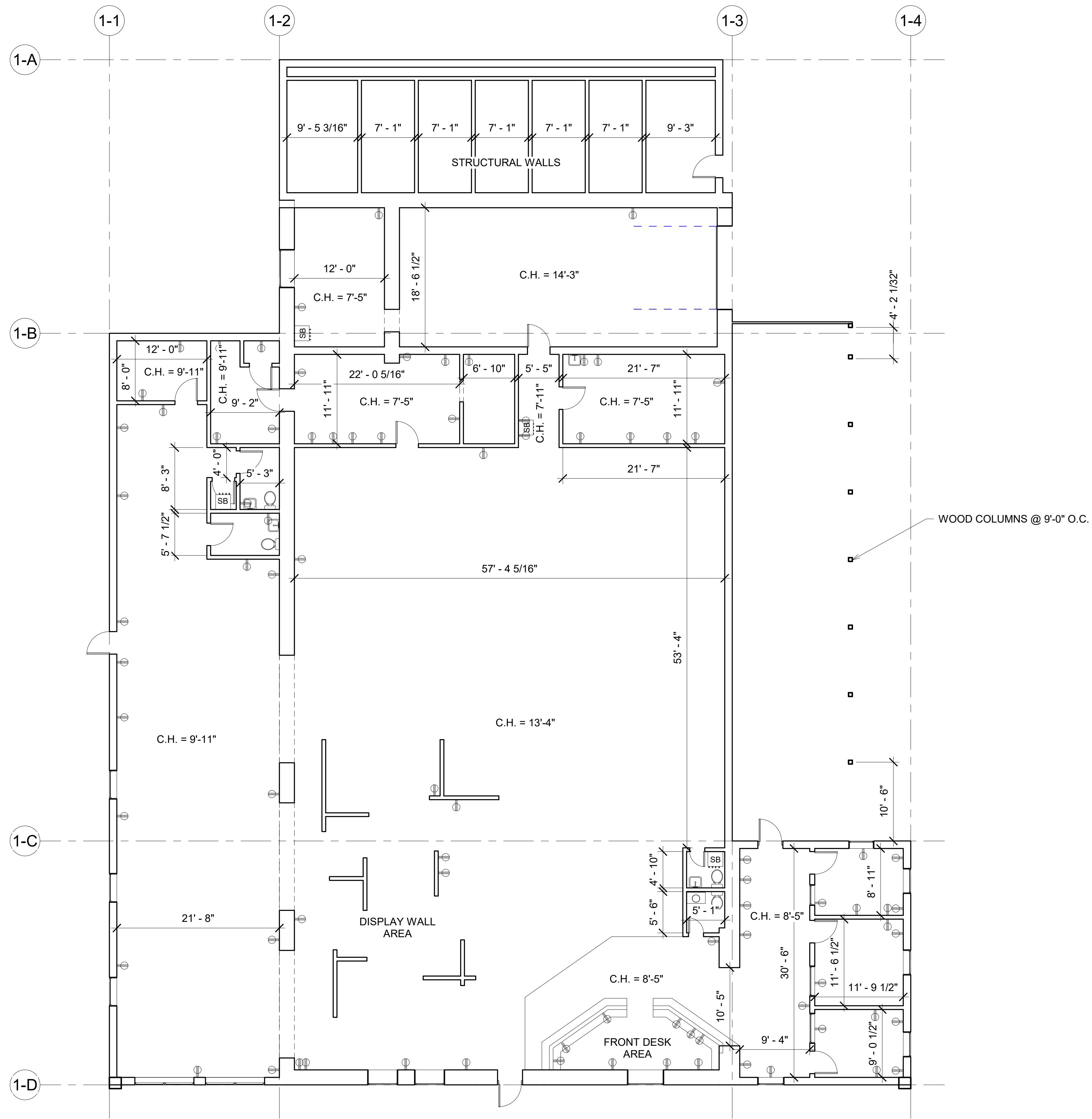
ISSUED	DATE	DESIGNED	DRAWN	CHECKED	APPROVED
	7/28/2020	BELL	BELL	SYED	

**GREENE & BRADFORD, INC.**  
 CONSULTING ENGINEERS  
 OF SPRINGFIELD  
 3501 CONSTITUTION DRIVE  
 SPRINGFIELD, ILLINOIS 62711  
 PROFESSIONAL DESIGN FIRM NO. 184-001179  
 PROFESSIONAL ENGINEERING CORPORATION  
 (217) 793-8844, 793-6227



**BUILDING A**  
 HUNDMAN LUMBER CO.  
 910 WOODLAWN ROAD  
 LINCOLN, ILLINOIS

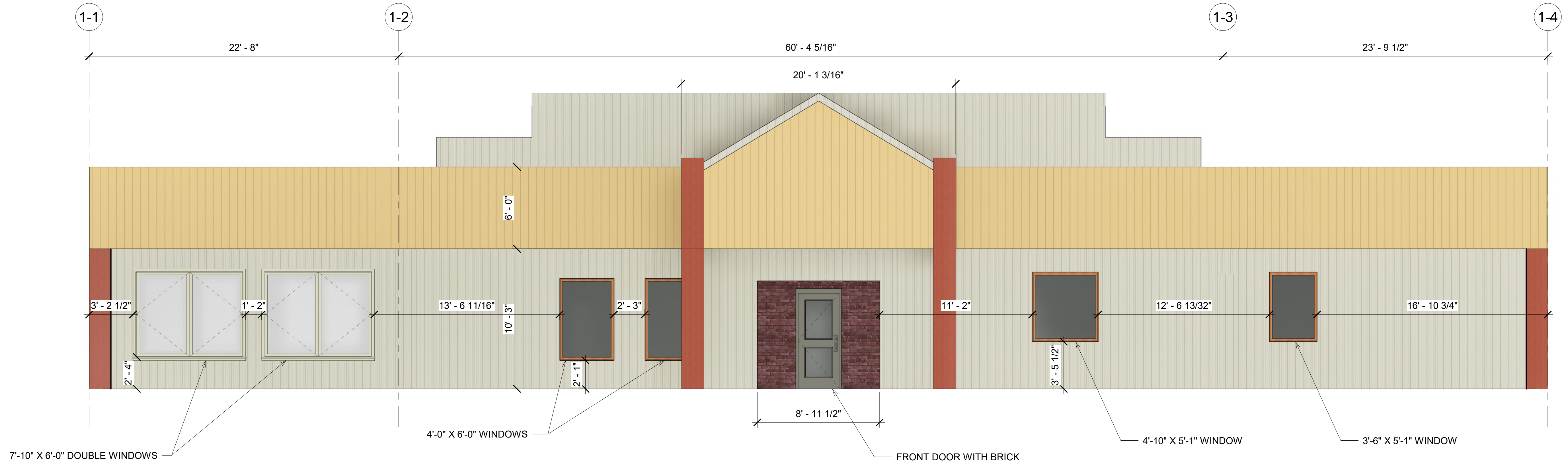
PROJ. NO.	20760.01
FIELD BOOK	X
PLOT SCALE	
COMPUTER FILE NO.	
SHEET NO.	2



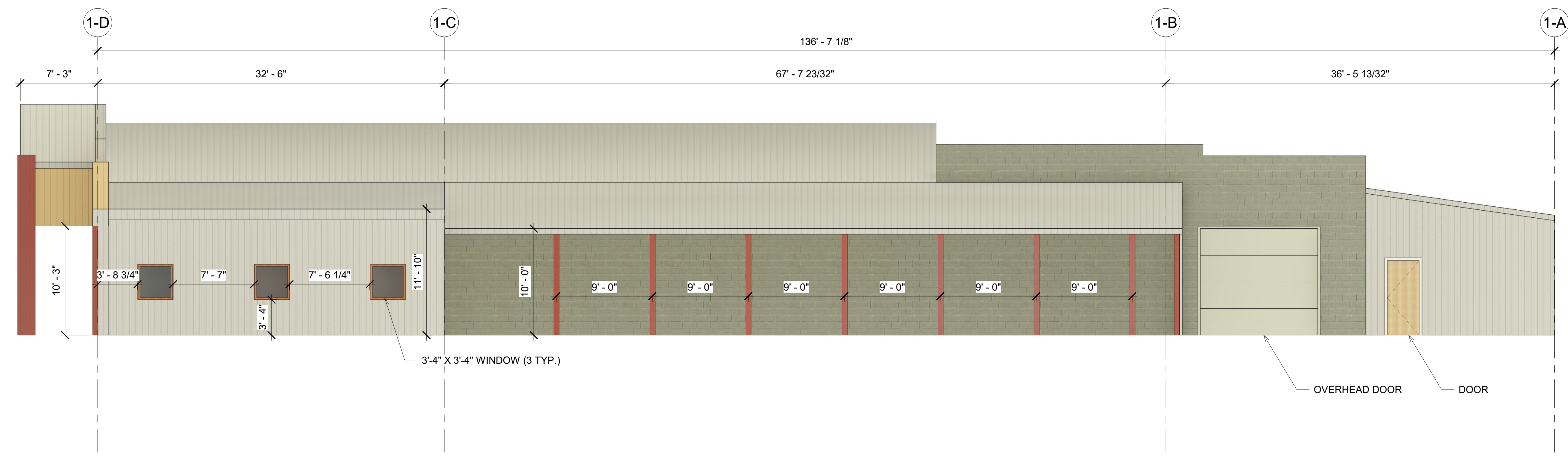
1 Building A Floor Plan - Concrete Block & Metal Building  
1/8" = 1'-0"

**LEGEND:**  
 C.H. = CEILING HEIGHT  
 SB = BREAKER BOX/SWITCH BOARD  
 = ELECTRIC OUTLET

ISSUED	BY	DATE
ISSUED		
DATE	DESIGNED	DRAWN
7/28/2020	BELL	BELL
CHECKED	SYED	APPROVED
<p><b>GREENE &amp; BRADFORD, INC.</b>                  CONSULTING ENGINEERS                  OF SPRINGFIELD                  3501 CONSTITUTION DRIVE                  SPRINGFIELD, ILLINOIS 62711                  PROFESSIONAL DESIGN FIRM NO. 184-001179                  PROFESSIONAL ENGINEERING CORPORATION                  (217) 793-8844, 793-6227</p>		
<p><b>BUILDING A - PLAN VIEW</b></p>		
<p><b>HUNDMAN LUMBER CO.</b>                  910 WOODLAWN ROAD                  LINCOLN, ILLINOIS</p>		
PROJ. NO.	20760.01	
FIELD BOOK	PLOT SCALE	
X	1/8" = 1'-0"	
COMPUTER FILE NO.		
SHEET NO.	3	



1 Building A - South  
1/4" = 1'-0"



3 Building A - East  
3/16" = 1'-0"

ISSUED	BY	DATE
ISSUED		
DATE	DESIGNED	DRAWN
7/28/2020	BELL	BELL
	CHECKED	SYED
	APPROVED	

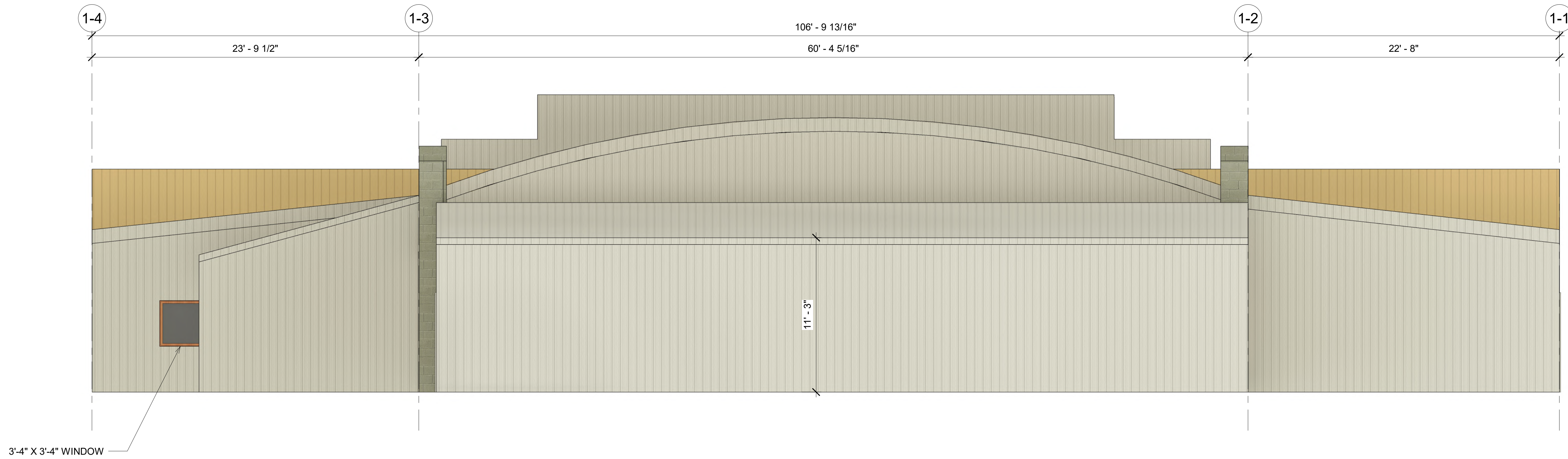
**GREENE & BRADFORD, INC.**  
CONSULTING ENGINEERS  
OF SPRINGFIELD  
9501 CONSTITUTION DRIVE  
SPRINGFIELD, ILLINOIS 62711  
PROFESSIONAL DESIGN FIRM NO. 184-001179  
PROFESSIONAL ENGINEERING CORPORATION  
(217) 793-8844, 793-6227

**BUILDING A - ELEVATION VIEWS**

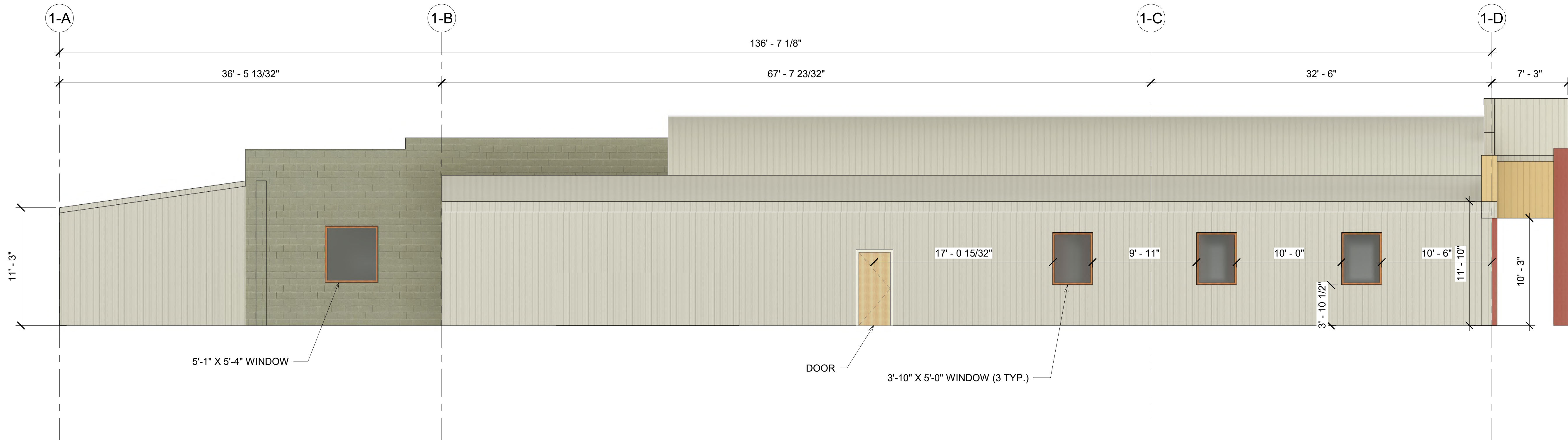
**HUNDMAN LUMBER CO.**  
910 WOODLAWN ROAD  
LINCOLN, ILLINOIS

PROJ. NO. 20760.01  
FIELD BOOK X PLOT SCALE As indicated  
COMPUTER FILE NO.  
SHEET NO. 4

BELL J:\20760 LDC Properties - Recertification of ALTA\DRAWINGS\Building Model\20760.01-Full.rvt



① Building A - North  
1/4" = 1'-0"



② Building A - West  
3/16" = 1'-0"

BELL J:\20760 LDC Properties - Recertification of ALTA DRAWINGS\Building Model\20760.01-Full.rvt

SCALE IS FOR PAPER SIZE: 24" X 36"  
PRINTED ON: 7/28/2020 9:48:07 AM

ISSUED	BY	DATE	ISSUED	BY	DATE
7/28/2020			DESIGNED	DRAWN	CHECKED
			BELL	SYED	APPROVED

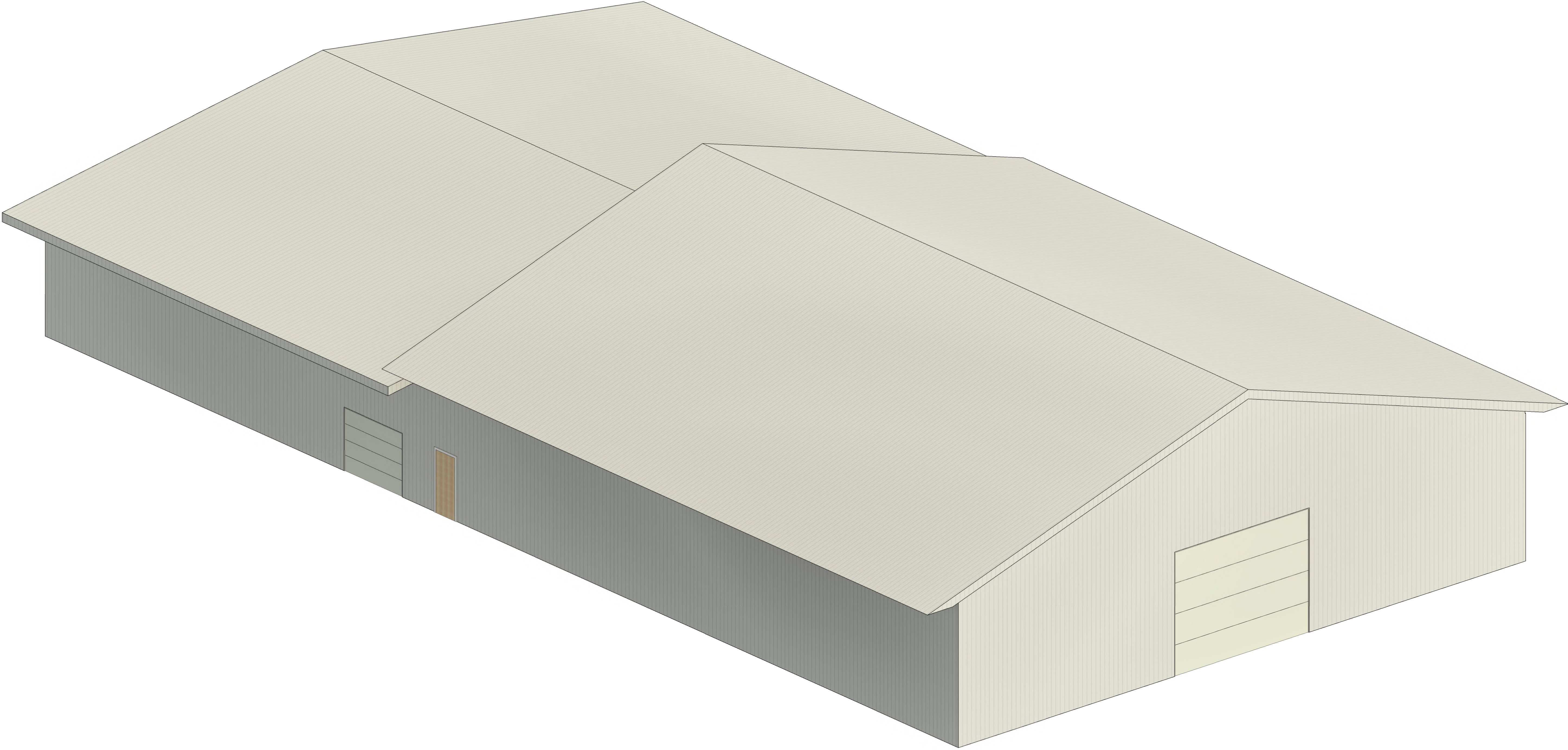
**GREENE & BRADFORD, INC.**  
CONSULTING ENGINEERS  
OF SPRINGFIELD  
4501 CONSTITUTION DRIVE  
SPRINGFIELD, ILLINOIS 62711  
PROFESSIONAL DESIGN FIRM NO. 184-001179  
PROFESSIONAL ENGINEERING CORPORATION  
(217) 793-8844, 793-6227

**BUILDING A - ELEVATION VIEWS**

**HUNDMAN LUMBER CO.**  
910 WOODLAWN ROAD  
LINCOLN, ILLINOIS

PROJ. NO. 20760.01	
FIELD BOOK	PLOT SCALE
X	As indicated
COMPUTER FILE NO.	
SHEET NO.	
<b>5</b>	

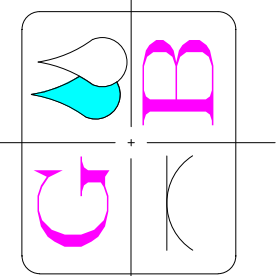
# BUILDING B - METAL & WOOD BUILDING



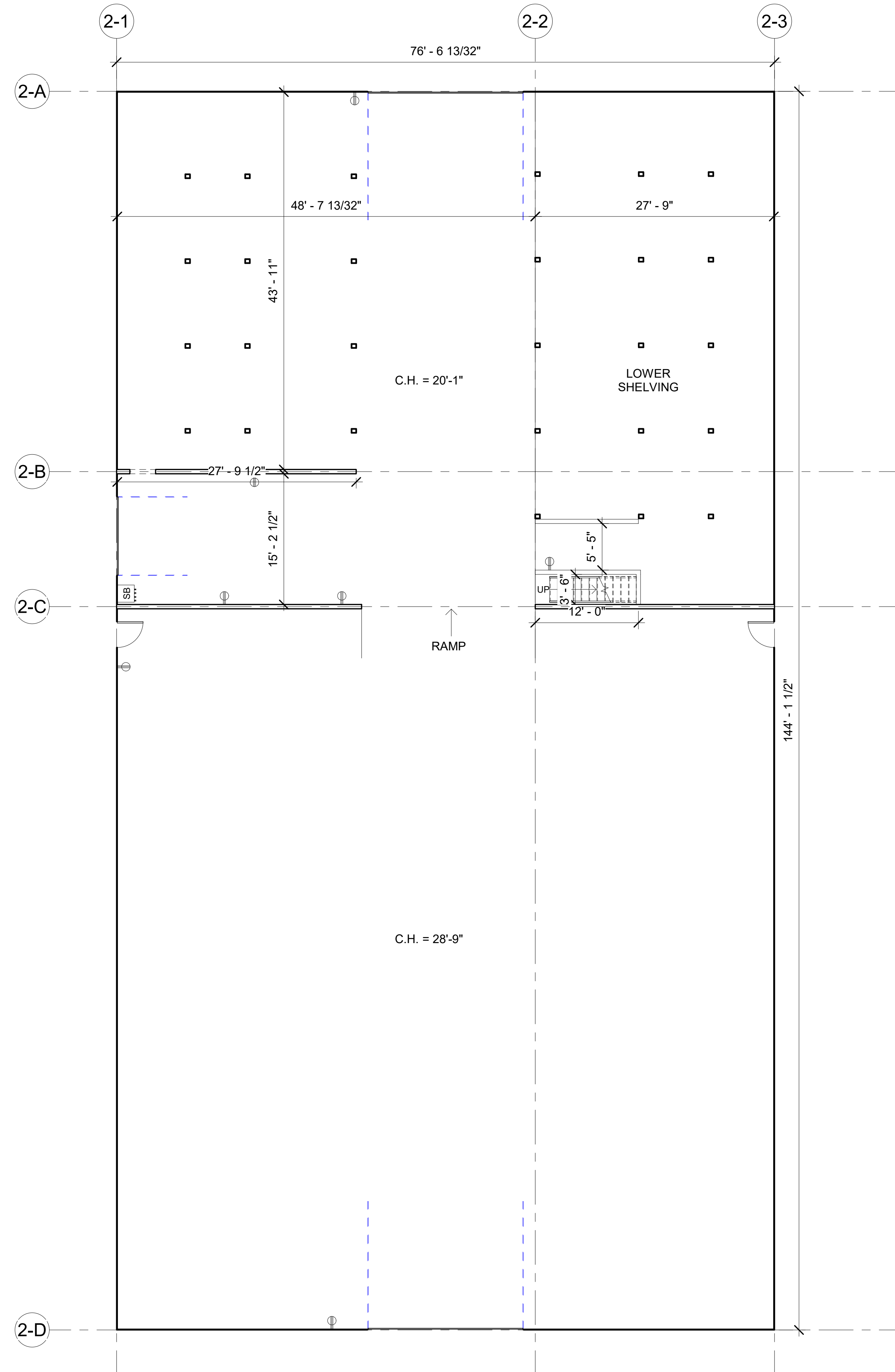
j:\20760 LDC Properties - Recertification of ALTA\DRAWINGS\Building Model\20760.01-Full.rvt  
 BELL

**NOTE:**  
 ALL DIMENSIONS, ELEVATIONS WERE OBTAINED VIA FIELD INSPECTION AND MEASUREMENTS, AND MAY NOT INCLUDE COMPLETE INFORMATION. WINDOWS AND DOORS ARE A VISUAL REPRESENTATION BASED ON THESE MEASUREMENTS, AND MAY NOT MATCH THE MAKE AND MODEL OF THOSE FOUND IN THE REAL WORLD. INFORMATION SHOWN ON THE DRAWINGS SHOULD BE FIELD VERIFIED.

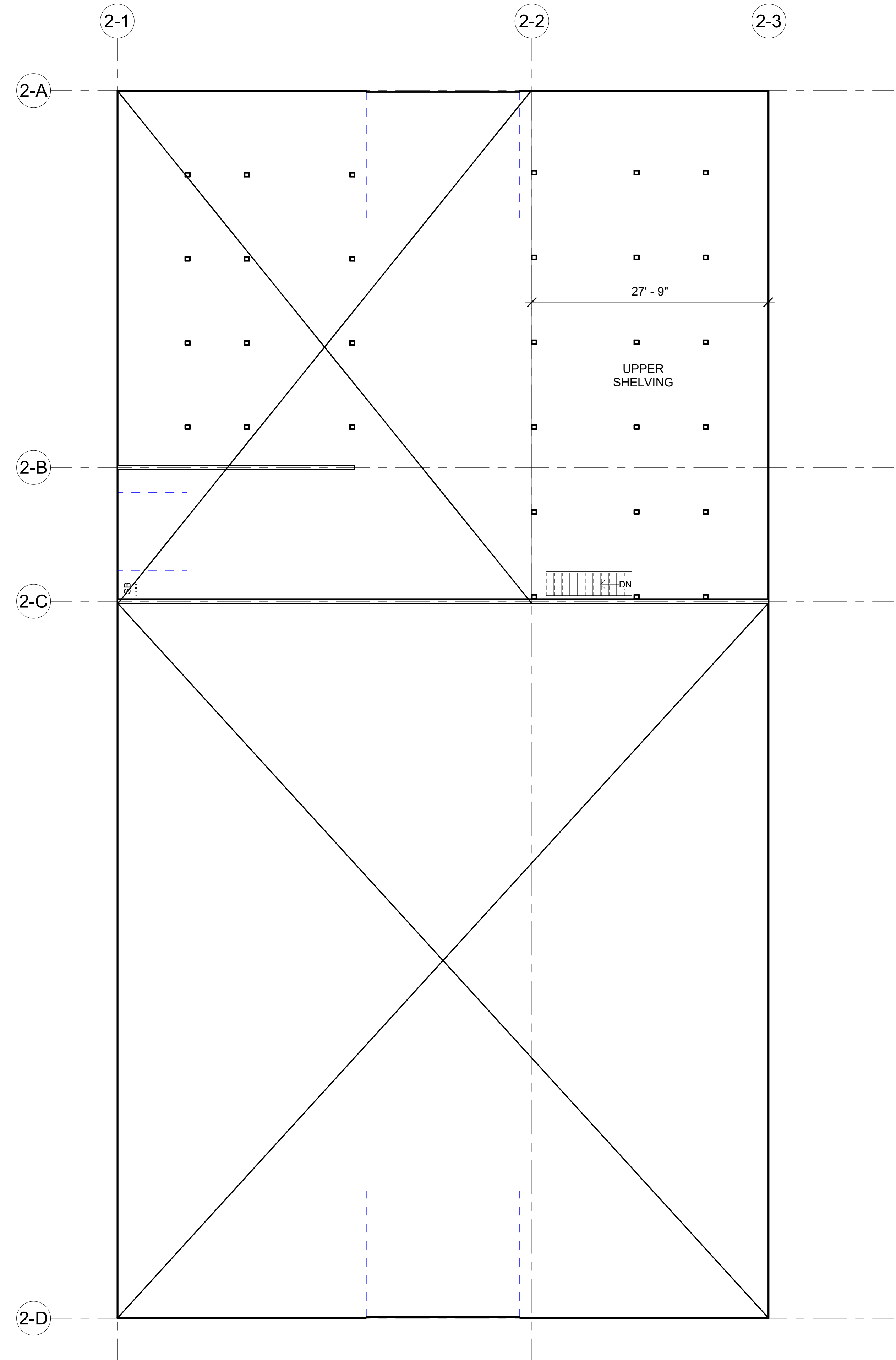
SCALE IS FOR PAPER SIZE: 24" X 36"  
 PRINTED ON: 7/28/2020 9:52:53 AM

	ISSUED		ISSUED
	BY		BY
	DATE		DATE
	7/28/2020		7/28/2020
	DESIGNED		DESIGNED
	DRAWN		DRAWN
	CHECKED		CHECKED
	APPROVED		APPROVED
<b>GREENE &amp; BRADFORD, INC.</b> CONSULTING ENGINEERS OF SPRINGFIELD 9501 CONSTITUTION DRIVE SPRINGFIELD, ILLINOIS 62711 PROFESSIONAL DESIGN FIRM NO. 184-001179 PROFESSIONAL ENGINEERING CORPORATION (217) 793-8844, 793-6227		 <b>BUILDING B</b> HUNDMAN LUMBER CO. 910 WOODLAWN ROAD LINCOLN, ILLINOIS	
PROJ. NO. 20760.01		FIELD BOOK X PLOT SCALE	
COMPUTER FILE NO.			
SHEET NO. <b>6</b>			

BELL J:\20760 LDC Properties - Recertification of ALLDRAWINGS\Building Model\20760.01-Full.rvt



① Building B Floor Plan - Metal & Wood Building  
1/8" = 1'-0"



② Building B - Level 2 (Shelving)  
1/8" = 1'-0"

- LEGEND:**
- C.H. = CEILING HEIGHT
  - SB = BREAKER BOX/SWITCH BOARD
  - = ELECTRIC OUTLET

SCALE IS FOR PAPER SIZE: 24" X 36"  
PRINTED ON: 7/28/2020 9:48:26 AM

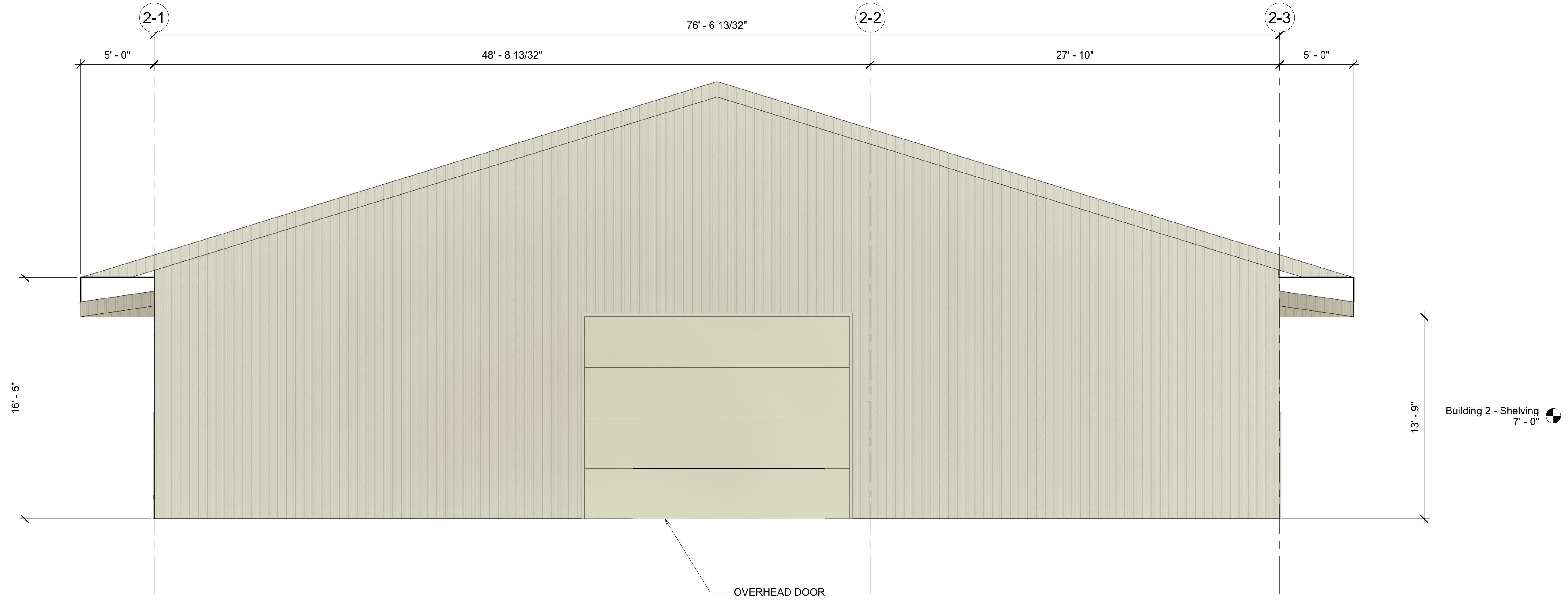
ISSUED	BY	DATE
ISSUED		
DATE	DESIGNED	DRAWN
7/28/2020	BELL	BELL
	CHECKED	SYED
	APPROVED	

**GREENE & BRADFORD, INC.**  
CONSULTING ENGINEERS  
OF SPRINGFIELD  
3501 CONSTITUTION DRIVE  
SPRINGFIELD, ILLINOIS 62711  
PROFESSIONAL DESIGN FIRM NO. 184-001179  
PROFESSIONAL ENGINEERING CORPORATION  
(217) 793-8844, 793-6227

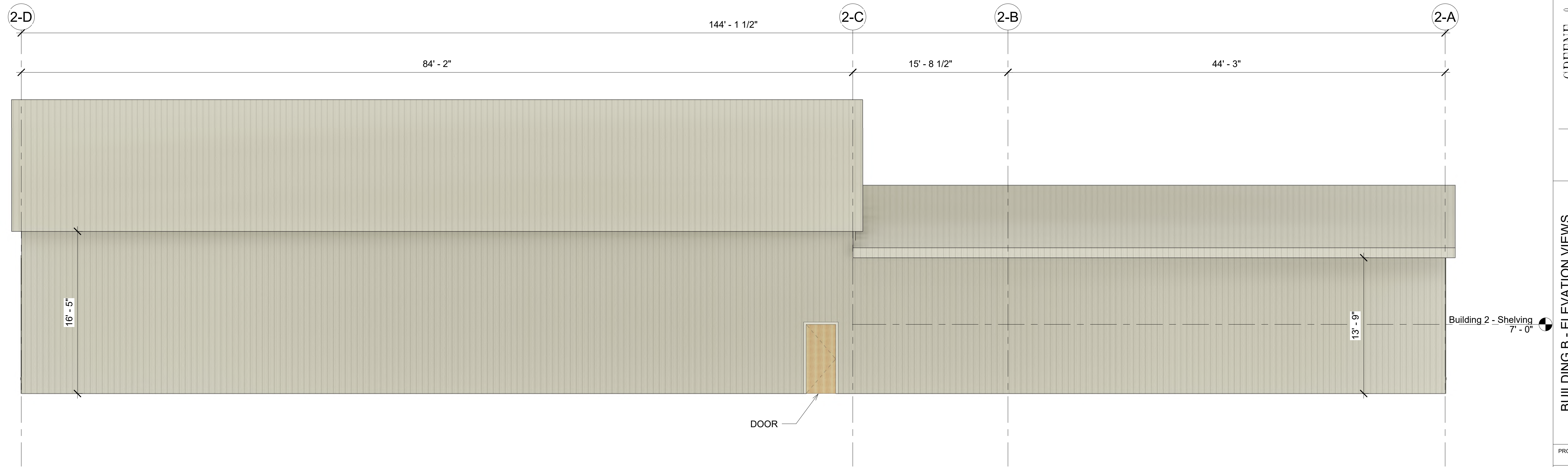
**BUILDING B - PLAN VIEW**

**HUNDMAN LUMBER CO.**  
910 WOODLAWN ROAD  
LINCOLN, ILLINOIS

PROJ. NO. 20760.01  
FIELD BOOK X PLOT SCALE 1/8" = 1'-0"  
COMPUTER FILE NO.  
SHEET NO. 7



1 Building B - South  
1/4" = 1'-0"



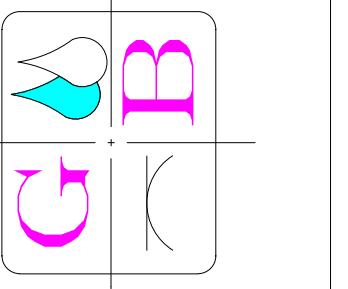
3 Building B - East  
3/16" = 1'-0"

ISSUED
BY
DATE

ISSUED
DATE
DESIGNED
DRAWN
CHECKED
APPROVED

7/28/2020  
 BELL  
 SYED  
 APPROVED

**GREENE & BRADFORD, INC.**  
 CONSULTING ENGINEERS  
 OF SPRINGFIELD  
 9501 CONSTITUTION DRIVE  
 SPRINGFIELD, ILLINOIS 62711  
 PROFESSIONAL DESIGN FIRM NO. 184-001179  
 PROFESSIONAL ENGINEERING CORPORATION  
 (217) 793-8844, 793-6227

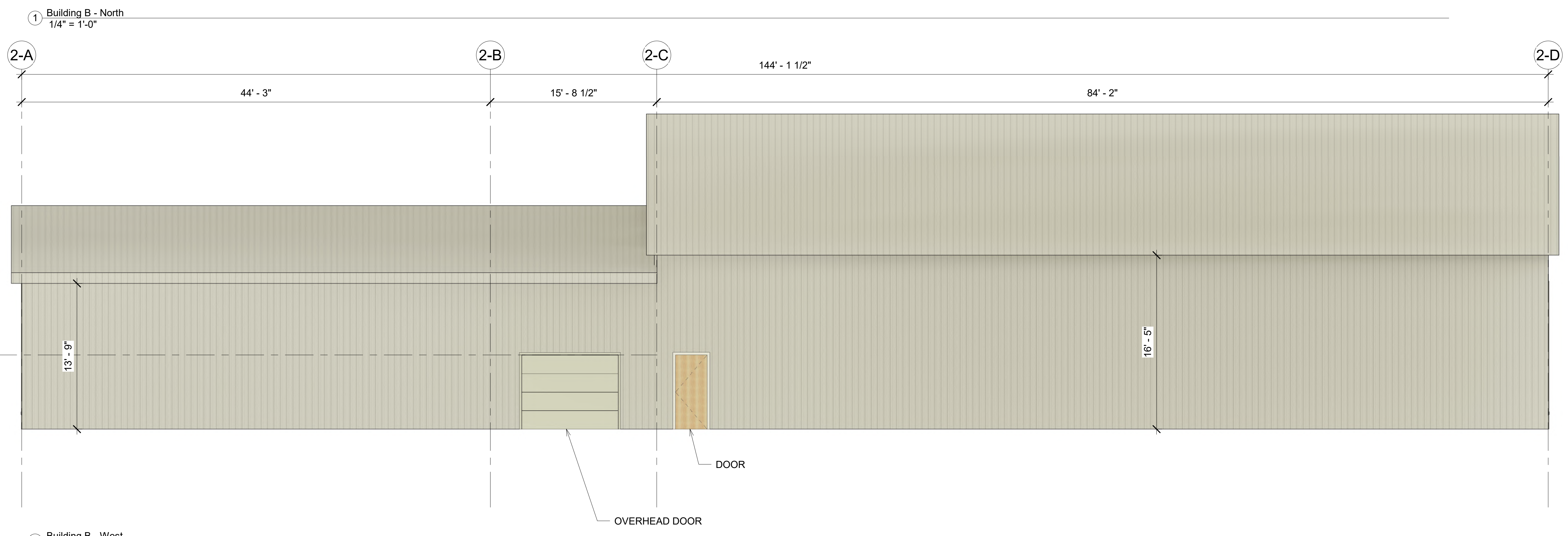
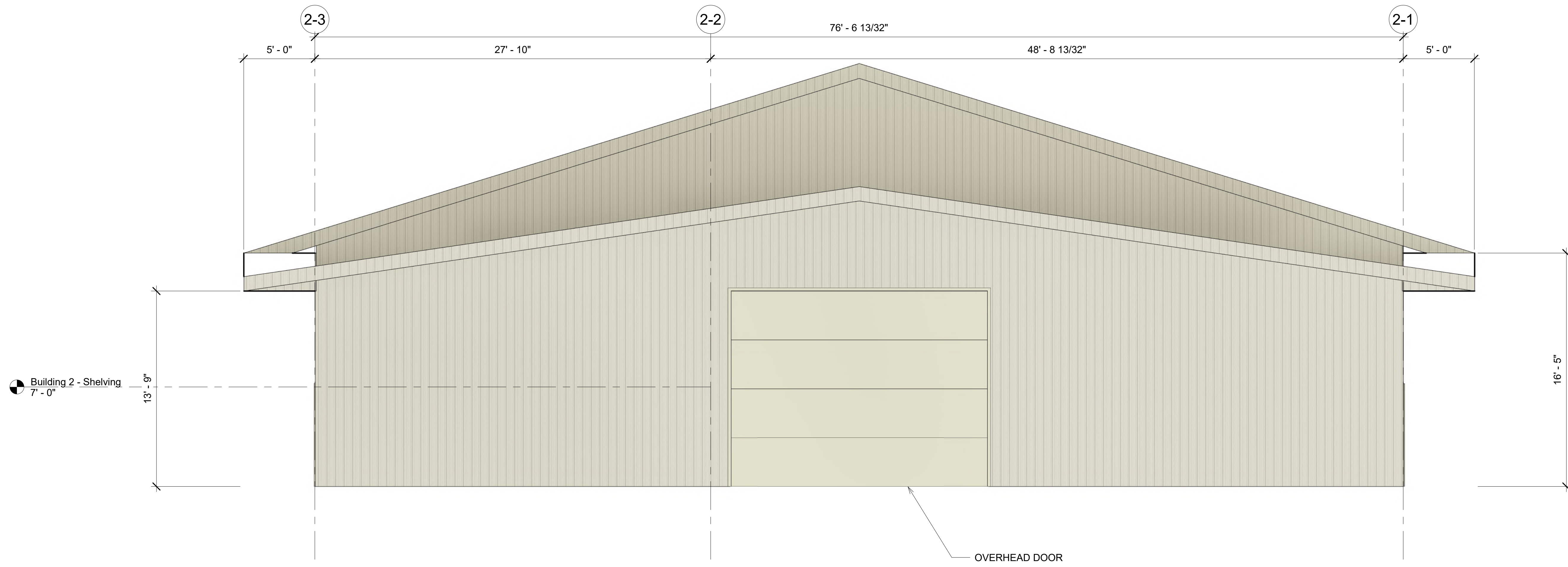


**BUILDING B - ELEVATION VIEWS**

**HUNDMAN LUMBER CO.**  
 910 WOODLAWN ROAD  
 LINCOLN, ILLINOIS

PROJ. NO.	20760.01
FIELD BOOK	X
COMPUTER FILE NO.	
SHEET NO.	8

BELL J:\20760 LDC Properties - Recertification of ALL DRAWINGS\Building Model\20760.01-Full.rvt

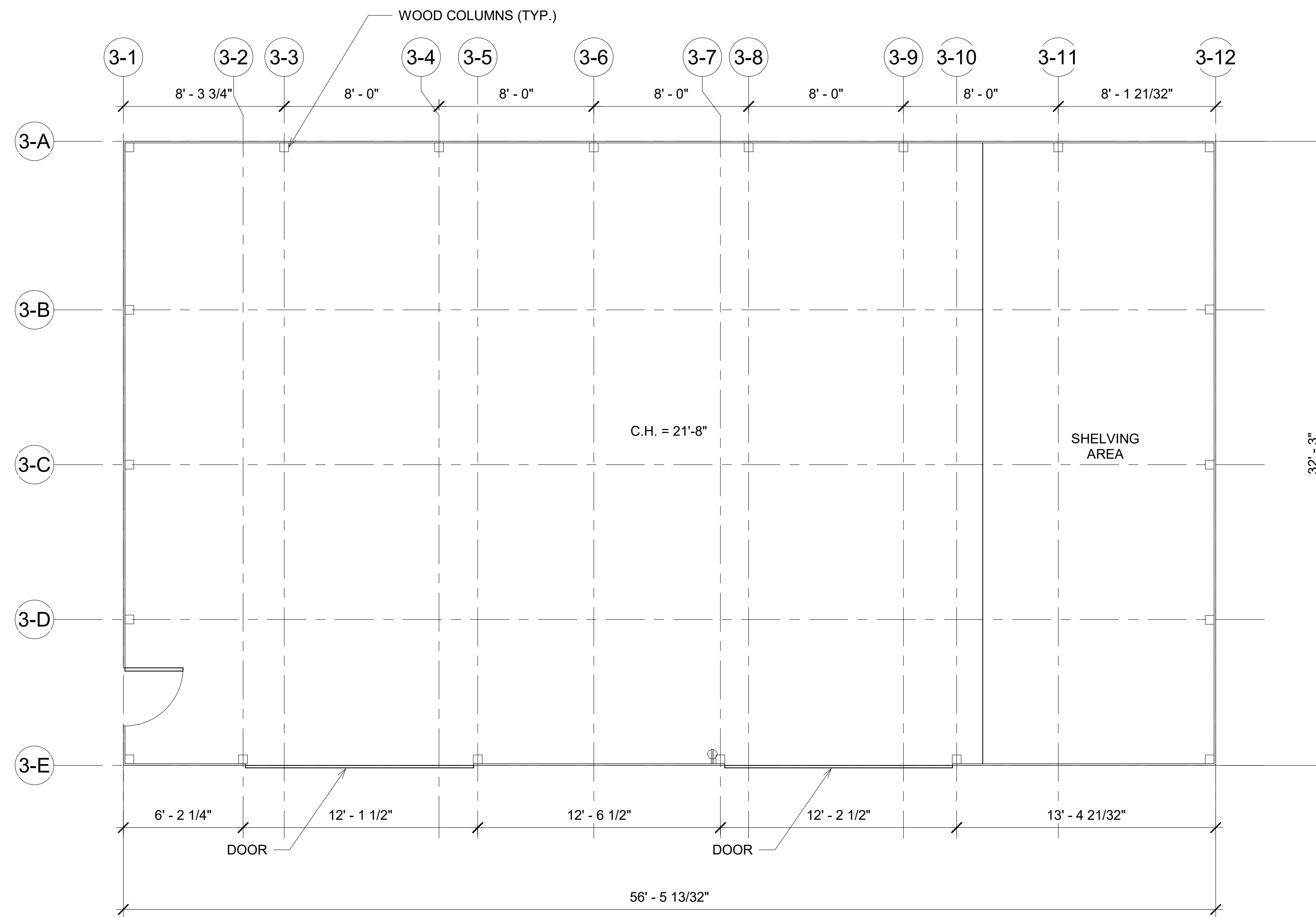


BELL J:\20760 LDC Properties - Recertification of ALTA\DRAWINGS\Building Model\20760.01-Full.rvt

SCALE IS FOR PAPER SIZE: 24" X 36"  
 PRINTED ON: 7/28/2020 9:49:02 AM

ISSUED	BY	DATE	DESIGNED	DRAWN	CHECKED	APPROVED
7/28/2020			BELL	BELL	SYED	SYED
ISSUED						
<b>GREENE &amp; BRADFORD, INC.</b> CONSULTING ENGINEERS OF SPRINGFIELD 3501 CONSTITUTION DRIVE SPRINGFIELD, ILLINOIS 62711 PROFESSIONAL DESIGN FIRM NO. 184-001179 PROFESSIONAL ENGINEERING CORPORATION (217) 793-8844, 793-6227						
<b>BUILDING B - ELEVATION VIEWS</b> <b>HUNDMAN LUMBER CO.</b> 910 WOODLAWN ROAD LINCOLN, ILLINOIS						
PROJ. NO. 20760.01						
FIELD BOOK			PLOT SCALE			
X			As indicated			
COMPUTER FILE NO.						
SHEET NO.						
9						

# BUILDING C - METAL BUILDING



1 Building C Floor Plan - Metal Building  
1/4" = 1'-0"

**LEGEND:**

- C.H. = CEILING HEIGHT
- SB = BREAKER BOX/SWITCH BOARD
-  = ELECTRIC OUTLET

SCALE IS FOR PAPER SIZE: 24" X 36"  
PRINTED ON: 7/28/2020 9:49:07 AM

BELL j:\20760 LDC Properties - Recertification of ALTA\DRAWINGS\Building Model\20760.01-Full.rvt

ISSUED	BY	DATE	ISSUED	BY	DATE
7/28/2020	DESIGNED	DRAWN	CHECKED	APPROVED	
	BELL	SYED			
<b>GREENE &amp; BRADFORD, INC.</b> CONSULTING ENGINEERS OF SPRINGFIELD 9501 CONSTITUTION DRIVE SPRINGFIELD, ILLINOIS 62711 PROFESSIONAL DESIGN FIRM NO. 184-001179 PROFESSIONAL ENGINEERING CORPORATION (217) 793-8844, 793-6227					
					
<b>BUILDING C</b> <b>HUNDMAN LUMBER CO.</b> 910 WOODLAWN ROAD LINCOLN, ILLINOIS					
PROJ. NO. 20760.01					
FIELD BOOK			PLOT SCALE		
X			1/4" = 1'-0"		
COMPUTER FILE NO.					
SHEET NO.					
10					