

4710 BLAKISTON STREET
PHILADELPHIA, PA

AVAILABLE FOR SALE
INDUSTRIAL PROPERTY

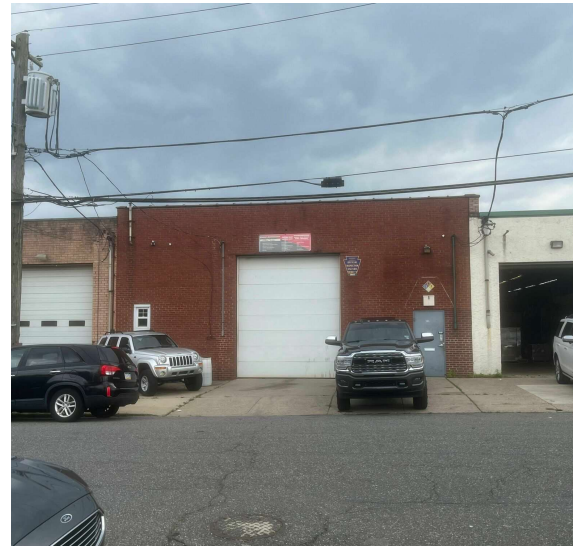
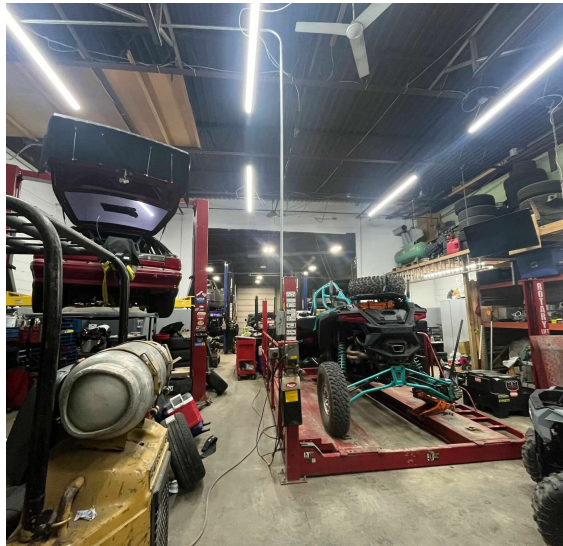
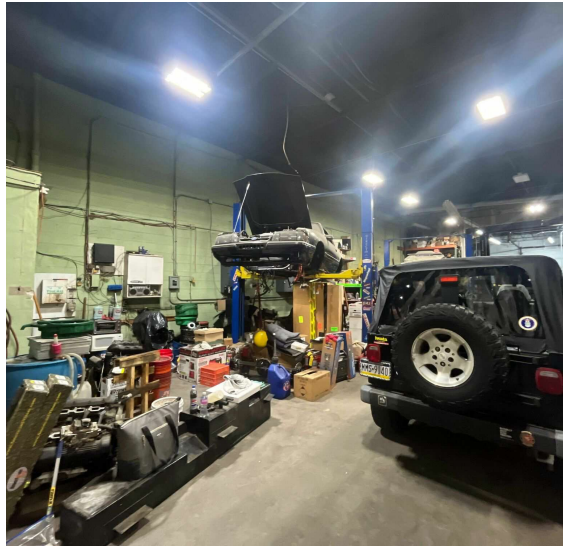
4,000 SF
0.14 Acres

PROPERTY HIGHLIGHTS

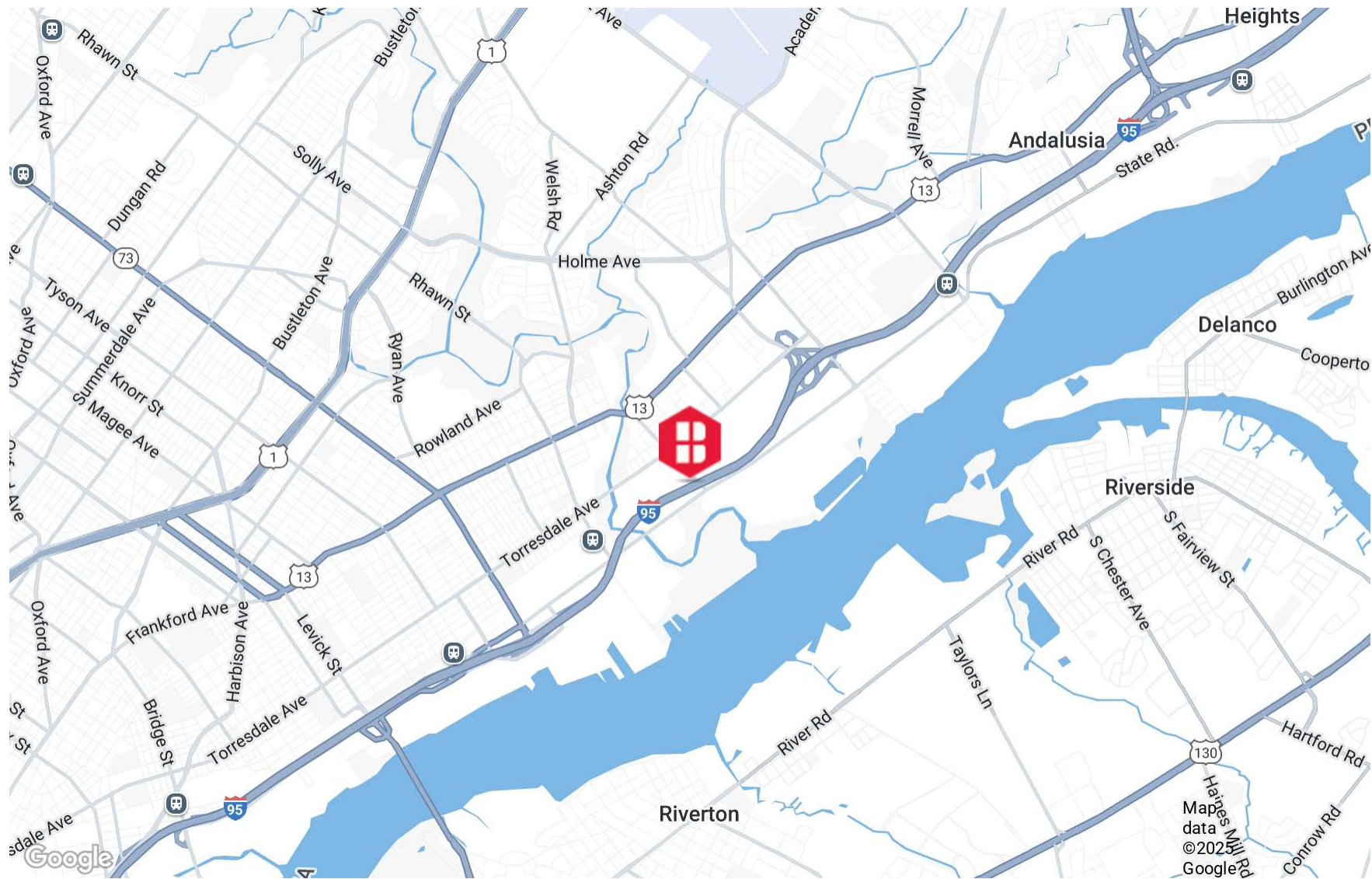
- 40' Frontage to Blakiston Street
- 16'10" Clear Height
- Two (2) Drive-ins (14' x 12')
- 250 SF +/- Air-Conditioned Office
- Warehouse
- 80-gallon Air Compressor
- Security System
- \$3,304 Estimated 2025 Taxes
- ICMX – Industrial Commercial Mixed-Use (City of Philadelphia)
- Strategically off I-95 in Northeast Philadelphia, this site offers industrial users accessibility to Greater Philadelphia and New Jersey. Guests and employees can access the property through the nearby Holmesburg SEPTA Station, bridges from New Jersey, and I-95.



ADDITIONAL PHOTOS



AREA MAP



DEMOGRAPHICS MAP & REPORT

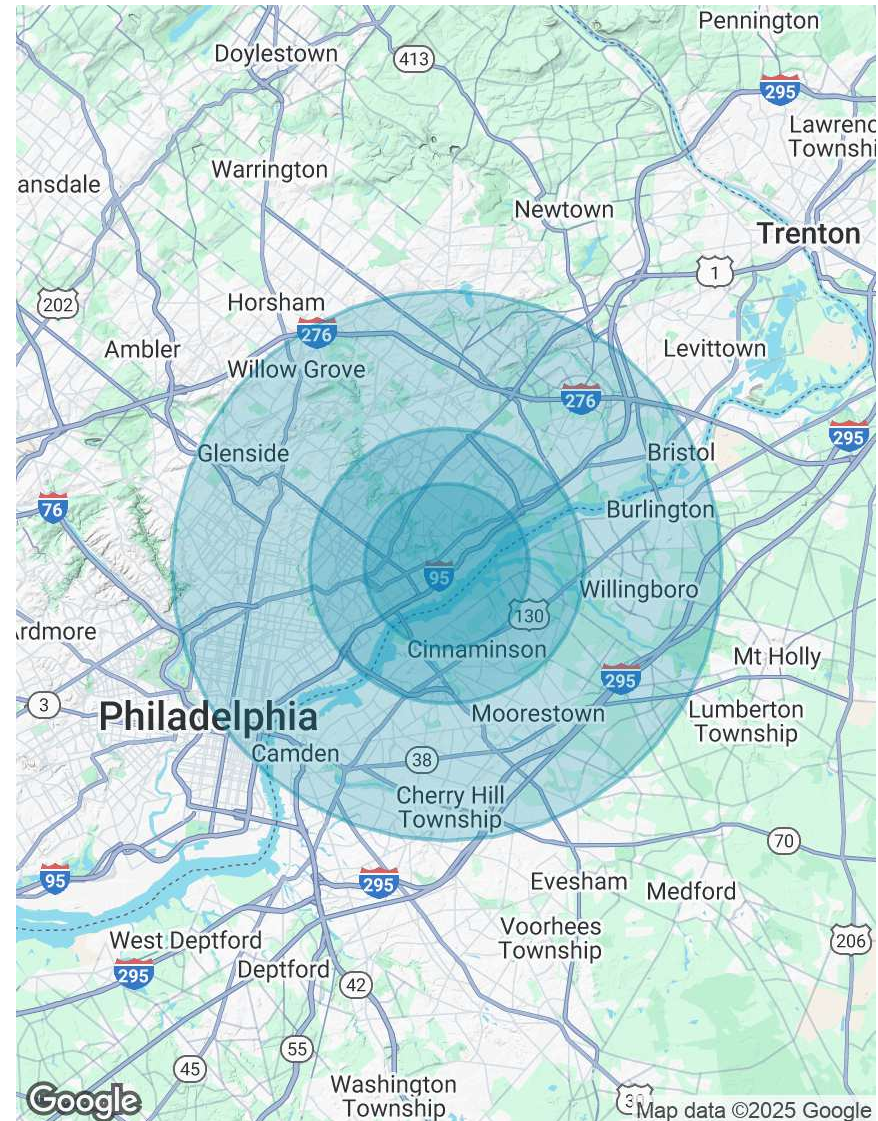
POPULATION

	3 MILES	5 MILES	10 MILES
Total Population	197,228	467,920	1,741,793
Average Age	40	40	40
Average Age (Male)	39	39	38
Average Age (Female)	41	41	41

HOUSEHOLDS & INCOME

	3 MILES	5 MILES	10 MILES
Total Households	73,755	173,519	681,713
# of Persons per HH	2.7	2.7	2.6
Average HH Income	\$85,425	\$89,634	\$94,387
Average House Value	\$254,366	\$261,458	\$300,968

Demographics data derived from AlphaMap



CONTACT



Christopher Pennington
Partner & Senior Vice President
215.448.6053
cpennington@binswanger.com



Michael Pennington
Vice President
215.448.6091
mpennington@binswanger.com



Three Logan Square
1717 Arch Street, Suite 5100
Philadelphia, PA 19103
Phone: 215.448.6000
binswanger.com

The information contained herein is from sources deemed reliable, but no warranty or representation is made as to the accuracy thereof and no liability may be imposed.