

FOR LEASE

34092

VIOLET LANTERN, DANA POINT



34092

LEE & ASSOCIATES
COMMERCIAL REAL ESTATE SERVICES

TRAVIS BARNETT | BROCK STRYKER | GUY LAFERRARA

HIGHLIGHTS

- SUITE 100: ± 330 SF
- 1ST FLOOR OFFICE SPACE
- LEASE RATE: \$4.00/SF MG OR \$1,320.00/MONTH
- ONE (1) UNRESERVED PARKING SPACE
- STREET PARKING AVAILABLE
- WALKING DISTANCE TO MANY AMENITIES
- AVAILABLE 9/1/26



34092

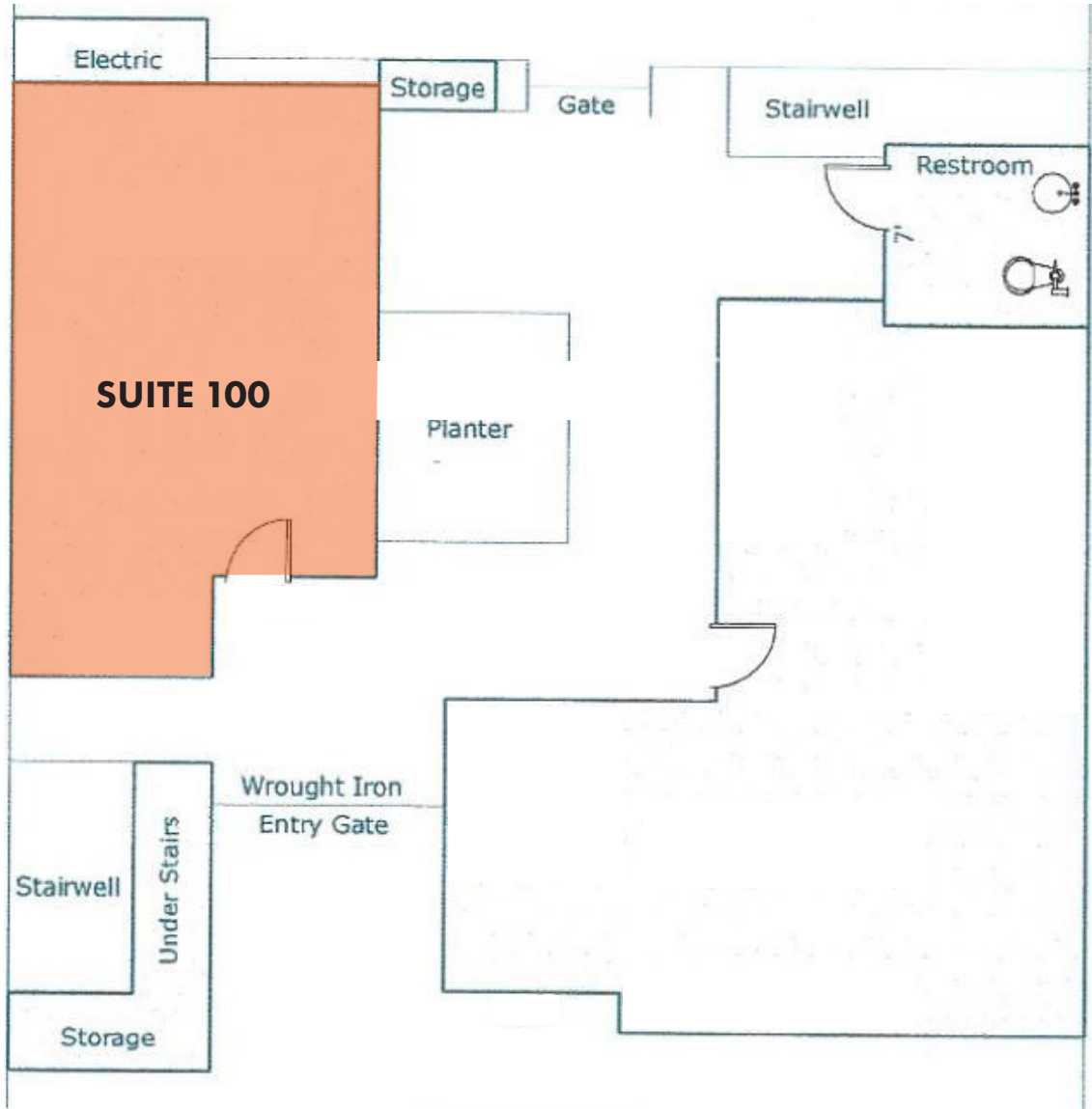
VIOLET LANTERN, DANA POINT



BABY BEACH

**CLOSE PROXIMITY TO
PCH, DOWNTOWN DANA
POINT AND THE OCEAN**

FLOOR / SITE PLAN



34092

TRAVIS BARNETT
Associate
CaDRE 02069500
949.790.3145
tbarnett@leeirvine.com

BROCK STRYKER
Senior Vice President
CaDRE 01928271
949.790.3131
bstryker@leeirvine.com

GUY LAFERRARA
Senior Vice President
CaDRE 01012355
949.790.3115
glaferrara@leeirvine.com

 **LEE &
ASSOCIATES**
COMMERCIAL REAL ESTATE SERVICES

No warranty or representation is made to the accuracy of the foregoing information. Terms of sale or lease and availability are subject to change or withdrawal without notice.
This material can not be copied or reproduced in any manner whatsoever without the permission of listing brokers listed above.