

28312 Hayes Rd

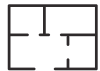
Roseville, MI

- 9,050 Sq. Ft. For Lease
- Drive Through Capability
- Flexible Terms
- Professionally Managed Industrial Park
- Clear Span Warehouse

INDUSTRIAL BUILDING FOR LEASE



6,950 SF of Factory



2,100 SF of Office



2 Grade Level Doors



FOR MORE INFORMATION:

Jason Capitani, SIOR, CCIM
Managing Partner
248.637.7684
jcapitani@LMCap.com



L. MASON CAPITANI
CORFAC INTERNATIONAL

248.637.9700 | LMCap.com

Information contained herein was obtained from sources deemed to be reliable but is not guaranteed. Subjects to prior sales, changes of price or withdrawal.

28312 Hayes Rd

Roseville, MI



Industrial Property Details:

Details:

Total SF:	9,050 SF
Available SF:	9,050 SF
Office SF:	2,100 SF
Factory SF:	6,950 SF
Zoning:	Industrial
Expandable:	Yes
Intersection:	Hayes / Martin
X-Way Distance:	1 Mile I-696
Parking:	Ample
Year Built:	1977
Outside Storage:	No
Rail Siding:	No

Interior:

Ceiling Height:	17'
Bay Size:	Clear Span
Restrooms:	6
Power:	Primary
Power Details:	208/240V 1,200 Amps
Lighting:	Metal Halide
Truckwells:	None
Grade Door:	(1) 10'x14', (1) 12'x14'
Heating:	Unit/Blower
A/C:	Office Only
Sprinklered:	No
Floor Drains:	No

Economic:

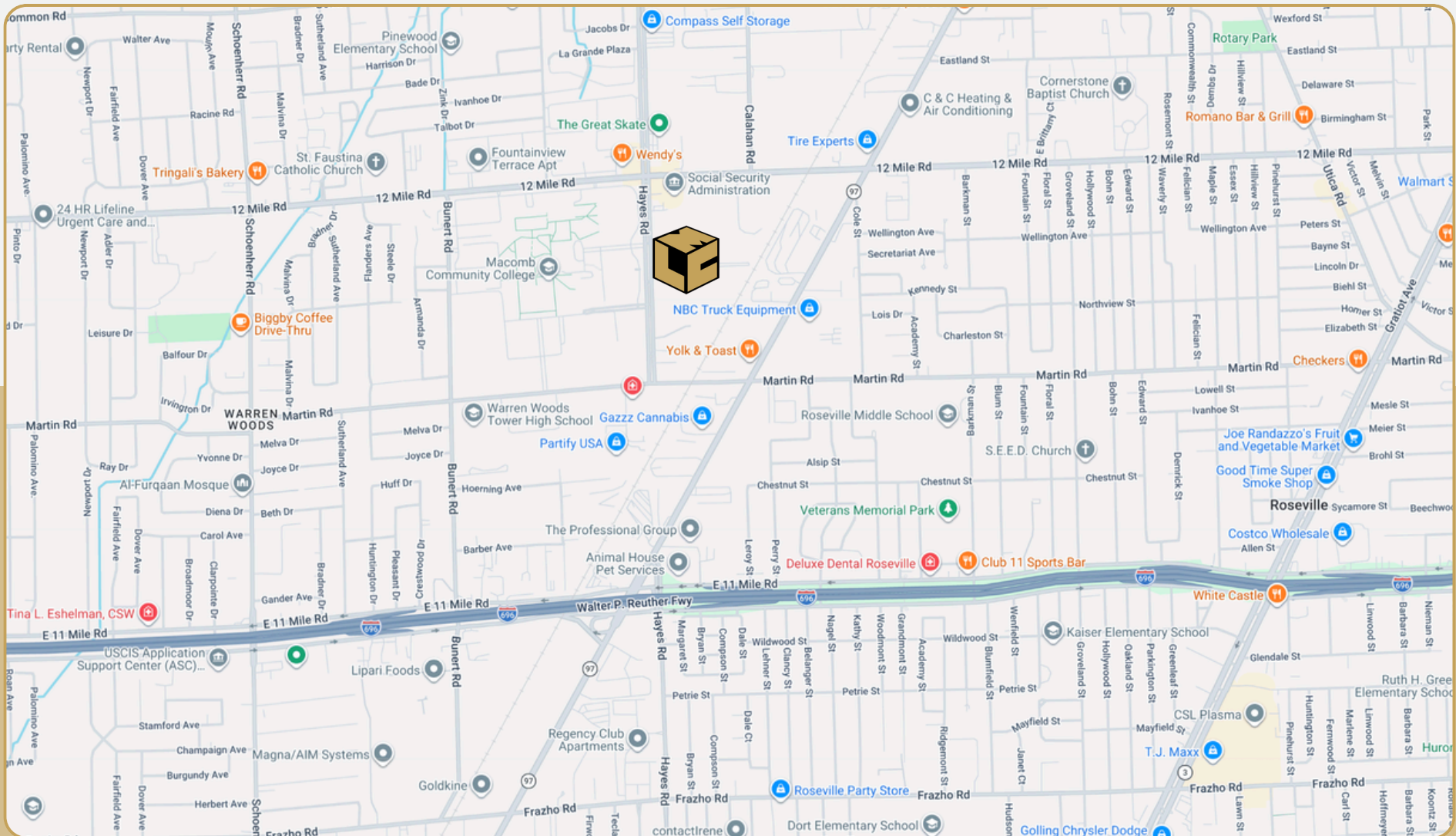
Lease/SF:	\$8.95
Lease/Month:	\$6,749.79
Lease Terms:	Gross

28312 Hayes Rd

Roseville, MI



L. MASON CAPITANI
CORFAC INTERNATIONAL



248.637.9700 | LMCap.com

Information contained herein was obtained from sources deemed to be reliable but is not guaranteed. Subjects to prior sales, changes of price or withdrawal.