

FOR LEASE - HEATED SHOPS



2730 PAINT BALL WAY, UNITS B & C, BISMARCK

PROPERTY DESCRIPTION

2730 Paint Ball Way offers flexible lease terms, including a competitive rate of \$8 PSF (Modified Gross) plus utilities, with a minimum 3-year lease. With 3,000 SF each, these spaces can accommodate a variety of needs. These units provide convenient amenities, such as 16' sidewall height, 14'x14' overhead doors with openers, 3-phase power, restroom, and more. Embrace the opportunity for a well-equipped, modern industrial space!!

PROPERTY HIGHLIGHTS

- 3,000 SF Each
- 16' Sidewall Height
- 14' x 14' Overhead Doors w/Openers
- 7' x 9.5' Restroom
- 1 Small Office / Lab
- 3 Phase Power
- 120/240V 200 Amp Electrical Panel
- Trench Floor Drain
- Gas Fan-Forced Blower Unit Heater

OFFERING SUMMARY

Lease Rate:	\$2,000 Per Month + Utilities
Lease Space:	3,000 SF
Lease Terms:	Minimum 3 Year Lease
Availability:	Summer 2026

NEARBY BUSINESSES

Dakota Line Contractors	My Space Self Storage
Integrity Landscape	Shenanigans
Lincoln Elementary	Tumbleweed Steakhouse

- Snow Removal \$200/month for 4 Months
- 4" Reinforced Concrete Floors
- Interior Walls Sheet Rocked and Painted w/White Steel Liner Panel
- Exterior Signage Available



George Yineman
Associate Broker/Commercial REALTOR®

George@risepropertybrokers.com
c: 701.319.3000

All information herein has been obtained from sources deemed reliable. No warranty or guarantee is made as to the accuracy of the information.

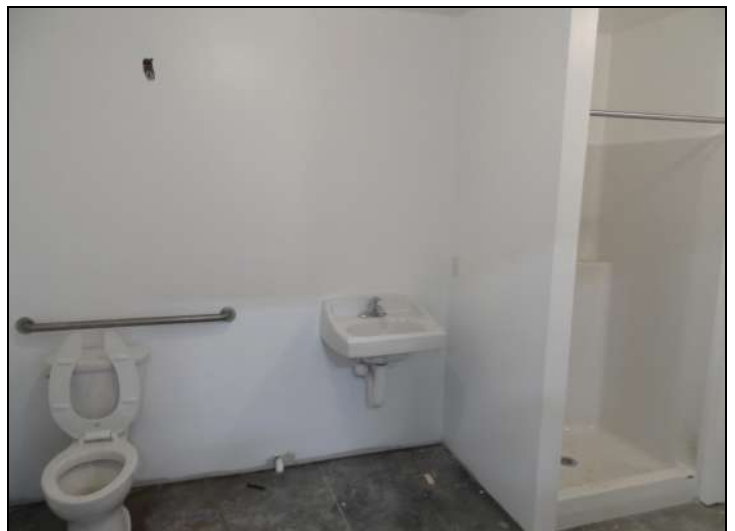
RISE PROPERTY BROKERS

1010 E Central Ave
Bismarck, ND 58501

o: 701.222.0232

risepropertybrokers.com

PROPERTY PHOTOS



George Yineman
Associate Broker/Commercial REALTOR®
George@risepropertybrokers.com
c: 701.319.3000

*All information herein has been obtained from sources deemed reliable.
No warranty or guarantee is made as to the accuracy of the information.*

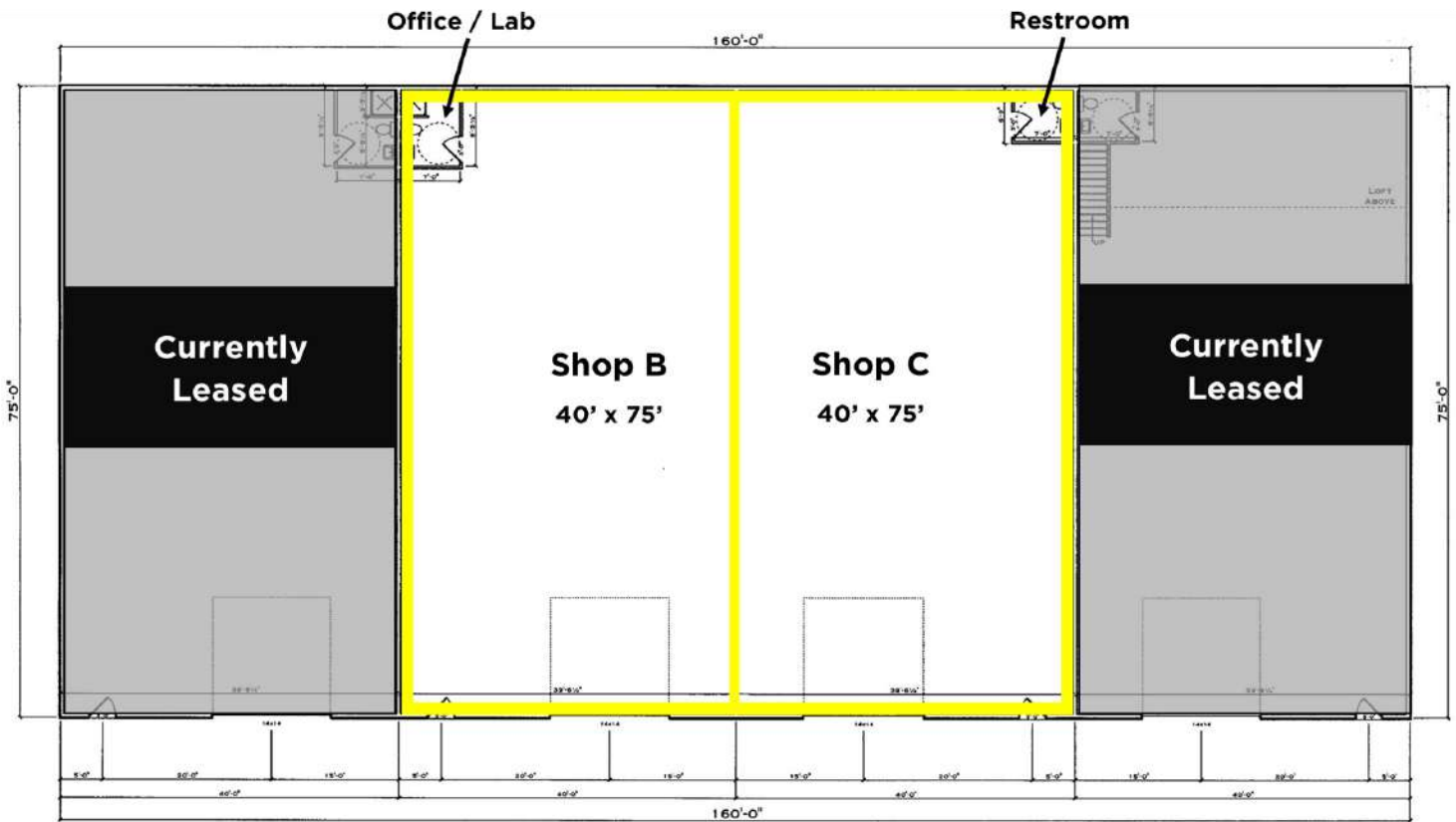
RISE PROPERTY BROKERS

1010 E Central Ave
Bismarck, ND 58501

o: 701.222.0232

risepropertybrokers.com

FLOOR PLAN



George Yineman
Associate Broker/Commercial REALTOR®
George@risepropertybrokers.com
c: 701.319.3000

RISE PROPERTY BROKERS

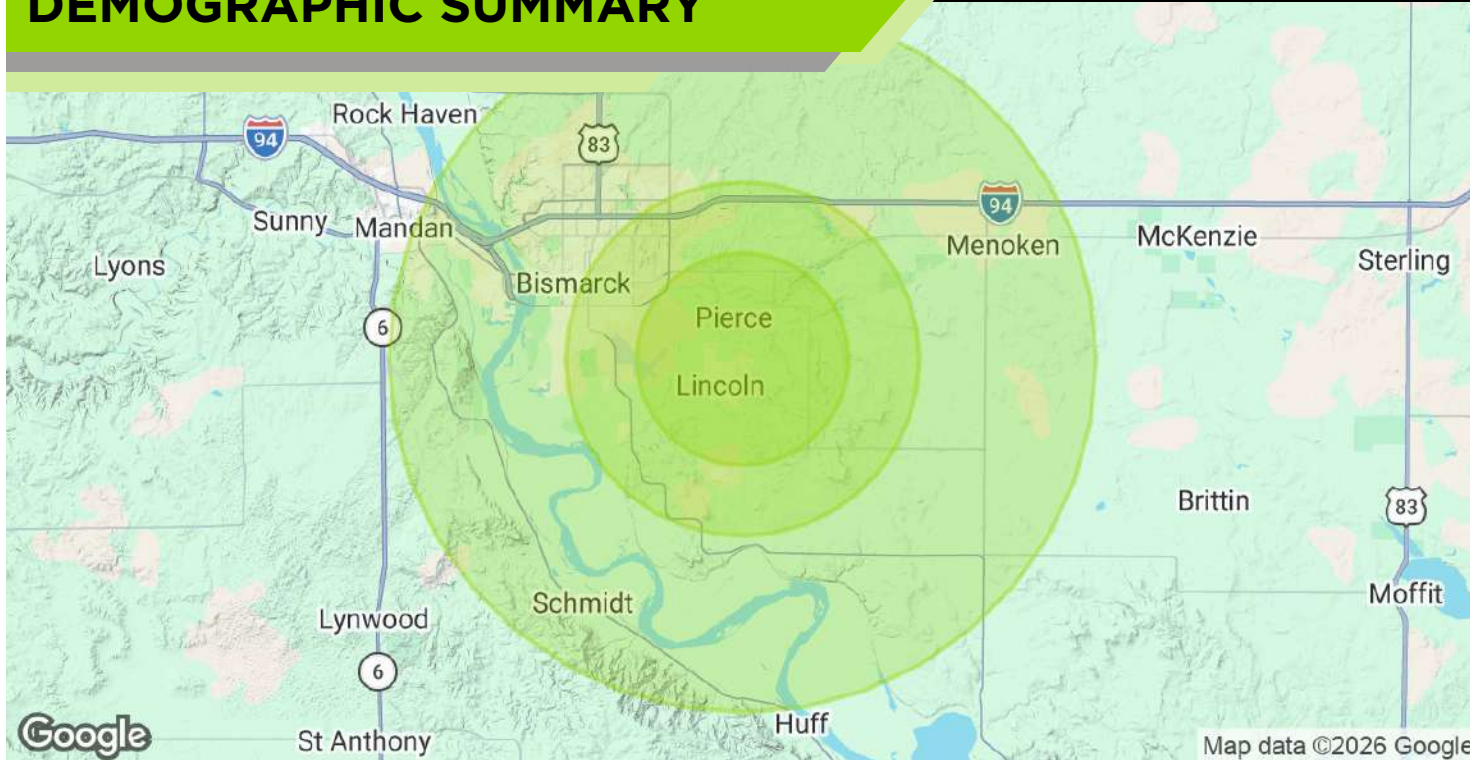
1010 E Central Ave
Bismarck, ND 58501

o: 701.222.0232

risepropertybrokers.com

*All information herein has been obtained from sources deemed reliable.
No warranty or guarantee is made as to the accuracy of the information.*

DEMOGRAPHIC SUMMARY



POPULATION

3 MILES

5 MILES

10 MILES

Total Population	7,574	38,015	107,464
Average Age	34	38	40

HOUSEHOLDS & INCOME

3 MILES

5 MILES

10 MILES

Total Households	2,527	14,911	43,847
# of Persons per HH	3	2.5	2.5
Average HH Income	\$103,319	\$91,955	\$98,236
Average House Value	\$342,125	\$294,394	\$322,401

2020 American Community Survey (ACS)



George Yineman
 Associate Broker/Commercial REALTOR®
 George@risepropertybrokers.com
 c: 701.319.3000

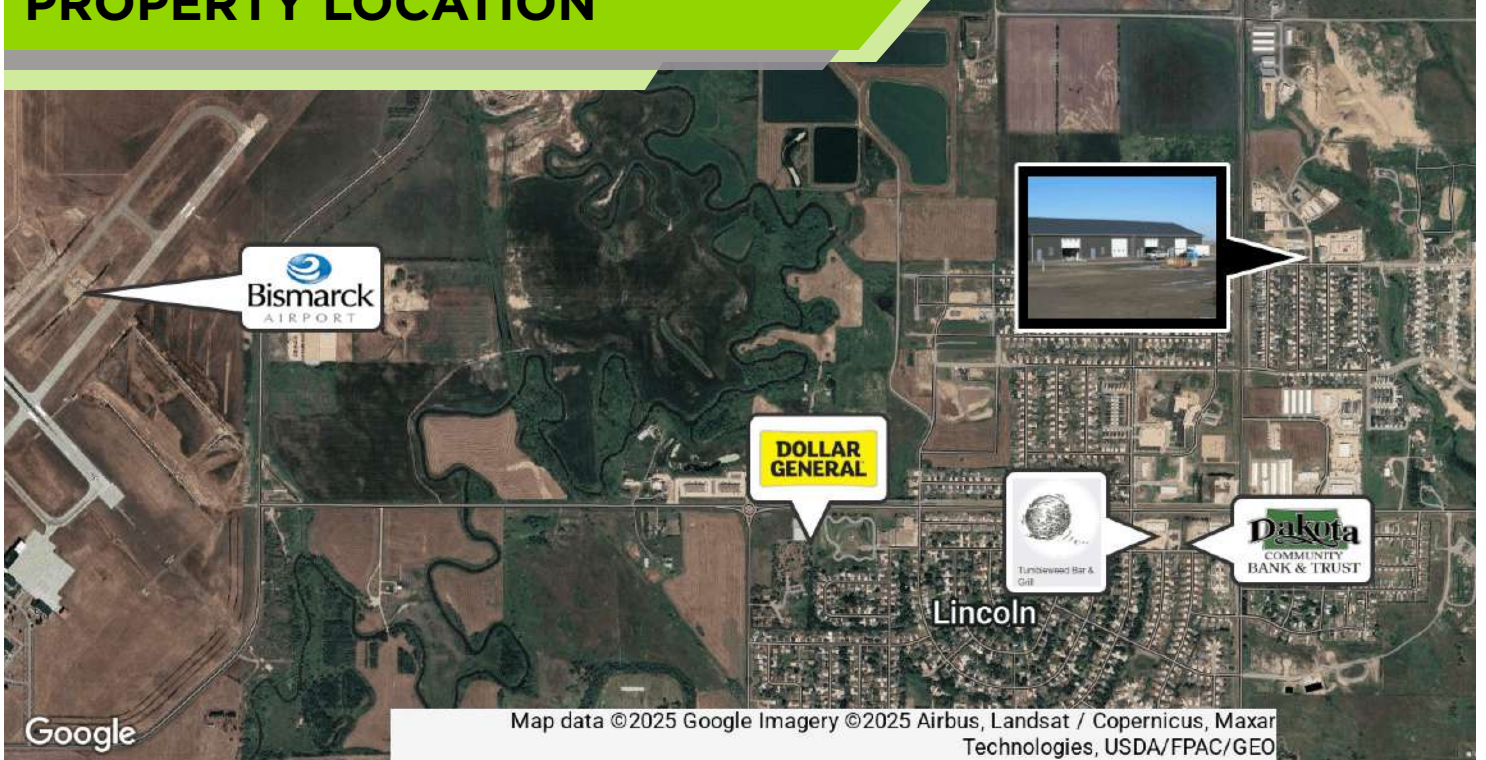
RISE PROPERTY BROKERS

1010 E Central Ave
 Bismarck, ND 58501
 o: 701.222.0232

risepropertybrokers.com

All information herein has been obtained from sources deemed reliable.
 No warranty or guarantee is made as to the accuracy of the information.

PROPERTY LOCATION



LOCATION OVERVIEW

Near the intersection of 66th and Lincoln Road, across from Lincoln Elementary



All information herein has been obtained from sources deemed reliable. No warranty or guarantee is made as to the accuracy of the information.

George Yineman
Associate Broker/Commercial REALTOR®
George@risepropertybrokers.com
c: 701.319.3000

RISE PROPERTY BROKERS

1010 E Central Ave
Bismarck, ND 58501

o: 701.222.0232

risepropertybrokers.com



COMMERCIAL REAL ESTATE AT AN ELEVATED LEVEL



George Yineman

Broker Associate / Commercial REALTOR®

701.319.3000

THE RISE TEAM



Adam Geiger

Broker / President

701.425.9427



George Yineman

**Broker Associate /
Commercial REALTOR®**

701.319.3000



Jon Lee

**Broker Associate /
Commercial REALTOR®**

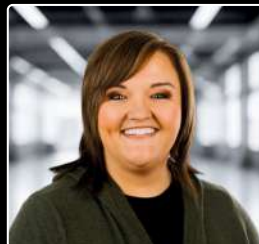
701.400.4445



Regina Yineman

VP of Operations / REALTOR®

701.471.3140



Maleah Nelsen

**Licensed Agent /
Marketing Specialist**

701.301.0259



Fred Koenig

Commercial REALTOR®

701.226.7206



Tyrus Jangula

**Sales Assistant /
Commercial Agent**

701.390.2909