



# APEX 64

1475 - 1485 GOODWIN ROAD | APEX, NC

*±7,400 SF - 154,350 SF Light  
Industrial Space with Frontage  
Along Highway 64 in Apex*

**DELIVERING JUNE 2026**



**PELICAN**  
INDUSTRIAL

**CBRE**

# Property Highlights



**154,350**  
Total SF Available



**78,750**  
Largest Contiguous SF



**24'**  
Clear Heights



**ESFR**  
Sprinkler System



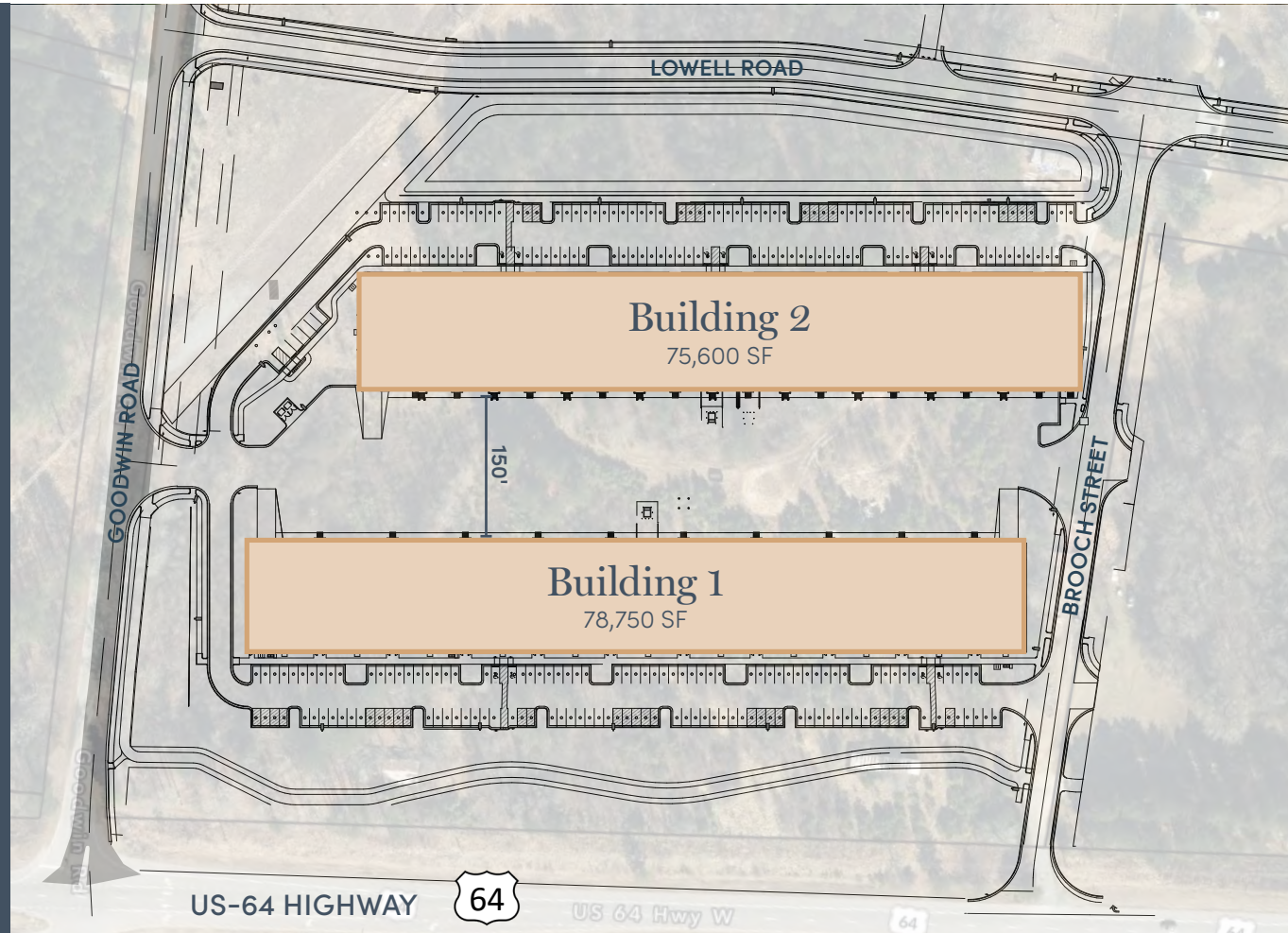
**Loading**  
Dock & Drive-In Doors



**35'**  
Typ. Column Width



**2.0/1,000**  
Auto Parking



## CONSTRUCTION TARGET DATES

<input checked="" type="checkbox"/>	Clearing & Site Work	Complete	<input checked="" type="checkbox"/>	Storefronts, Windows & Doors Installed	Complete
<input checked="" type="checkbox"/>	Foundation Work/Slab Pour	Complete	<input type="checkbox"/>	Asphalt & Landscaping Installed	In Progress
<input checked="" type="checkbox"/>	Walls Tilted / Steel Erection	Complete	<input type="checkbox"/>	Shell Completion	June 2026
<input checked="" type="checkbox"/>	Roof Installed & Dried In	Complete			

# Construction Photos

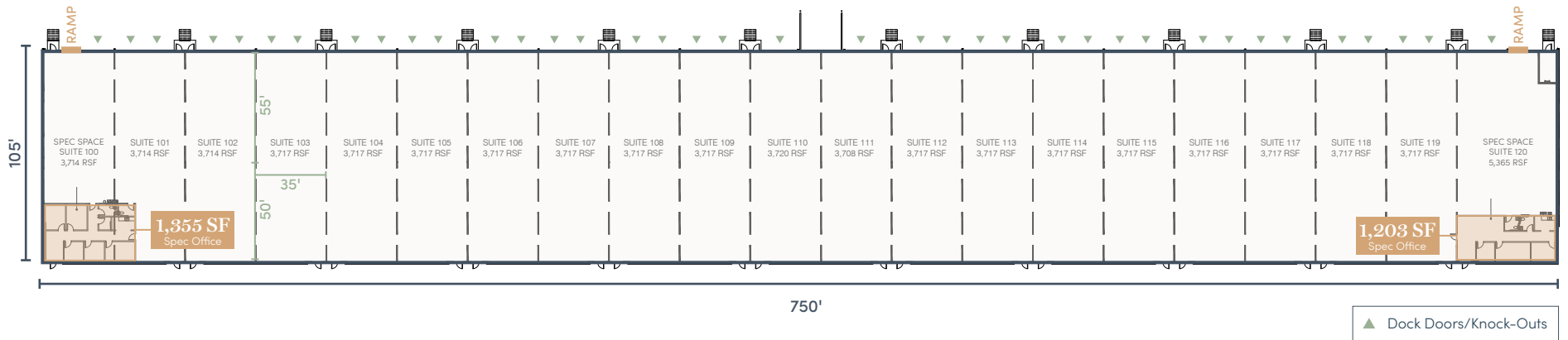
JUNE 2026



# Building 1

±7,400 SF - 78,750 SF AVAILABLE

## SHARED TRUCK COURT

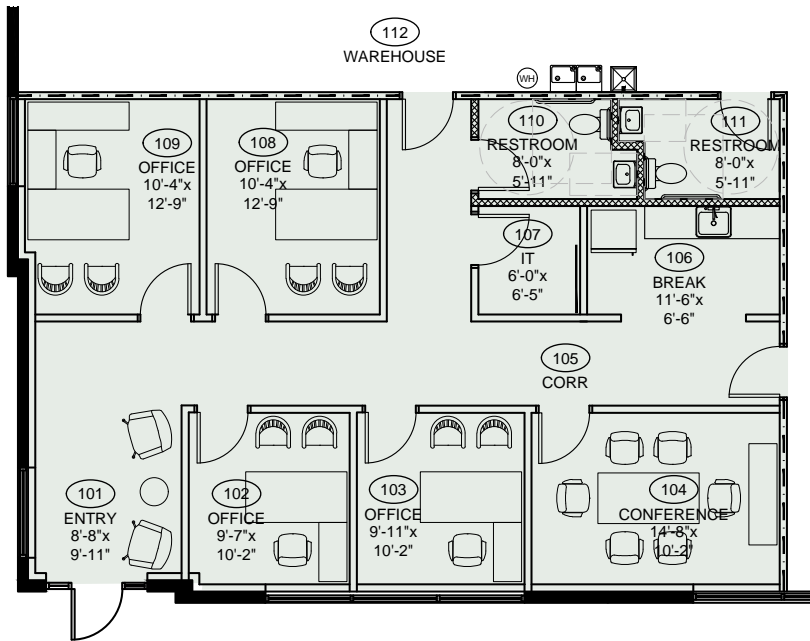


## US-64 HIGHWAY

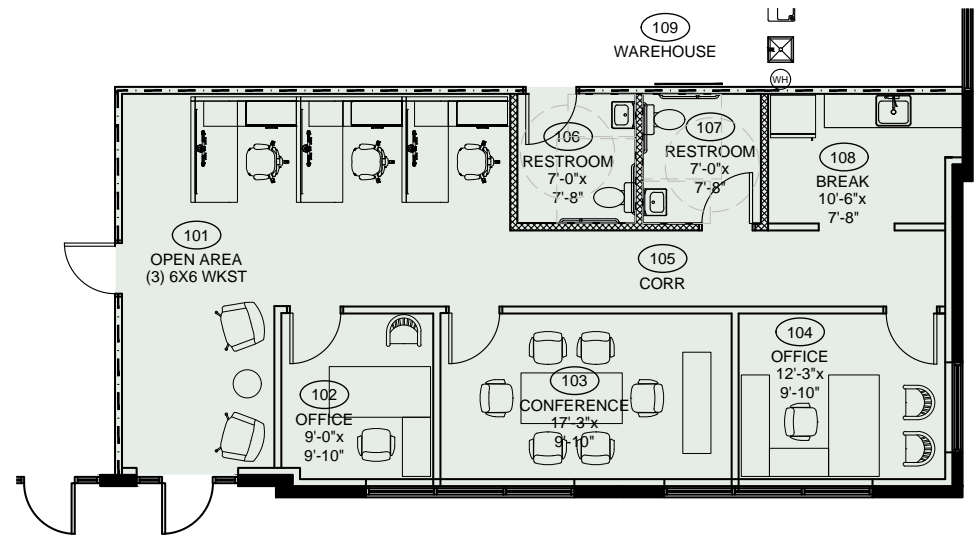
<b>Address</b>	1485 Goodwin Road   Apex, NC	<b>Dock-High Doors</b>	Thirty-Six (36) doors   9' x 10'	<b>Dimensions</b>	105' x 750'
<b>Available SF</b>	±7,400 SF - 78,750 SF	<b>Dock Knock-Outs</b>	Ten (10) expandable to 10' x 12'	<b>Truck Court</b>	150' shared loading court
<b>Building SF</b>	78,750 SF	<b>Drive-In Doors</b>	Two (2) ramps   12' x 14'	<b>Exterior</b>	Masonry & Glass
<b>Office SF</b>	1,203 SF - 1,355 SF or Build to Suit	<b>Dock Equipment</b>	Per tenant specifications	<b>Auto Parking</b>	2.0/1,000 SF
<b>Column Spacing</b>	35' wide (typ.)	<b>Sprinkler</b>	ESFR	<b>Zoning</b>	Tech/Flex (TF-CZ)   Town of Apex
<b>Bay Size</b>	±3,717 SF (typ.)	<b>Power</b>	277/480 volt	<b>Site Size</b>	6.11 acres
<b>Clear Height</b>	24'	<b>Floor Thickness</b>	6" concrete slab	<b>Available</b>	June 2026   Ready for Tenant Upfit

# Spec Office Suites

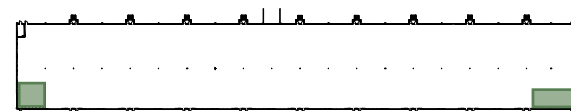
BUILDING 1 - SUITE 101 & 121



**1,355 SF**  
Suite 101



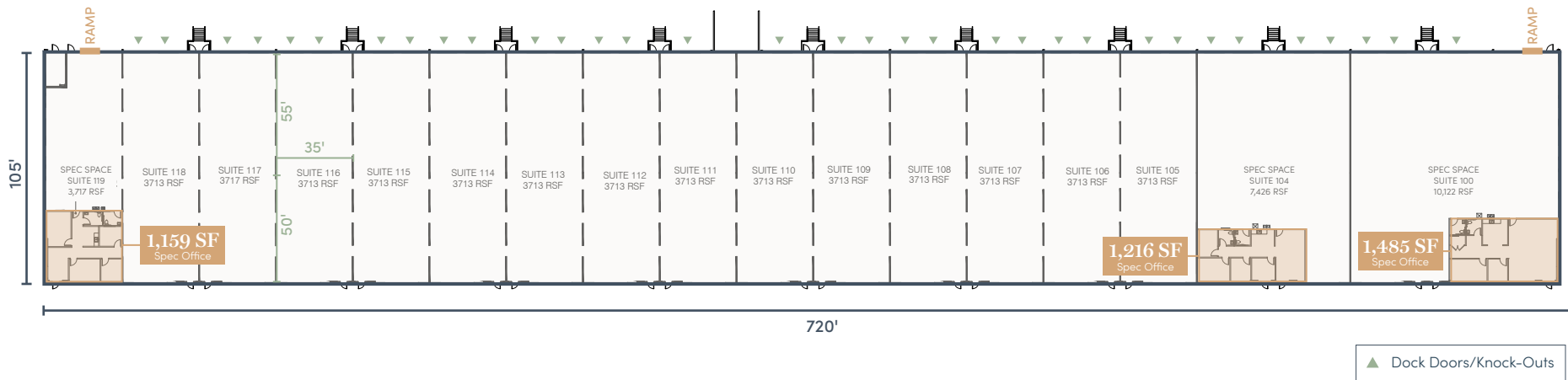
**1,203 SF**  
Suite 121



# Building 2

±7,400 SF - 75,600 SF AVAILABLE

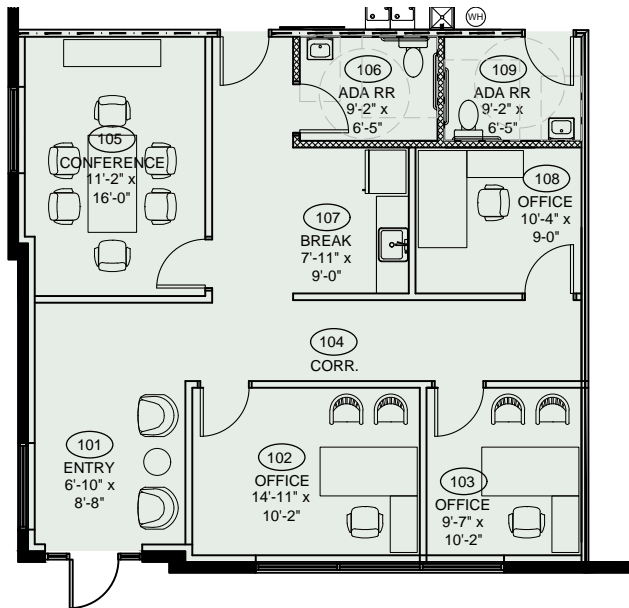
## SHARED TRUCK COURT



<b>Address</b>	1475 Goodwin Road   Apex, NC	<b>Dock-High Doors</b>	Thirty-Three (33) doors   9' x 10'	<b>Dimensions</b>	105' x 720'
<b>Available SF</b>	±7,400 SF - 75,600 SF	<b>Dock Knock-Outs</b>	Nine (9) expandable to 10' x 12'	<b>Truck Court</b>	150' shared loading court
<b>Building SF</b>	75,600 SF	<b>Drive-In Doors</b>	Two (2) ramps   12' x 14'	<b>Exterior</b>	Masonry & Glass
<b>Office SF</b>	1,159 SF - 1,485 SF or Build to Suit	<b>Dock Equipment</b>	Per tenant specifications	<b>Auto Parking</b>	2.0/1,000 SF
<b>Column Spacing</b>	35' wide (typ.)	<b>Sprinkler</b>	ESFR	<b>Zoning</b>	Tech/Flex (TF-CZ)   Town of Apex
<b>Bay Size</b>	±3,713 SF (typ.)	<b>Power</b>	277/480 volt	<b>Site Size</b>	6.11 acres
<b>Clear Height</b>	24'	<b>Floor Thickness</b>	6" concrete slab	<b>Available</b>	June 2026   Ready for Tenant Upfit

# Spec Office Suites

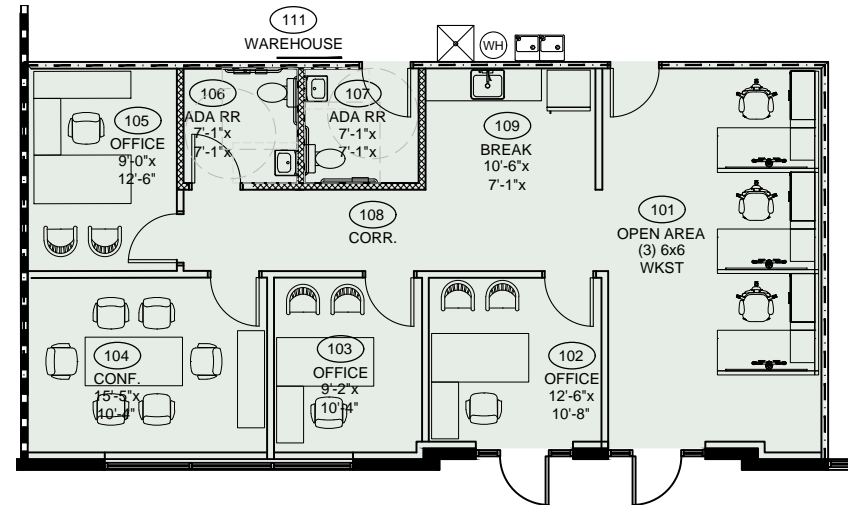
BUILDING 2 - SUITE 101, 116, 120



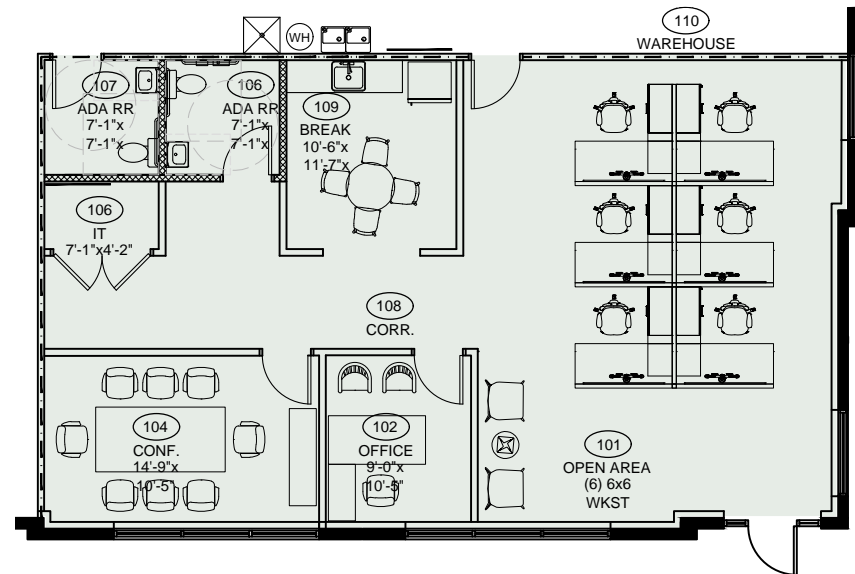
1,159 SF  
Suite 101



KEY PLAN

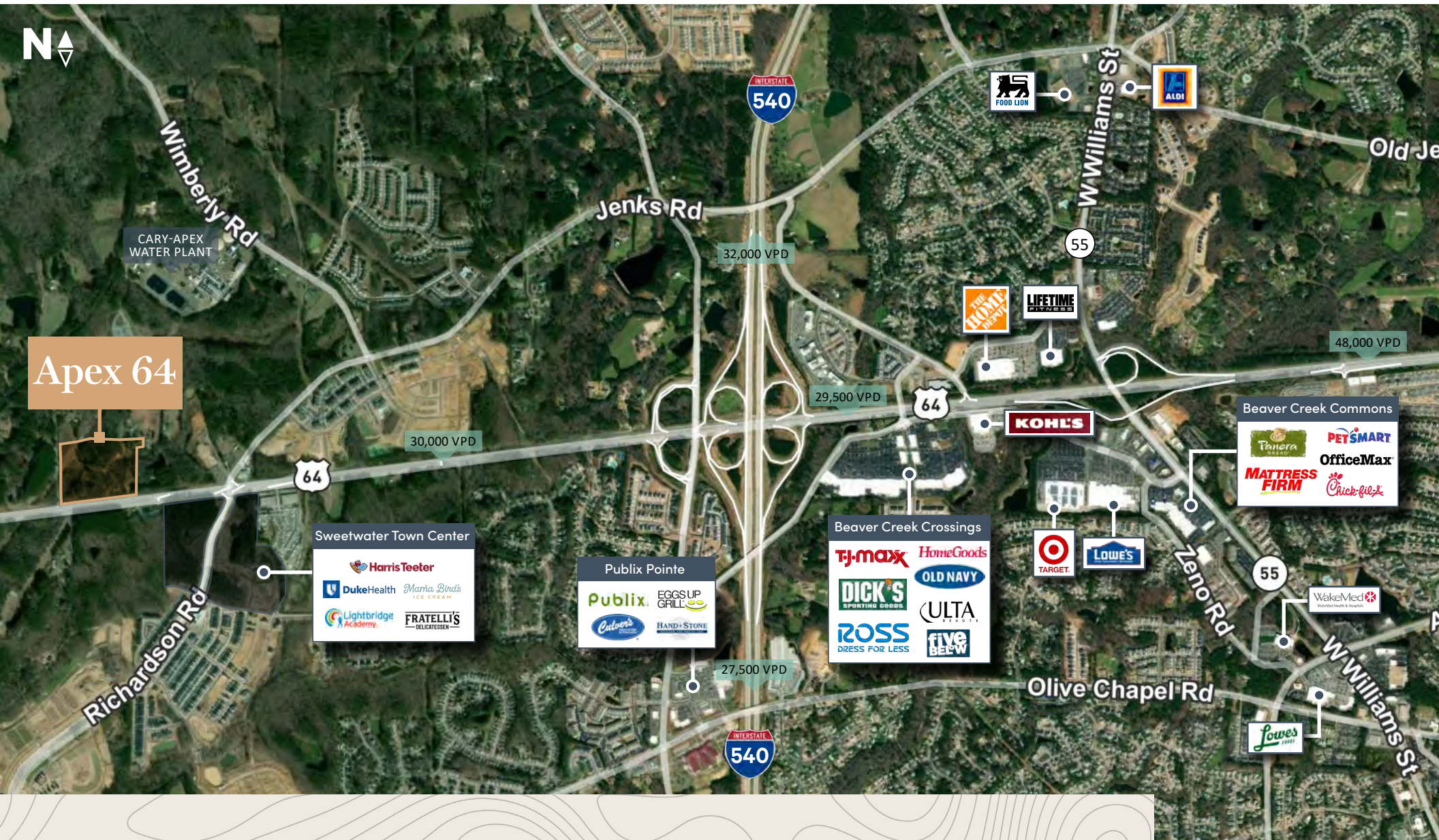


1,216 SF  
Suite 116



1,485 SF  
Suite 120

# Nearby Amenities



# Prime Location & Access

## INTERSTATES

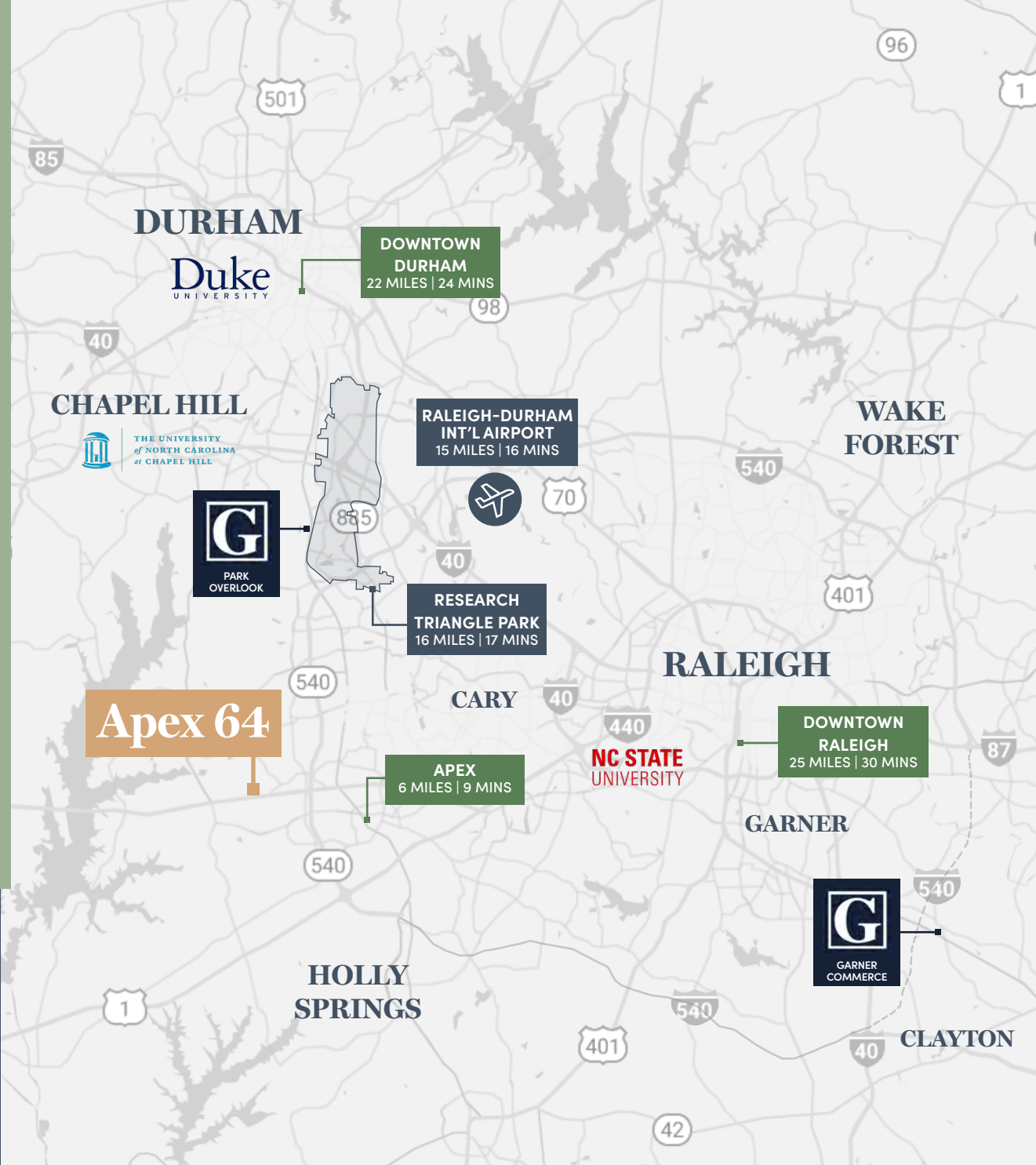
## DISTANCE

 U.S. Hwy 64	< 0.5 Mile
 Interstate 540	2.0 Miles
 U.S. Hwy 1	8.5 Miles
 Interstate 40	12 Miles
 Interstate 440	12 Miles

## AIRPORTS

## DISTANCE

Raleigh-Durham International	15 Miles
Piedmont Triad International	76 Miles
Charlotte Douglas International	153 Miles



# APEX 64

1475 - 1485 GOODWIN ROAD | APEX, NC



## CONTACTS

**MICHAEL WALLACE, SIOR, CCIM**

Vice President

+1 919 831 8188

[michael.wallace@cbre.com](mailto:michael.wallace@cbre.com)

**JOHN HOGAN, III**

Senior Associate

+1 919 831 8264

[john.hogan@cbre.com](mailto:john.hogan@cbre.com)

© 2026 CBRE, Inc. All rights reserved. This information has been obtained from sources believed reliable but has not been verified for accuracy or completeness. CBRE, Inc. makes no guarantee, representation or warranty and accepts no responsibility or liability as to the accuracy, completeness, or reliability of the information contained herein. You should conduct a careful, independent investigation of the property and verify all information. Any reliance on this information is solely at your own risk. CBRE and the CBRE logo are service marks of CBRE, Inc. All other marks displayed on this document are the property of their respective owners, and the use of such marks does not imply any affiliation with or endorsement of CBRE. Photos herein are the property of their respective owners. Use of these images without the express written consent of the owner is prohibited.



**CBRE**