



SUMMERWIND

COMMONS IN CALIMESA

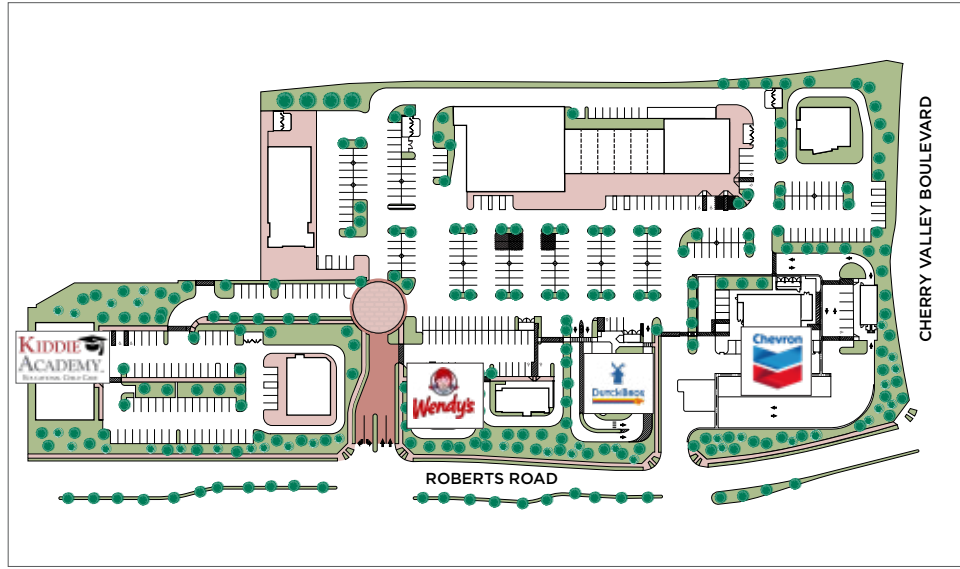


NEW RETAIL NEIGHBORHOOD SHOPPING CENTER

- JOIN THE FOLLOWING RETAIL TENANTS:



- FINISHED PADS IMMEDIATELY AVAILABLE:
GROCER, CAR WASH, RESTAURANT & MEDICAL/OFFICE
- DRIVE-THRU AVAILABLE (LIMITED)



1023-1254 Roberts Road
Calimesa, CA 92320



Now Delivering Pads

+10,000
UNITS
PROPOSED

89,000
VEHICLES PER DAY



24,000
VEHICLES PER DAY

CHERRY VALLEY BOULEVARD



PHASE II
PROPOSED FUTURE
RESIDENTIAL

K-8 SCHOOL
NOW OPEN



80
UNITS

246
UNITS

145
UNITS

162
UNITS

PALMER AVENUE

DESERT LAWN DRIVE

1,284
UNITS

SUMMERWIND COMMONS

SITE PLAN

SUMMERWIND
COMMONS

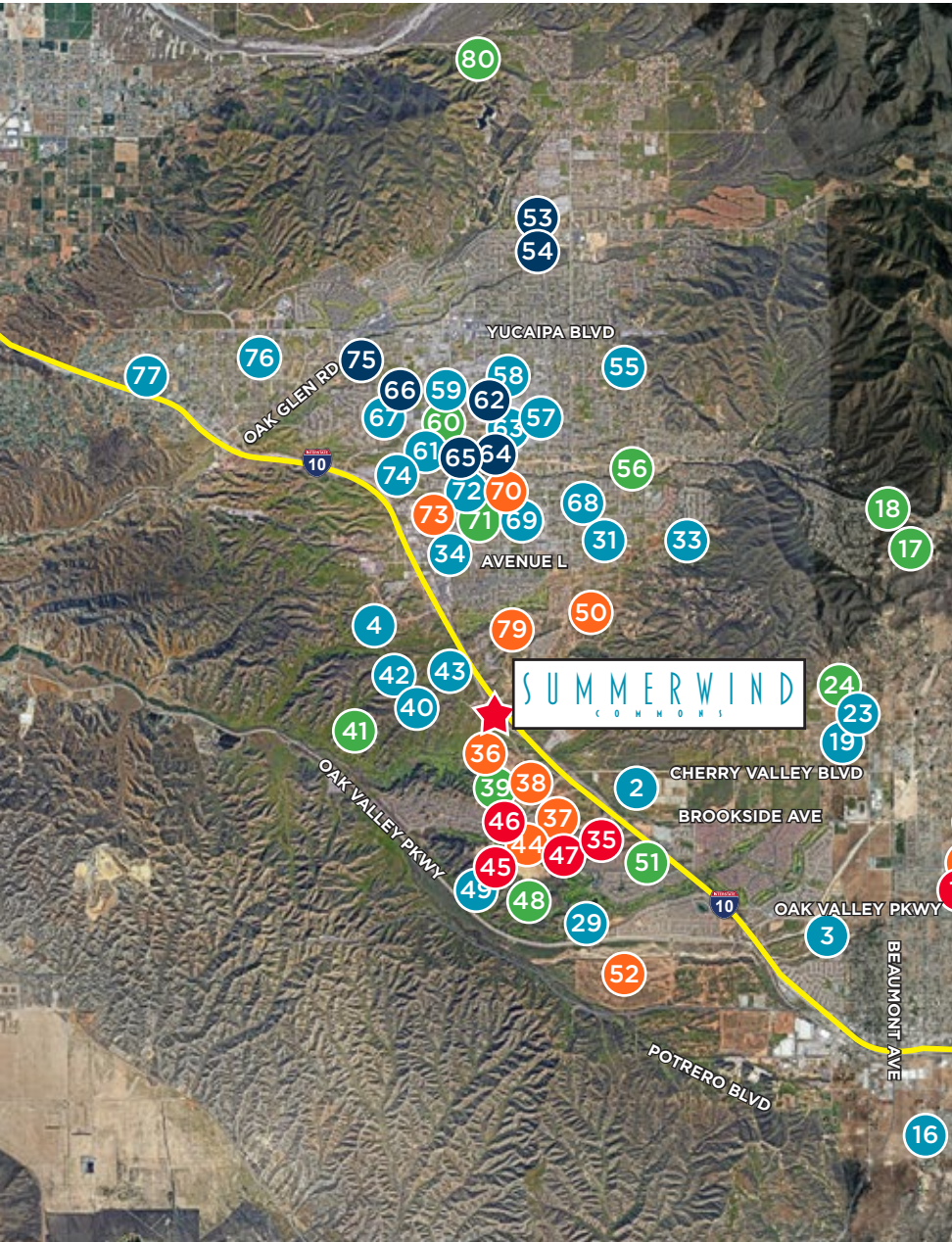
UPSCALE MASTER PLANNED COMMUNITY
IN A MAJOR GROWTH AREA

FREEWAY ORIENTED NEIGHBORHOOD CENTER WITH
TRAFFIC COUNTS SURPASSING 89,000 CARS PER DAY ON
INTERSTATE 10



TRADE AREA HOUSING DEVELOPMENTS

SUMMERWIND
COMMONS



RECENTLY BUILT			
#	PROJECT NAME	TYPE	TOTAL UNITS
6	Pardee Homes	SF	112
11	Pardee Homes	SF	102
12	Pardee Homes	SF	195
35	Plantation on the Lake		557
45	Dr Horton	SF	130
46	William Lyon Homes	SF	53
47	KB Homes	SF	94

UNDER CONSTRUCTION			
#	PROJECT NAME	TYPE	TOTAL UNITS
1	K.Hovnanian	Mix	1,890
7	Pardee Homes	SF	112
8	Pardee Homes	SF	97
9	Pardee Homes	SF	142
10	Pardee Homes	SF	88
13	Pardee Homes	SF	704
14	Pardee Homes	SF	87
36	Lennar	SF	246
37	Dr Horton Express	SF	162
38	Meritage Homes	SF	80
44	Woodside Homes	SF	138
50	Dr. Horton Express	SF	793
52	William Lyon Homes	SF	981
70	Wayne Simmons	Apts	32
73	Eagle Housing	Apts	96
79	Mastercraft Homes	SF	211

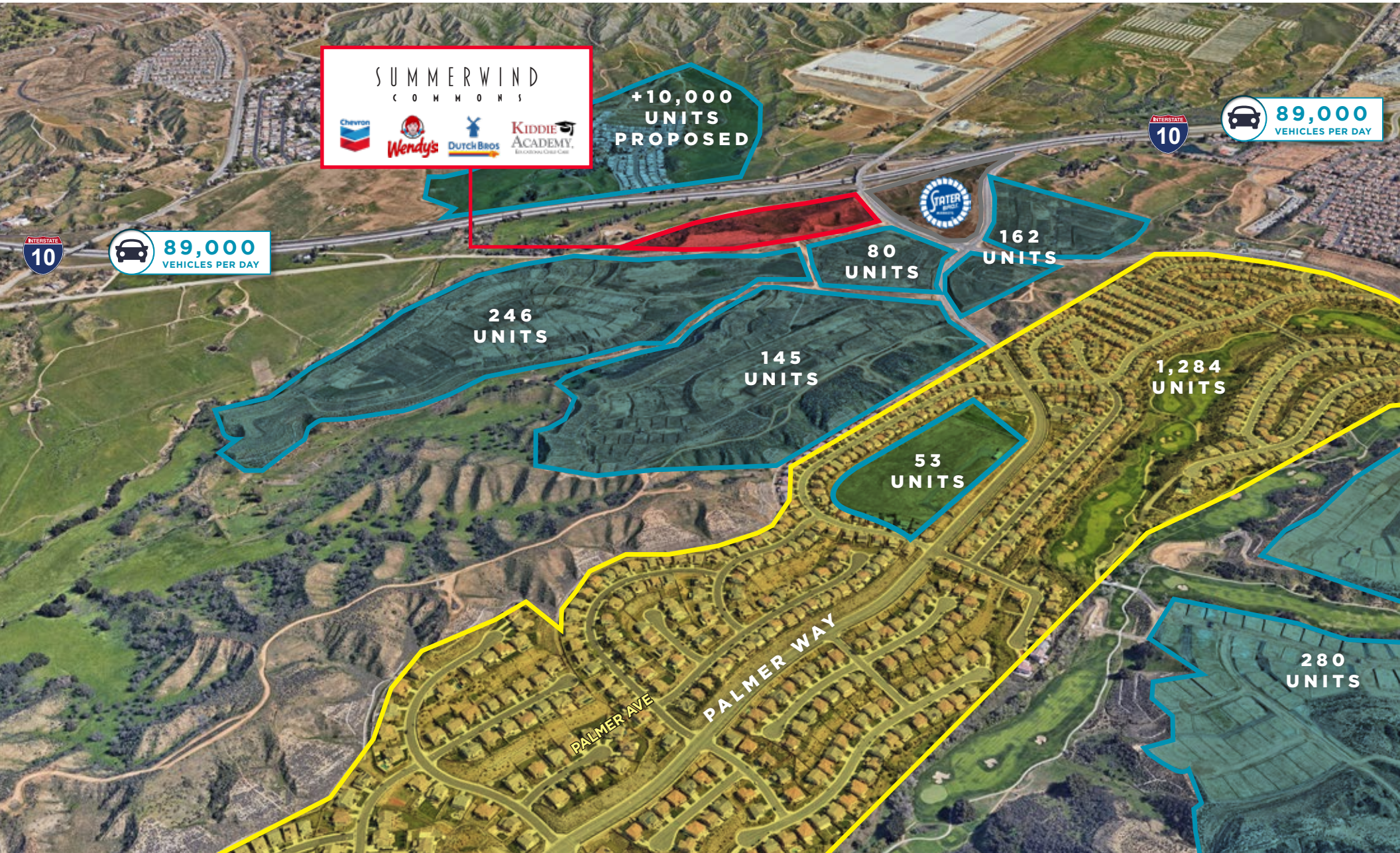
FINAL MAP APPROVAL			
#	PROJECT NAME	TYPE	TOTAL UNITS
5	Pardee Homes	SF	103
15	Pardee Homes	Mix	949
17	Dickinson & Son	SF	34
18	Dickinson & Son	SF	21
21	RMG Residential 2010, LLP	SF	39
22	Halem	SF	17
24	Riverside County Subdivision	SF	58
27	Fiesta Development	SF	303
28	Vicseth Construction	SF	31
39	Richmond American Homes	SF	145
41	San Gorginio Land LLC / Agent Management	SF	646
48	Dr Horton	SF	200
51	Black Oak Development	Condo	477
56	Land Engineering Consulting	SF	22
60	Green Maple 2, LLC	Condo	33
71	Rich Yucapia III, LLC	SF	108
78	Magnolia Gardens	SF	125
80	San Bernardino County Subdivision	SF	55

TENTATIVE MAP APPROVAL			
#	PROJECT NAME	TYPE	TOTAL UNITS
2	City Venture	SF	571
3	Centerstone Communities	SF	403
4	Betek	Mix	3,450
16	Beaumont Subdivision	SF	95
19	Anwar Markos	SF	24
20	Linc Housing	Apts	24
23	Rafik Morgan	SF	18
25	St. Boniface	SF	143
26	Diversified Pacific Communities	SF	98
29	Tournament Hills 3, LLC	SF	279
31	Douglas Street LLC	SF	18
32	John and Diana Hanna	Apts	80
33	Far West Industries	SF	45
34	Calimesa Meadows II, LLC	SF	32
40	San Gorginio Land LLC/Agent Management	SF	849
42	San Gorginio Land LLC/Agent Management	SF	823
43	San Gorginio Land LLC/Agent Management	SF	734
49	SDC Fairway Canyon LLC	SF	1,300
55	MBTK Homes, LLC	SF	21
57	Moss Family Foundation	Apts	30
58	Crafton Communities	Apts	16
59	Premium Land Development	SF	21
61	TMCI Yucaipa, LLC	SF	40
63	MBTK Homes, LLC	SF	18
67	BoWu	Apts	26
68	Land Engineering Consultants	SF	18
69	Nova Homes	Condo	68
72	MBTK Homes, LLC	Condo	57
74	Uttampar, Inc	SF	29
76	Premium Land Development	Condo	56
77	Ladruz Family Partnership	SF	19

DESIGN PLAN CHECK			
#	PROJECT NAME	TYPE	TOTAL UNITS
30	Diversified Pacific Communities	SF	310
53	Lakeview MHP LLC	SF	30
54	Oak Creek LLC	SF	200
62	Steve Copelan	Condo	18
64	Wayne Simmons	Apt	18
65	RC Hobbs Companies	SF	43
66	James & Paula Ferguson	Apts	33
75	Bo Wu	Apts	16

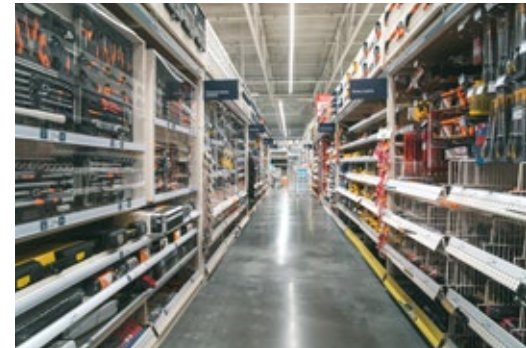
NEIGHBORHOOD AERIAL

SUMMERWIND COMMONS



ANCHOR & SHOPS OPPORTUNITY

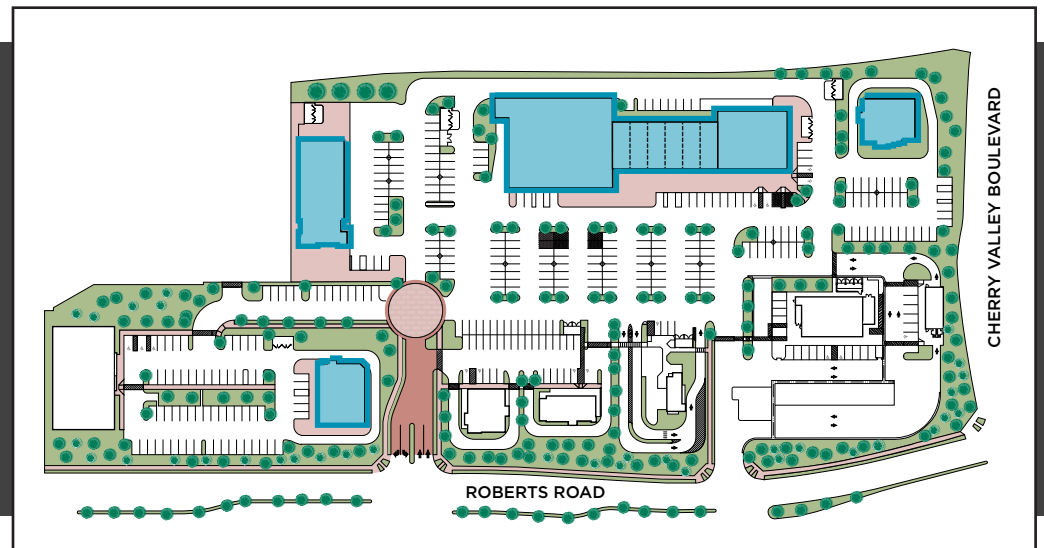
SUMMERWIND
COMMONS



ANCHOR & SHOPS

Anchor & Shops Opportunity

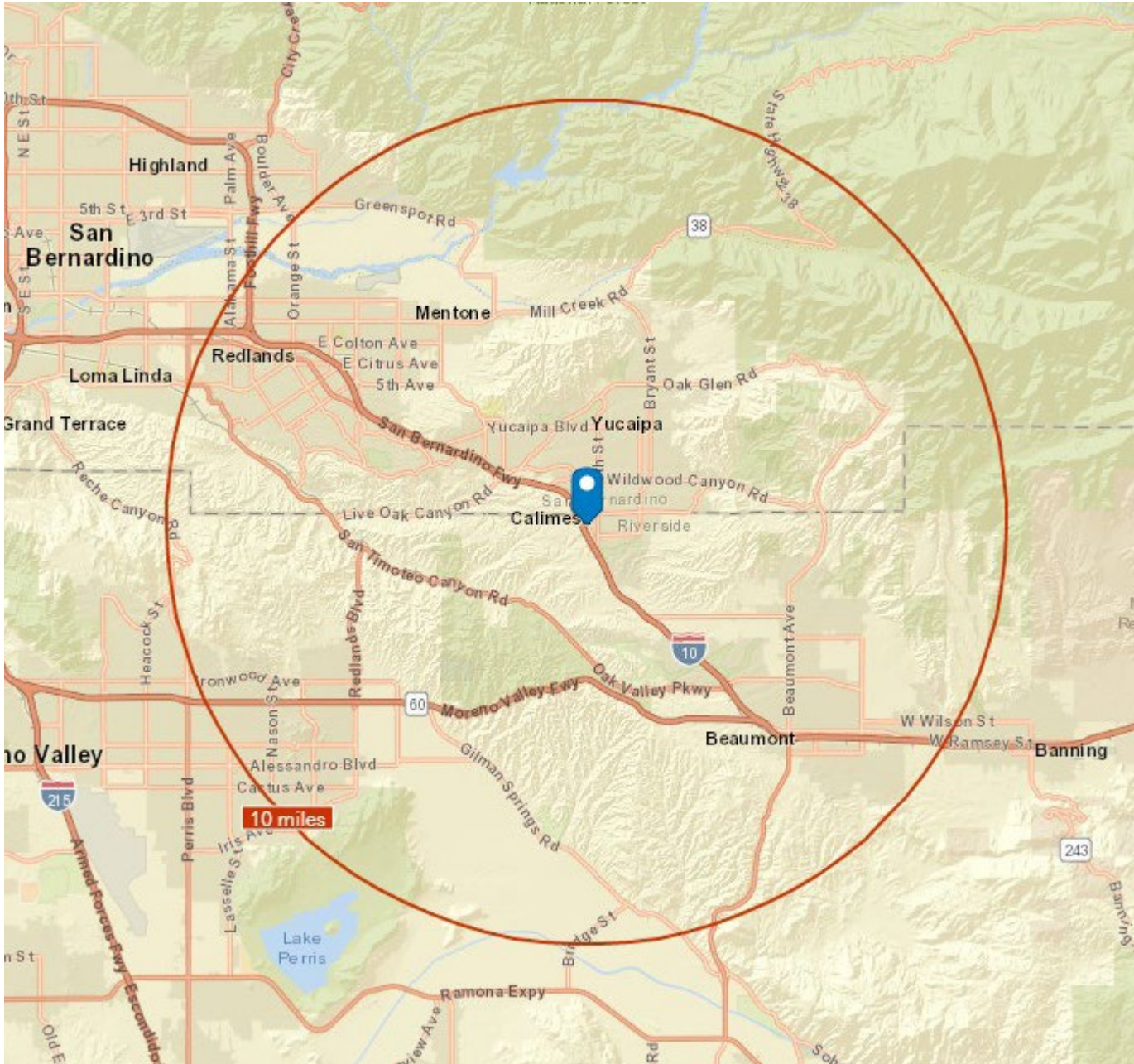
Up to ±25,000 SF



SUMMERWIND COMMONS

DEMOGRAPHICS

SUMMERWIND
COMMONS



TOTAL EMPLOYEES

67,478
2025



**TOTAL RESIDENTIAL
POPULATION**

288,328 **299,928**
2025 2030



**AVERAGE HOUSEHOLD
INCOME**

\$126,662 **\$138,140**
2025 2030

SUMMERWIND

C O M M O N S



CHAD R. IAFRATE, CCIM

Executive Director

760-431-4234

chad.iafrate@cushwake.com

CA License #01329943

VINCENT PROVENZANO

Director

760-431-4212

vince.provenzano@cushwake.com

CA License #01926894

JOHN JENNINGS

Vice President

909-406-4000

jjennings@catalystretail.com

CA License #02025511



CUSHMAN &
WAKEFIELD



12830 El Camino Real, Suite 100
San Diego CA 92130 | USA