



Summerdale Business Park
Professional Office Suite
4628 Summerdale Blvd., Suite B
Pace, FL

For More Information:

Jenny Pittman Broker Associate
850 207 7900
jpittman@naipensacola.com

Tina Tortomase, Commercial Agent
850 384 5818
ttortomase@naipensacola.com

For Lease

1,062 SF
Professional Office Space
\$2,154.09 per month all in
\$5.84 PSF NNN FEE
NNN Lease
3-5 YR Term

NAIPensacola

Property Summary

4628 Summerdale I Suite B

Positioned within a quiet, well-maintained professional business park, this 1,062 SF suite offers a flexible and efficient layout ideal for small businesses, professional services, or satellite offices. The floorplan includes three private offices, an open workspace designed to accommodate two desks, a full kitchen, an ADA-compliant restroom, and ample parking. Located just off Summerdale Blvd, this office provides direct access to Pace's vibrant commercial corridor, which continues to see rapid growth and residential expansion. The surrounding area boasts a strong population base and a healthy mix of national retailers, medical services, and professional offices, making this an exceptional location for businesses seeking convenience and exposure.

Marketing Highlights

- Suite Size: 1,062 SF
- Layout: Three private offices, open work area, full kitchen, ADA restroom
- Location: Professional business park off Summerdale Blvd in Pace, FL
- Accessibility: Easy access to Hwy 90 and major Pace/Milton business hubs
- Ideal Use: Office, professional services, medical, or tech
- Surrounding Area: High-growth market with strong retail, restaurant, and service presence

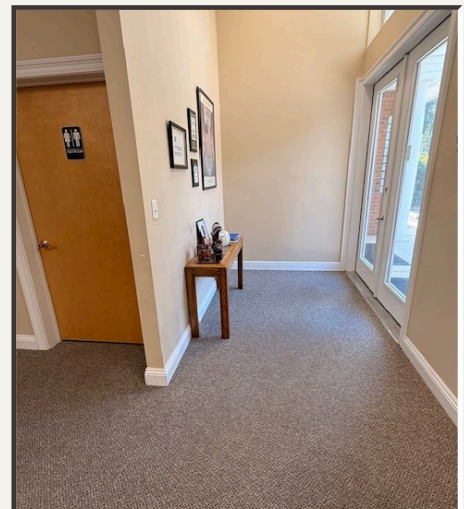
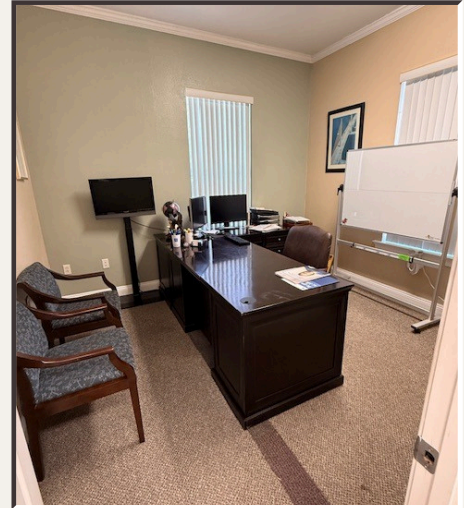
For more information

Jenny Pittman

e: jpittman@naipensacola.com
m: 1 850 207 7900

Tina Tortomase

e: ttortomase@naipensacola.com
m: 1 850 384 5818



4628 Summerdale Suite B

Well-appointed office suite offers a turnkey solution in one of Pace's most accessible and desirable business corridors. Located within a quiet, established business park just off Summerdale Boulevard, the space is ideal for service-based professionals seeking a functional layout and convenience in a high-growth market.

LEASE SUMMARY

Lease Type - NNN

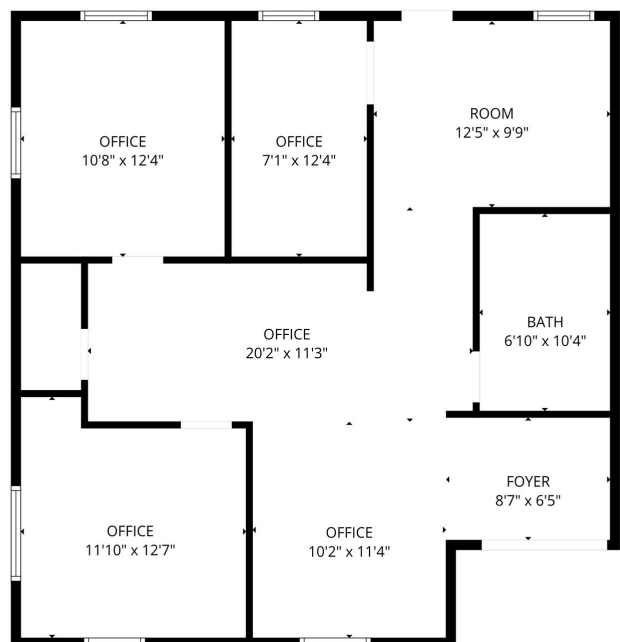
Base Rate - \$18.50

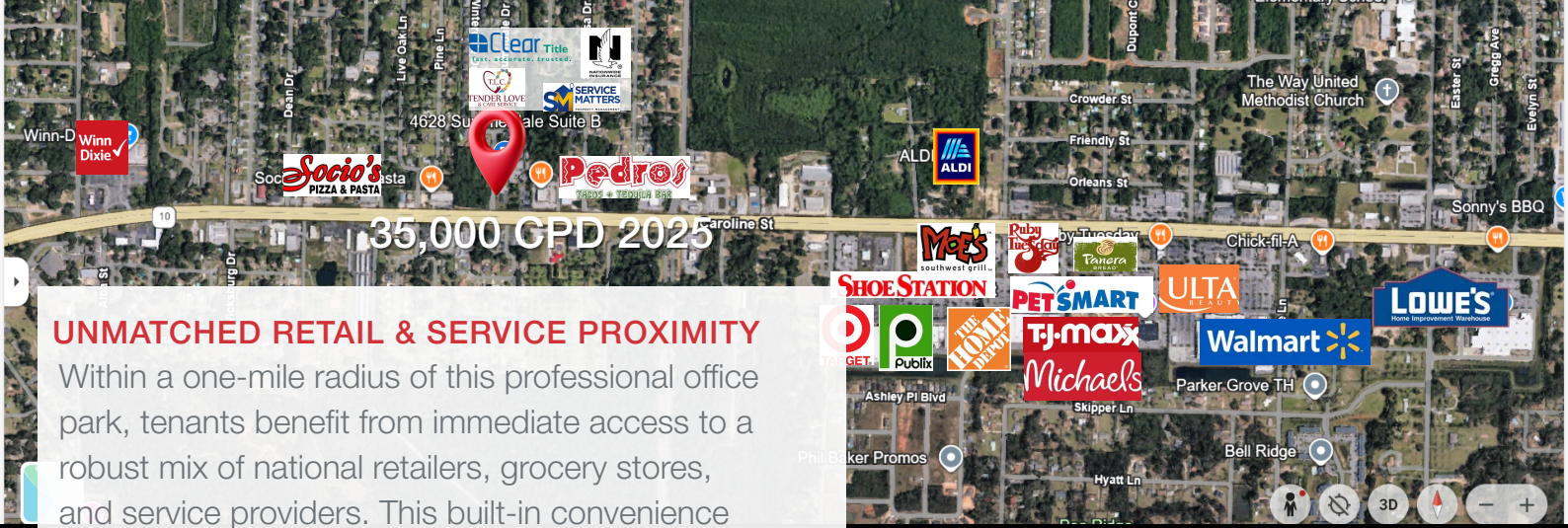
NNN \$5.84PSF

Lease Price PSF \$24.34 **\$2,154.09 per month**

Pace, FL Market Overview

- Pace is one of the fastest-growing communities in the Florida Panhandle, strategically located in Santa Rosa County just minutes from Pensacola. With direct access to U.S. Highway 90 and proximity to the Pensacola International Airport.





35,000 CPD 2023

UNMATCHED RETAIL & SERVICE PROXIMITY

Within a one-mile radius of this professional office park, tenants benefit from immediate access to a robust mix of national retailers, grocery stores, and service providers. This built-in convenience offers strong synergy for professional office users and client-based services.

RETAIL & BIG BOX NEIGHBORS:

- Walmart Supercenter
- Home Depot
- Lowe's
- Michaels
- Target
- TJ Maxx
- Publix
- Aldi

This immediate access to shopping and services makes the location highly desirable for both employees and clientele.

STRONG ECONOMIC & POPULATION GROWTH

Pace's growing economy is supported by key industries including:

- Healthcare
- Retail & Consumer Services
- Education
- Emerging Technology & Service Sectors

With ongoing residential and commercial development, this area continues to attract investment and new business ventures.

TRAFFIC AND VISIBILITY

- Traffic Count: Approx. 35,000 CPD directly in front of the business park
- High visibility and easy access from major routes, including U.S. Highway 90
- Well-established surrounding population base, ensuring daily activity and strong drive-by exposure

NAIPensacola

Summerdale Business Park
 Professional Office Suite
 4628 Summerdale Blvd., Suite B
 Pace, FL

For Lease

1,062 SF
 Professional Office Space
 \$2,154.09 per month all in
 NNN Lease
 3-5 YR Term

Tina Tortomase, Commercial Agent
 850 384 5818
 ttortomase@naipensacola.com

Jenny Pittman Broker Associate
 850 207 7900
 jpittman@naipensacola.com