

BASIS OF BEARING

Parcel Map, Doc No. 1307, the south line of the NE 1/4, NW 1/4 of Section 7, T. 19N., R. 25E., M.D.M. Bearing taken as N 89°45'34" W.

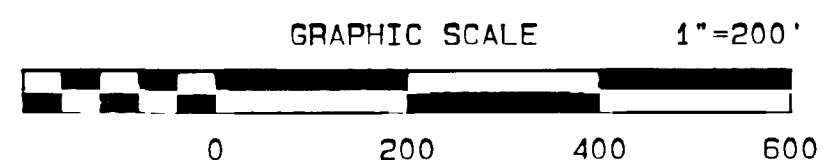
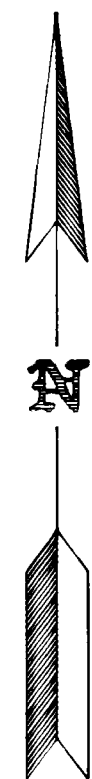
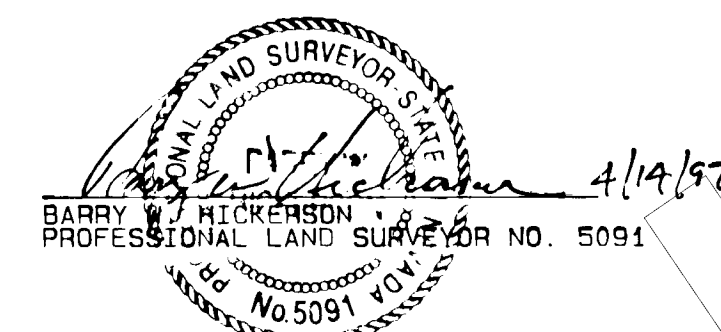


TABLE "A"

PARCEL #	GROSS AREA	NET AREA
PARCEL 1	47,403 SQ. FT.	43,904 SQ. FT.
PARCEL 2	47,403 SQ. FT.	43,904 SQ. FT.
PARCEL 3	47,403 SQ. FT.	43,904 SQ. FT.
PARCEL 4	36,783 AC	36,559 AC

SURVEYOR'S CERTIFICATE

- I, BARRY W. HICKERSON, a Professional Land Surveyor registered in the State of Nevada, certify that:
- This plat represents the results of a survey conducted under my direct supervision at the instance of DONALD KLUZNIK
 - The lands surveyed lie within A PORTION OF THE NW 1/4 OF SECTION 7 T. 19 N., R. 25 E., M.D.M. and the survey was completed on 4/1/97
 - This plat complies with the applicable state statutes and any local ordinances in effect on the date that the governing body gave its final approval.
 - The monuments depicted on the plat are of the character shown and occupy the positions indicated and are of sufficient number and durability.



OWNER'S CERTIFICATE

This is to certify that the undersigned, DONALD KLUZNIK is the owner of the tract of land represented on this plat and has consented to the preparation and recordation of this plat and that the same is executed in compliance with and subject to the provisions of NRS Chapter 278.

The access and utility easements as shown hereon are hereby granted.

Donald Kluznik
DONALD KLUZNIK Date

**STATE OF NEVADA
COUNTY OF WASHOE**

On this 14th day of April, 1997, personally appeared before me, a Notary Public in the County of Lyon, Donald Kluznik who acknowledged to me that he executed the above instrument. In witness whereof, I hereunto set my hand and affix my official seal on the date and year first above written.

Rae Ann Loving
NOTARY PUBLIC

PLANNING COMMISSION CERTIFICATE

This Parcel Map was approved by Lyon County Planning Commission on the 24 day of April, 1996

Dave Small
CHAIRMAN DATE

COUNTY CLERK'S CERTIFICATE

I, Marian Pinkerton, Lyon County Clerk/Treasurer hereby certify that there are no liens for unpaid State, County City or local taxes or special assessments except those not due and owing on property the subject of this map.

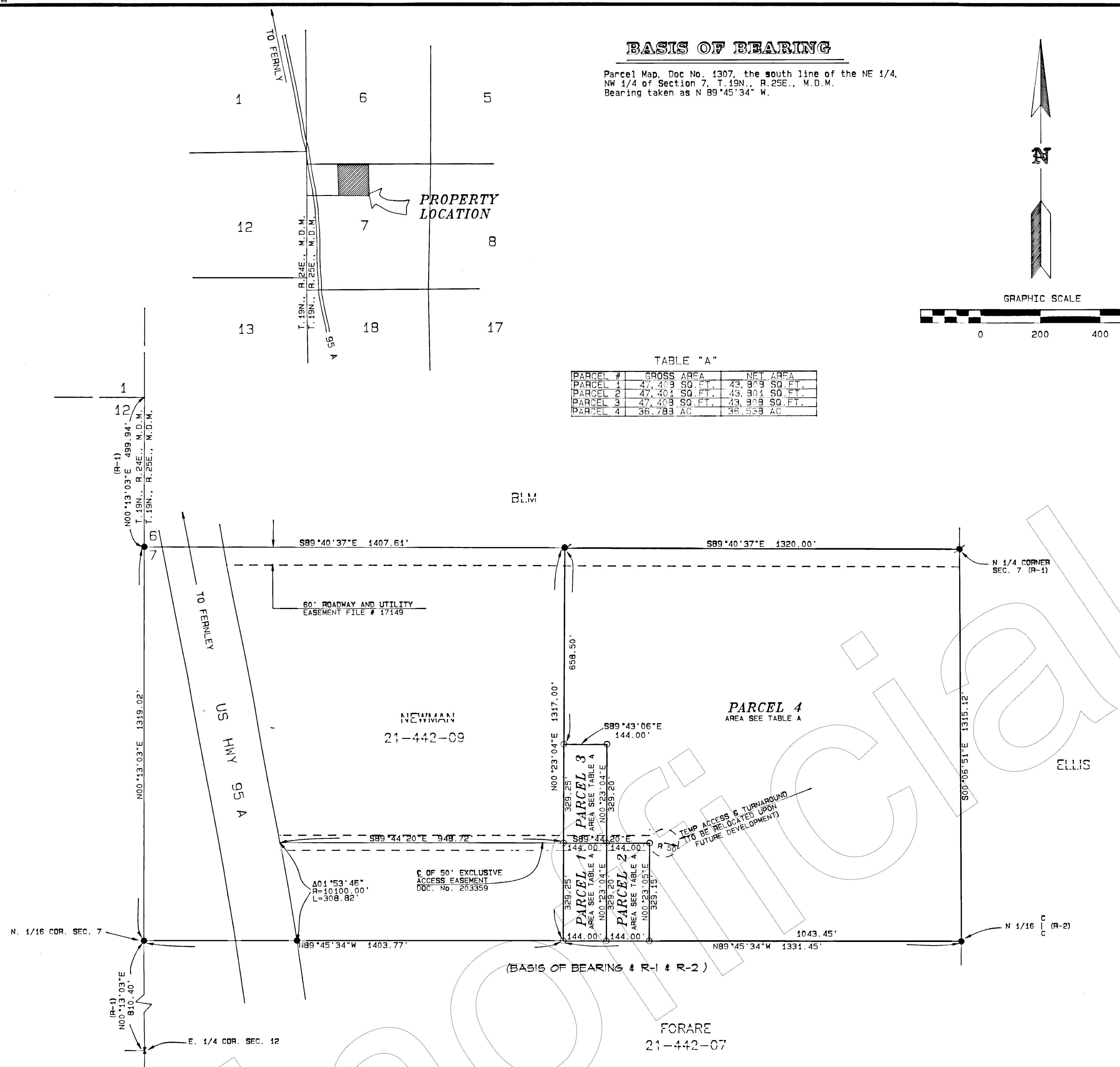
Marian Pinkerton
Marian Pinkerton Date
Lyon County Clerk/Treasurer

COUNTY ENGINEER'S CERTIFICATE

I, Paul Lumos, Lyon County Engineer, have examined this map and am satisfied that the map is technically correct, that all provisions of the law have been met.

Paul M. Cavolick
for Paul Lumos Date
Lyon County Engineer CIVIL

TOTAL AREA: 40.05 ± ACRES



NOTES

- The city, county, school district and special districts are not obligated to furnish any service, specifically mentioning fire protection and roads, to the land so divided, and that any public utility may be similarly free of obligation.
- Acceptance by Lyon County of this parcel map is not a commitment that any or all of the lots are eligible for a county building permit.
- Roads shown upon this map will not be eligible for county maintenance until the roadways are improved (at no cost to the county) to public maintenance road standards approved by the County Commissioners and in effect at such time that the roadways are considered for acceptance into the county's road system.
- Public Utility and Cable T.V. easements are hereby granted as follows: 7.5' along street side of parcels; and 5.0' along side and rear lines.

REFERENCES

- R-1 Record of Survey Map Doc. No. 1060 Lyon County Official Records.
- R-2 Parcel Map Doc. No. 1307 Lyon County Official Records.

LEGEND

- = Set 5/8" Rebar and Cap P.L.S. 5091
- = Found 5/8" Rebar and Cap R.L.S. 2371
- = Found Rebar No Cap
- × = Dimension Point Only

PARCEL MAP
for
DONALD KLUZNIK
BEING A PORTION OF THE NW 1/4, SEC. 7,
T. 19N., R. 25E., MOUNT DIABLO MERIDIAN

LYON COUNTY, NEVADA
TRI STATE SURVEYING, LTD. JOB #95000.01K1U2
1925 E. PRATER WAY SPARKS, NEVADA 89434 (702) 358-9491 • FAX # 358-3664

SHEET 1 OF 1

FILE NO. 205071
FILED FOR RECORD AT THE REQUEST OF Donald Kluznik ON THIS 6th DAY OF May 1997 AT 4:50 MIN PAST 11 O'CLOCK, A.M. OFFICIAL RECORDS OF Lyon COUNTY, NEVADA
Nancy M. Carr COUNTY RECORDER
By: Kathy A. Hayden DEPUTY
FEE \$ 17.00

205071 5/6/97 #3220