

ATLANTIC HOUSE

TONGWELL MILTON KEYNES



TO LET 54,408 SQ FT (5,055 SQ M)

REFURBISHED DISTRIBUTION / PRODUCTION FACILITY OVERLOOKING THE M1



FEATURES



30m approx deep secure yard



5.5m clear height



One level access loading door



Warehouse lighting



40KN/m² floor loading



59 car parking spaces



Double height reception area



Flexible layout with two office entrances



Offices fully refurbished



2.5 acre site







Rear store

One level access loading door

Yard approx 30m deep

Secure, gated access

39,200 sq ft Warehouse

Fully refurbished two storey offices

59 car parking spaces

MICHIGAN DRIVE

ACCOMMODATION

Warehouse	38,789 sq ft
Ground & First Offices	12,508 sq ft
Rear Store	3,111 sq ft
Total	54,408 sq ft

TENURE

Available on a new lease for a term to be agreed.

EPC

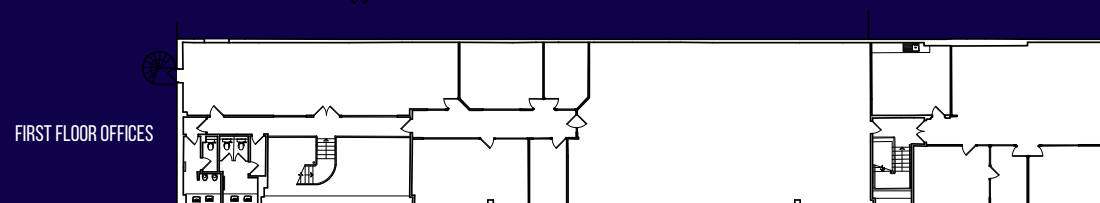
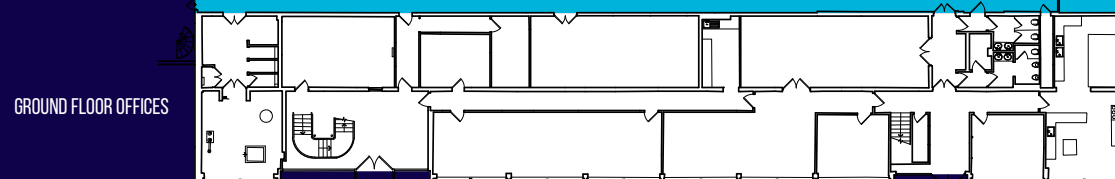
The property has an EPC rating of C(60).

RENT

£7.75 per sq ft exclusive.

BUSINESS RATES

For rates payable, refer to the Local Rating Authority.



LOCATION

- Junction 14, M1 - 5 minutes drive
- Prominent position on east side of Michigan Drive, Tongwell
- Milton Keynes station and city centre less than 10 minutes drive
- Highly accessible and popular location
- Volkswagen, Mercedes, Scania, Parcelforce, Volvo Trucks, Morrisons, John Lewis and Coca-Cola are all situated nearby

what3words: [///stammer.employer.give](https://www.what3words.com/#!/stammer.employer.give)



5 minutes
from M1 junction 14

ATLANTIC HOUSE

TONGWELL MILTON KEYNES

FURTHER INFORMATION

Available on application through the joint sole agents:



EAMON KENNEDY

07887 835815

eamon.kennedy@kirkbydiamond.co.uk

PAUL QUY

07917 268653

paul.quy@kirkbydiamond.co.uk



ROBERT SHACKLOCK

07860 472 750

robert@louchshacklock.com



JOSHUA GILBERY

07971 569 109

joshua.g@pearl-coutts.co.uk

Misrepresentation Notice

Louch Shacklock for themselves and for the Vendors or Lessors of this property whose agents they are give notice that: These particulars do not constitute, nor constitute part of, an offer or contract. All descriptions, dimensions, reference to condition, contamination and necessary permission for use and occupation and other details contained herein are for general guidance only and prospective purchasers, or tenants, should not rely on them as statements or representation of fact and must satisfy themselves as to their accuracy. Neither Louch Shacklock nor their employees or representatives have any authority to make or give any representation or warranty or enter into any contract in relation to the property. Rents and prices quoted in these particulars are subjected to VAT unless specifically stated otherwise. The reference to any mechanical or electrical equipment or other facilities of the property shall not constitute a representation (unless otherwise stated) as to its state or condition or that it is capable of fulfilling its intended function and prospective tenants/purchasers should satisfy themselves as to the fitness of such equipment for their requirements. 01/26