

FOR LEASE

888 E EASY ST

SIMI VALLEY, CA 93065





The property offers commercial flex space situated within Simi Valley's highly desirable business park corridor. The property offers excellent accessibility, strong regional connectivity, and flexible CPD (BP) zoning.

PROPERTY OVERVIEW

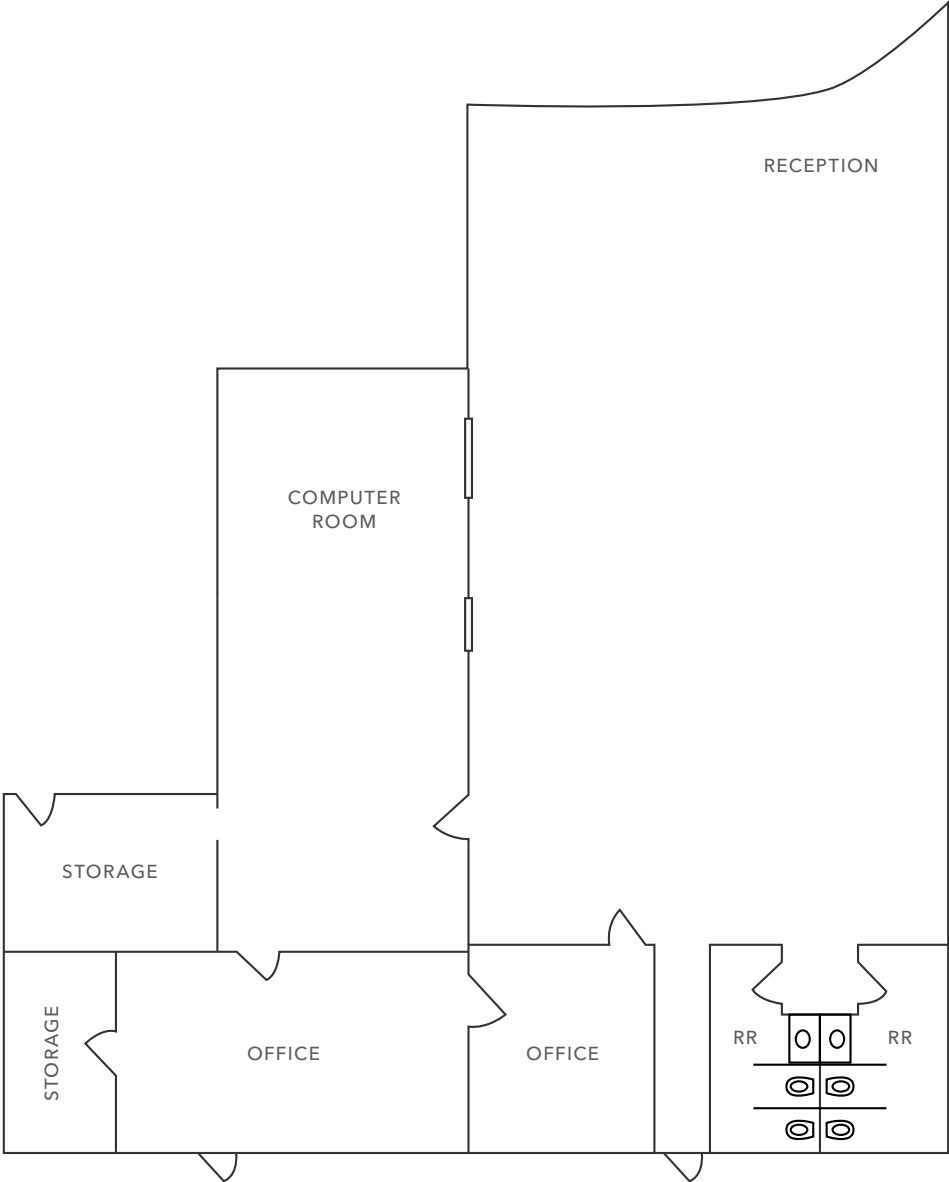
ADDRESS	888 E Easy St Simi Valley, CA 93065
ASKING LEASE RATE	\$1.50/SF MG
RENTABLE AREA	5,000 SF
YEAR BUILT	1989
ZONING	CPD (BP)

5,000 SF
AVAILABLE

CPD
ZONING



FLOOR PLAN









888 E EASY ST

*For more information on
this property, please contact*

BENTLEY MCKEAN, CCIM
805.626.7120 | 818.206.7480
bentley.mckean@kidder.com
LIC N° 02080641

JEFFREY M CROCKER
805.626.6550 | 818.867.9027
jeffrey.crocker@kidder.com
LIC N° 01457097

CRISTIAN CONTRERAS
805.626.6541 | 818.475.6054
cristian.contreras@kidder.com
LIC N° 02137897

This information supplied herein is from sources we deem reliable. It is provided without any representation, warranty, or guarantee, expressed or implied as to its accuracy. Prospective Buyer or Tenant should conduct an independent investigation and verification of all matters deemed to be material, including, but not limited to, statements of income and expenses. Consult your attorney, accountant, or other professional advisor.

