



±20.5 ACRES WITH HIGHWAY FRONTAGE

DRONE VIDEO



For Sale

±20.5 ACRES WITH HIGHWAY FRONTAGE

Justin Owen | 214-253-0797 | jowen@dominuscommercial.com

Contact Broker for Pricing

Tract A: ±15.42 Acres | Tract B: ±5.090 Acres
HCR 3360 - 3363, Hubbard, TX 76648



PROPERTY DETAILS:

- Price: Contact Broker
- Currently No Zoning Restrictions
- Located at the intersection of Highway 31 and CR 3363
- Minutes away from proposed data center
- Conveniently located close to downtown Hubbard & Lake Hubbard
- Close to Hwy 171 which connects Hillsboro and Mexia
- Ideal location for Truck Stop, Gas Station, Retail Services, Residential
- Approved for Tesla Charging Station
- Adjacent to the Ranch at City Lakes, a Single Family Master Planned Community

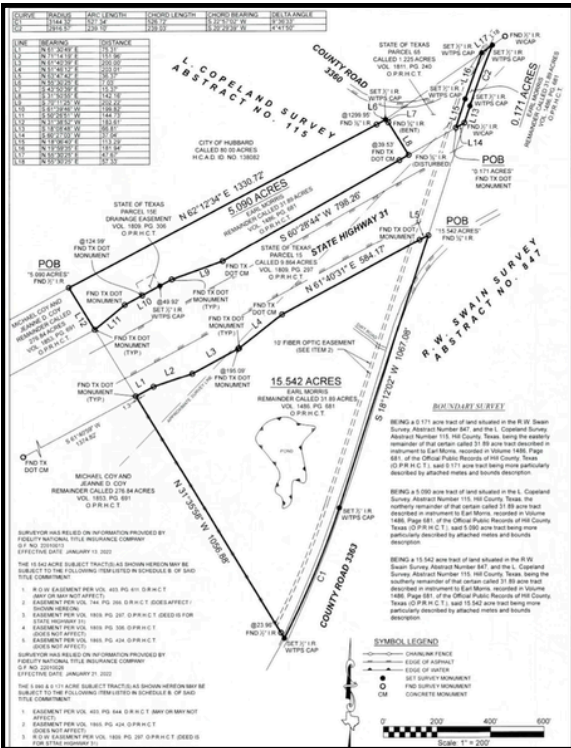
Land For Sale

HCR 3360 - 3363, Hubbard, TX 76648

TWO TRACTS TOTAL: ±20.5

POINTS OF INTEREST

- 1 Hubbard Lakes (1/2 mile to 1 mile)
- 2 Hubbard High School (1 mile)
- 3 Hubbard Livestock Markets (3 miles)
- 4 Westworld Country Inn (1 3/4 mile)
- 5 Downtown Hubbard (2 1/4 mile)
- 6 Waco (30 miles)
- 7 Corsicana (26 miles)
- 8 Mexia (23 miles)
- 9 Ranches at City Lakes
- 📍 3 Tesla supercharger sites within ± 27 miles



Justin Owen | 214.253.0797 | jowen@dominuscommercial.com

Dominus Commercial || 214.941.9500
600 E Las Colinas Blvd, #130 || Irving, TX 75039

My Information About Brokerage Services

This document has been prepared by Dominus Commercial, Inc for advertising and general information only. Dominus Commercial makes no guarantees, representations or warranties of any kind, expressed or implied, regarding the information including, but not limited to, warranties of content, accuracy and reliability. Any interested party should undertake their own inquiries as to the accuracy of the information. Dominus Commercial excludes unequivocally all inferred or implied terms, conditions and warranties arising out of this document and excludes all liability for loss and damages arising there from. © 2026 Dominus Commercial, Inc. All rights reserved.