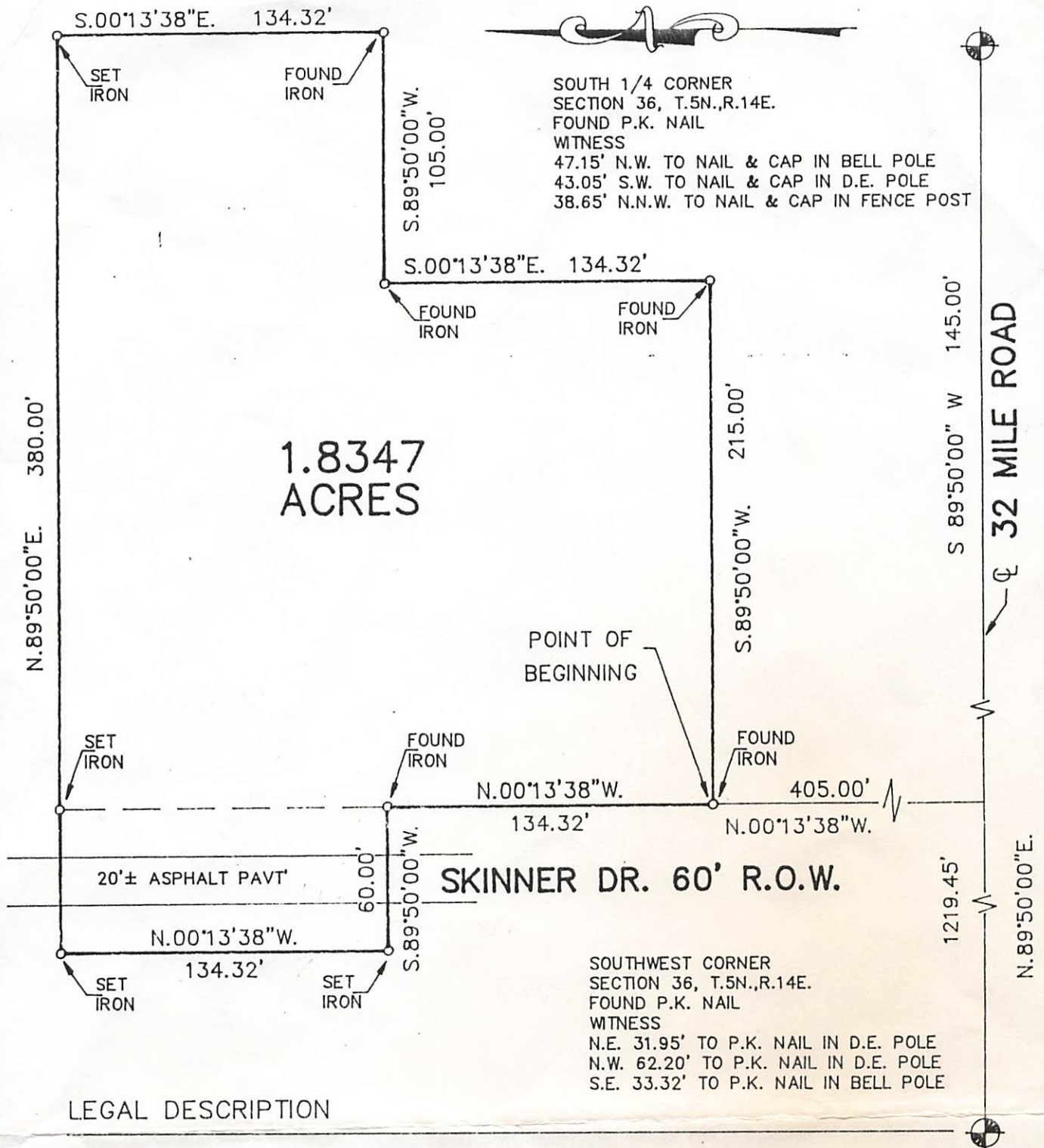


# SKETCH of SURVEY

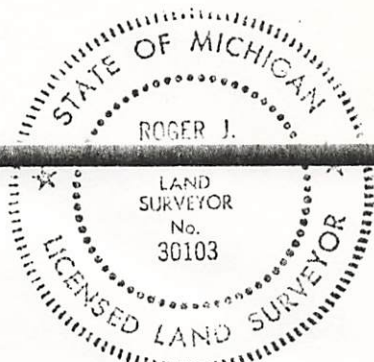


SOUTH 1/4 CORNER  
 SECTION 36, T.5N.,R.14E.  
 FOUND P.K. NAIL  
 WITNESS  
 47.15' N.W. TO NAIL & CAP IN BELL POLE  
 43.05' S.W. TO NAIL & CAP IN D.E. POLE  
 38.65' N.N.W. TO NAIL & CAP IN FENCE POST

SOUTHWEST CORNER  
 SECTION 36, T.5N.,R.14E.  
 FOUND P.K. NAIL  
 WITNESS  
 N.E. 31.95' TO P.K. NAIL IN D.E. POLE  
 N.W. 62.20' TO P.K. NAIL IN D.E. POLE  
 S.E. 33.32' TO P.K. NAIL IN BELL POLE

SCALE: 1"=60'  
 DATE: 3/27/95.  
 B.M.

LEHNER ASSOCIATES, INCORPORATED  
 ENGINEERS & SURVEYORS  
 22900 WELLINGTON CRESCENT  
 CLINTON TWP., MICHIGAN 48036  
 (810) 463-4594  
 FAX (810) 463-0672



PD1549

S/O Bank  
 939 8230