



LEASE

101 E Commonwealth Ave Private Office Lofts

101 EAST COMMONWEALTH AVENUE

Fullerton, CA 92832

PRESENTED BY:

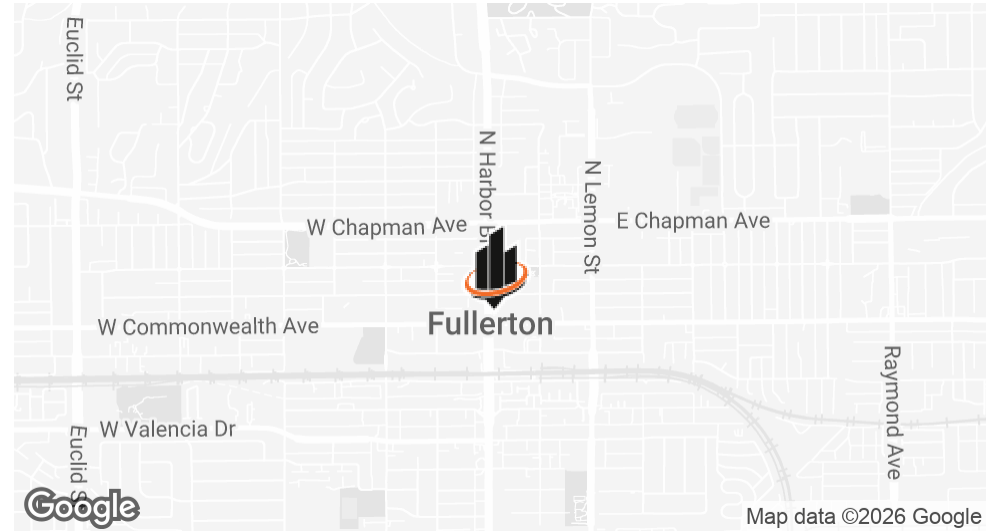
NOAH BROWN

Phone: 714.446.0600

noah.brown@svn.com

CalDRE #02259737

PROPERTY SUMMARY



PROPERTY DESCRIPTION

SVN Vanguard is pleased to present 101 E. Commonwealth Avenue, a second-floor office environment in the heart of Downtown Fullerton. Private suites ranging from 295 to 510 SF are available—ideal for small businesses, e-commerce operators, accountants, consultants, and creatives seeking a professional workspace outside of the home.

Recently renovated, the property features bright private offices, a shared conference room, kitchen, restrooms, and on-site parking, all within walking distance to Downtown Fullerton's cafés, restaurants, and shops.

OFFERING SUMMARY

LEASE RATE:	\$850.00 - \$1,100.00 per month (Gross)
NUMBER OF UNITS:	8
AVAILABLE SF:	295 - 510 SF

NOAH BROWN

O: 714.446.0600
noah.brown@svn.com
CalDRE #02259737

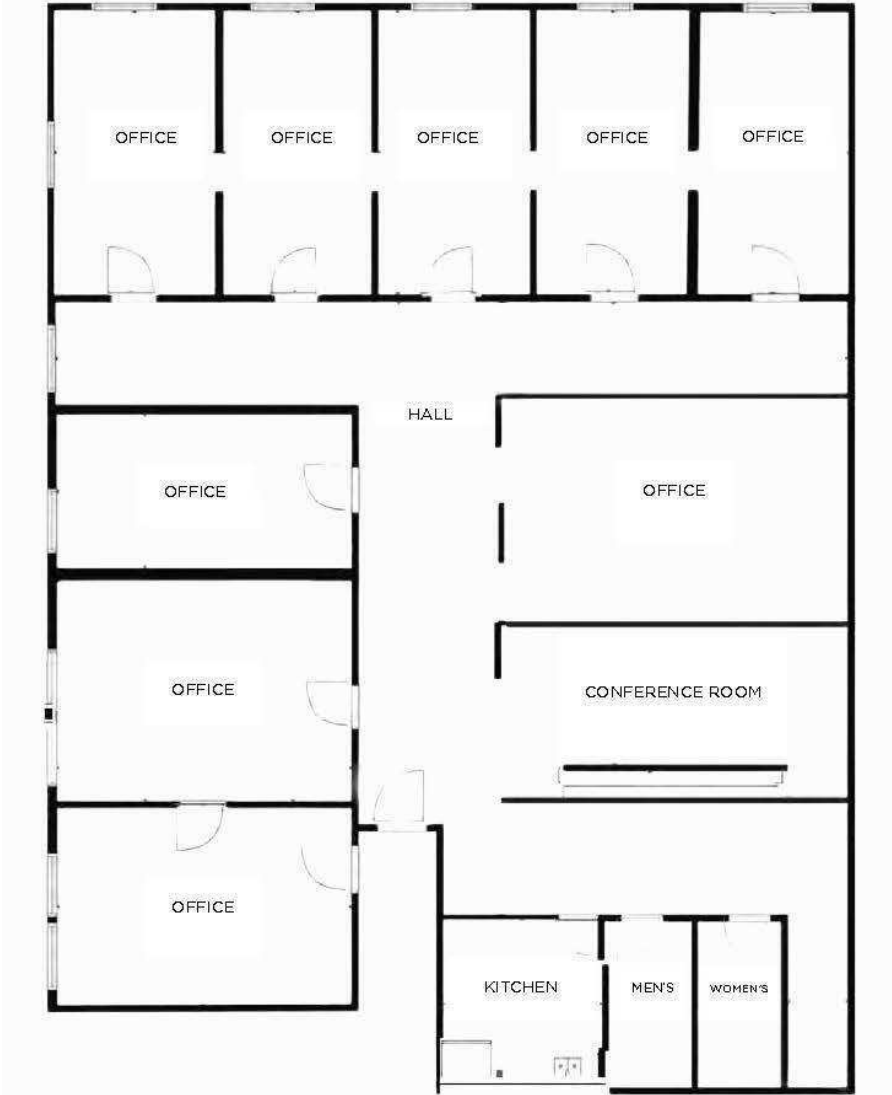
SPACES	LEASE RATE	SPACE SIZE
OFFICE B	\$1,000 per month	445 SF
OFFICE F	\$850 per month	295 SF
OFFICE G	\$850 per month	295 SF
OFFICE H	\$850 per month	300 SF
OFFICE I	\$1,100 per month	510 SF

ADDITIONAL PHOTOS



NOAH BROWN
O: 714.446.0600
noah.brown@svn.com
CalDRE #02259737

FLOOR PLAN



NOAH BROWN
O: 714.446.0600
noah.brown@svn.com
CalDRE #02259737

LOCATION MAP



NOAH BROWN
O: 714.446.0600
noah.brown@svn.com
CalDRE #02259737