

OFFICE/WAREHOUSE FOR LEASE

10139 Kaw Drive, Edwardsville, KS



- 5,000 SF office/warehouse space
- Ideal for distribution and storage
- Convenient location on 32 Highway near I-435 & I-70
- Outside storage yard
- Large drive-in door

Lease Rate: \$6,800 per month (gross)

Elliott Basler

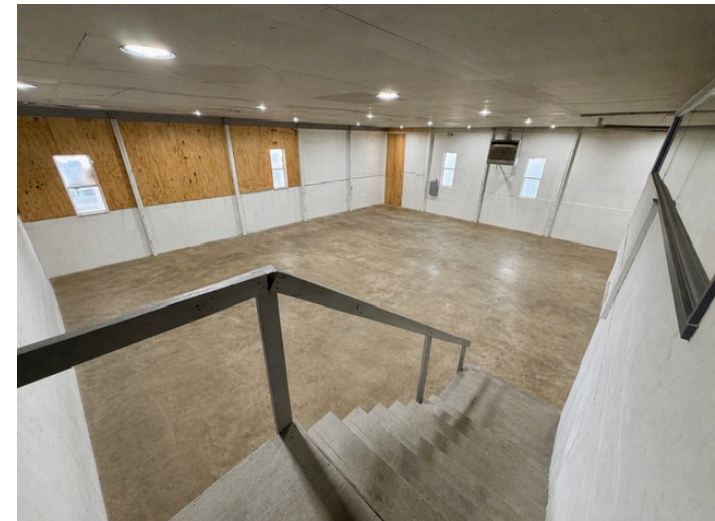
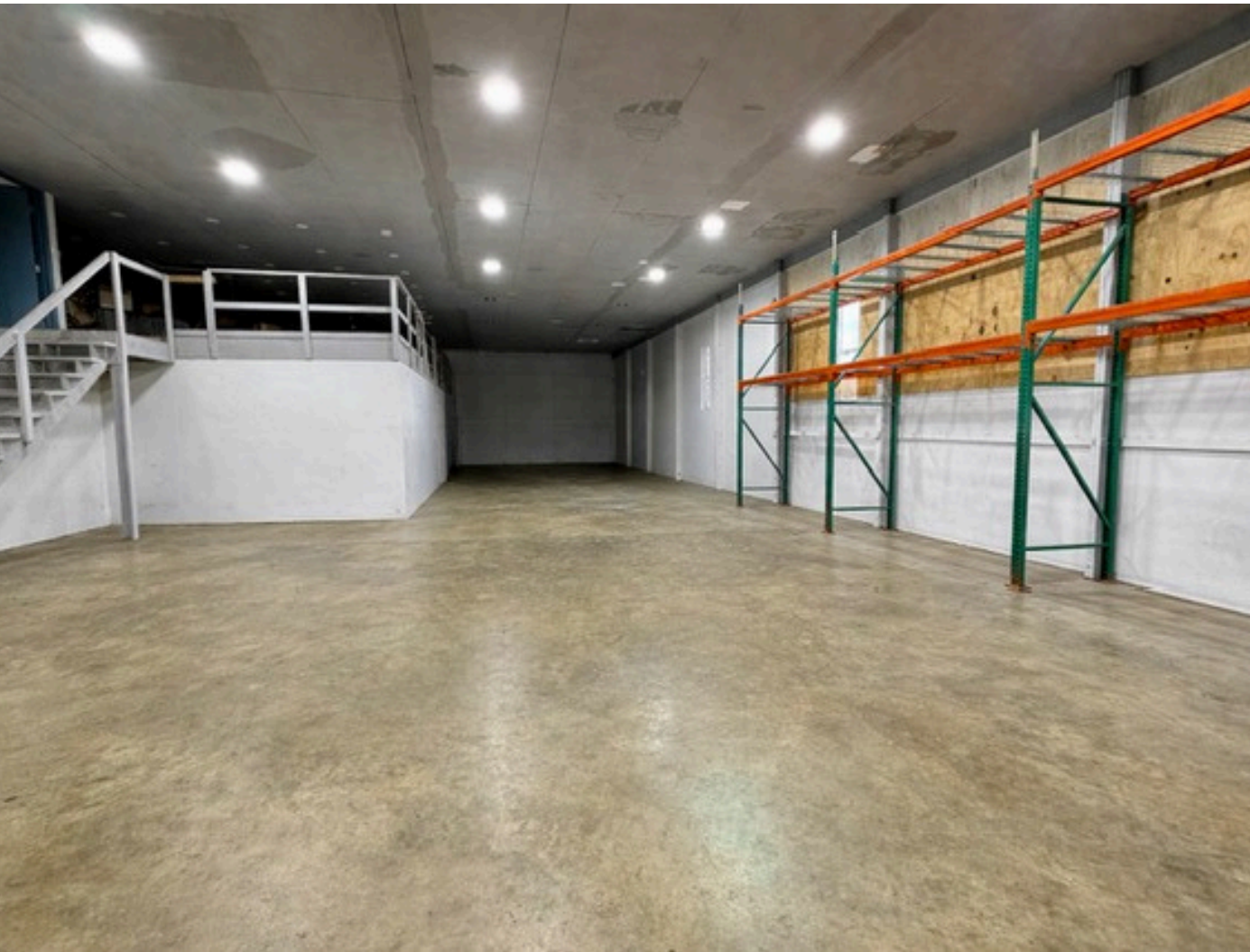
c: 913.909.6968 | o: 913.708.8146
e: elliott@fishmancommercial.com

Ryan Holcomb

c: 816.526.2904 | o: 913.747.3321
e: rholcomb@fishmancommercial.com

Disclaimer

Information furnished regarding property is from sources deemed reliable but no warranty or representation is made as to the accuracy thereof and same is submitted subject to errors, omissions, prior sale of lease or withdrawal without notice.



AREA DEMOGRAPHICS

	<i>3 mile</i>	<i>5 mile</i>	<i>10 mile</i>
Avg Household Income	\$158,961	\$134,144	\$112,146
2025 Population	19,998	66,111	369,583
Daytime Employees	8,162	29,532	167,133

Certain images contained in this brochure may have been digitally altered for illustrative purposes only. Scan QR code to view unedited photos

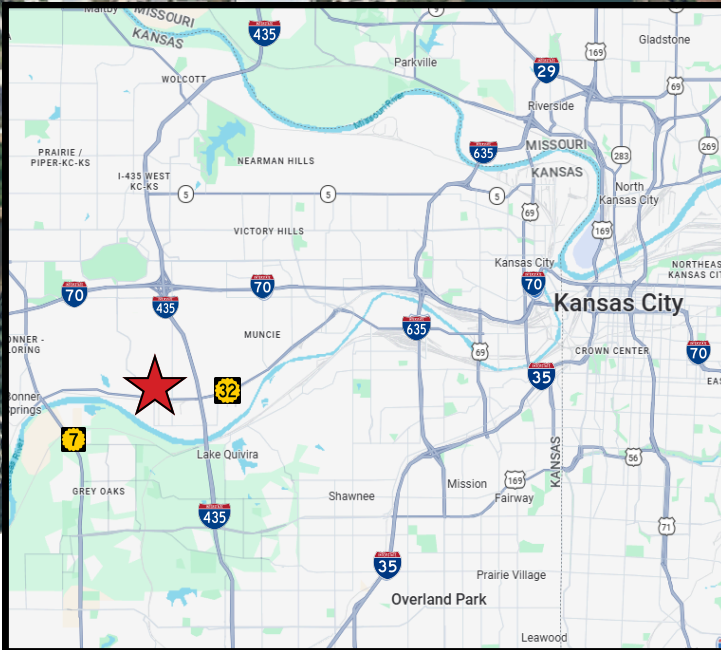


Aerial

Lake of the Forest

Bonner Springs Industrial Park

Kansas River



SPACE FOR LEASE

10139 Kaw Drive, Edwardsville, KS



LEASING CONTACTS

Elliott Basler

c: 816.909.6968 | o: 913.708.8146
e: elliott@fishmancommercial.com

Ryan Holcomb

c: 913.526.2904 | o: 913.747.3321
e: rholcomb@fishmancommercial.com

Information furnished regarding property is from sources deemed reliable but no warranty or representation is made as to the accuracy thereof and same is submitted subject to errors, omissions, prior sale of lease or withdrawal without notice.