

221 INDUSTRIAL DRIVE
HILLSDALE, MICHIGAN

INDUSTRIAL FOR SALE OR LEASE
Up to 97,486 Square Feet Available



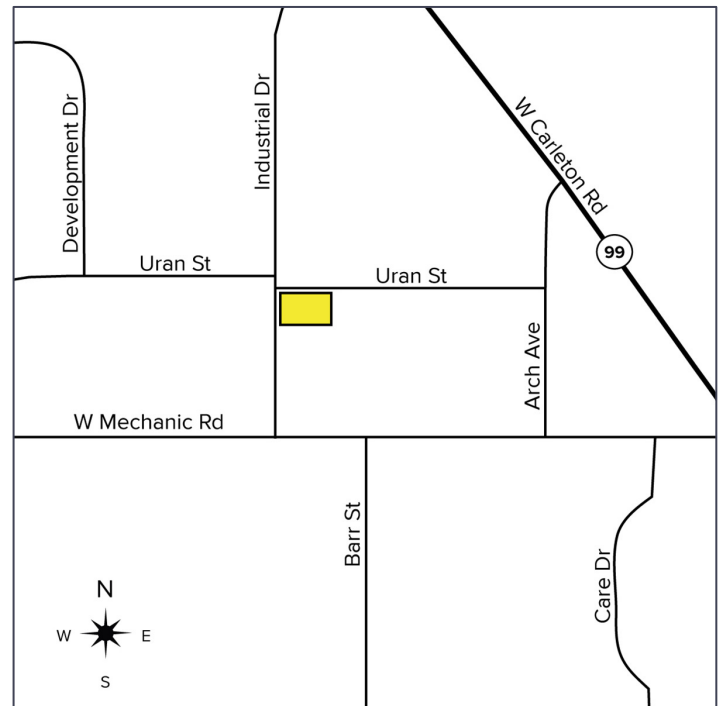
**SIGNATURE
ASSOCIATES**
KNOW SIGNATURE | KNOW RESULTS

PRIMARY POWER



PROPERTY FEATURES

- 97,486 square feet for sale
- 20,000 square feet & up for lease
- 16' clear height
- (5) truckwells, (2) 12' x 14' grade level doors
- 6000 amps, 480 volts, 3-phase primary power
- Located between Detroit, Chicago, Lansing, Grand Rapids, Toledo, and Fort Wayne
- New heat and LED lights
- Updated fire suppression system
- Compressor lines throughout
- Rail spur is available within ¼ mile via bulk trailers
- 17,000 square foot short-term tenant may remain or vacate
- Located on 5.24 acres with 250 parking spaces



For more information, please contact:

JEFF LEMANSKI
(248) 359 0641
jlemanski@signatureassociates.com

JOE PLASKEY
(248) 948 0110
jplaskey@signatureassociates.com

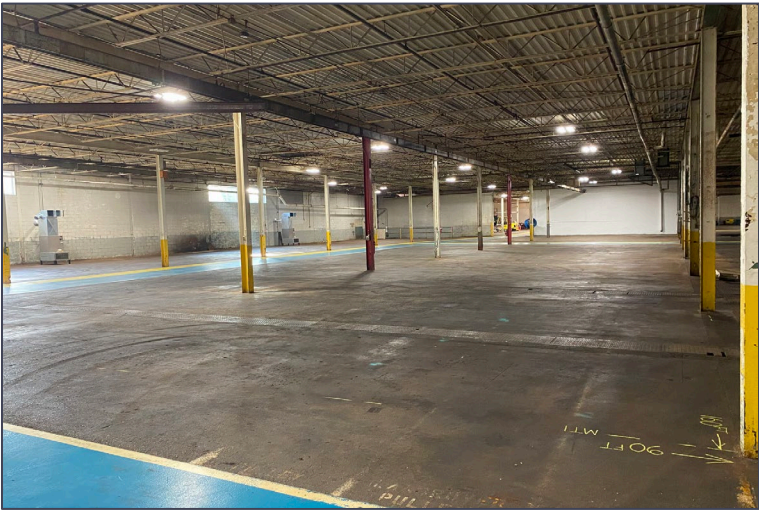
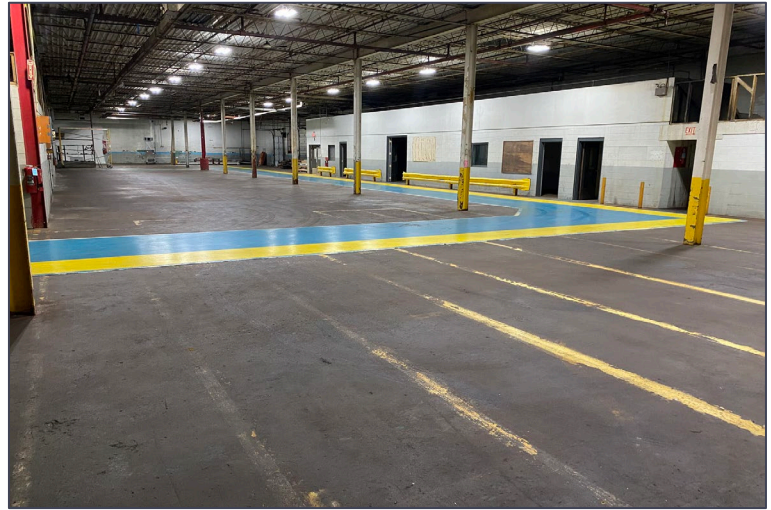
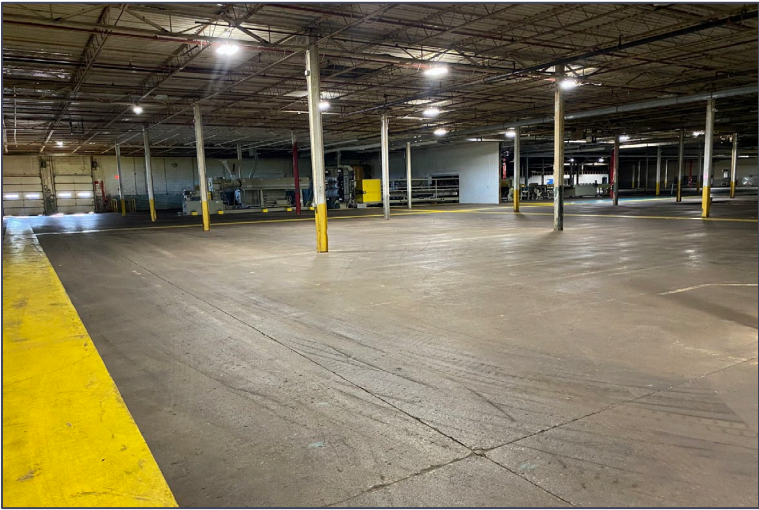
SIGNATURE ASSOCIATES
One Towne Square, Suite 1200
Southfield, MI 48076
www.signatureassociates.com

221 Industrial Drive – Hillsdale, Michigan

Industrial For Sale

Up to 97,486
Square Feet
AVAILABLE

Interior Photos



For more information, please contact:

JEFF LEMANSKI
(248) 359 0641
jlemanski@signatureassociates.com

JOE PLASKEY
(248) 948 0110
jplaskey@signatureassociates.com

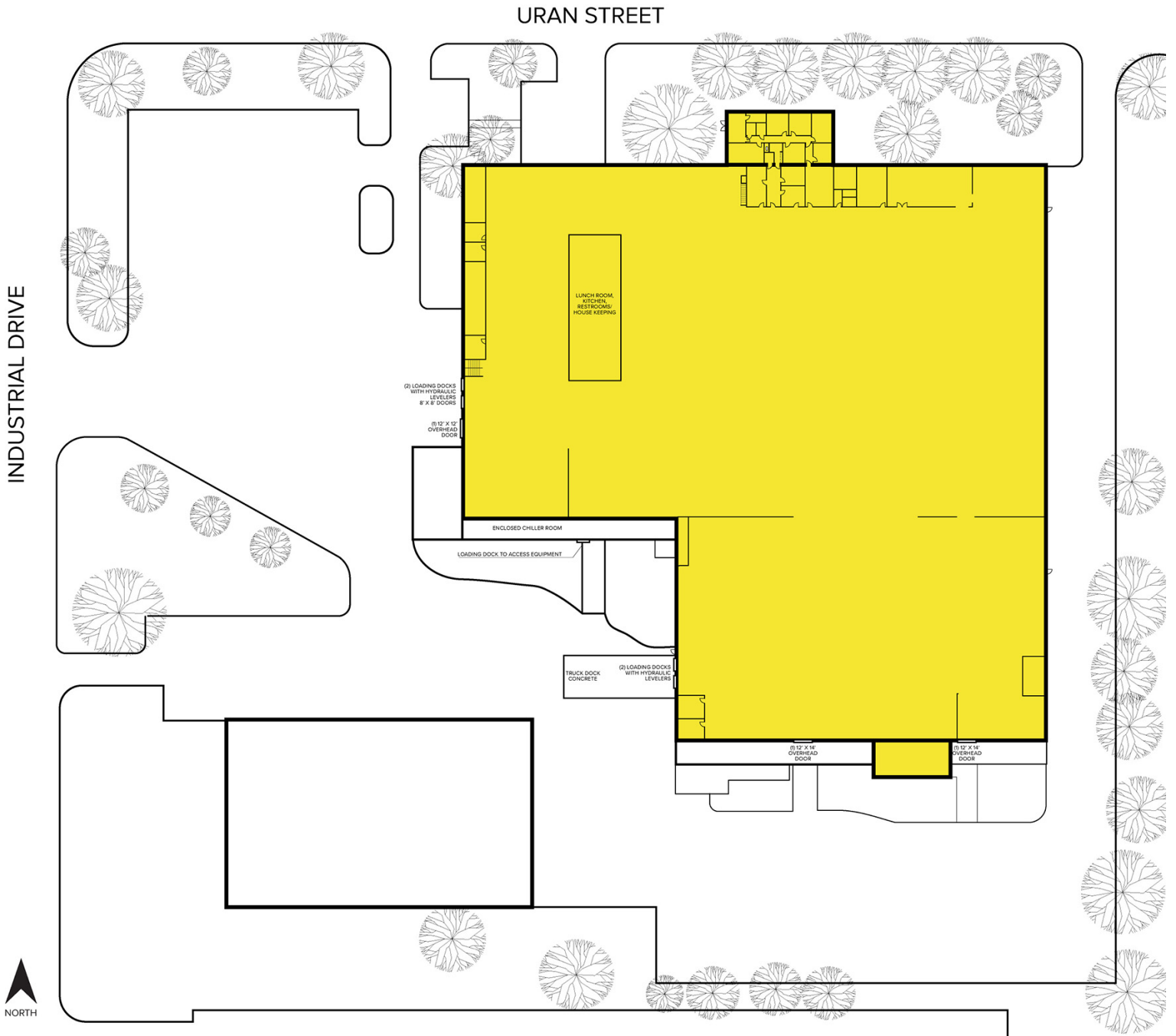
SIGNATURE ASSOCIATES
One Towne Square, Suite 1200
Southfield, MI 48076
www.signatureassociates.com

221 Industrial Drive – Hillsdale, Michigan

Industrial For Sale

Up to 97,486
Square Feet
AVAILABLE

Site Plan



For more information, please contact:

JEFF LEMANSKI

(248) 359 0641

jlemanski@signatureassociates.com

JOE PLASKEY

(248) 948 0110

jplaskey@signatureassociates.com

SIGNATURE ASSOCIATES

One Towne Square, Suite 1200

Southfield, MI 48076

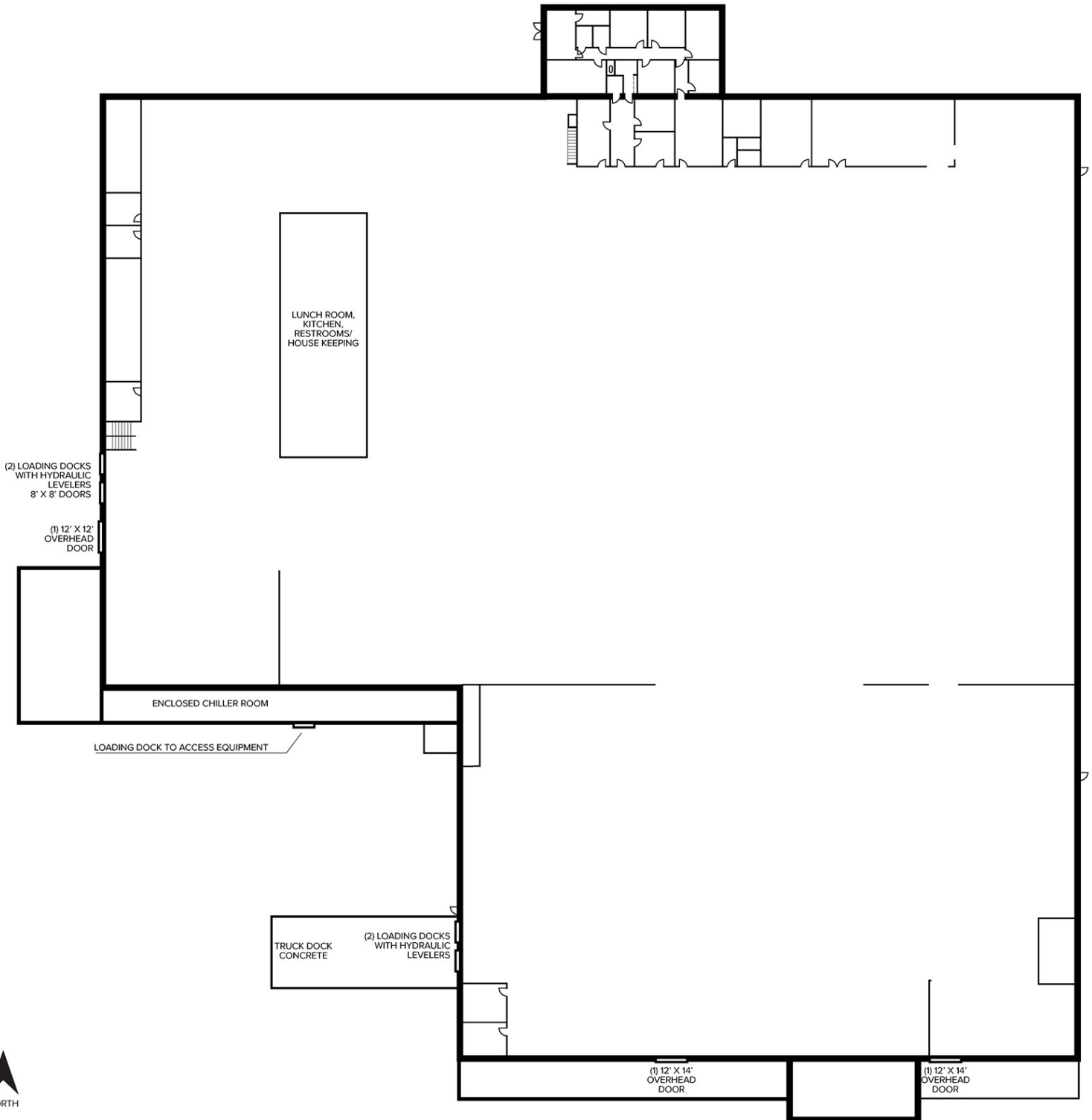
www.signatureassociates.com

221 Industrial Drive – Hillsdale, Michigan

Industrial For Sale

Up to 97,486
Square Feet
AVAILABLE

Floor Plan



For more information, please contact:

JEFF LEMANSKI
(248) 359 0641
jlemanski@signatureassociates.com

JOE PLASKEY
(248) 948 0110
jplaskey@signatureassociates.com

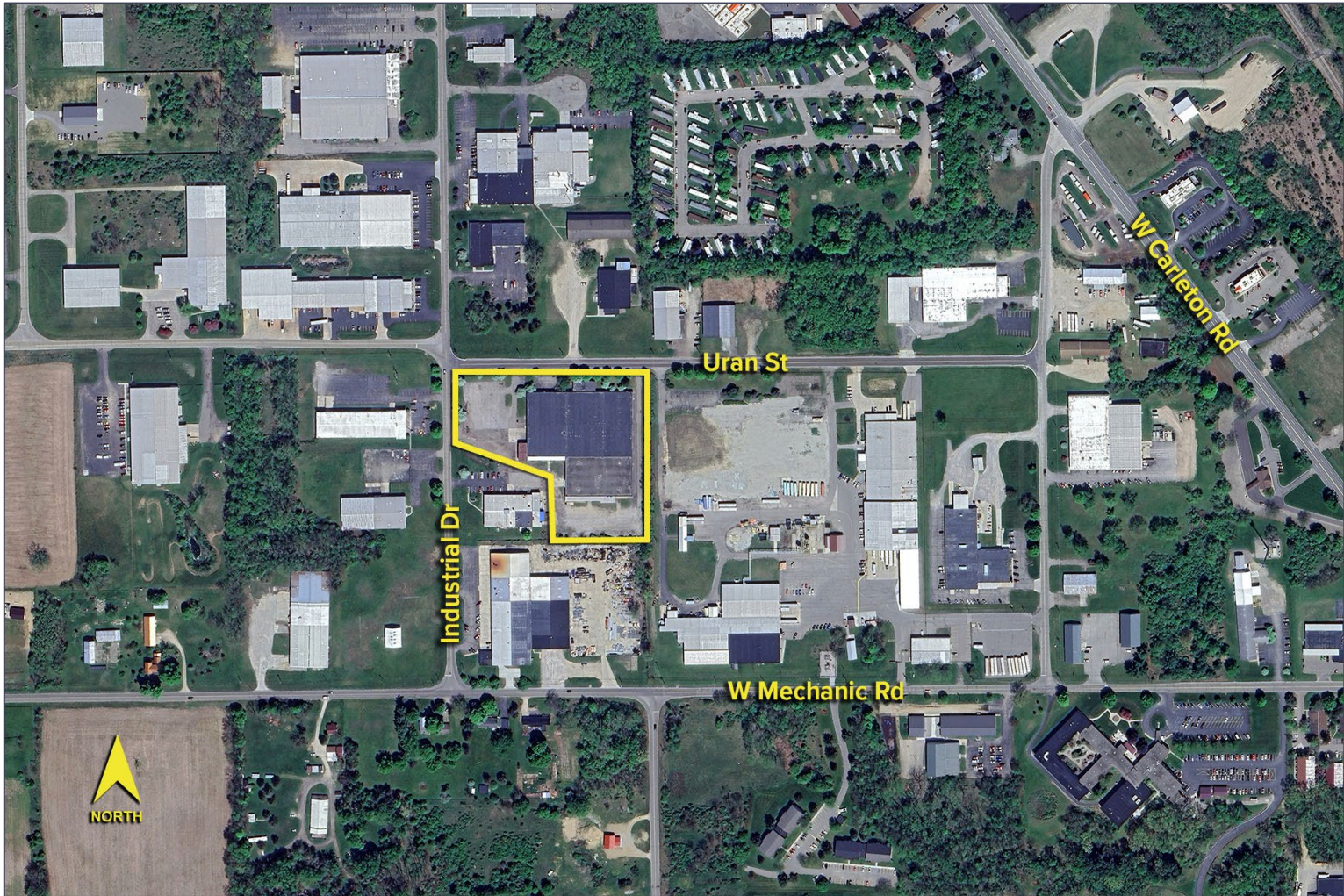
SIGNATURE ASSOCIATES
One Towne Square, Suite 1200
Southfield, MI 48076
www.signatureassociates.com

221 Industrial Drive – Hillsdale, Michigan

Industrial For Sale

Up to 97,486
Square Feet
AVAILABLE

Aerial



For more information, please contact:

JEFF LEMANSKI
(248) 359 0641
jlemanski@signatureassociates.com

JOE PLASKEY
(248) 948 0110
jplaskey@signatureassociates.com

SIGNATURE ASSOCIATES
One Towne Square, Suite 1200
Southfield, MI 48076
www.signatureassociates.com

Information is subject to verification and no liability for errors or omissions is assumed. Price is subject to change and listing withdrawal.