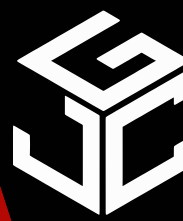


FOR LEASE

480 24th Ave NW,
Suite 110
Norman, OK 73069



Johnson

Commercial Group

JohnsonCommercialGroup.com



Offering Summary

Suite SF: 1,000 SF

Lease Rate: \$18 SF/YR

NNN Rate: \$4.50 SF/YR

Zoning: C-2

Year Built: 2010

Traffic Count: 18,451

Building Size: 85,726 SF

Property Overview

Suite 110 at Madison Square offers 1,000 SF of retail space, formerly operated as a smoothie bar and well-suited for food, beverage, or service users. The layout features an open customer area with a bar top, creating an inviting space for customer interaction and seating.

The suite includes one restroom and a rear area with existing plumbing for a kitchen setup, providing flexibility for a variety of concepts. Located in a high-traffic center in NW Norman, this space is ideal for businesses looking for a functional, ready-to-adapt location with strong visibility and accessibility.

Chris Johnson
chris@jcgok.com
405.435.3572



BRICK & BEAM
REALTY

Sally Allen
sally@jcgok.com
405.623.7920

FOR LEASE

480 24th Ave NW,
Suite 110
Norman, OK 73069



Johnson

Commercial Group

JohnsonCommercialGroup.com



Chris Johnson
chris@jcgok.com
405.435.3572



BRICK & BEAM
REALTY

Sally Allen
sally@jcgok.com
405.623.7920

FOR LEASE

480 24th Ave NW,
Suite 110
Norman, OK 73069



Johnson
Commercial Group

JohnsonCommercialGroup.com



Chris Johnson
chris@jcgok.com
405.435.3572

 **BRICK & BEAM**
REALTY

Sally Allen
sally@jcgok.com
405.623.7920

FOR LEASE

480 24th Ave NW,
Suite 110
Norman, OK 73069



Johnson
Commercial Group

JohnsonCommercialGroup.com



Chris Johnson
chris@jcgok.com
405.435.3572



BRICK & BEAM
REALTY

Sally Allen
sally@jcgok.com
405.623.7920

FOR LEASE

480 24th Ave NW,
Suite 110
Norman, OK 73069



Johnson
Commercial Group

JohnsonCommercialGroup.com



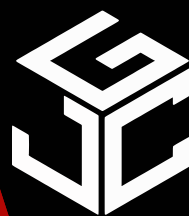
Chris Johnson
chris@jcgok.com
405.435.3572

BRICK & BEAM
REALTY

Sally Allen
sally@jcgok.com
405.623.7920

FOR LEASE

480 24th Ave NW,
Suite 110
Norman, OK 73069



Johnson

Commercial Group

JohnsonCommercialGroup.com



Chris Johnson
chris@jcgok.com
405.435.3572

 **BRICK & BEAM**
REALTY

Sally Allen
sally@jcgok.com
405.623.7920

FOR LEASE

480 24th Ave NW,
Suite 110
Norman, OK 73069



Johnson

Commercial Group

JohnsonCommercialGroup.com



Chris Johnson
chris@jcgok.com
405.435.3572



Sally Allen
sally@jcgok.com
405.623.7920

FOR LEASE

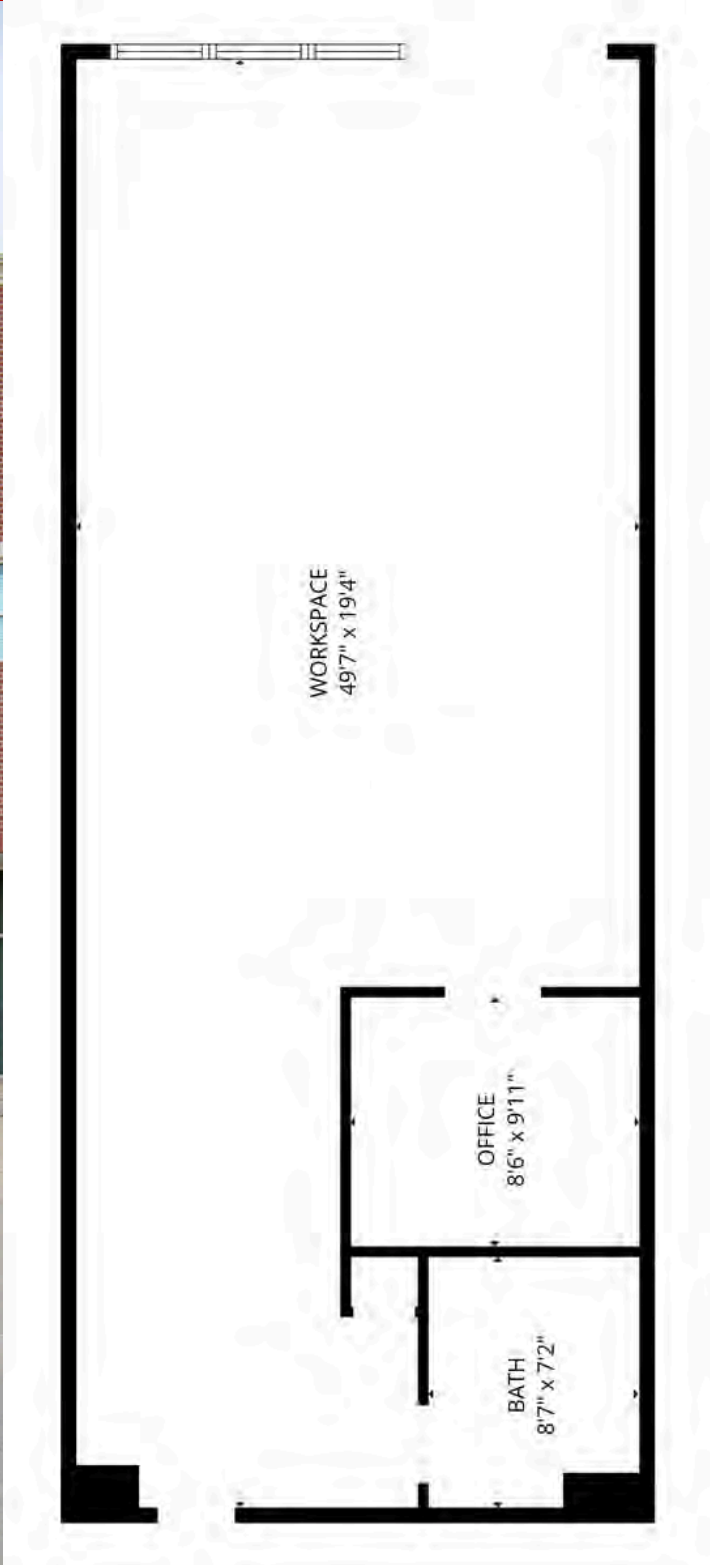
480 24th Ave NW,
Suite 110
Norman, OK 73069



Johnson

Commercial Group

JohnsonCommercialGroup.com



Chris Johnson
chris@jcgok.com
405.435.3572



BRICK & BEAM
REALTY

Sally Allen
sally@jcgok.com
405.623.7920

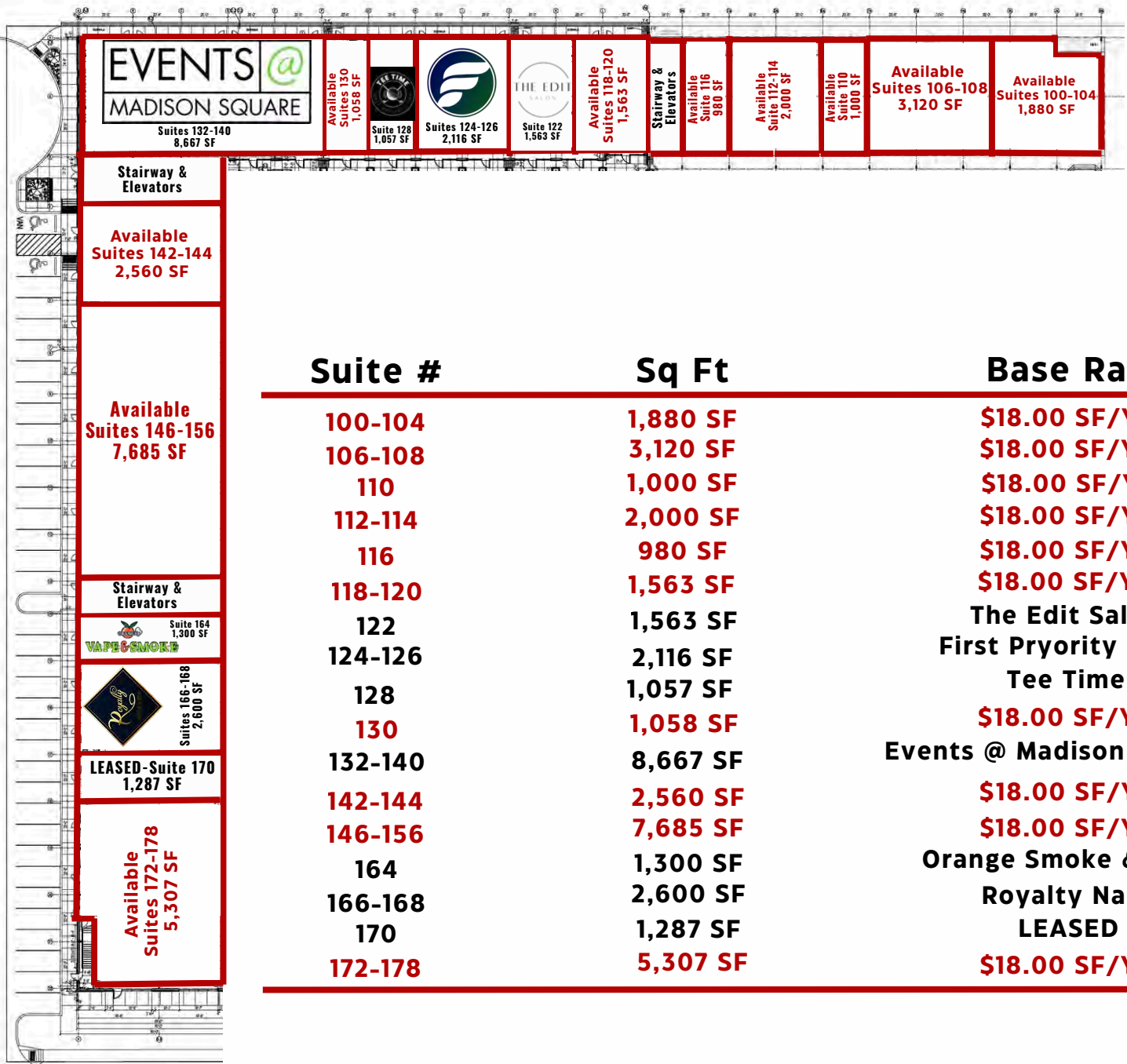
FOR LEASE

**First Floor
Suites 100-178**



Johnson
Commercial Group

JohnsonCommercialGroup.com



| Suite # | Sq Ft | Base Rate |
|---------|----------|-------------------------|
| 100-104 | 1,880 SF | \$18.00 SF/YR |
| 106-108 | 3,120 SF | \$18.00 SF/YR |
| 110 | 1,000 SF | \$18.00 SF/YR |
| 112-114 | 2,000 SF | \$18.00 SF/YR |
| 116 | 980 SF | \$18.00 SF/YR |
| 118-120 | 1,563 SF | \$18.00 SF/YR |
| 122 | 1,563 SF | The Edit Salon |
| 124-126 | 2,116 SF | First Priority Bank |
| 128 | 1,057 SF | Tee Time |
| 130 | 1,058 SF | \$18.00 SF/YR |
| 132-140 | 8,667 SF | Events @ Madison Square |
| 142-144 | 2,560 SF | \$18.00 SF/YR |
| 146-156 | 7,685 SF | \$18.00 SF/YR |
| 164 | 1,300 SF | Orange Smoke & Vape |
| 166-168 | 2,600 SF | Royalty Nails |
| 170 | 1,287 SF | LEASED |
| 172-178 | 5,307 SF | \$18.00 SF/YR |

Chris Johnson
chris@jcgok.com
405.435.3572



Sally Allen
sally@jcgok.com
405.623.7920

FOR LEASE

Second Floor
Suites 210-272



Johnson
Commercial Group

JohnsonCommercialGroup.com

Suites 210-272
39,983 SF of Available
Contiguous Space

Executive Suites
Fully Leased

Suite

Sq Ft

Base Rate

| | | |
|---------|-----------|---------------|
| 210 | 1,007 SF | \$16.00 SF/YR |
| 212 | 1,007 SF | \$16.00 SF/YR |
| 214 | 1,007 SF | \$16.00 SF/YR |
| 216 | 1,237 SF | \$16.00 SF/YR |
| 218 | 1,027 SF | \$16.00 SF/YR |
| 220 | 1,048 SF | \$16.00 SF/YR |
| 222 | 1,048 SF | \$16.00 SF/YR |
| 224 | 1,048 SF | \$16.00 SF/YR |
| 226 | 1,048 SF | \$16.00 SF/YR |
| 228 | 1,048 SF | \$16.00 SF/YR |
| 230 | 1,048 SF | \$16.00 SF/YR |
| 232-246 | 6,904 SF | \$16.00 SF/YR |
| 248-258 | 10,306 SF | \$16.00 SF/YR |
| 260-266 | 7,000 SF | \$16.00 SF/YR |
| 268-272 | 4,200 SF | \$16.00 SF/YR |

Chris Johnson
chris@jcgok.com
405.435.3572

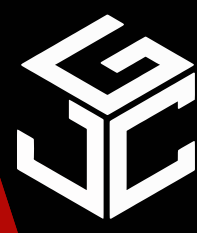


BRICK & BEAM
REALTY

Sally Allen
sally@jcgok.com
405.623.7920

FOR LEASE

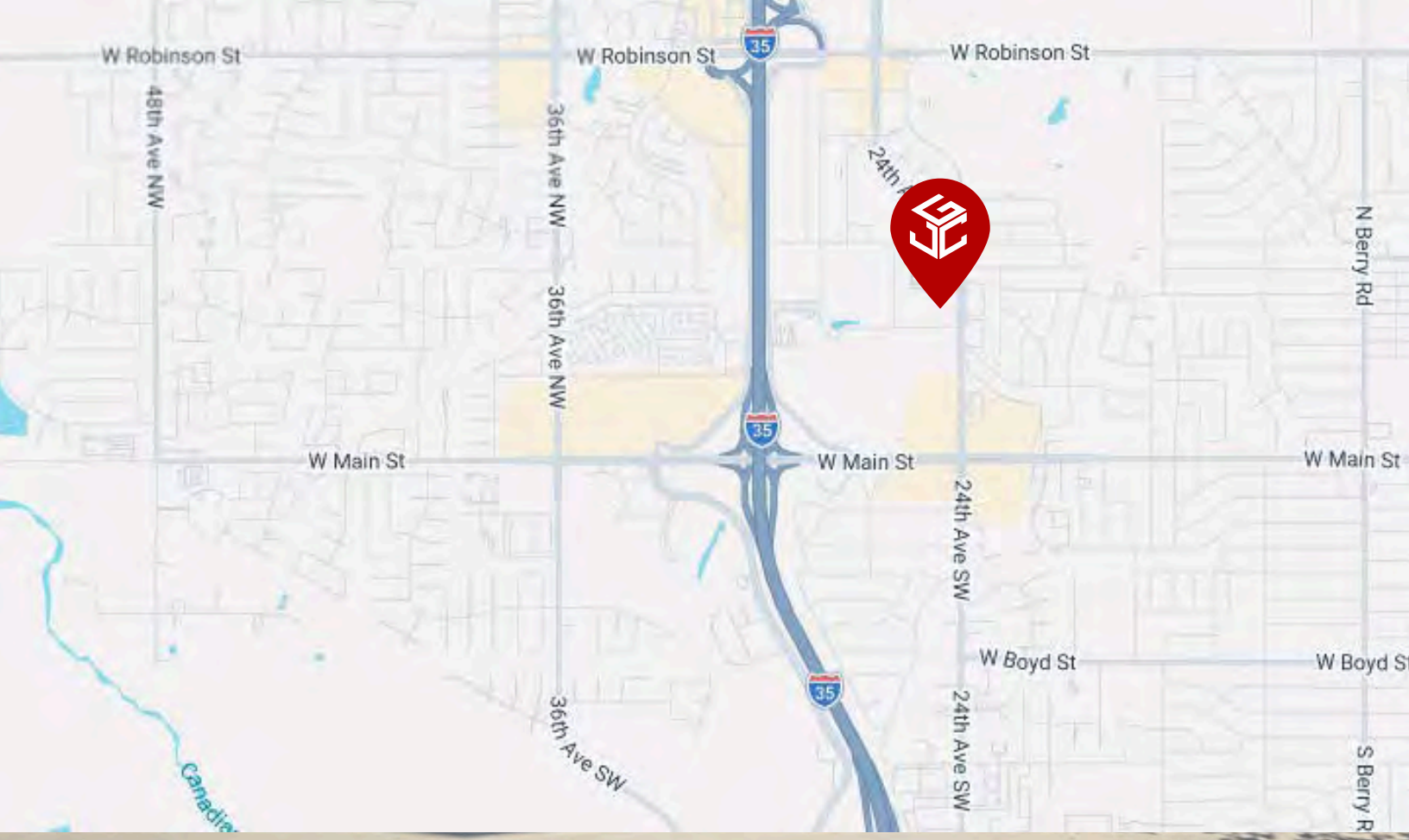
480 24th Ave NW,
Norman, OK 73069



Johnson

Commercial Group

JohnsonCommercialGroup.com



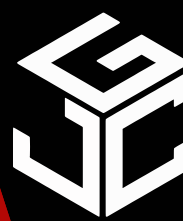
Chris Johnson
chris@jcgok.com
405.435.3572



Sally Allen
sally@jcgok.com
405.623.7920

FOR LEASE

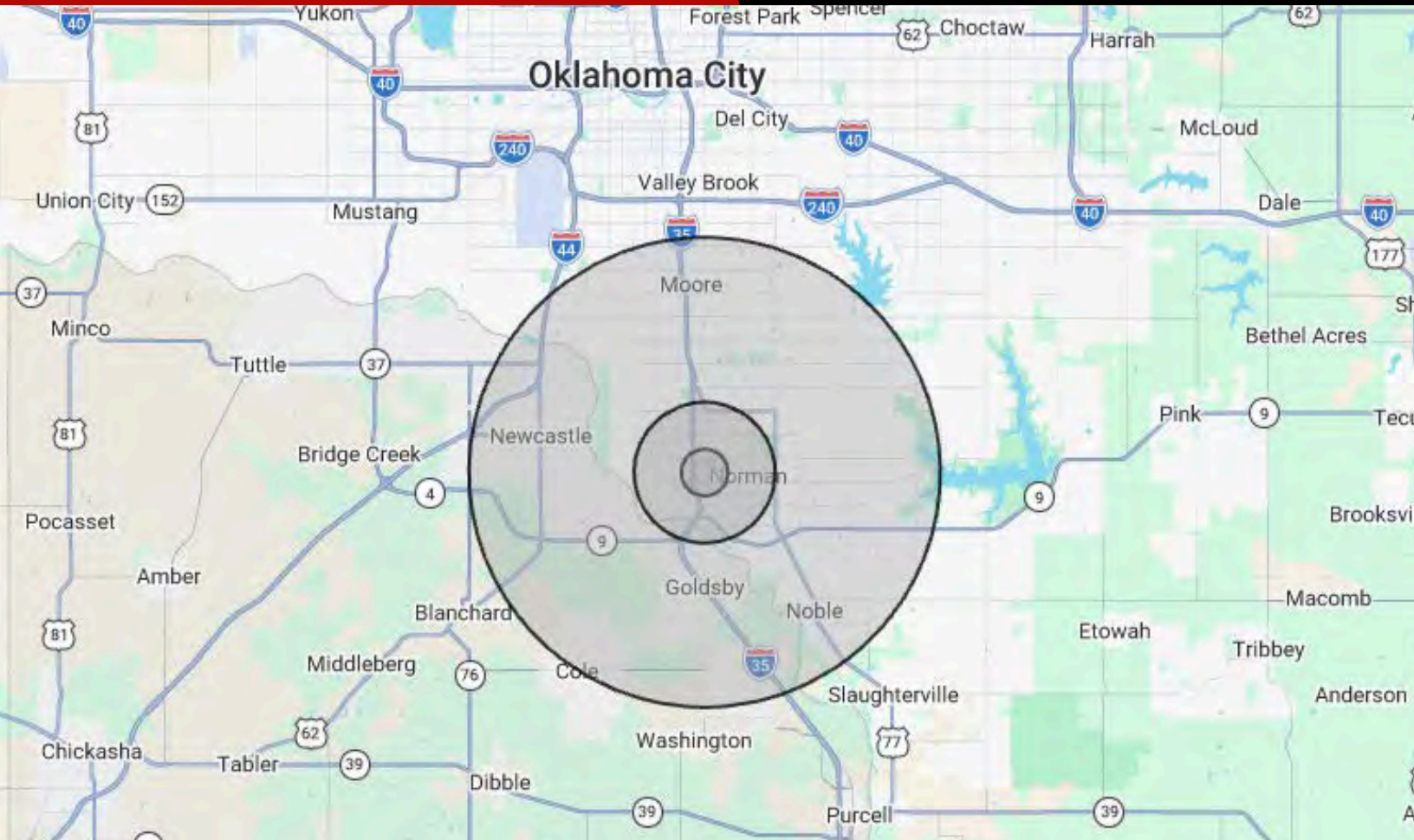
480 24th Ave NW,
Norman, OK 73069



Johnson

Commercial Group

JohnsonCommercialGroup.com



Demographics

1 MILE

3 MILE

10 MILE

| | 1 MILE | 3 MILE | 10 MILE |
|------------------------|-----------|-----------|-----------|
| Population | 7,158 | 68,829 | 250,126 |
| Average Age | 40 | 32 | 35 |
| Employment | 9,453 | 70,865 | 118,888 |
| Households | 3,196 | 26,766 | 96,363 |
| Ave. Household Income | \$72,333 | \$81,299 | \$85,537 |
| Median Household Value | \$191,041 | \$222,962 | \$199,560 |

Traffic Count

Average Daily Volume

18,451 Vehicles

Demographic data provided by CoStar

Chris Johnson
chris@jcgok.com
405.435.3572



BRICK & BEAM
REALTY

Sally Allen
sally@jcgok.com
405.623.7920

FOR LEASE

480 24th Ave NW,
Norman, OK 73069



Johnson

Commercial Group

JohnsonCommercialGroup.com



Disclaimer

A real estate broker is not authorized to give legal or tax advice. No representation is made by Johnson Commercial Group, its agents or employees, as to the legal effect or tax consequences of the information contained herein or any transaction relating thereto. Although all information furnished regarding property sales or financing options are from sources deemed to be reliable, such information has not been verified and no express representation is made on, or is in any way implied as to the accuracy thereof and is subject to errors, omissions, change of price, or other conditions prior to sale or withdrawal without notice.

Chris Johnson
chris@jcgok.com
405.435.3572



Sally Allen
sally@jcgok.com
405.623.7920