

**Asking Price:**

\$245,000

(\$232.00/SF)

CONTACT US**Shawn O'Brien, CCIM**

Senior Vice President
517 303 5554
shawn.obrien@colliers.com

**Burm Kim**

Associate
517 512 7404
burm.kim@colliers.com

Colliers Lansing

2501 Coolidge Rd, Suite 300
East Lansing, MI 48823
colliers.com/lansing



FOR SALE

345 W Grand River Ave Webberville, MI

1,056 SF Turnkey Restaurant/Café Space

Property Highlights

- Interior and exterior fully remodeled
- Updated mechanical systems, electrical, plumbing and HVAC
- Existing equipment, furniture, walk-in cooler/freezer, and restaurant fixtures included
- Full kitchen, seating ~ 40 people, including bar high-top area
- Large cement pad & side yard for outdoor seating
- Ample on-site parking; could be expanded
- Excellent visibility and quick access to I-96
- Possible developmental liquor license
- Situated on (2) parcels totaling ±0.41 acres
- 2025 Taxes: \$4,358
- 2025 Value: Taxable: \$45,869
SEV: \$58,300

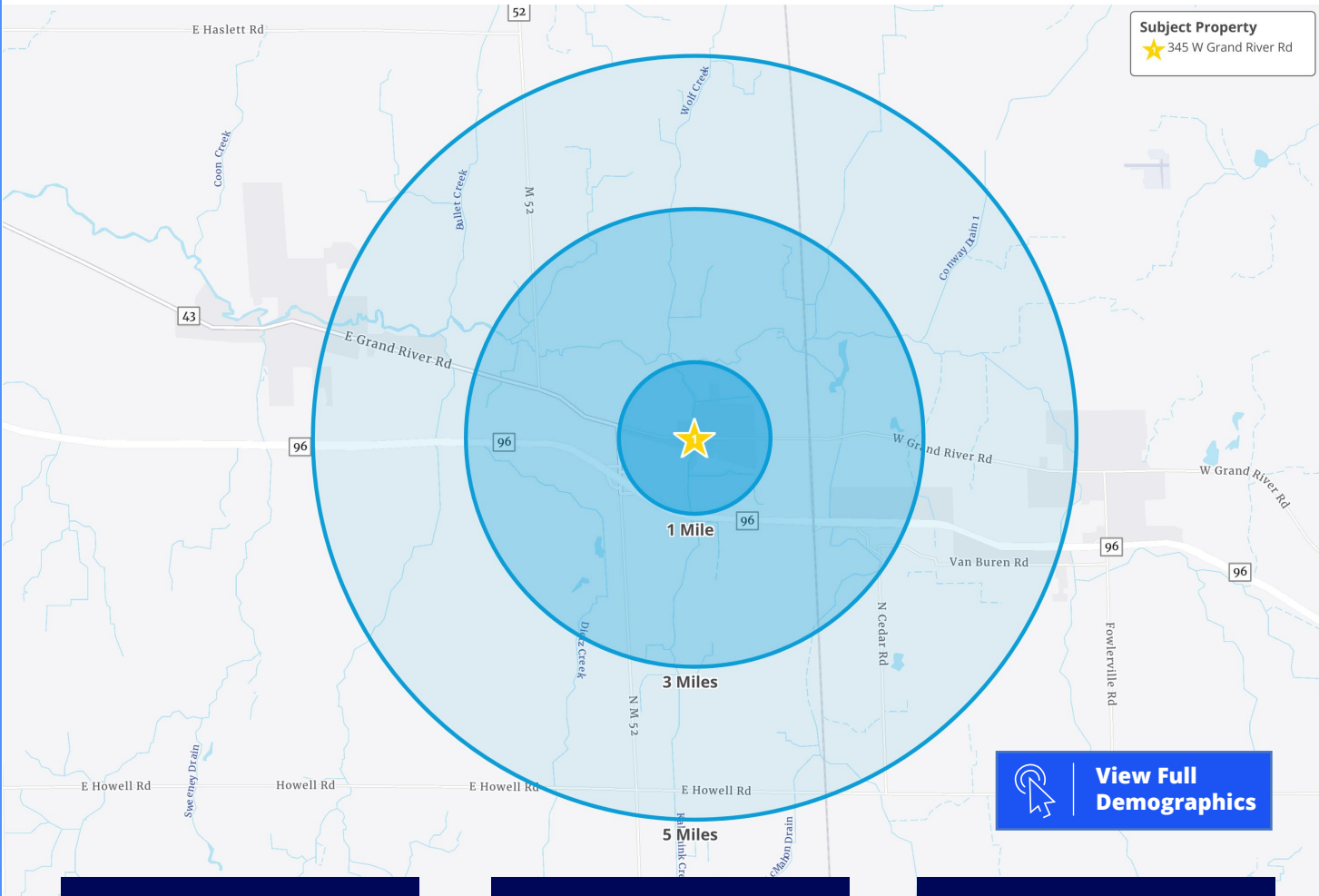
1,056 SF TURNKEY RESTAURANT/CAFÉ FOR SALE

Colliers

Exterior & Interior Photos



1,056 SF TURNKEY RESTAURANT/CAFÉ FOR SALE



[View Full Demographics](#)

One mile radius

1

Three mile radius

3

Five mile radius

5



Population

1,494



Med. HH Income

\$70,051



Businesses

61



Employees

571



Population

4,395



Med. HH Income

\$88,659



Businesses

110



Employees

840



Population

8,275



Med. HH Income

\$99,857



Businesses

206



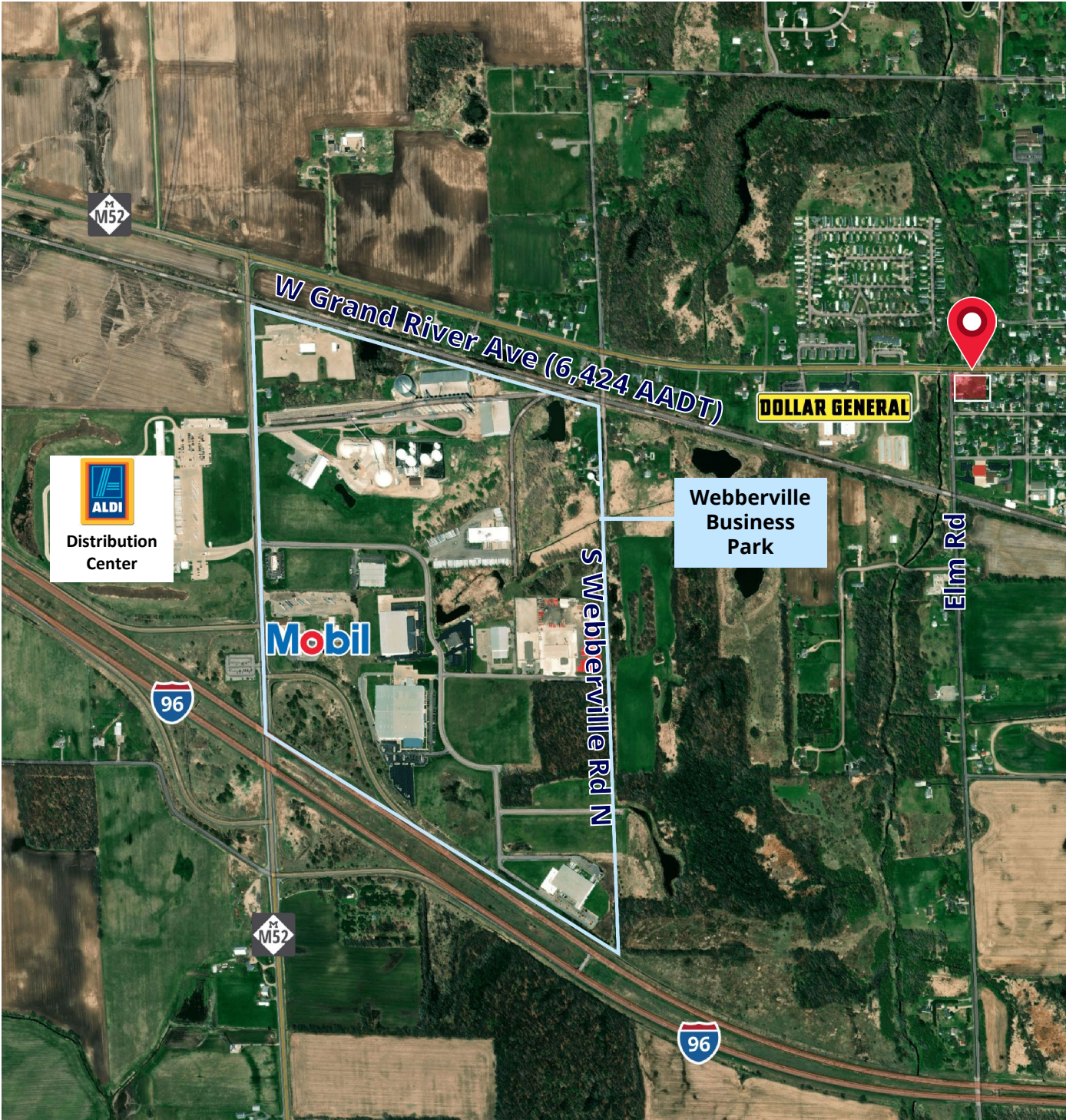
Employees

1,497

1,056 SF TURNKEY RESTAURANT/CAFÉ FOR SALE

Colliers

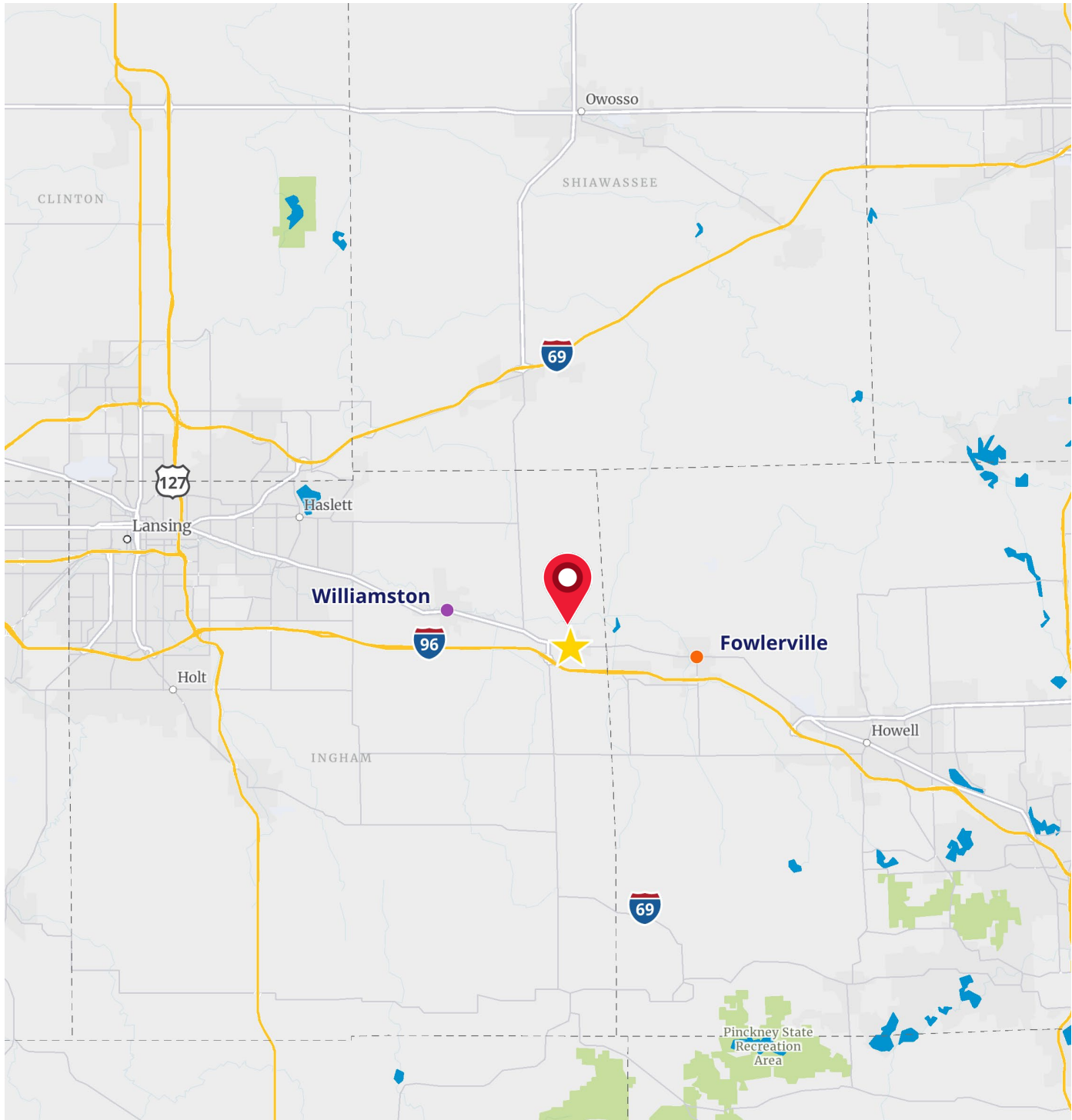
Merchant Map



1,056 SF TURNKEY RESTAURANT/CAFÉ FOR SALE

Colliers

Aerial Map



Shawn O'Brien, CCIM
Senior Vice President
517 303 5554
shawn.obrien@colliers.com



Burm Kim
Associate
517 512 7404
burm.kim@colliers

We have no reason to doubt the accuracy of information contained herein, but we cannot guarantee it. All information should be verified prior to purchase and/or lease.